



March Newsletter, 2020

Volume 39

Issue 2

Our 39th Year of Bringing Woodworkers Together

Next Meeting is 7 pm, Wednesday, March 25th, at
Our Mother of Confidence Catholic Church
3131 Governor Dr. - corner of Regents Rd.
Serra Hall (Downstairs) **HAS BEEN CANCELED**

Dinner before the Meeting

Enjoy the friendship of SDFWA woodworking members for dinner before our general meeting on **March 25th**, starting at **5:00 p.m.** in the **Round Table Pizza** restaurant (2250 Governor Dr.) just catty corner to the church where the SDFWA meets.

Fast Start Program: "Hand Tools"

by Doug Glessner

Before the General Meeting, (from **6:30 – 7:00 PM**) a guest instructor will be hosting Doug's "Fast Start" program on some topic about Hand Tools, that will be of interest to all.

Membership Report

By Bryan Blacksher

2020 Association Members: 984
2020 Shop Members: 375

If you have not yet renewed your **SDFWA membership for 2020**, Please **RENEW now**.

Reminder:

Old Tool Swap-meet on April 5th!

What's in this Issue?	Page
March Raffle Prizes	1
Fast Start Program	1
Dinner before the meeting	1
President's Message	2
Woodworking Expo	3
Toy Program Report	3
Community Outreach	3
Sponsor Chair Wanted	5
Member Shop News	5
Shop 3.0 News	6
Design in Wood	8
Extra April Meeting	9
Contact List	10
Calendar	11
Wants & Disposals	11
Our Sponsors	13
Next Meeting	16

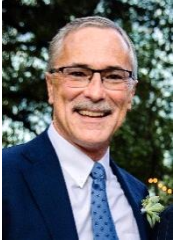


March Raffle

James Strawn,
Raffle Program Chairman

1. Lie-Nielsen Low Angle Jack
Rabbit Plane
2. Small Router Plane
3. Lie-Nielsen Honing Guide

President's Message



**Travis Good,
SDFWA President**

Woodworking is a HUGE topic with many areas of interest.

The SDFWA covers the canvas of woodworking possibilities with only a broad brush and with few colors. If we want to engage more members in more topics then we should paint using more colors and with smaller brushes. That's the idea behind our push for "Special Interest Groups" (SIGs).

Enjoy creating, exhibiting and competing in fine woodwork? For you we have **Design in Wood**. Enjoy working in and helping to run a community woodshop? For you we have the **Member Shop**. We represent other interests but there are many more to get excited about.

At our **CANCELED** March General Meeting you'd hear from people who have specific woodworking passions. You'll see their work and have the opportunity to express interest in learning more through joining a SIG. Among the topics already on the agenda are:

Inlays and Marquetry: decorative work of inlaid woods of colors and grain

Digital Design: design software to plan and execute your projects

Turning: greatly satisfying soup-to-nuts projects in very little time

Epoxy Resin: using epoxy with pigments and other additives in projects

Lasers: using light to etch, score and cut wood

Scrolling: precision cutting with intricate detail

Caning: applying rattan cane to a furniture and art

Live Edge: projects incorporating the live bark edge of wood

Hand Tools: no power, no computers just you, the tool and wood

CNC Milling: computer controlled routing driven by digital designs

Of course the tried-and-true will be there too. **Carvers, Toy Making, Luthiers, Digital Tools and Holiday Gift Builders** will show their colors and enlist new members. Our goals are to start new SIGS, grow existing SIGs, and paint a picture of SDFWA woodworking with many more colors and much more detail.

Didn't see your passion pursuit listed above? You'd love to get a community interest group started? It's not too late, write me with your ideas and let's get it in!

SIG Calendar: (Meet in the Member Shop)

Tuesday Toy Making: March 17 @ 9:00 AM

Carvers: March 17 @ 6:30 PM

Holiday Gift Build: March 20 @ 6:30 PM

Luthiers: March 27 @ 7:00 PM

Club New Member Social: March 28 @ 8:00 AM

Club Eye Opener: March 28 @ 9:00 AM

Digital Tools: March 28 @ 10:00 AM

March Contest!



"Kitchen Utensils"

The contest will be judged at our March General Meeting. Bring your entries to the meeting early to get it photographed. The winner gets \$100 Cash, but everyone entered gets a thank you "goodie bag". All entries are then donated to Member Shop's Holiday Gift Sale. *** **CANCELED** ***

Brace Yourself for the Plane Truth

www.bonitahistoricalsociety.org/exhibitions.html

An exhibition in South Bay highlighting the recent work of woodworkers in San Diego. Traditional handmade reproduction furniture from the 18th and 19th Century as well as contemporary sculpture in wood will be on display during the month of March.



The exhibition includes antique planes, tools and hand drills from the museum collection.



Exhibition dates: March 13 - April 3, 2020

At the Bonita Museum
4355 Bonita Rd. Bonita CA. 91902
(619) 267-5141 : Wed. – Sat. 10am - 4pm

Toy Program Report

Roger Solheid - Toy Program Chairman

We have not completed any toys since our last report. Our toy group is in production of two **new** toys: butterflies and tool totes (with wooden tools).

Community Outreach Report

By Mike McElhiney - Outreach Coordinator



Kitten season is nearly upon us and the San Diego Humane Society is gearing up. Litters run, on average, three to five kittens and each litter, almost always without a female cat who would nurse them, needs constant supervision. To tame this herd of cats, the Humane Society acquired 24 cages to house the kittens as they arrive and are subsequently farmed out to a small army of Foster Parents who take the kittens to their homes for a few weeks. Once they reach a desired weight of about 30 ounces, they return to the Humane Society where they are adopted and find "Forever" homes.

Kittens without a mother, and with the further stress of being in a new home, can have behavior issues that need to be addressed. One of the more common problems is that one kitten tries to suckle on a brother or sister and can injure them. This is where SDFWA Outreach steps in and helps.

Kitten cages at the Humane Society are essentially boxes with a wire mesh door which allows good visibility and ease of access. Each box measures approximately 30" x 30" for height and width and 24" deep.



They come in blocks of four, are on wheels and are made primarily from white $\frac{3}{4}$ " melamine. There are shelves for a mother cat to rest about halfway up. This is where Outreach enters the picture.

When there is no mother cat to care for them, kittens may need to be separated. A partition made of melamine that slides in, rests on the shelf and has a drop down leg to support the other side. 24 partitions were made with hinged support legs. They work well.



One more challenge at the Humane Society. Outreach has been asked to provide two rolling carts that would store all twenty-four partitions. To contact Mike McElhiney and offer help, go to sdfwa.org, click on 'About', and look under Officers and Committees. Hope to hear from you soon.

But wait! There are more projects that need help. Outreach is sprucing up the lobby of the Western Division of the San Diego Police headquarters down by Gaines Street and Friar's Road. If you are good at CNC, help Outreach out. We need some emblems made and some other artwork as well. As well as more mundane things like building picture frames and hanging the project on a wall.

Outreach is currently working with Engine station 8 in Hillcrest to make a table for their station. We have acquired some Torrey pine and are making a "river runs through it" table for them.

Outreach has also been contacted by the director of the Oceanside CHP office who would like us to do a table for them. Rather than a river runs through it table, why not a highway runs through it table? I like that idea.

Another project is with the San Diego Woodturners. *General Tom*, the go to person for TAV (Turn Around for Vets), would like some small pieces of furniture made from Torrey pine. Yes, Outreach has Torrey pine and we have access to quite a bit of milled material.

I hate to stop here. I know there is more to do for our community. If you have any ideas or see some needs, please let me know.

And a final request for help on any or all of these projects.

Thanks,
Mike

Member Shop



**Gary Anderson,
Member Shop Chairman**

619-670-1181

Pinz711@aol.com

I want you to know that it's really hard to write these articles.

"Why, you ask? Well, several reasons.

1. There are so many things going on at your Member Shop that I can't fit it all in. I could tell you about the exponential growth we're experiencing. (Over 60 new Members have joined since Jan 1st!) We've actually had to set a limit on the number of new Members we can accept per month! Or I could list all of the Educational programs we're offering such as the Cutting Board Class, the Tambor Door Seminar, the Veneering Class, the CNC, Laser, 3D Printer or Sketch-Up Classes....or the Turning Classes (Spindle or Bowl). But there's just not enough room to list them all!

2. I'm not sure what you'd like to hear most. Are you interested in a particular facet of woodworking? If so, I could get into all of the Special Interest Groups you could be a part of. But you're going to hear all about that at the General Meeting. And that's a program you don't want to miss! We already have over 12 different specialties you'll hear about and be able to "explore" in detail. And they're all FREE!

3. I could get into all the "secret stuff" we're working on! But then I'd have to get you to promise to keep it all secret. For example, Pete Sterling is hard at work in his Laboratory where he and his fellow conspirators, Elizabeth Gralton and Eric Knowles are cooking up a plan for Shop 3.0. I can't tell you much, but I CAN tell you it's going to be BIG! Shhh!

What I'd really like to write about is all the volunteer opportunities we have available. But those are already listed, in menu form, on the sdfwa.org web site, under the "Member Shop" tab. If you've always thought it would be fun to get involved, you're right! Check it out.

So... you see the challenges I face. It's just too tough trying to write this article! I guess I'll just sit this month out and give it another try in the next newsletter. Talk to you then...

"Help Wanted!" Sponsor Chairman



How about giving us a hand by getting involved in the operation of this great Association?

We need a new "Sponsor Chairman" (or Chairwoman!)

This individual is responsible for finding, retaining and developing sponsors (businesses that share an interest in having a "partnership" arrangement with SDFWA) to provide SDFWA Members with discounts and or other support. The ideal candidate will be someone who enjoys visiting local businesses such as Rockler, TH&H, etc. to discuss the discount program, arrange for the display of SDFWA brochures, and maintaining an excellent relationship between the business and SDFWA.

Taking on this challenge will not only be fun and interesting, but you'll meet a lot of people and have the opportunity to help us grow the value of a SDFWA Membership!

Interested?

Contact Travis or Gary for more information.

The Future of the SDFWA Member Shop

What is Shop 3.0 and Why Do We Need It?

By Pete Sterling, Shop Planning Director – v2

As many of you know, our Member Shop has been a huge success right from the beginning when we opened in June 2017. Our success is clearly seen in our financial health, physical & functional expansion, community creation & growth, members' positive feedback, and growing membership. Our shop membership at startup was 157, and it now stands at over 350 and it continues to increase. This success has created an exciting opportunity for all SDFWA members to reap the benefits of our success, including growth of both the SDFWA and shop memberships which assures continuing financial strength, greater diversity and a younger demographic of the membership which brings in fresh eyes and new energy, and many new educational resources to take advantage of.

But when you think about the future (which is now my job), our success also presents challenges to the Association which need to be addressed now. Our new 3-year lease will lapse on 1 March 2023, which is almost exactly 36 months from now. Discussions with the property owners indicate that we will probably not have the opportunity to renew our lease again.

Therefore, given our growth, and the necessity to find new space, we have started a process we call **Shop 3.0**. ***Its purpose is to find the best solution for follow-on space for the shop to meet its on-going and expanding missions.*** We know that our growth is already starting to place stress on our equipment, and unless we manage that growth over the next 3 years, we will exceed the capacity of the shop, resulting in waiting times to reserve member slots. We do not want that to happen.

Our Shop Director, Dallas Keck, is finding ways to partially address this issue in creative ways to accommodate more members. However, we are finding that we must manage growth of membership in the interim 3 years in order to continue to provide the most positive experience possible for all members.

Shop 3.0 presents us with many options to evaluate, all of which take time, money and effort to implement. These include:

1. Stay where we are and not expand
2. Stay where we are and expand into another bay
3. Stay where we are and open a "satellite" location
4. Finding a larger space and leasing it
5. Occupy some government building on a grant or "Program" arrangement
6. Purchase Land and Build our Own Building (includes possible purchase of an existing building and/or land)

Options 1, 2, and 3 on the surface seem tempting. However, as stated before, we do not believe that we will be offered a new lease, so relying on any of these options is risky and would not give us enough time to react if the Landlord turns us down for a new lease. In addition, no contiguous space exists for us to grow into. A satellite location is always a contingency in the event we do not succeed with other options, but it places great stress on the volunteer count, introduces more expense with 2

leases and more tools & equipment, challenges our software to manage 2 locations, and complicates overall logistics and management of 2 shops. However, we will continue to examine option 3 as a fallback situation.

Option 4 seems like the natural extension of what we have been doing, however, when you look at the costs associated with a larger space (rent, fees, utilities, etc.) our current business model does not support that level of expense per month. We rely on memberships, courses, special projects, sales, and donations for our revenue. At our current expense levels (and factoring in the rent increases for the next 3 years), we can adjust and accommodate those expenses. If we leased another significantly larger space, the projected market lease & fees rates for that space would be tremendously high, and we would simply not be able to afford them. There are finite limits to how many members we can have (i.e. revenue), how many classes we can teach (revenue), and how many projects and sales we can support.

Option 5 could be viable, but it will take a huge effort to penetrate the various levels of government to find what we want. It is doable, but unlikely. Expertise is needed to examine this further in enough detail.

Option 6 seems at first glance daunting due to the jump from leasing to owning a building, but it is doable with the right team working on it. Fund raising will be required and at a much higher level than we did before, and finding land is not easy but it is possible. I have been working on this option for some time, and assuming we can get funding, it is achievable within 3 years. If we can do this, we could ideally open our doors with our own larger, more capable facility with zero debt and reduced monthly operating expenses. That is a very strong motivator to pursue this option.

As you can see, the Association faces big challenges in order to continue the success of the Member Shop. We have begun to analyze and define each of these options and have not completely ruled out any at this point. I will continue to provide progress reports and schedules to the Association as we move forward toward the best solution, both financially and logistically. In order to be successful, here are the skills I need on the team now:

- a. A fund-raising person who is familiar with wealthy donors and foundations in the non-profit world***
- b. An experienced grant writer or former City/County facilities management employee to pursue governmental money and excess property opportunities***
- c. An experienced commercial real estate broker to guide us with land/building acquisition***
- d. An experienced commercial general contractor (not residential) who has built commercial buildings (preferably pre-engineered steel) in San Diego or nearby***

This is the first of a series of newsletter articles I will write to keep the membership informed about the future plans for Shop 3.0. Constructive, thoughtful comments are always welcome and can be addressed to me via email.

If you are truly interested in joining this team, and meet one of the qualification areas above, please contact Pete Sterling by email (and also include a phone number, please) at: psterli1@san.rr.com. I welcome your help!

CALLING ALL WOODWORKERS!
THE 2020 DESIGN IN WOOD EXHIBITION
IS OPEN FOR ENTRIES - DEADLINE IS MAY 1ST

We have over \$20,000 in award money and merchandise with 26 entry classes. Each class awards 1st through 4th place plus Honorable Mentions. In addition, there are many Donated Awards from our sponsors and 3 “Special” awards from the fair. Also, there are six awards reserved for SDFWA members. So, get working on your winning entry. Your work will be on display to over 1.5 million fairgoers that visit our exhibit each year. We are proud to announce that we came in third as the “Favorite Thing” about the fair in exit polls last year. Food and Midway rides were 1 & 2.

This year’s theme is “**HEROES UNITE!**”. I’m looking forward to seeing the theme entries. The fair runs from June 5th to July 5th. Fine Woodworking magazine is the sponsor of the “Best in Show” again this year. Enter online at www.sdfair.com/exhibits/design-in-wood. The fair website has the entry brochure which lists all the classes and all the awards as well as all the industry donors and prize money. There is even more information on our SDFWA website <http://www.sdfwa.org/design-in-wood-2020/>.

Important Dates:

Entry deadline:	Friday, May 1, 2020.
Entry delivery date:	Tuesday, May 26, 2020.
Awards ceremony:	Thursday, June 4, 2020, 7:00-9:00pm.
Exhibit dates:	June 5 - July 5, 2020. Closed Mondays
Entry pick-up date:	Tuesday, July 7, 2020.

Volunteers from our membership are needed to walk the floor and work in the chair shop.

NO experience is necessary to volunteer, and volunteering is very rewarding.

Go to <http://www.sdfwa.org/volunteer-duties/> for detailed information, schedule & signup instructions.
Also, Doug Murphy will be at the meeting with signup schedules.

Help is needed with set up starting Monday, May 18th at the fairgrounds Mission Tower building. Enter the Solana gate and park near the building. Bring a screw gun if you have one. There is a lot to do. We have Marines to do the heavy lifting. In addition to free fair tickets, enjoy coffee, juice and donuts in the morning, a great lunch and refreshments throughout the day. Come in and find any of our staff (those are the ones with employee badges) and they will get you signed up and put you to work. If you have problems, find me and I will find something for you to do.

Once the fair opens, we need members to “walk the floor” to help educate the public and protect the exhibits. A floor shift is three hours. You receive two tickets for each shift or four tickets for each closing (last shift in the evening). In addition, we need members to work in the chair shop, building children's chairs for charity. A chair shift is two hours. You receive two tickets for each shift.

Fair tickets will be given to those who volunteer: Volunteer for several shifts and you can receive enough tickets for your family and friends. Up to 4 tickets will be given to those who help with setup (exact number depends on amount of time helping). Two tickets will be given for each floor-walking shift or chair-shop shift. **Remember, sign up for a shift and get two (2) free tickets to the Fair. Sign up for several shifts and get enough tickets for your family and friends also. Sign up for the closing floor-walking shifts and DOUBLE YOUR TICKETS TO FOUR (4) TICKETS for each closing shift.**

AGAIN, THIS YEAR! SHOP MEMBERS THAT SIGN UP TO WALK THE FLOOR ON THE AFTERNOON OR EVENING SHIFT WILL GET A FREE “SHOP SLOT” FOR EACH SHIFT. SIGN UP ONLINE AT <http://www.sdfwa.org/volunteer-schedule-design-in-wood-2020/>

For those who help with set up on May 18, we have free tickets based on how much time you work, along with the refreshments and a great lunch. Come and help with the setup and see how DIW is put together.

Sign up to volunteer on line at <http://www.sdfwa.org/volunteer-schedule-design-in-wood-2020/> or at the general meetings, starting with this month's general meeting.

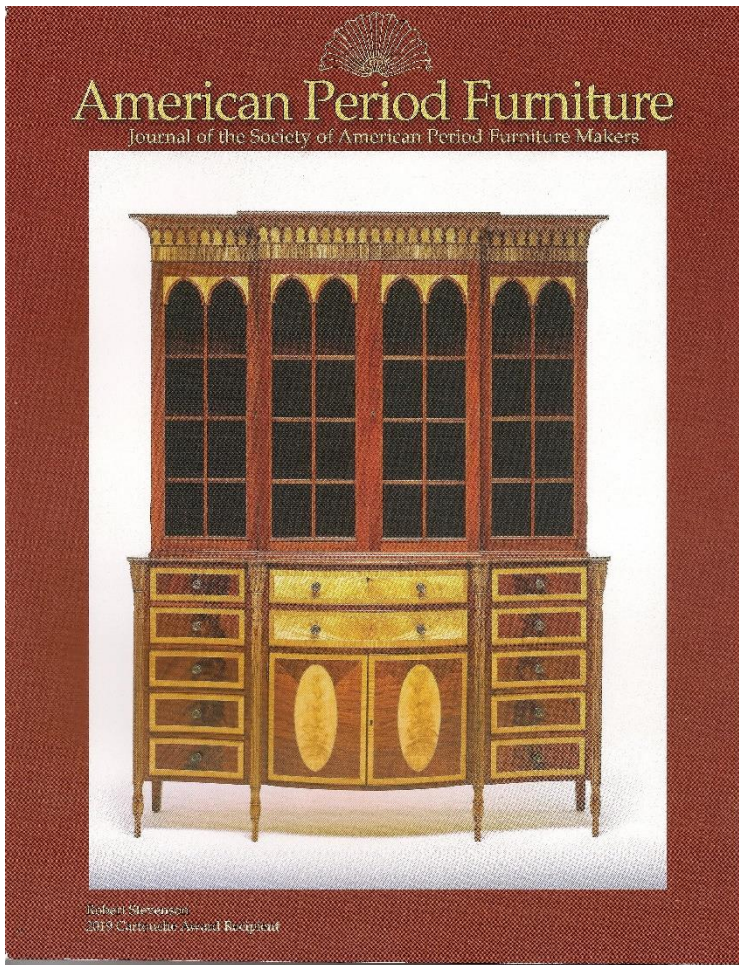
This is your exhibit, SDFWA. Let's make it the **VERY BEST**.

Ed Gladney Coordinator, Design In Wood
(858) 484-4366 home
EdGladney@san.rr.com

******* ANNOUNCEMENT *******

DESIGN IN WOOD

"EXTRA" APRIL MEETING



The **extra April meeting** will be the last Wednesday of the month, **April 29, 2020** at the same place as always, CHURCH. This will be the last meeting to sign up for walking the floor or working in the 19th century chair shop at the 2020 Design in Wood show.

The board assigned this meeting to me so whatever business we have, it will be short. I want to give as much time to the speaker as possible. The main event will be our own Bob Stevenson, winner of the coveted 2019 Cartouche award from the Society of Period Furniture Makers. Bob is, without a doubt, a master craftsman and an excellent teacher. Bob will be presenting a slide show on his original design and building of a Sheraton style breakfront inspired by the work of Thomas Seymour (1783 – 1824), (containing no less than eleven secret compartments). The original is with the owner, but I suspect Bob will be bringing some of the handwork he has from the construction of the piece. Bob is always a great presenter so this will be a fun meeting.

Don't miss it.

Ed Gladney
Design in Wood Coordinator
EdGladney@san.rr.com
(619) 251-4410 cell
(858) 484-4366 Home

2020 San Diego Fine Woodworkers Association

DIRECTORS

President:	Travis Good	703-635-0453	president@sdfwa.org
Vice-President:	Gary Anderson	619-670-1181	vice-president@sdfwa.org
Treasurer:	Randy Goodsell	619-238-4343	treasurer@sdfwa.org
Secretary:	Jeff Bratt	619-276-8641	secretary@sdfwa.org
Shop Representative	Pete Sterling	858-484-6696	ShopRepresentative@sdfwa.org
Member at Large:	Mike Davis	858-486-1014	MemberAtLarge@sdfwa.org

COMMITTEES

Community Outreach	Mike McElhiney	858-761-7020	outreach@sdfwa.org
Craftsman list:	VACANT – HELP NEEDED		craftsmanList@sdfwa.org
E-Mail List Manager:	Michael Lewis	619-370-1383	emailmanager@sdfwa.org
Historian:	Jeff Bratt	619-276-8641	secretary@sdfwa.org
Magazine & book sales:	Jeff Romek	760-213-0351	jeffromek@gmail.com
Membership:	Bryan Blacksher (C)	858-414-7233	sdfwa.membership@gmail.com
	Mike Davis	858-486-1014	sdfwa.membership@gmail.com
Membership Greeter:	Kevin Deal	951-565-6848	kevind1956@sbcglobal.net
Member Shop	Gary Anderson (C)	619-670-1181	pinz711@aol.com
	Pete Sterling	858-484-6696	psterli1@san.rr.com
Mentor Program:	VACANT – HELP NEEDED		mentorProgram@sdfwa.org
Merchandise:	Matt Evans	858-366-5499	mattsurfs20@gmail.com
Newsletter:	Tom Schulz	619-463-4010	newsletter@sdfwa.org
Pro Bono:	Jim Vitale	858-623-8630	jamespvitale@yahoo.com
Programs:	Del Cover	858-270-7739	del@delcoverwoodworking.com
Property:	Dale Stauffer	619-561-2202	ddstauffer77@gmail.com
Publicity:	VACANT – HELP NEEDED		publicity@sdfwa.org
Refreshments:	Don Spangler (C)	858-270-6165	coffeeorganic@hotmail.com
	Ron Rossi	619-582-9883	ronrossi@cox.com
	Carl Drake	619-446-7532	carl.drake03@gmail.com
	George Lattuca	858-337-7862	glattuca@san.rr.com
Resources/Raffle:	Jim Strawn	619-887-8090	jlstrawn@cox.net
Shop Tours:	Dale Stauffer	619-561-2202	ddstauffer77@gmail.com
Shows & Exhibits:	Ed Gladney	858-484-4366	edgladney@san.rr.com
Sound Technician:	VACANT – HELP NEEDED		ttait1@gmail.com
Special Events:	Ed Gladney	858-484-4366	edgladney@san.rr.com
Student Awards:	Jim Strawn	619-887-8090	jlstrawn@cox.net
Swap Meet:	John Orsini	619-992-1927	johnorsini12@gmail.com
Toy Program:	Roger Solheid (C)	858-279-1140	rsolheid@sbcglobal.net
	Terry Stolzoff	619-869-1347	woodycut@gmail.com
Video Library:	Richard Schulman	VIDEOS AVAILABLE AT MEMBER SHOP	
Photo/Video Technician:	Lou Adzima	619-922-0311	ilovejamul@cox.net
Wants and Disposals:	Dave Barnhart	760-721-1457	WantsAndDisposals@sdfwa.org
Web Site:	Jeff Bratt (C)	619-276-8641	webmaster@sdfwa.org
	Doug Murphy	619-994-0869	dw-murphy@cox.net

For committees with multiple members, (C) indicates the chair and primary contact person.

SDFWA 2020 Meeting Dates

<u>General Membership Meetings</u>	<u>Board Meetings</u>	<u>Rockler Old Tool Swap Meets</u>
Wednesday: March 25 (CANCELED) April 29 (DIW Special) May 27 July 29 (Outsider Expo) September 30 December 2 (Shop Expo)	Wednesday: March 4 May 6 July 1 September 2 November 4	<i>Annually on the 1st Sunday in the <u>following months:</u></i> April 5 August 2 November 1
<u>SDFWA Mailing Address</u>	<u>SDFWA Web Page Address</u>	6:00 am – 12:00 PM Rockler Woodworking parking lot 8199 Clairemont Mesa Blvd.
P.O. Box 82323 San Diego, CA 92138-2323	www.sdfwa.org	

Disposal Items for Sale:

3 Teak Bowls *Free*
10"x6", 9.5"x5", 5.75"x2.5"
760-419-7409 in Vista
brettharing01@gmail.com

8 Old Spindles *Free*
(from a table or a staircase rail)
in Fallbrook
760-553-8983
clansberry@yahoo.com

Tea Redwood Trunk *Free*
2' Tall, in Lemon Grove
Jeannette Cook 619-469-0254
bdidwmn@aol.com

Old Redwood Trunk \$299
3' Tall, in Vista
Joan Myers 760-940-8096
gemstoned@cox.net

3" Deep Throat "C" Clamps \$7 each
Gary Schmidt 626-200-6525
hoverlover@earthlink.net

Craftsman 4" Jointer #113.21861 \$40/obo
In Oceanside
760-721-1457
dakkod@gmail.com

Honduran Rosewood Log \$1000
12" Dia x 24" Tall, Approx. 85 Lb.
Ken Engle 760-723-4787
kcengle@roadrunner.com

Teak boards, Various Sizes \$10/board ft.
Edward Sides www.teakboards.com
e_sides@hotmail.com

Broad Leaf Maple Slabs from Canada
Kiln dried, & in barn for the last 1.5 years
\$7-\$10/ bd. ft. Various Sizes
in Warner Springs.
Geoff Thomas 760-990-3231
gcsthomas@me.com

Dewalt 12" Dbl-Bvl Slide Miter Saw \$500
1/2 HP 12" Var. Spd Bench Drill Press \$350
Dewalt 10" Table Saw w/ Roll Stand \$450
7-1/4" 15A Corded Circular Saw \$100
Bosch 2.3 HP Router \$275
Rockler Router Table \$300
Rockler Dust Collector \$200
Rockler Beadlock Pro Joinery Kit \$130
Lie-Nielsen Chisel Set 5/8", 3/8", 3/16" \$125
(and much more!)
Sonia 619-548-4895
sonia.p.moran@gmail.com

10 inch, 3-phase, Delta Unisaw \$800/obo
5 hp 110v Powermatic shaper \$750/obo
Power feeder is also available for best offer.
(All items have been in storage for 15 years.
The seller does not have 3-phase available to
test equipment).
In La Mesa
619-540-3396
janetminck@hotmail.com

3 HP Grizzly Shaper \$900
Near new. 220 single phase
w/ reverse switch, 7000 & 10,000 rpm
w/ guards, blades, mobile base
Brian Murphy 760-743-7912 (h)
americanfurniture@cox.net

**Craftsman 1hp router w/edge guide +
biscuit plate edge jointer w/manual** \$15.00
Amana 6" carbide dado set, in case \$20.00
Dovetail Fixture (never used) \$20.00
**Campbell Hausfeld 3.5hp compressor w/20
gal 125 psi horizontal tank w/manual** \$50.00
Al Bates
4S Ranch area
858-485-8310 (leave message)
bates.a@sbcglobal.net

Rare Specialty Wood \$Make Offer
Ironwood Stump
some 4x4 pieces of aged oak.
in Lemon Grove
Leave Message at 415-755-7096
mnhodges@cox.net

1/32" Bamboo Veneers \$50/(4 x 8' sheet)
100 Sheets Natural, 60 Caramel
& some broken/partial pieces
in El Cajon
619-922-5807
woodartdt@gmail.com

Delta Mortiser \$200
Porta Cable 15 Ga Nail Gun \$100
Grizzly 1 HP 4" inlet \$75
Rockler Steam Bending \$45
Bag Vacuum 4'x10' w/ 8' Spool Bd \$100
Router Tbl 3hp Vari-Speed Porta Cable \$475
(Also Panel and Shop Carts, Furniture Dollys,
Bar/C/Band Clamps, Router Bits, Propane
Heaters w/ Tanks, Lumber and Panels).
David Marlowe
In Chula Vista
619-206-3355
dmarlo553@gmail.com

5 prefab. Cabinet doors 32 1/4" x 15 1/4" \$20 all
Precut hinge slots, Hinges Includes
Skip 858-275-4707
skipflorey@icloud.com

Antique Carpentry Tools – Quick sell
Paul Maudlin
In Escondido
lvmjr77@gmail.com

2" Walnut Slabs: 60" ~\$300 108" ~\$550
10 Live Edge Norfolk Pine Slabs \$8/bdft
20-34" x 80" x 2.25"
& 12+" wide woodturning blanks from both
in Solano Beach
650-455-1004
tucker.translator@gmail.com

Updated List & Photos available on website.

Please check the website at www.sdfwa.org
or <http://www.sdfwa.org/wants-and-disposals/>

Sponsors

To receive your discounts, please show your membership card before you make a purchase

Bennett Crone Lumber and Plywood Inc.

www.bennettcrone.com

*** **NEW** ***

1202 Piper Ranch Rd, San Diego, CA 92154

Phone: (619) 661-0667

Hardwood, plywood, panels, molding, tools and hardware.

Bridge City Tool Works

bridgecitytools.com

*** **NEW** ***

10830 Ada Ave. Montclair, CA 91763

Phone: (800) 253-3332

Premier Woodworking Tools - Celebrating 37 Years in Business! Offering Chopstick Master, Jointmaker Pro, Planes, Layout Tools, and Japanese Saws.

We will offer your members a continuous 10% discount on the Bridge City Tool Works line. When they call to place the order at our office at 1-800-253-3332 (which they will need to do so that we can apply the 10% discount), they will need to give us their membership number.

DeWalt, Porter Cable, Delta Factory Service Center

7290 Clairemont Mesa Blvd., San Diego, CA 92111

Phone: (858) 279-2011

Hours: 7:30-4:30 M-F

Dave Stelmachowski, Manager

Porter Cable, DeWalt, Devilbiss, Black + Decker, Stanley, Bostitch, FLEX, and Oldham
Parts, Accessories, Repairs
Special consideration to SDFWA members

Environmental Spray Systems

www.espraysystems.com

Email: service@espraysystems.com

7114 Convoy Ct. San Diego, CA 92111

Phone: (858) 279-7114

Hours: 8:00-5:30 M-F

Sam Rinaker, Proprietor

Specializing in spray finishing equipment. Local distributor for Devilbiss, Graco, Paasche, Gema, and Anest Iwata products
10% discount to SDFWA members.

Fas-N-Go

2260 Main St. Suite 15, Chula Vista, CA

Phone: (619) 424-4774

Hours: 7:30-5:00 M-F

Nail guns, brads, staples, nails, plus accessories for nail guns and repair service. Distributor for 3M, Senco, Haubold, Josef Kihlberg, Spotnail, Hitachi, Bostich and Paslode.

10% discount on sales and service to members.

Frost Hardwood Lumber Company

www.frosth hardwood.com

"Everything in Hardwoods since 1911"

6565 Miramar Rd. San Diego, CA 92121

Phone (858) 455-9060 Fax (800) 258-3534

Hours: 7:00-4:30 M-F, 8:00-12:30 Sat

Jim Frost, Proprietor

With over a century in business, Frost Hardwood is dedicated to providing quality wood and related products to the woodworking industry. Our facility includes; full service custom milling, panel press and warehouse. Domestic and Import Hardwoods, Plywood's hardwood/softwood, Butcher Block, Veneers, MDF, MDO, Molding, Melamine TFM, Laminate HPL, Flooring custom/engineered, Tools, and Adhesives. The Frosts (G.T., Jim and Byram), along with their team, are here to help with all your wood working needs. Special SDFWA discount.

TH&H The Hardwood and Hardware Company

www.th-h.com

The Woodworkers one Stop for Material and Supplies

8849 Complex Dr. San Diego, CA 92123

Phone: (858) 536-1800 Fax: (858) 614-1811

Hours: 7:00-5:00 M-F, 9:00-4:00 Sat.

Tom Drinnon, Manager

Hardwood lumber, Moldings, Veneers, Cabinet Hardware, Finishes, Hand Tools and Supplies.
Contractor discount to members.

Mission Molding & Wood Specialties

www.missionmoulding.com

9510 Chesapeake Dr. # 401. San Diego, CA 92123

Phone: (858) 569-8591

Hours: 7:30-5:00 M-F, 8:00-1:00 Sat.

Bob Hawk, Manager

The sign inside Mission Molding's door says, "We have one of the largest selections of architectural and decorative moldings in Southern California." Select from more than 300 patterns in a variety of woods as well as polystyrene, fiberglass and primed plastic. The staff of Mission Molding can also supply you with mantels, handrails, balusters, columns and more. Depending on the item, members will get a 5% to 10% discount.

R. S. Hughes Co. Inc.

www.rshughes.com

2575 Pioneer, Ste.102, Vista, CA 92081-8309

Phone: (760) 579-0222

Hours: 7:45-5:00 M-F

Kurtis Lakhani, Manager

San Diego's largest inventory of 3M abrasives, adhesives, safety equipment and more. Phone orders/estimates. UPS shipping or walk in service available. 10% discount to members.

Rockler Woodworking and Hardware

www.rockler.com

8199 Clairemont Mesa Blvd. San Diego, CA 92111

Phone: (858) 268-1005

Hours: 9:00-6:00 M-F, 9:00-5:00 Sat., 11:00-4:00 Sun.

Mike Durlak, Manager

Rockler is an excellent source for hard to find hardware and accessories. Manager Mike Durlak and his staff can help you with good selection of hardware, exotic hardwoods, veneers, inlays, specialty moldings, fine woodworking hand tools, an impressive array of finishing materials, a great selection of books and plans, and weekly workshops in many disciplines. Visit this great woodworking source next time you need that special item no one else seems to have. Catalogues are available. 10% discount on general purchases (except power tools).

Russ Filbeck, Master Chair Maker

www.russfilbeck.com

Email: rcfilbeck@aol.com

Phone: (619) 972-1399

Make your own heirloom quality chair.

Chair styles include Appalachian Ladder Back and Windsor chairs. All materials, tools and instruction provided. Class size is limited to two students.

Use the web site, e-mail or call Russ to schedule your class.

10% discount for SDFWA members on the Two-Slat Ladder Back or Sack Back Windsor chair class.

San Marcos Hardwood Lumber Co

www.SanMarcosLumber.com

1415 Descanso Ave, San Marcos, CA 92069

Phone (760) 471-7777

Hours: Mon – Fri 6 AM to 4:30 PM, Sat. 8 AM - Noon

Don Widders, Manager

San Marcos Hardwood Lumber Co stocks a large selection of Domestic and Exotic Hardwood Lumber, Hardwood Plywood, Veneers, Live Edge Urban Lumber and Slabs, High-Pressure Laminates, Cabinet Hardware, Drawer Slides, Hinges, Saw Blades, Router Bits, Glues, and just about everything fine woodworkers and the furniture and cabinet industry require. Will-call and/or same day delivery available. Special orders are welcome. Don and his knowledgeable staff can help you choose the right material for your next project. Contractor discount to SDFWA members.

Shellac Finishes

www.shellacfinishes.biz

Email: sales@shellacfinishes.biz

Vijay Velji, Proprietor

Internet only. Shipped USPS

De-Waxed Shellac Flakes for classical woodworkers at very competitive prices.

SDFWA members must enter coupon code 1010 during checkout to receive a 10% discount

Signature Medallions

www.signaturesmedallions.com/

Phone: (619) 303-2876

Feel free to call with questions

Email: pinz711@aol.com

Gary Anderson, Proprietor

The Signature Medallions (a division of the company that does SDFWA membership pins) come in any size, shape, finish, or color. They are a very professional way to "sign" your work. SDFWA members get a 20% discount; Board members and Committee Chairs 40%. Gary will draw up a design for free, no obligation.

Strata Forest Products

www.strataforest.com

Email: bevans@strataforest.com

Email: jgriede@strataforest.com

165 Denny Way, El Cajon, CA 92020

Phone: (619) 449-9663

Hours: 7:00-4:00 Mon.-Sat.

Bob Evans & Jack Griede Proprietors

Strata Forest Products is a diversified company specializing in hardwood lumber, panel products and moldings. With years of experience, we have been serving design firms, architects, cabinet shops and the furniture industry in all their hardwood needs. From our wide range of hardwood species, to our custom knife grinding facilities, we have both the skills and tools to turn unique designs into reality.
Contractor discount to SDFWA members.

Tropical Exotic Hardwoods of Latin America

www.tehwoods.com/

2270 Camino Vida Roble, Suite "B",
Carlsbad, Ca. 92011

Phone: (760) 434-3030, Fax: (760) 434-5423

Hours: 8:30-4:30 M-F, 9:30-1:00 Sat.

Mitch Talcove, Owner/Manager

Specializing in a wide selection, varieties, sizes, and shapes of Exotic Hardwoods from Latin America. 10% off all purchases with valid SDFWA card (cash or check preferred if SDFWA is being applied).

Toolmart, Inc.

www.toolmarts.com

Email: purchasing@toolmarts.com

2750 Auto Park Way #13, Escondido, CA 92029

(800) 735-8665, (760) 480-1444 (Direct),

(760) 747-2626 (Fax)

Eric House, General Manager

Discount tool store and authorized repair center.
Contractor discount to members.

Vac-U-Clamp

www.vac-u-clamp.com

Email: barney@vac-u-clamp.com

4149 Avenida de la Plata, Oceanside, CA 92056

Toll-free Phone (888) 342-8262, Fax: (888) 357-4244

Barney Rigney, Proprietor

Vac-U-Clamp is the leader in vacuum forming and vacuum laminating technologies. We have a full line of vacuum presses, pumps, materials, and adhesives. Vac-U-Clamp is your single source for all vacuum forming and vacuum laminating products.
10% discount to SDFWA members.

West Coast Milling

westcoastmilling.com

P.O. Box 452058, Los Angeles, CA 90045

Phone: (760) 452-6556

Email: chris@westcoastmilling.com

Chris Platis

Decorative/structural beams, dimensional and furniture grade lumber, hand-hewn surfaces, live edge and specialty cuts, resawing, slabs

Woodworker West

www.woodwest.com

P.O. Box 452058, Los Angeles, CA 90045

Phone: (310) 216-9265 Fax: (310) 216-9274

Email: editor@woodwest.com

Ron Goldman, publisher

Published bi-monthly to promote craftsmanship in woodworking throughout the western U.S. Discount subscription rate to SDFWA members. \$10 for one year and \$18 for two year. When applying, after your name add SDFWA member and your member number.

Please check our website for updates:

www.sdfwa.org



Non-Profit Org.
U.S. Postage Paid
Permit 697
San Diego, CA

ADDRESS SERVICE REQUESTED

Next meeting: 7 pm, Wednesday, March 25th, 2020 at Our Mother of Confidence Catholic Church
3131 Governor Dr. at the corner of Regents Rd., in Serra Hall (Downstairs) **HAS BEEN CANCELED**

