



November Newsletter, 2018

Volume 37

Issue 7

Our 37th Year of Bringing Woodworkers Together

Next Meeting is 7 pm, Wednesday, November 28th,
at Our Mother of Confidence Catholic Church
3131 Governor Dr. - corner of Regents Rd.
Serra Hall (Downstairs)

November Program: **"The Best of Show"**



David O. Wade, winner of this years **"Best of Show"** in the 2018 Design in Wood Show will be our speaker. Like many of us, David started out making his own furniture on the balcony of his condo. Many years later he has become a

professional custom furniture maker in Orange County. For the program, David will be talking about his approach to the Greene and Greene furniture style and then move on to explain how he made the bolection inlay on the face of his winning chiffonier. You can preview some of David's work at www.davidowade.com

The meeting will be on Wednesday, November 28 at 7:00 pm at Our Mother of Confidence Catholic Church, 3131 Governor Dr. (corner of Regents Rd).

Hope to see you there,
Dell Cover,
Program Chair

September Raffle

James Strawn,
Raffle Program Chairman



1. Veritas Mark II Deluxe Honing Guide Set
2. Veritas Dovetail Saws – Set of 2
3. Two Cherries set of 6 Chisels in Leather Roll
4. Starrett Double Square – 4 in.

Shop Tour of Jim Strawn's Shop

December 1st, 2018 at 9 am



Dale Stauffer,
Shop Tours Chairman
ddstauffer77@gmail.com

Our next shop tour will be at the shop of Jim Strawn. Jim is a master Ukulele and Toy Maker. His address is 3644 Bonita Ranch Court, Bonita CA 91902. Here's a link to directions, (if you do that) <https://goo.gl/maps/G6V8TCX7Trk> or Jim's Phone number (619) 887-8090, (if you don't). The usual Coffee and Donuts will be available.



President's Message



Mike Davis, SDFWA President

A sharpening seminar was held on a Saturday at Dale Stauffer's workshop in Santee. There were more than 30 attendees who were given an overview of different sharpening systems from scary sharp to wet stones to modern machines like Tormek and Worksharp. Plus, we all got an intro to saw sharpening. It was an enjoyable and well-liked event and totally free! I think there are plans for holding another event like this so if you missed this one, it is definitely worth signing up for it next time. I want to thank Bob Stevenson, Jim Strawn and all the instructors (see page 18) who worked hard to put this seminar on.

Bob Stevenson was also announced as the recipient of the 2019 Cartouche award from the Society of American Period Furniture Manufacturers (SAPFM). The award will be presented on January 18, 2019 in Williamsburg, VA. This is a prestigious award given once a year to the individual whose lifetime achievements best reflect the mission of the SAPFM. See page 15 of this newsletter for more about the award. Congratulations to Bob on this richly deserved award.

WOOD X (a Furniture Show) will be held from January 11th to February 1st, 2019 at the Escondido Arts Partnership Gallery in downtown Escondido. This is the 10th annual exhibit and there are many fine woodworking exhibits there, including many from SDFWA members. You can find out more information about the show and/or how to enter at <http://escondidoarts.org/cal/wood-x-furniture-show/>. There is not much time before the entries must be complete, so take a look - and if you have any questions, feel free to call or

ask any member who is involved with the show.

Elections will be held at this month's meeting. We have a full slate of candidates (on page 7) that you will have a chance to vote on plus we can take nominations from the floor at the meeting. I hope you all attend and cast your vote for our candidates. We are also voting on some bylaws changes this year (see pages 5 – 7), so your presence is requested and needed.

This is my last president's message to you. It has been a privilege and an honor to have been your president for the last two years but it is time for me to move on to other things. I know that the new president will work hard to keep improving the association and making the meetings better for all who attend. I have been very thankful for the great work of all the board members who have been working with me including Bryan Blacksher, Steve Rogers, Jeff Bratt, and Bernie Burke. I hope our service to you has been good and the Association will continue and improve into the future.

~~~~~

## Toy Program Report

**Roger Solheid, Toy Program Chairman**

Since our last report the following toys have been completed:

49      Fire Engines                  Jerry's Toy Shop

49 total toy production for the period, to make  
**554 total for 2018.**

## Member Shop Project



Gary Anderson,  
Member Shop Chairman  
619-670-1181 [Pinz711@aol.com](mailto:Pinz711@aol.com)

This weekend is a big one at the Shop. We are hosting our first annual Holiday Gift Sale to benefit the ongoing operation of the Shop. Friday, Nov 16<sup>th</sup>, 3pm - 7pm and Saturday, Nov 17<sup>th</sup>, 9am - 4 pm, the Shop will become a showplace for the sale of a wide variety of items made by our Members. Our thanks go out to all the Members that either worked on “the build” or donated their own items. We’ve got lots to sell! Now, we just need buyers! Please help us by encouraging your friends, family and neighbors to visit the Sale. **This is important!** If you’d like a digital copy of the following sales flier, just email me, [pinz711@aol.com](mailto:pinz711@aol.com), and I’ll get it right out to you. If you’d like to help us run the sale, or market it, please let me know as well.

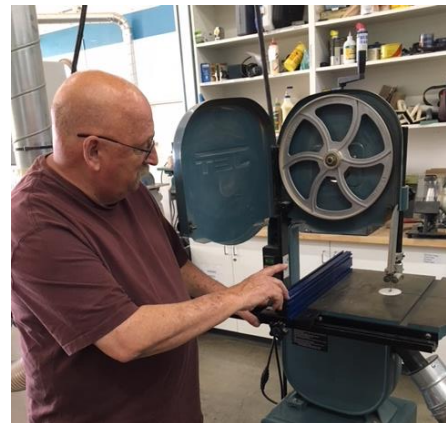
Al Gora headed up a great effort to include us in “Maker Faire” in Balboa Park in October. We had hundreds of people come by our booth, see items made by our Members, learn about the Shop and “make reindeer”. That’s right, Travis Good and his team produced over 600 reindeer cut-outs that the kids could



assemble. As you might imagine, we made a good many children VERY happy and got some parents interested in joining the Shop.

John Reiger, our Educational Director, has been working hard on developing plans for a “Carving School” at the Shop. Yes, I said “School”, not just “class”. If you have an interest in learning to carve, or building your skills, let John know. Carving is his passion and he’s looking for you! And you do NOT have to be a Member of the Shop to get involved.

This month’s “Eye Opener” falls on the Saturday of Thanksgiving Weekend. We thought about canceling it, but then we realized that by that time, a lot of us are looking for an excuse to get out of the house. So come join us at 9 am Saturday, November 24<sup>th</sup> for some relaxed conversation with other Members over coffee and donuts. Jim Strawn will be giving a brief demonstration on how you REALLY ought to change band saw blades and set the



machine for maximum performance. Then, if you have an interest in the Digital Tools, stick around for the Digital SIG (Special Interest Group) at 10 am. Congratulations to Lem Davis who purchased our “near-new” Dewalt Planer for \$300 at the October “Eye Opener” auction, about half of the retail price!

Finally, if you’re looking for the perfect Christmas gift, we have gift certificates for both Shop Memberships, Membership renewals and Classes. Santa has never had it so easy!

Happy Holidays from the Member Shop!



San Diego Fine Woodworkers Association  
Member Shop  
Presents

# Holiday Gift Sale

**Friday, Nov 16th (3pm-7pm)**  
**Saturday, Nov 17th (9am - 4pm)**

**Finish your Christmas shopping in one visit. Our Members have been creating classic, heirloom quality gifts that you won't find anywhere else. And you won't believe the prices! All proceeds benefit the Member Shop, a 501(c)(3) non-profit**



Serving Items

Keepsake Boxes

Jewelry

Cutting Boards

Wall Art

Toys

Ornaments

Bowls

Laser Cut Wine Boxes

Furniture Items

Pens



**SDFWA Member Shop**  
**5360 Eastgate Mall, Suite E**  
**San Diego, CA 92121**





# SDFWA Bylaws – Proposed Amendments

At the November 2018 Annual Meeting we will be voting on the following proposed amendments to the SDFWA Bylaws. There are 4 proposed amendments and we will consider each one separately.

Amendments to:

- a) Increase the number of Directors from 5 to 6 – adding a Shop Representative to the SDFWA Board of Directors (Articles 5 & 6)
- b) Add the Member Shop and associated educational activities to the Specific Purposes of SDFWA (Article 1)
- c) Add a section addressing sexual harassment (Article 3)
- d) Clarifying that the assets of SDFWA are irrevocably dedicated to community educational benefits – even upon dissolution of the Association. (Article 8)

Regarding the amendment to add a Member Shop representative to the Board of Directors... the first question that is always asked is about having an even number of people on the Board. The added paragraph about numbers and a quorum is simply a clarification of how a quorum works. This is not a change – we currently follow those rules. The added paragraph just makes it clearer and more explicit – since that question is always raised.

Note that the full Association Bylaws are available on our website – in the About Us menu category

<http://www.sdfwa.org/clientuploads/AboutUs/Bylaws.pdf>

If you have any questions about these amendments before the Annual Meeting, you may contact Mike Davis [president@sdfwa.org](mailto:president@sdfwa.org) or Jeff Bratt [treasurer@sdfwa.org](mailto:treasurer@sdfwa.org)

Proposed changes to the existing Bylaws text are in **red** (and/or **bold**); underlined text **indicates an addition**, strikethrough text **is to be deleted**.

---

## ARTICLE 1. PURPOSE

### Section 1. General Purposes

The San Diego Fine Woodworkers Association (henceforth referred to as the Association) shall be a non-profit, non-partisan organization dedicated to the education, promotion, and execution of the principles of fine woodworking through any lawful activity for which a corporation may be organized under the laws of the State of California.

### Section 2. Specific Purposes

The specific purposes ~~shall~~ include, **but are not limited to:**

- a) Public education of the principles of fine woodworking by the presentation of lectures, seminars, discussions, workshops, and field trips.
- b) The dissemination and exchange of data and information on indigenous and rare woods and associated fine woodworking methods.
- c) Public exhibition of the products of fine woodworking.
- d) The promotion and appreciation of the arts and skills of the ~~artisan~~ woodworker.
- e) Producing wooden items such as toddler chairs, toys and games for donation to charitable organizations.
- f) **Operating a Member Workshop to provide SDFWA members with access to woodworking tools and equipment, including classroom facilities for presenting woodworking classes and workshops.**

## ARTICLE 3. MEMBERS

### **Section 8. Harassment**

**SDFWA is committed in all areas to providing an environment that is free from harassment. Harassment based upon an individual's sex, race, ethnicity, national origin, age, religion or any other legally protected characteristics will not be tolerated. All members are expected and required to abide by this policy. No person will be adversely affected by bringing complaints of unlawful harassment.**

## ARTICLE 5. DIRECTORS

### **Section 2. Number and Qualifications of Directors**

The authorized number of Directors shall be ~~five (5)~~ **six (6)**. All Directors shall be current members of the Association.

### **Section 3. Election and Term of Office**

- a) The Board of Directors shall be elected by the members at the Annual meeting.
- b) The Directors shall hold office for a term of one year.
- c) The Directors shall hold office until their successors have been elected and have assumed office.
- d) A Director shall be eligible for re-election except the President, who is restricted to no more than four consecutive terms and may be re-elected after a one-year break in service.
- e) At the meeting of members prior to the Annual meeting, the Nominating Committee shall present a list of candidates for the offices on the Board of Directors. Further nominations will be accepted at the Annual meeting.
- f) The election of Directors shall be conducted in this order: President, Vice President, Treasurer, Secretary, **Shop Representative**, and Director at Large (if applicable).
- g) Prior to the election of the President, and at the conclusion of the election for each office, nominations from the floor will be taken for the next office to be voted on.
- h) Voting shall be by voice vote or by ballot if the voice vote appears to be close.

### **Section 11. Quorum**

A majority of the authorized number of Directors shall be necessary to constitute a quorum for the transaction of business, except to adjourn, as hereinafter provided. Every act done, or decision made, by a majority of the Directors present at a meeting duly held at which a quorum is present shall be regarded as an act done, or decision made, by the Board of Directors.

**If the number of Directors is even, then 50% + 1 is the number required for a quorum. Similarly, if the number of Directors present at a Board meeting is even, then 50% + 1 votes are needed for any measure under consideration to be adopted.**

## ARTICLE 6. OFFICES

### **Section 1. Directors**

The Association shall have a President, a Vice President, a Treasurer and a Secretary. The members that hold these offices plus **a Shop Representative and** the immediate Past President shall make up the Board of Directors. If the immediate Past President is not available to serve, or has been re-elected President, or has been elected to another office on the Board of Directors, then the ~~fifth~~ **sixth** member of the Board of Directors will be a Director at Large.

## Section 9. ~~Director at Large~~ Shop Representative

### The Shop Director shall:

- a) Identify and present the Member Shop positions on matters that come before the Board.
- b) Provide information to the Board on Member Shop operations, finances and activities.
- c) Review and coordinate all matters between the Shop Committee and Board all Shop items needing Board review or approval.
- d) Maintain an active and paid-up Shop membership for the full term of service on the Board.

## Section ~~9~~ 10. Director at Large

The immediate Past President serves as the ~~fifth~~ sixth Board member, as a Director at Large, to lend advice and support to the Board. This position provides for continuity of leadership from year to year.

## ARTICLE 8. MISCELLANEOUS

### Section 1. Checks and Drafts

All checks, drafts, or other orders for payment of money, notes or other evidence of indebtedness, issued in the name of, or payable by the Association shall be signed either by the Treasurer or by the President, or by the Assistant Treasurer for Shop expenditures.

### Section 11. Dissolution and Distribution of Assets

The assets and property of this organization are irrevocably dedicated to charitable and educational purposes meeting the requirements for exemption provided by section 214 of the California Revenue and Taxation Code.

In the event of dissolution of the Association, the assets remaining after payment of, or provisions for payment of, all debts and liabilities shall be distributed as set forth in the Articles of Incorporation to such qualified non-profit fund, foundation, association, or corporation as may be selected by the Board of Directors in accordance with section 214(a)(6) of the California Revenue and Taxation Code. This corporation may be dissolved by resolution of the Board of Directors after affirmative vote of two-thirds (2/3) of the number of members present at a meeting of members called and noticed as a Special meeting for the purpose of dissolving this corporation.

---

## 2019 Officer Nominations

|                      |               |
|----------------------|---------------|
| President:           | Travis Good   |
| Vice President:      | Gary Anderson |
| Treasurer:           | Jeff Bratt    |
| Secretary:           | Steve Rogers  |
| Shop Representative: | Pete Sterling |
| Member at Large:     | Mike Davis    |

# **2019 Design in Wood**

(We are looking for few good Woodworkers)

Planning for the 2019 San Diego County Fair has begun, and the theme is “*The Wizard of Oz*”. The fair website states “The San Diego Fair invites guests to skip down the yellow brick road and enter into an ‘Oz-some’ world inspired by L. Frank Baum’s classic tale, *The Wonderful Wizard of Oz*.”

Our Design in Wood juried exhibition is the granddaddy of Wood working shows. It has been copied by many other state fairs, but we are still recognized as the one to enter. This will be our 38<sup>th</sup> year and it keeps getting better every year. It takes a lot of people to put on the Design in Wood exhibition each year. I have a group of about 25 people that meet on the first Saturday of the month from January through May. We discuss various topics about setting up the show and new ideas around the theme or how we can improve things. This year we start setup on Sunday, May 12.

Our show is set up in the north half of the Mission Tower building. We start with a completely empty building. Everything you see at Design in Wood, (all the booths, cabinets, pedestals, platforms and miscellaneous equipment) are stored on the fairgrounds in three semi-trailers. Each year we have a planning committee consisting of volunteers from the Seaside Scrollers, the Regular Cutups Scroll saw club, the San Diego Woodturners, the Maritime Museum and the So. California Carvers Guild plus a staff of about 15 people that are part time employees of the fair. This is the core group that sets up and runs the Design in Wood show before and during the fair. Some of the staff have been with us for many years and are not getting any younger. So, we are looking for a few people who would like something to do from about May 12 through July 6. These are paid part time positions of 6 Hr. shifts consisting mostly of walking around the exhibit, answering questions and keeping a watchful eye on the entries. Setup starts with building the booths. We have volunteers to help with that. In addition, we have US Marines to do all the heavy lifting. The only qualifications are a cheerful attitude and a love of woodworking. If interested, please contact me or Dale Stauffer or Jim Strawn.

On another topic, I would like to see an increase in our entries made primarily with CNC and/or Laser machines. I only had four entries in two separate classes for this type of work. It is forcing me to combine these two classes into one class if I do not get more entries this year. I am requesting the member shop woodworkers who are using these machines to enter their work this year. Projects must be made by the person who enters. I plan to visit the member shop CNC/Laser class to talk about entering. Class projects are not eligible. Enter on line about the middle of February. See details in the brochure or online at <https://sdfair.com/exhibits/design-in-wood/>

Ed Gladney  
Coordinator, Design In Wood Exhibition  
San Diego Fair  
[EdGladney@san.rr.com](mailto:EdGladney@san.rr.com)  
[www.sdfair.com/design-in-wood](http://www.sdfair.com/design-in-wood)  
Home: 858-484-4366  
Cell: 619-251-4410

Also, see an article from the SAPFM “*Pins And Tales*” - Fall 2018 newsletter, starting on page 11.





**2019 San Diego County Fair, May 31 - July 4, Del Mar, California**

38th Annual Design In Wood Competition - An International Exhibition of Fine Woodworking



*Ed Gladney, Coordinator*

*Presented in association with the  
San Diego Fine Woodworkers Association*

## 2019 CALENDAR

### PLEASE READ THE ENTIRE BROCHURE BEFORE ENTERING

Registration is only accepted online. Visit <https://www.sdfair.com/entry> to enter and pay the processing fees. **Processing fees are non-refundable.**

**Entry Registration Deadline:** Friday, April 26, 2019. All registrations must be submitted online by 11:59pm (Pacific Daylight Time). Entry Office extended hours to 7:00pm on April 26. **Late Entries will not be accepted.**

**Notification of Accepted Project(s):** Notification of accepted work will be emailed by Wednesday, May 8, 2019

**Delivery of Entries:** Tuesday, May 21, 2019, Noon - 8:00pm (Shipped entries must arrive between May 13 – May 20)

**Awards Ceremony:** Thursday, May 30, 2019, 7:00pm - 9:00pm

**Judging Results:** Will be posted by Saturday, June 1

**Entry Pick Up:** Saturday, July 6, 2019, Noon - 8:00pm

### Questions?

Call the Entry Office at (858) 792-4207 or email [entry@sdfair.com](mailto:entry@sdfair.com)  
Monday through Friday from 10:00am to 4:00pm

**Digital Image Upload Support:** Need assistance with photographing your wood project? Make an appointment and bring your project to be photographed at the San Diego County Fair Entry Office. A staff member will take a photo of your project and assist you with the online entry process.

# CLASSES

---

- Class 001** Contemporary Woodworking - Furniture
- Class 002** Contemporary Woodworking - Accessories
- Class 003** Traditional Woodworking - Furniture
- Class 004** Traditional Woodworking - Accessories
- Class 005** Art Furniture
- Class 006** Chairs - (Furniture Made for Seating)
- Class 007** Furniture Designed & Created by Computer - Laser and/or CNC
- Class 008** Made for Children
- Class 009** Model Building - Scale
- Class 010** Model Building - Not to Scale
- Class 011** Musical Instruments
- Class 012** Clocks
- Class 013** Veneering/Marquetry - Furniture
- Class 014** Veneering/Marquetry - Art
- Class 015** Veneering/Marquetry - Art Designed & Created by Computer Laser and/or CNC
- Class 016** Wood Turning - Face Work: Perpendicular to the ways of the lathe
- Class 017** Wood Turning - Center Work: Parallel to the ways of the lathe
- Class 018** Wood Turning - Embellished/Mixed Media
- Class 019** Wood Turning - Laminated/Segmented
- Class 020** Wood Carving - Animals
- Class 021** Wood Carving - Birds
- Class 022** Wood Carving - Marine Animals
- Class 023** Wood Carving - Human Form
- Class 024** Wood Carving - Open
- Class 025** Scroll Saw - Intarsia
- Class 026** Scroll Saw - Fretwork (Pierced & Unpierced)

## AWARDS

**The following will be awarded in each class:**

|              |                   |
|--------------|-------------------|
| First Place  | \$200 and Rosette |
| Second Place | \$175 and Rosette |
| Third Place  | \$150 and Rosette |
| Fourth Place | \$ 75 and Rosette |

Honorable Mention Ribbons may be awarded at the discretion of the judges. No exhibitor will be allowed more than two monetary awards per class; however, there is no limit as to the number of rosettes or donated awards an exhibitor may win. Award checks will be available at entry pickup. Checks not picked up will be mailed within 30 days. We reserve the right to combine classes if insufficient entries are received in a class.

**Master Woodworker's Trophy** - \$250, Trophy & Rosette

**Theme Award** - \$250 & Rosette for the exhibit that best represents the Fair theme

**Robert & Janet Stevenson Award for Technical Excellence and Innovation** - \$200 & Rosette





# Design In Wood

BOB STEVENSON  
California

## DESIGN IN WOOD: AN INTERNATIONAL EXHIBIT OF FINE WOODWORKING

In 1981, a San Diego schoolteacher and part-time woodworker, Lynn Rybarczyk, used to marvel at the woodworker shows in the San Francisco area and wondered why the Southern California Exposition didn't have any woodworking.

He was told if he organized a group of local talent, a local woodworking show was indeed possible.

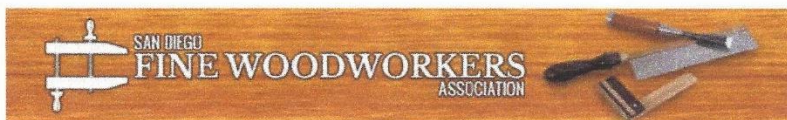
That same year, a woodworking store called The Cutting Edge was having a grand opening on Miramar Road in San Diego. Lynn set up a table out front and began signing up all who were interested to be members of the San Diego Fine Woodworkers Association. Eight months later, 35 of the 170

enthusiasm was directed toward developing the "Design in Wood" show as a prestigious annual event. Pat continued as superintendent for nine years, adding demonstrations of carving, turning, model building, and creating the 19th-Century Cabinet Shop, where children's chairs are made for donation to charitable organizations.

In 1987, inspired by the America's Cup, a Sponsor's Choice perpetual

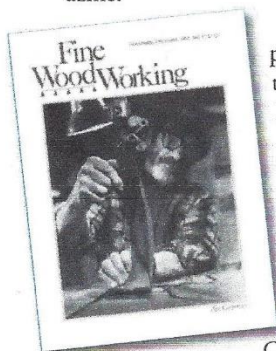


19th Century Cabinet Makers Shop



### The San Diego Fine Woodworkers Association

members of this fledgling organization entered 100 pieces of fine woodworking in the 1982 first annual "Design in Wood" show at the Del Mar Fair. Space allocation that first year necessitated the show be juried down to 45 pieces. The show was a great success and was written up in issue #37, Nov/Dec 1982, of *Fine Woodworking* magazine.



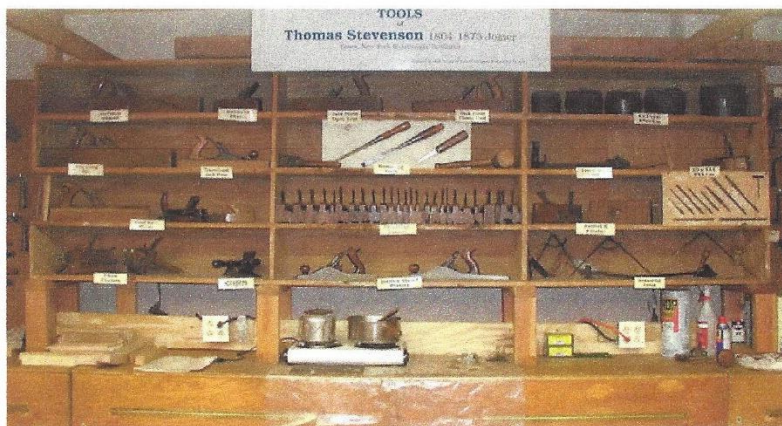
The first superintendent of the show, Chuck Masters, continued to run the show for five years. In September 1986, Patrick Edwards, the 2014 SAPFM Cartouche Award winner and owner and operator of Antique Refinishers in San Diego, relieved Chuck and took over as the new superintendent of the show. Pat's

trophy was created. By the 8th annual show, Pat had managed to increase the number of entries by 50% to 185 with total cash prize money of \$2,950. A total of 118 volunteers produced 48 oak chairs for charity, averaging one chair every five hours.

A steady cadre of members kept returning each year to make up the Show Committee. In 1995, Pat Edwards passed on the superintendent's job and

chairmanship of the Show Committee to his assistant at the show, Bob Stevenson, owner and operator of Stevenson's Classic Woodworking in Chula Vista, California.

The growth of the show continued under Bob Stevenson. Major awards by national woodworking magazines were added as were antique tools on display in the 19th-Century Cabinet Shop. The tool display, from the family of Bob Stevenson, was set up as a labeled educational exhibit. Members of the association demonstrated similar period tools.



PHOTOS PROVIDED BY AUTHOR AND USED WITH PERMISSION

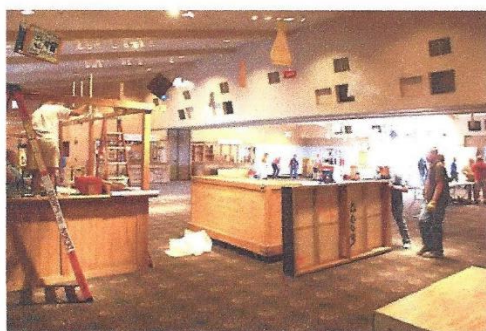




# Design In Wood

DESIGN IN WOOD: AN INTERNATIONAL EXHIBIT OF FINE WOODWORKING

The show made enormous leaps and bounds under Bob Stevenson's care. The number of entries increased to over 300 with prize money in excess of \$22,000 per show. The show is still a co-sponsored event between the 22nd District Agricultural Association and the San Diego Fine Woodworkers Association (SDFWA). In 1998, the show became an international exposition, having welcomed entries from Canada, Mexico, and Europe, as well as entries from all over the US.



Demonstration booths were designed by Bob Stevenson and his son Glen in 1998. A very large group of SDFWA members gathered at Broadway Pier in San Diego as guests of the Maritime Museum to build the four demonstration enclosures that make up the 12'x24' 19th-Century Cabinet Shop, as well as a turners' booth, a maritime booth, and a carvers' booth: each approximately 12'x12'. The enclo-

tures were made of T-111 plywood and 2x4 construction lumber. The design was unique in that bed rail hardware and carriage bolts were used to allow the enclosures to be disassembled and stored in their own specially designed crates, each built on heavy-duty dollies.

The San Diego Fairgrounds provides the SDFWA 7,500 square feet of open space in a secure, carpeted building. The amount of equipment display platforms, cases, pedestals, and walls that make up the gallery currently fill three semi-trailers. The set-up and take-down are accomplished in fewer than three days with volunteers from the different associations. Their only pay is free fair tickets and some lunches. The semi-trailers are stored at the fairgrounds.

Fifteen large display cases were designed and built along with four 150-cubic-foot shadow boxes in 2004. Each is self-sufficient and on wheels for easy storage. Again, about 15 members got together and, in two weekends,

completed the construction of these beautiful display cases.

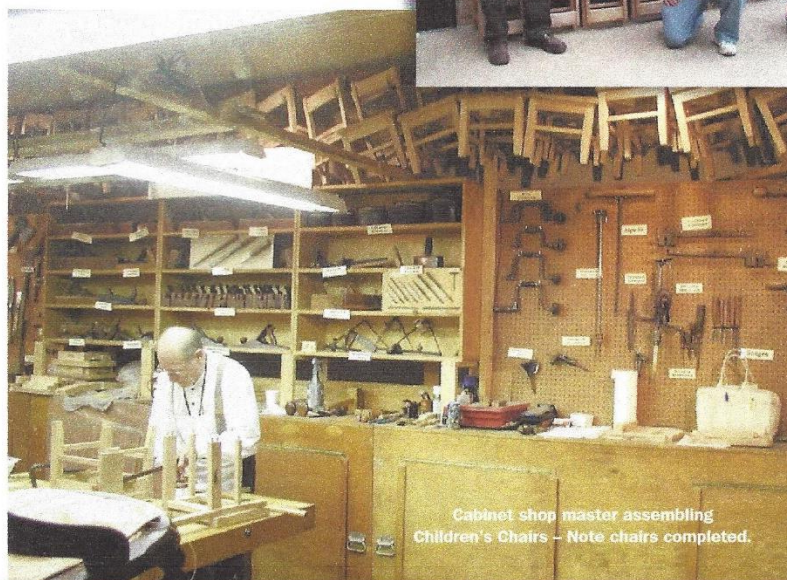
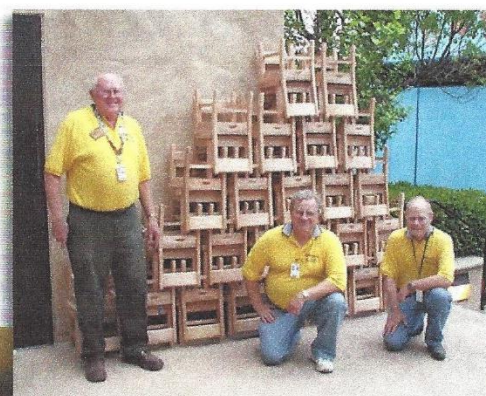
The "Design in Wood" show is such a draw for the County Fair that when funds are necessary to improve

## The 'Design in Wood' exhibition just completed its 37th annual show.

the show, the Agricultural District provides the funds and SDFWA makes it all happen with manpower and expertise.

At the close of the 2014 "Design in Wood" show, Bob Stevenson retired after coordinating the show for over 20 years. Bob, along with his wife,

Shop staff with their 50+ chairs completed at the end of the fair,



Cabinet shop master assembling Children's Chairs - Note chairs completed.





# Design In Wood

DESIGN IN WOOD: AN INTERNATIONAL EXHIBIT OF FINE WOODWORKING

Janet, volunteered thousands of hours preening and polishing this gem of a woodworking display for the public to appreciate.

June to July 4, many other activities take place. The 19th-Century Cabinet Shop still makes 50 oak children's chairs for charity during the day. The

19th-century woodworking techniques for the public. The parts are then assembled by the master shop foreman using hot hide glue, just as they would have been done 150 years ago. They are unfinished at this point.

After the fair, completed chairs are brought to the July general meeting and passed out to SDFWA members to take home and smooth and finish them. Once the chairs have their final coat of finish,

**"The San Diego Fine Woodworkers Association is one of the largest woodworking organizations of its kind in existence and continues to grow each year."**

The "Design in Wood" exhibition just completed its 37th annual show. Ed Gladney, an original member of the

group started building chairs in 1987 based on a 100-year-old antique children's chair. The goal is to build at least 50 chairs each year, but that number is usually exceeded. The red oak used for the chairs has been donated for many years to the group by Jack Griede of Strata Wood Products, formerly Lane Stanton Vance Lumber Company.

"Design in Wood" members mill the stock before the fair opens in the early part of the year. Patterns are used to ensure consistency. Wood is cut to rough size, milled, shaped, and drilled, and mortises and tenons are cut to prepare the stock for the final shaping. During the fair, the milled stock is smoothed and shaped by hand into final form by members of the San Diego Fine Woodworkers Association, who donate the time to demonstrate

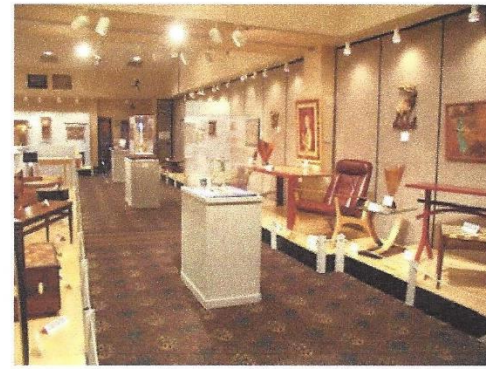


SDFWA and a 20-year staff member of "Design in Wood" took over the coordinator's duties from Bob Stevenson. He has continued to maintain the excellence of the show. There are now 26 classes of entries ranging from contemporary furniture to traditional furniture to model building and items made for children.

In addition to the juried gallery show, which runs annually from mid-



*Little Red Writing Desk*



they are distributed to non-profit organizations that can demonstrate a need for these beautiful chairs for children. Over the years, some 2,000 chairs have been distributed to various organizations. Non-profit organizations can request chair donations by visiting the "Design in Wood" information booth at the fair. The chairs are ideal for five-year-olds.

The amount of work that goes into





# Design In Wood

DESIGN IN WOOD: AN INTERNATIONAL EXHIBIT OF FINE WOODWORKING



Design in Wood Staff 2010

each chair is considerable. The generous volunteers of SDFWA do all the labor. If one had to put a value on one of these chairs, it would be in the \$300 to \$500 range. The chairs will last for centuries if properly cared for. SDFWA members get great pleasure from making and donating these fine chairs to worthy organizations.

During the show in the evening there are demonstrations of 19th-century woodworking, including Windsor chair making, inlay decoration, and musical instrument making, along with wood turning, carving, model building, and

scroll-sawing demonstrations. The activities of the show and demonstrations are staffed by the volunteer efforts of the 1,200 members of SDFWA and associated guilds.

In addition to the fair each year, the San Diego Fine Woodworkers Association, a non-profit corporation organized in 1982, has as its primary objectives education, promotion, and public appreciation of the principles and practices of fine woodworking.

The Association has numerous activities throughout the year including:

- Shop tours and bus field trips
- Seminars
- Toy-making programs
- Video and book library programs
- Scholarships offered to high school and college woodworking students
- Discounts at local suppliers
- Bimonthly meetings attended by approximately 300 members
- Newsletter
- A recently opened, fully equipped member shop and classroom

The San Diego Fine Woodworkers Association is one of the largest woodworking organizations of its kind in existence and continues to grow each year.



Newport Pembroke Table, Bob Stevenson 2018  
Winner in Traditional Woodworking—Furniture



<https://youtu.be/eaYw9ne4Qak>



### **Bob Stevenson selected as 2019 Recipient of the SAPFM Cartouche Award**

The Cartouche Award Committee is pleased to announce the selection of Bob Stevenson as the recipient of the 2019 SAPFM Cartouche Award. The Cartouche award recognizes an individual whose achievements best reflect the mission of SAPFM, as reflected in the lifetime achievement of the recipient. The award will be presented to Bob at the annual Cartouche Banquet to be held in conjunction with the Colonial Williamsburg Working Wood in the 18<sup>th</sup> Century conference.

The Chronicles article on Bob in the recent fall 2018 issue of *Pins and Tales* provides a great summary of Bob's path to master period furniture builder as well as his notable contributions to period furniture education and appreciation. (This article was entirely coincidental to Bob's selection as Cartouche recipient.) Bob was an inaugural member of SAPFM in 1999, helped establish the criteria for the Cartouche Award, and for many years was chairman of what is now called the Cartouche Award Selection Committee. With SAPFM member Brad Ormsby he founded the Southern California chapter and has contributed for many years to its success and growth. Following a highly successful 30-year health and space science career in the Navy, during which time he vigorously pursued art and woodworking hobbies, he pursued a second full-time career as a fine woodworking cabinet maker, including instruction for others.

For nearly two decades Bob was the Coordinator of the Design in Wood Show in Del Mar California, one of the largest international juried woodworking shows in the nation with over 350 yearly entries and nearly 1 million visitors each year. Throughout these years he became active in the impressive San Diego Fine Woodworking Association, all the while continuing his support for SAPFM and pursuing additional teaching and mentoring opportunities with youth in the community and with his woodworking peers.

Bob's furniture efforts eventually focused on the Federal Period, and he has entertained and educated SAPFM members with his impressive pieces shown in our publications and in our midyear meeting furniture displays. Stay tuned for additional presentation of his impressive work in *Pins and Tales* e-Magazine and our future *American Period Furniture* annual journal.

Please join fellow SAPFM members to help Bob and his family celebrate his achievements at the Cartouche Banquet and reception to be held in the Williamsburg Lodge at 6:00 pm on Friday, 18 January 2019. Online registration for the Banquet will open on our website in late November or early December. One need not be a participant in the Working Wood Conference to attend our SAPFM Banquet.



## Samuel Solomon Maloof, Woodworker

In 2007 I had the good fortune to attend a class organized by UC Riverside at the historic Maloof residence and shop in Alta Loma. Sam Maloof was with the group almost the whole day, ending with an informal chat in his living room. The experience was inspiring and entertaining beyond words. His charm and charisma were immediately obvious. At the end of the tour he signed a copy of his autobiography for me. (*Sam Maloof Woodworker by Jonathan Fairbanks 1983*). I happened to open the book recently and was reminded of his huge influence on the craft of woodworking and superb qualities as a person, I thought our SDFWA members might be interested in learning more about his life.

Sam (*in accord with Sam Maloof's famous modesty and humility I will refer to him by his first name*) was the seventh of nine children born in Chino California in 1916 to Slimen and Anisse Maloof who emigrated from Lebanon to California by way of Ellis Island in 1905. His father sold vegetables and dry goods, his mother sold lace, embroidery and crochet work; first from a horse drawn carriage, later from a store.

He learned Arabic from his parents and Spanish from their housekeeper before he learned English. His widowed sister and her six children came to live with the family during the depression; 14 people living in the 3 bedroom house at one point. As a child Sam displayed great talent for drawing and ingenuity, fixing and making items for the home; a spatula for turning bread, carved dollhouse furniture, cars and a toy revolver with a spinning chamber. He won a Southern California high school contest to make an advertising poster for the Padua Players theater group. Sam's formal education ended after high school. He earned money painting store windows and signs on buildings. In 1940 this work led to a job as a draftsman for Harold Graham, an industrial designer.

In 1941 Sam was drafted into the Army as a private. His skills were quickly recognized and he was put to work as a draftsman. He was eventually promoted to master sergeant and later posted to the Aleutians and Alaska.

After being released from active duty in 1945 he worked briefly as a graphic artist for Angelus Pacific, a decal company in Los Angeles. He enrolled in night classes at the Frank Wiggins Trade School, where he learned to use woodworking machines and started making furniture for his small apartment.

Harold Graham told Millard Sheets, a noted California artist and art director at Scripps College, about Sam in 1946. Millard Sheets hired him to do a silk screen. Over the next two years Sam worked as his assistant. Sheets introduced him to the world of painting, sculpture and other fine arts.

In 1948 Sam met Alfreda Ward who was studying for a Master of Fine Arts degree at Claremont College. They married soon after. When he could no longer give Sheets the undivided attention that studio work demanded, Sam began woodworking full time, at first, simple furniture using plywood salvaged by a friend from construction forms. To clean the plywood Sam had a tombstone cutter sandblast it which produced an attractive etched grain effect, a process later copied by U.S. Plywood. He purchased a home in a seven acre lemon grove in Ontario, California, built a workshop outfitted with rudimentary tools in the garage and began making furniture for his home.

Millard Sheets' brother-in-law photographed the interior of Sam's home for Better Homes and Gardens. The magazine then asked him to do drawings for woodworking plans to sell. He received a check for \$150 for his work. He said it "seemed like \$150,000". After two years with Sheets he left his job and became a full time woodworker.

Sam's first commission was a disaster when the interior designer insisted he finish a dining table, chairs and buffet with a dreary brown stain. The client liked it all except for the color. After carting it all back to the shop and stripping the stain, the cost of materials consumed his entire commission; a mistake that he did not make again.

In 1951 Sam received a call from Henry Dreyfuss, designer of the Super G Constellation airliner, Hoover vacuum cleaners and other iconic products, who had seen and liked his furniture. Sam made a dining room table and chairs, bedroom furniture and pieces for the Dreyfuss children for a fee of \$1,200. For the next five years commissions came from a designer showroom. After Individual commissions grew he took commissions directly from clients.

In 1957 a U.S. State Department sponsored program asked Sam to go to Iran and Lebanon to provide design and technical advice to local craftsmen In Teheran he made full scale drawings for 52 pieces of furniture using plastic and metal tubing as there was no suitable wood locally. A small shop made about 60 pieces. After three months there he flew to Beirut, and selected a modern furniture factory that had kiln dried wood plus finishing and upholstery departments. He made 35 drawings for six prototypes which were built in walnut. These continued to be produced for years until the Lebanese civil war destroyed the factory. In 1963 he spent three months doing similar work in El Salvador.

After his six month experience abroad Sam returned to California and quickly became recognized as a master of design and workmanship. In 1957 the American Craft Museum in New York presented his work in its first ever exhibition of a studio craftsman. He soon had a large backlog of commissions. Permanent collections of his furniture are now held in the, Metropolitan, Los Angeles, Philadelphia, Renwick and Boston Museums of art. Several U.S. presidents placed his renowned rocking chairs in the White House.

Over the next five decades, with the help of long time assistants (usually three) and an apprentice, Sam's output steadily increased from 50 to 300 pieces of furniture annually, to a point where clients were willing to wait years for delivery; cradles for an expected baby were moved to the head of the line. Sam's test for a new apprentice was to have the apprentice sand a part which Sam had shaped. If sanding destroyed the part, the apprentice failed the test.

In 1985 Sam Maloof became the first craftsman to receive a MacArthur Foundation Fellowship. The distinctive Maloof style is difficult to characterize, with elements of Scandinavian and Shaker design blended with subtle, organic curves, highly original joinery and wonderful surfaces. He was not a purist about joinery and used screws where pieces were too thin for a dowel or mortise and tenon. One only has to look at one of his drawings to appreciate his skill as a draftsman (see the last link below).

Sam used his own body to develop comfortable chair measurements and proportions. He loved hand tools but had no reservations about using machines. His technique for shaping curved pieces included free hand cutting on a band saw (this must be seen to be appreciated) and extensive use of rasps and grinders. He invented his own finish and turned it into a commercial product, but shared the recipe with his fans; equal parts of semi-gloss urethane varnish, raw tung oil and boiled linseed oil. A second version consists of equal parts of raw tung oil and boiled linseed oil plus a "by feel" amount of shredded beeswax. In different places in the book Sam states that he used a minimum of 3 or 6 applications.

He favored black walnut for most of his work; less often rosewood, English brown oak or cherry. He eventually accumulated a collection of half a million board feet of high quality lumber stored in two buildings on his property. His most complex project extended over 40 years; enlarging his home by 16 more rooms, adding handmade doors and windows, carved latches, hinges and door handles, a spiral staircase and toilet seats in English oak and walnut.

Alfreda, with whom he had a son, who also became a woodworker, and a daughter, died in 1998. Three years later Sam married Beverly Wingate, a longstanding family friend. In later years his production fell to 60 pieces annually.

In 2000 a route for the 210 Freeway project was to pass through Sam's property, threatening demolition of his home. Several of his patrons came together to have the home listed on the National Register of Historic Places.

State authorities then provided funds to move the house and shop to a new site in Alta Loma, three miles away. The site, operated by The Sam and Alfreda Maloof Foundation for Arts and Crafts, is open for docent led tours. It includes the historic home, Sam's workshop, the Water Wise Discovery Gardens and changing exhibits at the Jacobs Education Center Gallery. Sam continued to build furniture there until a few months before his death in 2009 at the age of 93.

Links to online sources:

<http://www.malooffoundation.org/>

<http://sammaloofwoodworker.com/>

<http://www.lacma.org/search/site/maloof>

<https://americanart.si.edu/artist/sam-maloof-6166>

<https://gallery.collectorsystems.com/MaloofOnlineGallery/2354>

Dick Ugoretz

October, 2018



## Editor's Note:

If you happen to be attending one of our many special events in between newsletters and happen to have a camera or smartphone with you, please take some pictures of our members enjoying the event. Then please send your best 1 or 2 photos to me at [newsletter@sdfwa.org](mailto:newsletter@sdfwa.org) for publication in our next newsletter.

Thank you,  
Tom Schulz  
Newsletter Editor

## Mentor Program - Sharpening Seminar

On Saturday, October 27<sup>th</sup>, our Mentoring Chair - Bob Stevenson, organized a FREE Seminar to teach more than 30 lucky members how to sharpen our Hand Planes, Scrapers, Chisels and Hand Saws. We learned at the wheels of our Mentors, (who were obviously Masters at their craft), to use Tormek and Worksharp grinders, and Veritas honing guides (see November Raffle Item 1!) on wet stones & Scary Sharp plates and even home-made jigs to sharpen hand saws. Many Thanks to Bob and his team of Mentors: Bob Bostic, Don Slaughter, Doug Parker, Ed Gladney, Jim Strawn, Ron Rossi, Phil Goettsch, and our shop host Dale Stauffer.





# 2018 San Diego Fine Woodworkers Association

## DIRECTORS

|                  |                 |              |                                                                        |
|------------------|-----------------|--------------|------------------------------------------------------------------------|
| President:       | Mike Davis      | 858-486-1014 | <a href="mailto:president@sdfwa.org">president@sdfwa.org</a>           |
| Vice-President:  | Bryan Blacksher | 858-414-7233 | <a href="mailto:vice-president@sdfwa.org">vice-president@sdfwa.org</a> |
| Treasurer:       | Jeff Bratt      | 619-276-8641 | <a href="mailto:treasurer@sdfwa.org">treasurer@sdfwa.org</a>           |
| Secretary:       | Steve Rogers    | 760-749-5652 | <a href="mailto:secretary@sdfwa.org">secretary@sdfwa.org</a>           |
| Member at Large: | Bernie Burke    | 760-723-0972 | <a href="mailto:MemberAtLarge@sdfwa.org">MemberAtLarge@sdfwa.org</a>   |

## COMMITTEES

|                         |                             |                                        |                                                                              |
|-------------------------|-----------------------------|----------------------------------------|------------------------------------------------------------------------------|
| Community Outreach      | Mike McElhiney              | 858-761-7020                           | <a href="mailto:outreach@sdfwa.org">outreach@sdfwa.org</a>                   |
| Craftsman list:         | <b>VACANT – HELP NEEDED</b> |                                        | <a href="mailto:craftsmanList@sdfwa.org">craftsmanList@sdfwa.org</a>         |
| E-Mail List Manager:    | Michael Lewis               | 619-370-1383                           | <a href="mailto:emailmanager@sdfwa.org">emailmanager@sdfwa.org</a>           |
| Historian:              | Lou Adzima                  | 619-922-0311                           | <a href="mailto:ilovejamul@cox.net">ilovejamul@cox.net</a>                   |
| Magazine & book sales:  | Jeff Romek                  | 760-213-0351                           | <a href="mailto:jeffromek@gmail.com">jeffromek@gmail.com</a>                 |
| Membership:             | Bryan Blacksher (C)         | 858-414-7233                           | <a href="mailto:sdfwa.membership@gmail.com">sdfwa.membership@gmail.com</a>   |
|                         | Mike Davis                  | 858-486-1014                           | <a href="mailto:sdfwa.membership@gmail.com">sdfwa.membership@gmail.com</a>   |
| Membership Greeter:     | Kevin Deal                  | 951-565-6848                           | <a href="mailto:kevind1956@sbcglobal.net">kevind1956@sbcglobal.net</a>       |
| Member Shop             | Gary Anderson (C)           | 619-670-1181                           | <a href="mailto:pinz711@aol.com">pinz711@aol.com</a>                         |
|                         | Pete Sterling               | 858-484-6696                           | <a href="mailto:psterli1@san.rr.com">psterli1@san.rr.com</a>                 |
| Mentor Program:         | Bob Stevenson               | 619-422-7338                           | <a href="mailto:mentorProgram@sdfwa.org">mentorProgram@sdfwa.org</a>         |
| Merchandise:            | Matt Evans                  | 858-366-5499                           | <a href="mailto:mattsurfs20@gmail.com">mattsurfs20@gmail.com</a>             |
| Newsletter:             | Tom Schulz                  | 619-463-4010                           | <a href="mailto:newsletter@sdfwa.org">newsletter@sdfwa.org</a>               |
| Pro Bono:               | Jim Vitale                  | 858-623-8630                           | <a href="mailto:jamespvitale@yahoo.com">jamespvitale@yahoo.com</a>           |
| Programs:               | Del Cover                   | 858-270-7739                           | <a href="http://del@delcoverwoodworking.com">del@delcoverwoodworking.com</a> |
| Property:               | Dale Stauffer               | 619-561-2202                           | <a href="mailto:ddstauffer@cox.net">ddstauffer@cox.net</a>                   |
| Publicity:              | Clare Pister (C)            | 434-989-2357                           | <a href="mailto:publicity@sdfwa.org">publicity@sdfwa.org</a>                 |
|                         | Lou Adzima                  | 619-922-0311                           | <a href="mailto:ilovejamul@cox.net">ilovejamul@cox.net</a>                   |
| Refreshments:           | Don Spangler (C)            | 858-270-6165                           | <a href="mailto:coffeeorganic@hotmail.com">coffeeorganic@hotmail.com</a>     |
|                         | Ron Rossi                   | 619-582-9883                           | <a href="mailto:ronrossi@cox.com">ronrossi@cox.com</a>                       |
|                         | Carl Drake                  | 619-446-7532                           | <a href="mailto:carl.drake03@gmail.com">carl.drake03@gmail.com</a>           |
|                         | George Lattuca              | 858-337-7862                           | <a href="mailto:glattuca@san.rr.com">glattuca@san.rr.com</a>                 |
| Resources/Raffle:       | Jim Strawn                  | 619-887-8090                           | <a href="mailto:jlstrawn@cox.net">jlstrawn@cox.net</a>                       |
| Shop Tours:             | Dale Stauffer               | 619-561-2202                           | <a href="mailto:ddstauffer@cox.net">ddstauffer@cox.net</a>                   |
| Shows & Exhibits:       | Ed Gladney                  | 858-484-4366                           | <a href="mailto:edgladney@san.rr.com">edgladney@san.rr.com</a>               |
| Sound Technician:       | Tony Tait                   | 619-723-4513                           | <a href="mailto:ttait1@gmail.com">ttait1@gmail.com</a>                       |
| Special Events:         | Ed Gladney                  | 858-484-4366                           | <a href="mailto:edgladney@san.rr.com">edgladney@san.rr.com</a>               |
| Student Awards:         | Jim Strawn                  | 619-887-8090                           | <a href="mailto:jlstrawn@cox.net">jlstrawn@cox.net</a>                       |
| Swap Meet:              | <b>VACANT - HELP NEEDED</b> |                                        |                                                                              |
| Toy Program:            | Roger Solheid (C)           | 858-279-1140                           | <a href="mailto:rsolheid@sbcglobal.net">rsolheid@sbcglobal.net</a>           |
|                         | Terry Stolzoff              | 619-869-1347                           | <a href="mailto:woodycut@gmail.com">woodycut@gmail.com</a>                   |
| Video Library:          | Richard Schulman            | <b>VIDEOS AVAILABLE AT MEMBER SHOP</b> |                                                                              |
| Photo/Video Technician: | Lou Adzima                  | 619-922-0311                           | <a href="mailto:ilovejamul@cox.net">ilovejamul@cox.net</a>                   |
| Wants and Disposals:    | Dave Barnhart               | 760-721-1457                           | <a href="mailto:WantsAndDisposals@sdfwa.org">WantsAndDisposals@sdfwa.org</a> |
| Web Site:               | Jeff Bratt (C)              | 619-276-8641                           | <a href="mailto:webmaster@sdfwa.org">webmaster@sdfwa.org</a>                 |
|                         | Doug Murphy                 | 619-994-0869                           | <a href="mailto:dw-murphy@cox.net">dw-murphy@cox.net</a>                     |

For committees with multiple members, (C) indicates the chair and primary contact person.

## **SDFWA 2018 Meeting Dates**

### **General Membership Meetings**

***Wednesday:***

November 28

### **Board Meetings**

***Wednesday:***

November 7

### **SDFWA Mailing Address**

P.O. Box 82323  
San Diego, CA 92138-2323

### **SDFWA Web Page Address**

[www.sdfwa.org](http://www.sdfwa.org)

## **Wants: There Are No Wants**

## **Disposals:**

**Delta 24" Scroll Saw** \$100 in Imperial Beach  
Charles Miner 619-424-8453  
[chas980@yahoo.com](mailto:chas980@yahoo.com)

**Tormek Supergrind 2000 Sharpener** \$650  
**w/ various sharpening accessories**  
Doug York 760-723-8860  
[dsyork@roadrunner.com](mailto:dsyork@roadrunner.com)

**Delta square chisel mortise #14-650** \$250  
**Delta Shopmaster 10" Miter saw** \$25  
**Craftsman 10" radial arm saw** \$75 obo.  
(and much more!)  
Chris Guelich 619-307-1896  
[chrisguelich@gmail.com](mailto:chrisguelich@gmail.com)

**Belsaw 12" Table Saw** \$1500  
**Hitachi 12" Slide Compound Saw** \$250  
**Grizzly 2 HP Hollow Chisel Mortiser** \$1000  
(and much more!)  
Maggie Wainscott 619-602-9518  
[wainscottm@gmail.com](mailto:wainscottm@gmail.com)

**Shopsmith Power Station #555422** \$300  
**Shopsmith 12" Pro Planer #514300** \$400  
**Shopsmith Bandsaw #505641** \$150  
**Shopsmith Scroll Saw #555220** \$400  
**Shopsmith 6" Belt Sander** \$175  
(and much more!)  
Patricia Wise 619-318-2496  
[racewise@gmail.com](mailto:racewise@gmail.com)

**Dewalt 12" Dbl-Bvl Slide Miter Saw** \$500  
**1/2 HP 12" Var. Spd Bench Drill Press** \$350  
**Dewalt 10" Table Saw w/ Roll Stand** \$450  
**7-1/4" 15A Corded Circular Saw** \$100  
**Bosch 2.3 HP Router** \$275  
**Rockler Dust Collector** \$200  
**Rockler Beadlock Pro Joinery Kit** \$130  
**Lie-Nielsen Chisel Set 5/8", 3/8", 3/16"** \$125  
(and much more!)  
Sonia 619-548-4895  
[sonia.p.moran@gmail.com](mailto:sonia.p.moran@gmail.com)

**Updated List & Photos available on website.**

Please check the website at [www.sdfwa.org](http://www.sdfwa.org)  
or <http://www.sdfwa.org/wants-and-disposals/>

## **Sponsors**

To receive your discounts, please show your membership card before you make a purchase

### **Damstom Panel Clamps**

<http://damstom.com/>

Email: [info@damstom.com](mailto:info@damstom.com)

Phone (450) 824-1592

The Damstom Panel Clamp system is a flat-panel guaranteed product, by helping to get good pressure and reducing the amount of tools from the conventional process. The D300 can make 38" wide glue-ups up to 4½" thick.

10% discount to members on every Damstom Clamp - use code SDFWA.

### **DeWalt, Porter Cable, Delta Factory Service Center**

7290 Clairemont Mesa Blvd., San Diego, CA 92111

Phone: (858) 279-2012

Hours: 7:30-4:30 M-F

**Dave Stelmachowski, Manager**

Porter Cable, DeWalt, Devilbiss, Black + Decker, Stanley, Bostitch, FLEX, and Oldham  
Parts, Accessories, Repairs  
Special consideration to SDFWA members

### **Environmental Spray Systems**

[www.espraysystems.com](http://www.espraysystems.com)

Email: [service@espraysystems.com](mailto:service@espraysystems.com)

7114 Convoy Ct. San Diego, CA 92111

Phone: (858) 279-7114

Hours: 8:00-5:30 M-F

**Sam Rinaker, Proprietor**

Specializing in spray finishing equipment. Local distributor for Devilbiss, Graco, Paasche, Gema, and Anest Iwata products  
10% discount to SDFWA members.

### **Fas-N-Go**

2260 Main St. Suite 15, Chula Vista, CA

Phone: (619) 424-4774

Hours: 7:30-5:00 M-F

Nail guns, brads, staples, nails, plus accessories for nail guns and repair service. Distributor for 3M, Senco, Haubold, Josef Kihlberg, Spotnail, Hitachi, Bostich and Paslode.

10% discount on sales and service to members.

### **Frost Hardwood Lumber Company**

[www.frosth hardwood.com](http://www.frosth hardwood.com)

"Everything in Hardwoods since 1911"

6565 Miramar Rd. San Diego, CA 92121

Phone (858) 455-9060 Fax (800) 258-3534

Hours: 7:00-4:30 M-F, 8:00-12:30 Sat

**Jim Frost, Proprietor**

With over a century in business, Frost Hardwood is dedicated to providing quality wood and related products to the woodworking industry. Our facility includes; full service custom milling, panel press and warehouse. Domestic and Import Hardwoods, Plywood's hardwood/softwood, Butcher Block, Veneers, MDF, MDO, Molding, Melamine TFM, Laminate HPL, Flooring custom/engineered, Tools, and Adhesives. The Frosts (G.T., Jim and Byram), along with their team, are here to help with all your wood working needs. Special SDFWA discount.

### **TH&H The Hardwood and Hardware Company**

The Woodworkers one Stop for Material and Supplies

[www.th-h.com](http://www.th-h.com)

8849 Complex Dr. San Diego, CA 92123

Phone: (858) 536-1800 Fax: (858) 614-1811

Hours: 7:00-5:00 M-F, 9:00-4:00 Sat.

**Tom Drinnon, Manager**

Hardwood lumber, Moldings, Veneers, Cabinet Hardware, Finishes, Hand Tools and Supplies.  
Contractor discount to members.

**Mission Molding & Wood Specialties**

[www.missionmoulding.com](http://www.missionmoulding.com)

9510 Chesapeake Dr. # 401. San Diego, CA 92123

Phone: (858) 569-8591

Hours: 7:30-5:00 M-F, 8:00-1:00 Sat.

**Bob Hawk, Manager**

The sign inside Mission Molding's door says, "We have one of the largest selections of architectural and decorative moldings in Southern California." Select from more than 300 patterns in a variety of woods as well as polystyrene, fiberglass and primed plastic. The staff of Mission Molding can also supply you with mantels, handrails, balusters, columns and more.

Depending on the item, members will get a 5% to 10% discount.

**Packaging Store**

[www.gopackagingstore.com](http://www.gopackagingstore.com)

7848 Silverton, Suite A, San Diego, CA 92128

Phone: (858) 549-7225; Fax: (858) 549-7274

Hours: 9:00-5:00 M-F

**Peter Wharf, Manager**

Custom boxes, crating, packaging supplies and shipping. Phone estimates and pick up service available. 10% discount to SDFWA members

**R. S. Hughes Co. Inc.**

[www.rshughes.com](http://www.rshughes.com)

2575 Pioneer, Ste.102, Vista, CA 92081-8309

Phone: (760) 579-0222

Hours: 7:45-5:00 M-F

**Kurtis Lakhani, Manager**

San Diego's largest inventory of 3M abrasives, adhesives, safety equipment and more. Phone orders/estimates. UPS shipping or walk in service available. 10% discount to members.

**Rockler Woodworking and Hardware**

[www.rockler.com](http://www.rockler.com)

8199 Clairemont Mesa Blvd. San Diego, CA 92111

Phone: (858) 268-1005

Hours: 9:00-6:00 M-F, 9:00-5:00 Sat., 11:00-4:00 Sun.

**Mike Durlak, Manager**

Rockler is an excellent source for hard to find hardware and accessories. Manager Mike Durlak and his staff can help you with good selection of hardware, exotic hardwoods, veneers, inlays, specialty moldings, fine woodworking hand tools, an impressive array of finishing materials, a great selection of books and plans, and weekly workshops in many disciplines. Visit this great woodworking source next time you need that special item no one else seems to have. Catalogues are available. 10% discount on general purchases (except power tools).

**Russ Filbeck, Master Chair Maker**

[www.russfilbeck.com](http://www.russfilbeck.com)

Email: [rcfilbeck@aol.com](mailto:rcfilbeck@aol.com)

Phone: (619) 972-1399

Make your own heirloom quality chair.

Chair styles include Appalachian Ladder Back and Windsor chairs. All materials, tools and instruction provided. Class size is limited to two students.

Use the web site, e-mail or call Russ to schedule your class.

10% discount for SDFWA members on the Two-Slat Ladder Back or Sack Back Windsor chair class.

**San Marcos Hardwood Lumber Co**

[www.SanMarcosLumber.com](http://www.SanMarcosLumber.com)

1415 Descanso Ave, San Marcos, CA 92069

Phone (760) 471-7777

Hours: Mon – Fri 6 AM to 4:30 PM, Sat. 8 AM - Noon

**Don Widders, Manager**

San Marcos Hardwood Lumber Co stocks a large selection of Domestic and Exotic Hardwood Lumber, Hardwood Plywood, Veneers, Live Edge Urban Lumber and Slabs, High-Pressure Laminates, Cabinet Hardware, Drawer Slides, Hinges, Saw Blades, Router Bits, Glues, and just about everything fine woodworkers and the furniture and cabinet industry require. Will-call and/or same day delivery available. Special orders are welcome. Don and his knowledgeable staff can help you choose the right material for your next project. Contractor discount to SDFWA members.

**Shellac Finishes**

[www.shellacfinishes.biz](http://www.shellacfinishes.biz)

Email: [sales@shellacfinishes.biz](mailto:sales@shellacfinishes.biz)

**Vijay Velji, Proprietor**

Internet only. Shipped USPS

De-Waxed Shellac Flakes for classical woodworkers at very competitive prices.

SDFWA members must enter coupon code 1010 during checkout to receive a 10% discount

**Signature Medallions**

[www.signaturemedallions.com/](http://www.signaturemedallions.com/)

Phone: (619) 303-2876

Feel free to call with questions

Email: [pinz711@aol.com](mailto:pinz711@aol.com)

**Gary Anderson, Proprietor**

The Signature Medallions (a division of the company that does SDFWA membership pins) come in any size, shape, finish, or color. They are a very professional way to "sign" your work. SDFWA members get a 20% discount; Board members and Committee Chairs 40%. Gary will draw up a design for free, no obligation.

**Strata Forest Products**

[www.strataforest.com](http://www.strataforest.com)

Email: [bevans@strataforest.com](mailto:bevans@strataforest.com)

Email: [jgriede@strataforest.com](mailto:jgriede@strataforest.com)

165 Denny Way, El Cajon, CA 92020

Phone: (619) 449-9663

Hours: 7:00-4:00 Mon.-Sat.

**Bob Evans & Jack Griede Proprietors**

Strata Forest Products is a diversified company specializing in hardwood lumber, panel products and moldings. With years of experience, we have been serving design firms, architects, cabinet shops and the furniture industry in all their hardwood needs. From our wide range of hardwood species, to our custom knife grinding facilities, we have both the skills and tools to turn unique designs into reality.

Contractor discount to SDFWA members.

**Tropical Exotic Hardwoods of Latin America**

[www.tehwoods.com/](http://www.tehwoods.com/)

2270 Camino Vida Roble, Suite "B",

Carlsbad, Ca. 92011

Phone: (760) 434-3030, Fax: (760) 434-5423

Hours: 8:30-4:30 M-F, 9:30-1:00 Sat.

**Mitch Talcove, Owner/Manager**

Specializing in a wide selection, varieties, sizes, and shapes of Exotic Hardwoods from Latin America. 10% off all purchases with valid SDFWA card (cash or check preferred if SDFWA is being applied).

**Toolmart, Inc.**

[www.toolmarts.com](http://www.toolmarts.com)

Email: [purchasing@toolmarts.com](mailto:purchasing@toolmarts.com)

2750 Auto Park Way #13, Escondido, CA 92029

(800) 735-8665 , (760) 480-1444 (Direct),

(760) 747-2626 (Fax)

**Eric House, General Manager**

Discount tool store and authorized repair center.

Contractor discount to members.

**Vac-U-Clamp**

[www.vac-u-clamp.com](http://www.vac-u-clamp.com)

Email: [barney@vac-u-clamp.com](mailto:barney@vac-u-clamp.com)

4149 Avenida de la Plata, Oceanside, CA 92056

Toll-free Phone (888) 342-8262, Fax: (888) 357-4244

**Barney Rigney, Proprietor**

Vac-U-Clamp is the leader in vacuum forming and vacuum laminating technologies. We have a full line of vacuum presses, pumps, materials, and adhesives.

Vac-U-Clamp is your single source for all vacuum forming and vacuum laminating products.

10% discount to SDFWA members.

**Woodworker West**

[www.woodwest.com](http://www.woodwest.com)

P.O. Box 452058, Los Angeles, CA 90045

Phone: (310) 216-9265 Fax: (310) 216-9274

Email: [editor@woodwest.com](mailto:editor@woodwest.com)

**Ron Goldman, publisher**

Published bi-monthly to promote craftsmanship in woodworking throughout the western U.S. Discount subscription rate to SDFWA members. \$10 for one year and \$18 for two year. When applying, after your name add SDFWA member and your member number.

Please check our website for updates:

[www.sdfwa.org](http://www.sdfwa.org)





**Non-Profit Org.  
U.S. Postage Paid  
Permit 697  
San Diego, CA**

**ADDRESS SERVICE REQUESTED**

**Next meeting: 7 pm, Wednesday, November 28<sup>th</sup>, 2018 at Our Mother of Confidence Catholic Church  
3131 Governor Dr. at the corner of Regents Rd., in Serra Hall (Downstairs)**

