

San Diego Fine Woodworkers Association

Volume 36

Newsletter April, 2017

Issue 3

Our 36th Year of Bringing Woodworkers Together

**The Next Meeting is 7 pm, Wednesday, April 26th,
at the Al Bahr Temple, 5440 Kearney Mesa Rd. (behind the Hampton Inn)**

April Program: Bob Bostick Presents Chair Building for DIW



**Del Cover,
Program Chairman**

Bob Bostick will present an in-depth discussion of what we do in the chair shop at the fair. A video overview (produced by Lou Adzima) of what Bob and Bill Thompson do to produce parts kits before the fair will precede tutorials on use of the tools to shape the various parts of the chairs. This year, volunteers will use templates to mark parts for shaping and Bob will illustrate how this is done. You'll see examples of each part before and after they have been shaped in the chair shop. Some parts require more work than others, so more time will be spent discussing how to saddle seats, shape crest rails, rear legs, and taper front legs. Removing mill marks and "breaking edges" on all parts will be covered as well. Special attention will be made to "grain direction" and how to avoid tear out. Bob will also demonstrate proper use of the various tools and how they are used to shape and finish the chair parts. You'll be made aware of how the parts relate to each other, and be provided with information that will allow you to answer questions the public may ask about the glue ups going on at the back bench.

Although we provide written guidelines for oil finishing the chairs when they are given out to volunteer finishers after the fair, Bob will offer

some tips on how to make this a more pleasurable experience and assure a fine result.

Bob will also discuss some of the past experiences we've had in the chair shop, and invite those of you who have worked in it to share some of yours. You'll also hear about feedback the association gets from the various children's charities who receive the finished chairs.

Hope to see you there, Del Cover

~~~~~ **Bob Stevenson's Shop, April 29th**



**Dale Stauffer,
Shop Tours Chairman**

The tour will start at 9:00 am; coffee and donuts will be served. Bob Stevenson is well known to the membership as a past Design In Wood Coordinator, Palomar College instructor, Chairman of the Mentoring program and much more. He builds wonderful pieces, many on commission, from his shop. He has too many tools to mention, but you might want to see his hand plane collection, among others.

Directions: From I-5: take the J Street off ramp and go 1 mile; turn left on Fig Avenue and go .1 mile; turn right on Halsey Street and go 259 feet; turn right on Guava and go 128 feet, the house is on the right at **662 Guava Avenue, Chula Vista.**

~~~~~

## President's Message, April, 2017



**Mike Davis, President SDFWA**

On March 21, there was a convention called World Wood Day which in spite of its name lasted a week from Mar 21 – 26. It was held in Long Beach where SDFWA had a booth handing out membership information, fair applications and information. Dick Ugoretz, Bryan Blacksher, Ed Gladney, Bernie Burke, Jeff Bratt and I staffed the SDFWA booth.

This show has been held once a year for the past five years. Previous shows have been in Tanzania, China, Turkey, and Nepal; this year's show was in Long Beach. The show had over 300 woodworkers from over 90 countries working with wood and learning how to work together. There were a lot of carvers in the show with about 100 of them broken up into groups of four people, who were given a blank slab of wood, roughly 12' x 3'. They were then told to go design and carve something. The results were nothing less than fantastic, with many beautiful and skillfully executed results.

There was also a competition for young adults to build a piece of furniture. The kids produced some impressive pieces with excellent joinery. There were also many turners using everything from small pen lathes, very large lathes, to foot powered devices for turning.

The California Carving Guild had a large exhibit of all kinds of carving from walking sticks, to figures, to boxes and many more; displaying their carving abilities.



There were scroll saws, wood typesetting, and all kinds of wood folk arts. In the folk art section was our own Russ Filbeck with an excellent display of his chair making prowess. He always had a bunch of people hanging around the booth to see what he was working on. Russ demonstrated various aspects of chair making;

including bent laminations and weaving seats with hickory bark.

The only thing that was missing was spectators. I think they numbered in the hundreds, which is relatively small. It was partially made up for by the hundreds of participants. The show did not get much advertising, which everyone realized and will correct in the future. In the end, there were rumors about setting up a show once every year in the US. If we get another chance to participate, I know I will be there and I would recommend that everyone who can go should do so.

Besides World Wood Day, we had a meeting on March 29<sup>th</sup> with Brian Lisus, violin luthier. I thoroughly enjoyed talking with him and hearing him talk about making violins. I am trying to make one myself, so we will have to see how that project turns out! I just wanted to try another woodworking experience and so far, it is a lot of hand work, but not too difficult. But the best is yet to come....

~~~~~

2017 Design In Wood



Ed Gladney
Special Events Chairman



2017 DESIGN IN WOOD EXHIBITION **CALLING ALL WOODWORKERS** **TIME TO GET YOUR ENTRIES IN!** **DEADLINE IS APRIL 28TH**

The fair has a new website this year and is open for entries. We have over \$20,000 in award money and merchandise with 25 State entry classes. Each class awards 1st through 4th place plus Honorable Mentions. In addition, there are 14 Donated Awards from our sponsors and 3 "Special" awards from the fair. Also, there are six awards reserved for SDFWA members. So get working on your winning entry. Your work will be on display to over one million fairgoers that visit our exhibit each year. Last year we had 1.5 million people attend the fair. A new record! Again, this year we hope to improve this exceptional international competition of fine woodworking. We have secured major commitments from our many corporate and local sponsors. Our co-sponsor, the 22nd Agricultural District, also looks forward to our successful exhibition.

This year's theme is **WHERE the WEST is FUN**. The 2017 San Diego County Fair will run from **Friday, June 2, opening at 4:00PM**, through **Tuesday, July 4**. The Fair will be closed all Mondays except July 3rd and the first three Tuesdays, June 6, 13 and 20.

Fine Woodworking Magazine returns as sponsor of the "Best of Show" award with a \$1,000 cash award. Not to be outdone, Popular Woodworking also has a \$1,000 award

consisting of \$500 cash and \$500 in merchandise.

Enter on line at:

<https://sdfair.com/exhibits/design-in-wood/>

There you will find the Design in Wood entry procedure, the entry brochure and all the rules for entering. All entry classes and awards are listed in our Information Brochure on also line at <http://www.sdfwa.org/design-in-wood-2017/>

Please note the calendar of events below:

Entry Deadline: Friday, April 28, 2017,

Exhibit Delivery Date: Thursday, May 25, 2017, noon to 8:00pm.

Exhibit Awards Ceremony: Thursday, June 1, 2017 at 7:00pm

Volunteers from our membership are desperately needed: Presently we have less than half of our volunteer slots filled!

NO experience is necessary to volunteer, and volunteering is very rewarding.

Detailed information at

<http://www.sdfwa.org/volunteer-duties/>

Sign up on line at

<http://www.sdfwa.org/volunteer-sign-up-design-in-wood-2017/>

We need members to "walk the floor", to help educate the public, and protect the exhibits. A shift is three hours. You receive two tickets for each shift or four tickets for each closing (last shift in the evening).

We need members to work in the chair shop, building children's chairs for charity. A shift is two hours. You receive two tickets for each shift.

Remember, sign up for a shift and get two (2) free tickets to the Fair. Sign up for several shifts and also get enough tickets for your family and friends.

We need help with set up starting Monday, May 15, at the fairgrounds Mission Tower building. Bring a screw gun, if you have one. There is lots to do. We have marines to do the heavy lifting. In addition to free fair tickets, enjoy coffee, juice, and donuts in the morning, a great lunch and refreshments throughout the day. Up to 4 tickets will be given to those who help with set up (exact number depends on amount of time helping).

AGAIN THIS YEAR: SIGN UP FOR THE CLOSING FLOOR-WALKING SHIFTS AND DOUBLE YOUR TICKETS TO FOUR (4) TICKETS FOR EACH CLOSING SHIFT

For those who help with set up, we have free tickets based on how much time you work, along with the refreshments and a great lunch.

Sign up to volunteer at www.sdfwa.org, or at the general meetings.

This is your exhibit SDFWA. Let's make it the **VERY BEST.**

Ed Gladney Coordinator, Design In Wood
858-484-4366
EdGladney@san.rr.com

~~~~~

## **Member Shop Project**



**Gary Anderson,  
Member Shop Chairman**

We continue to go through the process of obtaining a building permit from the City of San Diego to build out our new Shop site. As we expected, it is quite a challenging process. I won't bore you with the details. I'll just tell you that it will be a great day once the permit is finally issued! Our Shop Director, Pete Sterling has been working full time to push our application through. He's going to have quite the "war story" to tell once it's behind us.

Member, Joan Forbes was kind enough to convince a friend of hers, a retired sign maker, to help us with the signing for the new Shop. Thanks to her and Doug Tresser's generosity, our logo is now proudly displayed on the monument sign out by the street; as well as on the glass adjacent to the entry door to the Shop. Great work, Joan!



We just completed a "dry run" of the first training classes that will be offered at our new Shop. The Shift Manager Training includes the classroom portion of the Safety Training that all of us will need to complete. I'm pleased to report that this training, assembled primarily by Jeff Bratt, Mike Howell and Jim Covell is excellent. Those of you that attend will find it interesting, informative and useful.

Our "IT Expert", Brian Kranson has been very busy indeed. We now have internet access, wifi, and a phone line at the new Shop. Most importantly, he has found, procured and installed scheduling software that we'll be able to blend into our existing website to help us all interact with the Shop. You'll be able to sign up for Shift Supervisor slots, a class; and/or obtain up to the minute information about Shop hours, operation and equipment status. I've tried the software myself and am very impressed with how easy it is to use.



## April Raffle



**James Strawn,  
Raffle Program Chairman**

There will be one item raffled this month and it is a great one: a De Walt 20" Scroll Saw DW788 with stand. Come to the meeting and buy a lot of tickets!



If you have signed up for a Shop Membership, or been awarded one as a result of your donation to the Founders Group, you'll soon receive more information from me as to how your Membership will work.

Finally, we need some things for the Shop. We'll need three small desks and chairs for the Lobby and Office along with a good assortment of hand woodworking tools. If you have good used equipment you'd like to donate, let us know. Please understand that we want to stock our new Shop with equipment that is clean, and in good working order. If you can help, please contact Pete or myself.

Thanks for your ongoing support!

Gary Anderson  
Members Shop Chairman  
[Pinz711@aol.com](mailto:Pinz711@aol.com) 619-670-1181

**Lynn Rybarczyk sent in the following link which you may find very useful:**

Unable to recall the location of that favorite article you read the year before last? The most comprehensive index of woodworking articles in over 35 DIY and woodworking magazines.  
[Woodworking Magazine Index](#)

## ~~~~~ **NO MORE WOODWORKING BOOKS, VIDEOS, AND MAGAZINES**

Did you enjoy getting magazines, books, and videos during the SDFWA general meetings that members brought for your inspiration and education?

If no one volunteers, this service will not start up again as Mike Switalski, our wonderful volunteer in the past, has had to discontinue doing this for you.

It could work, if we can get several volunteers to be responsible for three to five milk boxes of items, set them out on the tables; and, then collect them at the end of the meeting. They can be brought in and taken back at a side door just outside the book table area.

**Please call Lynn Rybarczyk 619-741-5405 for volunteering. Thank you.**

## **Pro Bono Report**

**Jim Vitale, Pro Bono Chairman**

In the March newsletter, the following photo of one of the 50 jewelry boxes made by the SDFWA Toymakers was inadvertently omitted. My apologies, Adrian Larson, editor



The woman who gave the tour was Carolina Bridges. The brass ring she is holding is called the "TONE" used in some of the more expensive banjos.



All of the wooden banjo bodies are made of Red Maple from the eastern USA or Canada.



Janet Deering, the owner, in the shipping department.

Deering makes the following Banjos all under the Deering umbrella: Good Time; Vega; Penbrook; and Deering.

SDFWA had 45 people attend over the three days. Janet was impressed.

## **Toy Program**

**Roger Solheid, Toy Program Chairman**

Since our last report, the following toys have been completed in 2017:

|    |              |                  |
|----|--------------|------------------|
| 22 | Baby Beds    | Norm McHugh      |
| 30 | Cars         | Paul Trebbien    |
| 51 | Helicopters  | Jerry's Toy Shop |
| 9  | Teddy Bears  | Jim Bradbury     |
| 5  | Long Haulers | George Byrne     |
| 10 | Cars         | Charlie Brown    |

Our toy production total for the period was 127 and 351 for 2017.

## **Deering Banjo Tour**

**Photos and comments by Lou Adzima, SDFWA Historian**



## **Seminar Opportunity**

On April 21<sup>st</sup>, 22<sup>nd</sup>, and 23<sup>rd</sup> The Southern California Chapter of the Society of American Period Furniture Makers [www.sapfm.org](http://www.sapfm.org) are holding their annual Seminar. Phil Lowe will be demonstrating the making of a Philadelphia Low Boy at Cerritos College. For information on the event contact: Bob Stevenson [bobscww@cox.net](mailto:bobscww@cox.net) or Brad Ormsby [bormsby@sbcglobal.net](mailto:bormsby@sbcglobal.net)

~~~~~

Call For ART! At the Borrego Art Institute

Celebrating The Summer Show

May 6, 2017 - October 8, 2017

Celebrating the Summer Show is open to all art previously not shown at BAI. We will accept up to three pieces of art from artists and/or consignors. Work can be any medium or size, but must be in good shape and ready for presentation. WORK MAY BE BROUGHT IN STARTING APRIL 29. WE WILL ACCEPT ART ALL SUMMER. There will be a \$10 per submitted piece for non-members of BAI. There is no fee for members. Work not ready for display or of quality not up to BAI standards or policy will not be accepted.

For more information and/or inventory sheets, contact: gallery@borregoartinstitute.org

All items made from wood accepted; no size restrictions.

~~~~~

## **Brian Lisus, Violin Maker, Photos of the March General Meeting** **Program Provided by Lou Adzima, SDFWA Historian**





~~~~~

Steel for Woodworking



Article by Dick Ugoretz, Vice President

What do chisels, planes, spoke shaves, gouges, marking knives, etc. all have in common? Easy - a sharp edged blade made of steel. After sharpening my own chisel and plane collection; and, reading advertising and product reviews for woodworking blades; I began to wonder what the fuss was all about.

What I learned was considerably more complicated than I expected, and quickly led to a bewildering list of innumerable types of steel and ways to treat the metal after it is produced. In this article, I will attempt to review the origin

of steel and the properties of some of the most important types that apply to woodworking.

All steel starts as the elemental metal, iron, which comes from iron oxide deposits in the earth (iron ore). These have been mined in vast quantities since antiquity.



In the modern era, steel is made in a Blast Furnace (invented by Bessemer in 1855). The furnace is loaded with iron ore, small amounts of flux (limestone), and coke. To make coke, coal is heated to extremely high temperature in the absence of air which drives off volatile impurities leaving pure carbon. Air or pure oxygen heated to about 1200°C is blown into the furnace. The coke burns, producing enough heat to liquefy the iron and carbon monoxide which reacts with the liquid iron, creating a solution of iron and carbon. A tap at the bottom of the furnace is opened. Molten metal pours out. The flux with impurities (slag) floats to the top. The whole process, greatly simplified here, is called smelting.

Carbon remains mixed with molten iron as an alloy (pig iron). When the carbon content is between 2% and 6.67%, cast iron is produced. It can also be made by re-melting pig iron, scrap iron, steel, limestone and coke. In this process phosphorus, sulfur and carbon may be burnt out of the molten iron and carbon must be replaced. Cast iron can't be bent, stretched or hammered into shape; but is easily machined.

Wrought iron is produced when carbon content is kept very low, but other impurities remain. In contrast to cast iron, it can be worked by rolling, hammering or bending. In modern times it has been replaced by mild steel.

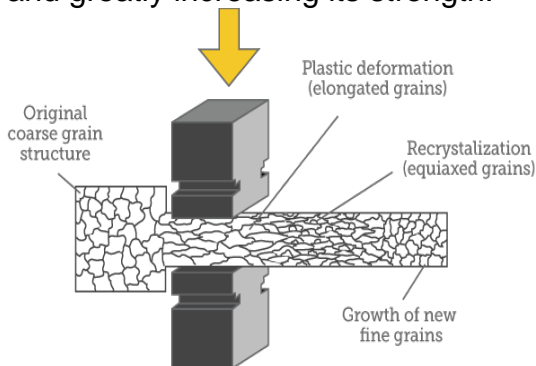
When carbon content is kept between 0.5% and 1.5%, steel (much harder and less brittle than cast iron) is produced. High carbon steel

for woodworking blades is at the upper end of that range. The chemistry of steel making gets extremely complicated at this point, involving microscopic phase changes, balance between temperature and carbon content, crystal structure, melting points, etc. For a good summary of the process, check this link.

<http://www.threeplanes.net/toolsteel.html>

Alloy steels are made by adding one or more of many different elements to the furnace: e.g. **manganese** to reduce brittleness, **silicon** to increase strength, **chromium** to increase resistance to corrosion (over 12% chromium makes stainless steel), **tungsten** to increase hot strength for high speed tools, and other elements too numerous to mention. There is no steel in carbide which is actually a compound of tungsten and carbon made by compressing powdered material at very high temperature with cobalt as a binder.

After molten steel solidifies, we tend to think of it as an inert substance. But the molecular structure and physical properties of solid steel can be altered by various additional treatments, such as **Forging**: Hammering, compressing or rolling heated steel, thus changing the grain structure from coarse to fine and greatly increasing its strength.



How the open die forging process affects the crystal structure.

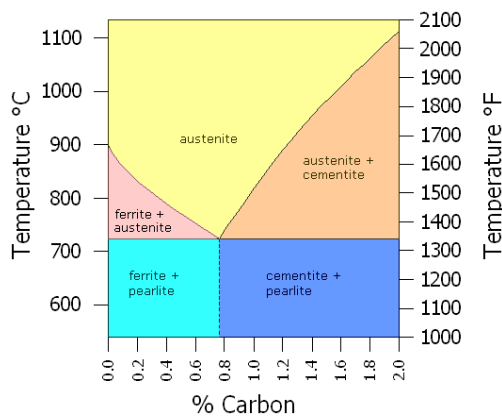
Annealing: Steel is heated to its hardening temperature; then cooled slowly to room temperature by burying it in an insulating medium such as lime or vermiculite. This softens steel for working.

Hardening/Quenching: Steel is heated to its hardening temperature, then cooled either suddenly by quenching in water or an oil bath, or slowly in air. **Tempering:** Hardened steel is

reheated to its tempering temperature. This relieves stress induced in the hardening process and decreases hardness in exchange for toughness. Untempered, hardened tool steel is nearly as brittle as glass. **Cryogenic treatment:** Steel is cooled to as low as minus 330°; a radical form of quenching which changes the molecular structure of steel and increases both hardness and toughness. In chemical language, this is a process that converts the austenite phase of steel to the martensite phase (see below); significantly increasing wear resistance. Changing details of all these processes (temperature, length of time at each step, choice of material used to quench, agitation) influences qualities like shear resistance, compressive or tensile strength, ductility and wear resistance.

Steel alloys for woodworking are: **O1 tool steel:** "O" for oil quench, the most common tool steel. Ron Hock uses it for his high carbon blades - "a simple high carbon tool steel with very little added other than 1.1% manganese.....that allows the steel to harden with an oil quench.....reducing the thermal shock that occurs when orange hot steel is plunged into water." **A2 tool steel:** "A" for air quench, differs from O1 steel with the addition of 5% chromium and 1.1% molybdenum, allowing it to quench in still air. This replaces oil hardening when safer hardening, less distortion and increased wear resistance are required. A2 steel also responds well to cryogenic treatment with excellent edge retention. Lie Nielsen uses the cryogenically treated version of A2 steel for bench planes and chisels. **PMV11 tool steel:** Introduced by Veritas in 2012, this proprietary alloy is created with powdered metal and said to be superior to all other woodworking blades. I have a shoulder plane with a PMV11 blade. It is the sharpest, most durable blade I have ever used. It was reviewed in FWW and Popular WW in October, 2012. **Japanese tool steel:** Traditionally called White steel (Shirogami) or Blue steel (Aogami), terms that simply refer to the color of the maker's wrapping paper. White steel has no added alloys other than carbon causing a narrow hardening temperature

range, requiring a high level of skill and leading to an excellent edge. These high quality blades overcome brittleness by lamination; hammer welding a layer of soft steel to a layer of harder edge steel. Blue steel is alloyed with tungsten and chromium, producing a longer lasting but not as fine an edge. The quality (and price) of Japanese blades, more than any other, depends on the maker's skill and reputation. Some master Japanese tool makers use steel salvaged from anchor chain recovered from old ship wrecks. I was skeptical about this practice until I learned about the austenite-martensite conversion in steel making, the basis for the processes of annealing, hardening and tempering (see the link below).



<http://www.threeplanes.net/toolsteel.html>

The same phenomenon occurs naturally over many decades in old anchor chains, reproducing the modern cryogenic process. **Damascus steel:** A legendary process invented in India around 600 BC; it results from repeatedly forge welding thin sheets of high and low carbon steel, producing an attractive pattern of swirling light and dark areas. The process was exported to China and Arabia in the 5th century and used to make swords and daggers. Attempts to reproduce the effect in modern times, more for artistic purposes than tool making, have had mixed results.

This all boils down to the fact that the choice of steel for chisels, plane blades, machine tools, saws, knives, etc. is a matter of balancing different qualities which are not always mutually compatible. **Hardness:** Resistance to permanent deformation (Rockwell scale).

Hardenability: Suitability for hardening by tempering, quenching, etc. **Strength:** Resistance to applied force. **Ductility:** Ability to bend without breaking. **Toughness:** Resistance to fracturing on impact. **Sharpness:** Precision and quality of the cutting edge. **Edge retention:** Ability of the blade to hold an edge. **Corrosion resistance:** Resistance to rust or stain on exposure to environment. **Wear resistance:** Ability to resist abrasion during use. **Manufacturability:** Ease with which steel can be tempered, shaped, machined, ground or formed.

Tradeoffs are required; sharpness for durability; wear resistance for ease of sharpening; etc. No one steel can meet all these requirements. But that's what makes life interesting.

~~~~~

# 2017 San Diego Fine Woodworkers Association

## DIRECTORS

|                  |              |              |                                                                        |
|------------------|--------------|--------------|------------------------------------------------------------------------|
| President:       | Mike Davis   | 858-486-1014 | <a href="mailto:president@sdfwa.org">president@sdfwa.org</a>           |
| Vice-President:  | Dick Ugoretz | 858-490-6295 | <a href="mailto:vice-president@sdfwa.org">vice-president@sdfwa.org</a> |
| Treasurer:       | Jeff Bratt   | 619-276-8641 | <a href="mailto:treasurer@sdfwa.org">treasurer@sdfwa.org</a>           |
| Secretary:       | Steve Rogers | 760-749-5652 | <a href="mailto:secretary@sdfwa.org">secretary@sdfwa.org</a>           |
| Member at Large: | Bernie Burke | 760-723-0972 | <a href="mailto:MemberAtLarge@sdfwa.org">MemberAtLarge@sdfwa.org</a>   |

## COMMITTEES

|                        |                     |              |                                                                              |
|------------------------|---------------------|--------------|------------------------------------------------------------------------------|
| Community Outreach     | Mike McElhiney      | 858-761-7020 | <a href="mailto:outreach@sdfwa.org">outreach@sdfwa.org</a>                   |
| Craftsman list:        | Ron Rossi           | 619-582-9883 | <a href="mailto:CraftsmanList@sdfwa.org">CraftsmanList@sdfwa.org</a>         |
| E-Mail List Manager:   | Harry Baldwin       | 858-278-8718 | <a href="mailto:EmailManager@sdfwa.org">EmailManager@sdfwa.org</a>           |
| Historian:             | Lou Adzima          | 619-922-0311 | <a href="mailto:ilovejamul@cox.net">ilovejamul@cox.net</a>                   |
| Magazine & book sales: | <b>VACANT</b>       |              |                                                                              |
| Membership:            | Bryan Blacksher (C) | 858-414-7233 | <a href="mailto:sdfwa.membership@gmail.com">sdfwa.membership@gmail.com</a>   |
|                        | Mike Davis          | 858-486-1014 | <a href="mailto:sdfwa.membership@gmail.com">sdfwa.membership@gmail.com</a>   |
| Membership Greeter:    | Kevin Deal          | 951-565-6848 | <a href="mailto:kevind1956@sbcglobal.net">kevind1956@sbcglobal.net</a>       |
| Member Shop Project    | Gary Anderson (C)   | 619-670-1181 | <a href="mailto:pinz711@aol.com">pinz711@aol.com</a>                         |
|                        | Pete Sterling       | 858-484-6696 | <a href="mailto:psterli1@san.rr.com">psterli1@san.rr.com</a>                 |
|                        | Jeff Bratt          | 619-276-8641 | <a href="mailto:jeffsd@san.rr.com">jeffsd@san.rr.com</a>                     |
| Mentor Program:        | Bob Stevenson       | 619-422-7338 | <a href="mailto:MentorProgram@sdfwa.org">MentorProgram@sdfwa.org</a>         |
| Merchandise:           | Matt Evans          | 858-366-5499 | <a href="mailto:mattsurfs20@gmail.com">mattsurfs20@gmail.com</a>             |
| Newsletter:            | Adrian Larson       | 858-672-1808 | <a href="mailto:newsletter@sdfwa.org">newsletter@sdfwa.org</a>               |
| Pro Bono:              | Jim Vitale          | 858-623-8630 | <a href="mailto:jamespvitale@yahoo.com">jamespvitale@yahoo.com</a>           |
| Programs:              | Del Cover           | 858-270-7739 | <a href="mailto:del@delcoverwoodworking.com">del@delcoverwoodworking.com</a> |
| Property:              | Dale Stauffer       | 619-561-2202 | <a href="mailto:ddstauffer@cox.net">ddstauffer@cox.net</a>                   |
| Publicity:             | Clare Pister (C)    | 434-989-2357 | <a href="mailto:publicity@sdfwa.org">publicity@sdfwa.org</a>                 |
|                        | Lou Adzima          | 619-922-0311 | <a href="mailto:ilovejamul@cox.net">ilovejamul@cox.net</a>                   |
| Refreshments:          | Don Spangler (C)    | 858-270-6165 | <a href="mailto:coffeeorganic@hotmail.com">coffeeorganic@hotmail.com</a>     |
|                        | Ron Rossi           | 619-582-9983 | <a href="mailto:ronrossi@cox.com">ronrossi@cox.com</a>                       |
|                        | Carl Drake          | 619-446-7532 | <a href="mailto:carl.drake03@gmail.com">carl.drake03@gmail.com</a>           |
|                        | George Latucca      | 858-337-7862 | <a href="mailto:glatucca@san.rr.com">glatucca@san.rr.com</a>                 |
| Resources/Raffle:      | Jim Strawn          | 619-887-8090 | <a href="mailto:jlstrawn@cox.net">jlstrawn@cox.net</a>                       |
| Scholarships:          | Jim Strawn          | 619-887-8090 | <a href="mailto:jlstrawn@cox.net">jlstrawn@cox.net</a>                       |
| Shop Tours:            | Dale Stauffer       | 619-561-2202 | <a href="mailto:ddstauffer@cox.net">ddstauffer@cox.net</a>                   |
| Shows & Exhibits:      | Ed Gladney          | 858-484-4366 | <a href="mailto:DesignInWood@sdfwa.org">DesignInWood@sdfwa.org</a>           |
| Sound Technician:      | Tony Tait           | 619-723-4513 | <a href="mailto:ttait1@gmail.com">ttait1@gmail.com</a>                       |
| Special Events:        | Ed Gladney          | 858-484-4366 | <a href="mailto:gladney@san.rr.com">gladney@san.rr.com</a>                   |
| Swap Meet:             | Don Spangler        | 858-270-6165 | <a href="mailto:coffeeorganic@hotmail.com">coffeeorganic@hotmail.com</a>     |
| Toy Program:           | Roger Solheid (C)   | 858-279-1140 | <a href="mailto:rsolheid@sbcglobal.net">rsolheid@sbcglobal.net</a>           |
|                        | Charlie Bierman     | 619-276-0048 |                                                                              |
|                        | Terry Stolzoff      | 619-869-1224 | <a href="mailto:woodycut@gmail.com">woodycut@gmail.com</a>                   |
| Video Library:         | Bob Reese           | 858-695-2460 | <a href="mailto:rreese@gmail.com">rreese@gmail.com</a>                       |
| Video Technician:      | Michael Fairbanks   | 619-465-4972 | <a href="mailto:mkfairdpmm@netscape.net">mkfairdpmm@netscape.net</a>         |
| Wants and Disposals:   | Dave Barnhart       | 760-721-1457 | <a href="mailto:WantsAndDisposals@sdfwa.org">WantsAndDisposals@sdfwa.org</a> |
| Web Site:              | Jeff Bratt (C)      | 619-276-8641 | <a href="mailto:webmaster@sdfwa.org">webmaster@sdfwa.org</a>                 |
|                        | Doug Murphy         | 619-441-9665 | <a href="mailto:dw-murphy@cox.net">dw-murphy@cox.net</a>                     |

For committees with multiple members, (C) indicates the chair and primary contact person.



# SDFWA 2017 Meeting Dates

## General Membership Meetings

### **Wednesday:**

April 26  
May 31  
July 26  
September 27  
November 29

### SDFWA Mailing Address

P.O. Box 82323  
San Diego, CA 92138-2323

## Wants:

## Disposals:

- **Saw Stop contractor table saw**, 1 ¾ hp, 52" professional T-Glide fence system including rails and extension table, cast iron wings, MB-CNS-000 mobile base, outfeed table, Excellent condition \$1700 OBO

**Mark Richardson 760-500-8101**

[mtrichard@sbcglobal.net](mailto:mtrichard@sbcglobal.net)

- **Gas Chain Saw Solo 636 \$60**  
**Susan Uznanski Poway area** [uzn@cox.net](mailto:uzn@cox.net)

- **Retirement Sale, Garage Sales** April 8<sup>th</sup> & 9<sup>th</sup>, starting approx. 10:00 am, also making phone call sales.

**Delta Limited Edition Unisaw**, left tilt, 3 hp, 50: Biesemeyer fence, mobile base, outfeed table, tenoning jig **\$1850**

**Jet bandsaw** with Kreg precision fence **\$800**

**Delta drill press \$500**

**Grizzly hollow chisel mortiser \$50**

**DeWalt 13" thickness planer,**

## Board Meetings

### **Wednesday:**

May 3  
July 12  
September 6  
November 1

### SDFWA Web Page Address

<http://www.sdfwa.org>

**Jet belt/disc sander,**  
**DeWalt compound sliding miter saw,**  
**Grizzly shaper model G1024,**  
**Delta variable speed bench grinder,**  
**Kennedy tool chest with tools,**  
**Harbor Freight air compressor,**  
**Laminating clamp set,**  
**Multiple pneumatic pin and nailers + tools,**  
**Leigh dove tail jigs,**  
**Jorgenson hand miter saw,**  
**Clamps, jigs and bits,**  
**Contour sanders,**  
**DeWalt biscuit joiner,**  
**HVLP sprayer,**  
**More items.**

**Carl Castillo**

7007 Del Cerro Blvd, San Diego 92120

**619-972-4203** [carl\\_castillo@earthlink.net](mailto:carl_castillo@earthlink.net)

- **Vintage Davis and Wells 12" table saw**  
serial # 596 cast iron table 30"x36", 1 ½ hp  
single phase 60hz 220/240 volt .  
**Tim Miley 760-855-9650** [twmiley@gmail.com](mailto:twmiley@gmail.com)

- **Grizzly dust collector**, 2hp, 220v, single phase, 1550 cfm, 2-4" inlets, works like new, purchased 2009. **\$175.**

**Steve Zonce** [zonces@gmail.com](mailto:zonces@gmail.com)

- **Craftsman table saw model 113**, 36" x 29" 35" high, on steel stand, enclosed bottom with 2 wheels, with rip fence and sliding miter gauge. 115v or 220 v AC single phase, 3450 rpm motor model 113.18032, style 341, ball bearing.

**Craftsman planer/jointer model 113.206930** 36" x 8", 35" high, on steel stand, 3450 rpm motor, model 113.12161, ½ hp, 8.4 amp, reversible.  
**Roger DeWeese 858-794-0342**  
[rdeweese@earthlink.net](mailto:rdeweese@earthlink.net)

- **Delta Model 23-725 Bench Grinder** ¾ hp motor, 120v, 1725 rpm, two 1"x8" wheels, water tray and utility light. **\$250,**  
**Larry Sherman 858-692-2963**  
[beboplar@yahoo.com](mailto:beboplar@yahoo.com)

- **Powermatic Scrollsaw \$300**  
**Mike Zukovich (619) 992-5066**  
[mikezukovich@icloud.com](mailto:mikezukovich@icloud.com)

- **Large collection of Fine Home Building and Fine Homebuilding Magazines,**  
Continuous from 1982 to present, and some issues from 1980 & 1981, **50 cents per copy OBO for whole collection.**

**Geetech floor standing hollow chisel mortising machine**, low use and accurate, includes set of chisels **\$400 OBO**

**Dayton brand industrial dust collectors**, both 2 stage 220 volt., one 1 hp/24" dia., one 1/3 hp/18" dia. Work great **\$150 OBO** for the pair  
**Glen Carlson 619-318-2496**  
[GlenPaulCarlson@cox.net](mailto:GlenPaulCarlson@cox.net)

- **Multiple Items:**  
Most items are new. A couple items were used once for a particular project.  
**\$4375 for the whole lot**

**Rockwell Delta 46-450 wood lathe**  
serial # FH-2685 **\$1500**

**Rare Rockwell Delta wood lathe cast iron tool stand #DDL181 \$199.00**

**Rockwell Delta Lathe steady rest**  
**\$100.00**  
**RD Gap filler block \$149.00**

**Rockwell Delta screw center with No. 2 MT**  
**\$29.00**

**Rockwell Delta lathe center \$11.00**

**Craftsman Spur Center No. 2 M.T. 9 21072**  
**\$30.00**

**Rockwell Delta 6" tool rest \$53.00**

**Rockwell Delta 24" tool support with 2 posts**  
**\$129.00**

**Spinning Tool Rest and fulcrum \$95.00**

**Craftsman Ball Bearing 60' Center No. 2 M.T, 9 21132 \$34.00**

**Rockwell Delta Banjo stock wrench \$29.00**

**Rockwell Delta 46-950 3 JAW 4" Leather Chuck**  
with two jaw sets **\$68.00**

**Rockwell Delta 46-490 Spinning Center**  
with Interchangeable Centers 60', Cup, and Flat  
**\$57.00**

**Rockwell Delta CWL=43 LATHE offset tool rest**  
holder extension **\$49.00**

**Jacobs Geared ½" drill chuck \$45.00**

**3" face plate \$20; 6" face plate \$39; 9" face plate \$46**

**No. of Rd Metal Spinning Tools set of 5**  
never used **\$375.00**

**Rockwell Delta Cup Center 2 MT replaceable tip**  
morse taper **\$14.00**

**Rockwell Delta Spur Center 4 spurs \$16.00**

**Rockwell Delta Wood Lathe metal turning**  
compound slide rest **\$250.00**

**Getting the Most Out of your Lathe wood/metal**  
turning book **\$19.00**

**Set of 4 Carbide Wood Turning Chisels**  
never used **\$200.00**

**Rockwell Delta Spur Center Drive \$29.00**

**Set of 10 HSS Wood turning chisels**  
never used **\$318.00**

**Rockwell Delta 46-480 Wood Turning Duplicator**  
**\$200.00**

**Rockwell Delta Right Angle 6" tool support**  
**\$39.00**

**Rockwell Delta #46-111 straight 12" tool rest**  
**\$34.00**

**Two Rockwell Delta DDL594**  
**tool rest holders AKA Banjo \$99.95 each**  
**Charles Anacker [charles@anacker.fr](mailto:charles@anacker.fr)**

- **1983 Grizzly Long Bed Jointer 1½ hp motor**  
Weight 450 lbs. runs good **\$350**

**1936 Craftsman Bench Lathe 9" swing, 44" bed**  
with wood and metal working accessories **\$150**  
**(858) 922-6848 [rbeuligmann@icloud.com](mailto:rbeuligmann@icloud.com)**

- **3/8" bender board**, Luan, 8' piece: 5' of board  
is 32" wide, 3' of board is 30" wide.

**Delta Shopmaster Miter Saw 10" blade \$25**

**Pony Clamps 3 sets, \$15 per set or \$35 for all 3**  
**sets**

**Rockwel Portaplane 126 \$120**

**Porter Cable Tiger Saw \$55**

**Delta Hollow chisel Mortiser model 14-650 \$250**

**Small Drill Press \$40**

**Bosch 7.25" circular saw**

**Craftsman 10" radial arm saw \$75 obo**  
**Chris Guelich [chrisguelich@gmail.com](mailto:chrisguelich@gmail.com)**  
**619-307-1896**

- **Hegner Multimax 18**, paid \$2200, taking  
reasonable offer, located in Fallbrook.  
**Ron [sox0840@gmail.com](mailto:sox0840@gmail.com)**

- **Felder BF-741 combination woodworking**  
**machine**, 3 motors 5.5hp 3 phase. **Saw:** cut height  
4", tilt table up to 45, cutting length 98".  
**Shaper/milling:** 3 spindle speeds, tilts from 90 to  
45, 9" tooling dia.  
**Planer:** 16 1/8" width, 1/8" to 8 5/8" height  
adjustment.  
**Jointer:** 16 1/8" width x 64" length.

**Extras:** rolling carriage, outrigger table, crosscut  
fence, Delta feeder. Weighs around 2300lbs., buyer  
must arrange transportation and lifting. **\$6000 OBO**  
**Thomas and Elizabeth Enright 858-481-2664**  
**[tenright@math.ucsd.edu](mailto:tenright@math.ucsd.edu)**

- **2hp dual tank compresor**, 125 psi, 4.6  
cfm, Hush series quiet compressor, **\$80.**  
**Delta 14-650 hollow chisel mortiser**, excellent  
condition, ¼" and 3/8" chisels **\$175.**  
**Skip Florey 858-275-4707 [skipflorey@icloud.com](mailto:skipflorey@icloud.com)**

- **Delta Unisaw 5hp, left tilt**, Biesemeyer  
fence and router table extension **\$2000.**  
**DeWalt 735 13" planer** with infeed/outfeed ramps  
on DeWalt stand **\$385**  
**Jet 6" jointer \$300** located in Scripps Ranch.  
**Paul Siegal [psiegal@san.rr.com](mailto:psiegal@san.rr.com)**

- **Grizzly 24" bandsaw 220v/50a, wit 4**  
blades ½"-2", 900lbs. **\$1500 OBO.**

**Grizzly hollow chisel mortiser 220v/20a, bits ¼"-**  
**1", on mobile base, 600lbs. \$1000 OBO.**

**Grizzly 24" wide belt sander** with digital readout &  
auto positioning, 220v/60a single phase, 4 belts  
and cleaning pad 1600lbs. **\$5000 OBO.**  
**If you buy all three tools above \$5000.**

**Grizzly 9 roller infeed outfeed stand \$100.**  
**Maggie Wainscott 619-602-9518**  
**[wainscott@ymail.com](mailto:wainscott@ymail.com)**

- **Powermatic M209 20" thickness planer**  
**\$1600.**  
**Exotic wood:** Bocote, Bubinga, Cherry, Cocobolo,  
Ebony, Guanando, Wenge, Goncalo Alves, Indian  
Rosewood, Ironwood, Jarrah, Koa, Mahogany,  
African Mahogany, Birdseye Maple, Hardrock  
Maple, Curly Maple, Osage Orange, Paduk,  
Pernambuco, Peroba, Philippine Mahogany,  
Purpleheart, Quilted Maple AAA, Rewarea, Cochin  
Redwood, Yang Wood, Satinwood, Teak, Burmese  
Teak, Tulipwood, Walnut, English Walnut S2S,  
Zebrawood. **Email for spreadsheet with sizes.**  
**[marywtooker@yahoo.com](mailto:marywtooker@yahoo.com)**



- **Rockwell 10" Unisaw \$500**

**Delta drill press \$175**

**Wagner CS800 HVLP sprayer \$300**

**Router table \$25**

**Dovetail template \$140**

**6' Ladder \$30**

**3 Small trim routers \$100 each**

**10" Bench saw \$25**

**13" Planer \$275**

**Porter Cable ¾hp router \$100**

**Black & Decker ¾hp Router \$90**

**Makita screw gun \$15**

**Rockwell flat sander \$45**

**Makita 3" planer \$175**

**Ryobi slot cutter \$150**

**Jet 8" jointer 5'6" bed \$400**

**Makita 4" grinder \$75**

**½" Auto hammer drill \$175**

**Milwaukee screw gun \$75**

**Hand grinder \$50**

**Festool sander \$175**

**Porter Cable nail gun \$120**

**Face Maker 3/8" bit \$150**

**Bob Evans** is helping sell these tools for a friend  
**Contact 760-525-8463**

Updated List and Photos available on website  
Please check the website at [www.sdfwa.org](http://www.sdfwa.org) or  
<http://www.sdfwa.org/wants-and-disposals/>

## Sponsors

To receive your discounts, please show your membership card before you make a purchase

### **Apollo Sprayers International, Inc.**

Email: [www.HVLP.com](http://www.HVLP.com) [www.](http://www.)

1040 Joshua Way  
Vista, CA 92081  
888-900-HVLP (4857)

Established in 1966, Apollo Sprayers International, Inc. manufacturer a complete range of High Volume Low Pressure (HVLP) spray finishing equipment for the professional woodworker and home hobbyist.

We are a small family owned business, owned and operated in Vista since 1989. We pride ourselves in producing high quality turbo spray systems and spray guns that we support with the highest possible level of customer service.

We also carry a complete line of finishing supplies through our virtual store located on the web at [www.TheFinishingStore.com](http://www.TheFinishingStore.com). Come by and read tips from expert finishers, subscribe to our monthly newsletter and peruse over 400 products all designed around making finishing easy.

### **Bayside Paint, Inc.**

[www.baysidepaint.com](http://www.baysidepaint.com)

Email: [info@baysidepaint.com](mailto:info@baysidepaint.com)

1228 Knoxville St., San Diego, CA 92120  
Phone (619) 275-7800  
Hours: 6:30 – 5:30 M-F, 8 -5 Saturdays  
**Robert Lewis, Manager**

Mohawk Finishing Products and many other stains, sealers, fillers and tools. Free delivery with minimum order and UPS shipping available.  
10% discount to SDFWA members

### **DeWalt, Porter Cable, Delta Factory Service Center**

7290 Clairemont Mesa Blvd., San Diego, CA 92111  
Phone: (858) 279-2012  
Hours: 7:30-4:30 M-F  
**Dave Stelmachowski, Manager**

Porter Cable, DeWalt, Devilbiss, Black + Decker, Stanley, Bostitch, FLEX, and Oldham  
Parts, Accessories, Repairs  
Special consideration to SDFWA members

### **Environmental Spray Systems**

[www.espraysystems.com](http://www.espraysystems.com)

Email: [service@espraysystems.com](mailto:service@espraysystems.com)

7114 Convoy Ct. San Diego, CA 92111  
Phone: (858) 279-7114  
Hours: 8:00-5:30 M-F  
**Sam Rinaker, Owner**

Specializing in spray finishing equipment. Local distributor for Devilbiss, Graco, Paasche, Gema, and Anest Iwata products  
10% discount to SDFWA members.

### **Fas-N-Go**

2260 Main St. Suite 15, Chula Vista, CA  
Phone: (619) 424-4774  
Hours: 7:30-5:00 M-F

Nail guns, brads, staples, nails, plus accessories for nail guns and repair service. Distributor for 3M, Senco, Haubold, Josef Kihlberg, Spotnail, Hitachi, Bostich and Paslode.  
10% discount on sales and service to members.

### **Frost Hardwood Lumber Company**

[www.frosthardwood.com](http://www.frosthardwood.com)

"Everything in Hardwoods since 1911"

6565 Miramar Rd. San Diego, CA 92121  
Phone [\(858\) 455-9060](tel:(858)455-9060) Fax [\(858\) 455-0455](tel:(858)455-0455)  
Hours: 7:00-4:30 M-F, 8:00-12:30 Sat  
**Jim Frost**

With over a century in business, Frost Hardwood is dedicated to providing quality wood and related products to the woodworking industry. Our facility includes; full service custom milling, panel press and warehouse. Domestic and Import Hardwoods, Plywood's hardwood/softwood, Butcher Block, Veneers, MDF, MDO, Molding, Melamine TFM, Laminate HPL, Flooring custom/engineered, Tools, and Adhesives. The Frosts (G.T., Jim and Byram), along with their team, are here to help with all your wood working needs. Special SDFWAdiscount.

**TH&H The Hardwood and Hardware Company**

The Woodworkers one Stop for Material and Supplies  
[www.th-h.com](http://www.th-h.com)

8849 Complex Dr. San Diego, CA 92123  
Phone: (858) 536-1800 Fax: (858) 614-1811  
Hours: 7:00-5:00 M-F, 9:00-4:00 Sat.  
**Tom Drinnon, Manager**

Hardwood lumber, Moldings, Veneers, Cabinet  
Hardware, Finishes, Hand Tools and Supplies.  
Contractor discount to members.

**TH&H** goes out of their way for SDFWA! They  
open their doors and stay late for our board meetings.  
Thanks **TH&H!**

**Tropical Exotic Hardwoods**

[www.tehwoods.com](http://www.tehwoods.com)

2270 C Camino Vida Roble, Carlsbad, CA 92011  
Phone: (760) 268-1080

#1 Source for wood, slabs, exotic and reclaimed lumber,  
turning stock, and more! 10% discount to SDFWA

**Lane Stanton Vance Lumber**

360 Vernon Way, El Cajon, CA 92020  
Phone: (619) 442-0821  
Hours: 7:00-3:00 M-F  
The company carries domestic and imported hardwoods,  
molding and panel products for cabinet makers, furniture  
makers and contractors. Contractor discount to  
members.

**Mission Molding & Wood Specialties**

[www.missionmoulding.com](http://www.missionmoulding.com)

9510 Chesapeake Dr. # 401. San Diego, CA 92123  
Phone: (858) 569-8591  
Hours: 7:30-5:00 M-F, 8:00-1:00 Sat.  
**Bob Hawk, Manager**

The sign inside Mission Molding's door says, "We have  
one of the largest selections of architectural and  
decorative moldings in Southern California." Select from  
more than 300 patterns in a variety of woods as well as  
polystyrene, fiberglass and primed plastic. The staff of  
Mission Molding can also supply you with mantels,  
handrails, balusters, columns and more.  
Depending on the item, members will get a 5% to 10%  
discount.

**Packaging Store**

[www.gopackagingstore.com](http://www.gopackagingstore.com)

7848 Silverton, Suite A, San Diego, CA 92128  
Phone (858) 549-7274  
Hours: 9:00-5:00 M-F  
**Peter Wharf, Manager**  
Custom boxes, crating, packaging supplies and  
shipping. Phone estimates and pick up service available.  
10% discount to SDFWA members

**R. S. Hughes Co. Inc.**

[www.rshughes.com](http://www.rshughes.com)

2575 Pioneer, Ste.102, Vista, CA 92081-8309  
Phone: (760) 579-0222  
Hours: 7:45-5:00 M-F  
**Kurtis Lakhani, Manager**

San Diego's largest inventory of 3M abrasives,  
adhesives, safety equipment and more. Phone  
orders/estimates. UPS shipping or walk in service  
available. 10% discount to members.

**Rockler Woodworking and Hardware**

[www.rockler.com](http://www.rockler.com)

8199 Clairemont Mesa Blvd. San Diego, CA 92111  
Phone: (858) 268-1005  
Hours: 9:00-6:00 M-F, 9:00-5:00 Sat., 11:00-4:00 Sun.  
**Mike Durlak, Manager**

Rockler is an excellent source for hard to find hardware  
and accessories. Manager Mike Durlak and his staff can  
help you with good selection of hardware, exotic  
hardwoods, veneers, inlays, specialty moldings, fine  
woodworking hand tools, an impressive array of finishing  
materials, a great selection of books and plans, and  
weekly workshops in many disciplines. Visit this great  
woodworking source next time you need that special  
item no one else seems to have. Catalogues are  
available. 10% discount on general purchases (except  
power tools).

**Russ Filbeck, Master Chair Maker**

[www.russfilbeck.com](http://www.russfilbeck.com)

E-mail: [rcfilbeck@aol.com](mailto:rcfilbeck@aol.com)

Make your own heirloom quality chair.  
Chair styles include Appalachian Ladder Back and  
Windsor chairs. All materials, tools and instruction  
provided. Class size is limited to two students.  
Use the web site, e-mail or call Russ to schedule your  
class.  
10% discount for SDFWA members on the Two-Slat  
Ladder Back or Sack Back Windsor chair class.



### **Shellac Finishes**

[www.shellacfinishes.biz](http://www.shellacfinishes.biz)

Email [sales@shellacfinishes.biz](mailto:sales@shellacfinishes.biz)

**Vijay Velji, Proprietor**

Internet only. Shipped USPS

De-Waxed Shellac Flakes for classical woodworkers at very competitive prices.

SDFWA members must enter coupon code 1010 during checkout to receive a 10% discount

### **Signature Medallions**

<http://signaturemedallions.com/>

Phone: (619) 303-2876

Feel free to call with questions

Email [pinz711@aol.com](mailto:pinz711@aol.com)

**Gary Anderson, Proprietor**

The Signature Medallions (a division of the company that does SDFWA membership pins) come in any size, shape, finish, or color. They are a very professional way to "sign" your work. SDFWA members get a 20% discount; Board members and Committee Chairs 40%. Gary will draw up a design for free, no obligation.

### **San Marcos Hardwood Lumber Co**

[www.SanMarcosLumber.com](http://www.SanMarcosLumber.com)

1415 Descanso Ave, San Marcos, CA 92069

Phone (760) 471-7777

Hours: Mon – Fri 6 AM to 4:30 PM, Saturday 8 AM - Noon

**Don Widders, Manager**

San Marcos Hardwood Lumber Co stocks a large selection of Domestic and Exotic Hardwood Lumber, Hardwood Plywood, Veneers, Live Edge Urban Lumber and Slabs, High-Pressure Laminates, Cabinet Hardware, Drawer Slides, Hinges, Saw Blades, Router Bits, Glues, and just about everything fine woodworkers and the furniture and cabinet industry require. Will-call and/or same day delivery available. Special orders are welcome. Don and his knowledgeable staff can help you choose the right material for your next project. Contractor discount to SDFWA members.

### **Strata Forest Products**

[www.strataforest.com](http://www.strataforest.com)

165 Denny Way, El Cajon, CA 92020

Phone: (619) 449-9663

Hours: 7:00-4:00 Mon.-Sat.

**Bob Evans & Jack Griede Proprietors**

Strata Forest Products is a diversified company specializing in hardwood lumber, panel products and moldings. With years of experience, we have been serving design firms, architects, cabinet shops and the furniture industry in all their hardwood needs. From our wide range of hardwood species, to our custom knife

grinding facilities, we have both the skills and tools to turn unique designs into reality.

Contractor discount to SDFWA members.

### **Tropical Exotic Hardwoods of Latin America**

[www.anexotichardwood.com](http://www.anexotichardwood.com)

2270 Camino Vida Roble, Suite "B", Carlsbad, Ca. 92011

Phone: (760) 434-3030, Fax: (760) 434-5423

Hours: 8:30-4:30 M-F, 9:30-1:00 Sat.

**Mitch Talcove, Owner/ Manager**

Specializing in a wide selection, varieties, sizes, and shapes of Exotic Hardwoods from Latin America. 10% off all purchases with valid SDFWA card (cash or check preferred if SDFWA is being applied).

### **Toolmart, Inc.**

[www.toolmarts.com](http://www.toolmarts.com)

2750 Auto Park Way #13, Escondido, CA 92029

1.800-735-8665 , (760) 480-1444 (Direct),

(760) 747-2626 (Fax) [purchasing@toolmarts.com](mailto:purchasing@toolmarts.com)

**Eric House, General Manager**

Discount tool store and authorized repair center.

Contractor discount to members.

### **Vac-U-Clamp**

[www.vac-u-clamp.com](http://www.vac-u-clamp.com)

Email: [barney@vac-u-clamp.com](mailto:barney@vac-u-clamp.com)

4149 Avenida de la Plata, Oceanside, CA 92056

Toll-free Phone (888) 342-8262, Fax: (888) 357-4244

**Barney Rigney, Owner**

Vac-U-Clamp is the leader in vacuum forming and vacuum laminating technologies. We have a full line of vacuum presses, pumps, materials, and adhesives. Vac-U-Clamp is your single source for all vacuum forming and vacuum laminating products. 10% discount to SDFWA members.

### **Woodworker West**

[www.woodwest.com](http://www.woodwest.com)

P.O. Box 452058, Los Angeles, CA 90045

Phone: (310) 216-9265 Fax: (310) 216-9274

E-mail: [editor@woodwest.com](mailto:editor@woodwest.com)

**Ron Goldman, publisher**

Published bi-monthly to promote craftsmanship in woodworking throughout the western U.S. Discount subscription rate to SDFWA members. \$10 for one year and \$18 for two year. When applying, after your name add SDFWA member and your member number.

Please check the website for updates:

[www.sdfwa.org](http://www.sdfwa.org)



**Non-Profit Org.  
U.S. Postage Paid  
Permit 697  
San Diego, CA**

**ADDRESS SERVICE REQUESTED**

**Next meeting: 7 pm, Wednesday, April 26<sup>th</sup>, 2017 at the Al Bahr Temple**

