

San Diego Fine Woodworkers Association

Volume 35

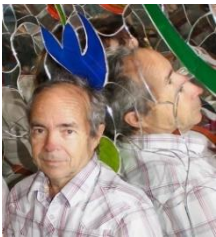
Newsletter November, 2016

Issue 7

Our 35th Year of Bringing Woodworkers Together

**The Next Meeting is 7 pm, Wednesday, November 30th,
at the Al Bahr Temple, 5440 Kearney Mesa Rd. (behind the Hampton Inn)**

November Program: Ken Cowell, 2016 DIW Best of Show Winner



**Dell Cover,
Program Chairman**

For November, we will have "Best of Show" winner Ken Cowell talking about his award winning piece, "The Tree of Life." Ken has been showing at the Design in Wood Show for several years and many of you may know Ken from his previous entries including his segmented bowl turnings and his 2014 Armoire "The Lady."

Ken is going to show how he built the "Tree of Life": the marquetry involved, hidden drawers and unique problems that he encountered with this piece. Ken teaches marquetry in Yorba Linda so this should be a great program in that we will get to see what actually goes into making a great piece like this.

See you there, Del Cover



Bayside Paint, January 14th



**Dale Stauffer,
Shop Tours Chairman**

On January 14th, we have a unique shop tour offered by Gary of Bayside Paints and Vijay of Shellac Finishes for SDFWA members. They are teaming up to present a program on finishing at Bayside Paints. After the introductory shop tour, they will offer a schedule of paid finishing classes which they will present at Bayside Paints on dates to be announced. These will be varied and quite interesting, if you choose to participate. Further information on the tour and classes offered will be forthcoming.

Directions: Bayside Paint is off I-5 near Mission Bay. From I-5, take the Tecolote Road exit; turn east onto Tecolote Road; take the first left onto Morena Blvd; take the first left onto Knoxville Street, 1228 Knoxville Street is on the right.

~~~~~

## **President's Message,** **November 2016**



**Bernie Burke,**  
**President SDFWA**

Since you are reading this, it's probably fair to assume that the goblins didn't get you over the Halloween holiday. Now we all have to survive the relatives visiting for Thanksgiving. Seriously, I hope everyone is enjoying fall with some cooler weather and more to look forward to, I am especially looking forward to the ski season at Mammoth. And, to escape the great rain storms we expect this season, maybe we will all be able to get back out to the shop and enjoy some WOODWORKING.

This is a wrap-up newsletter article for me, as my term as President is coming to a close. It has been a real honor to serve you over the past two years as your president and the three years before that as your Treasurer. Although I expect to remain active in this great organization, it's time for a break and for you to benefit from some fresh leadership. I feel good about what we have accomplished over this time period, and am so grateful for the support of our other officers, all the committee chairmen and members that make everything happen. Please continue to support the new officers.

Thank goodness the election is almost over but now it's time for us to have our own election of new officers; this will take place at our next meeting, 7 PM on November 30 at Al Bahr Temple. So please come out and join us. Our Nominating Committee (Jim Strawn and Tony Tait) put forward a great slate of proposed new officers beginning with Mike Davis, who graciously agreed to make himself available to be your new Presiden; supported by (former President) Dick Ugoretz as Vice President, Steve Rogers as Secretary, Jeff Bratt as Treasurer and myself as an at-large Board member.

Don Spangler has served us so very faithfully for the past several years as chairman of the Refreshments committee. Mike Switalski has also done a great job for the last couple of years as chair of the Magazine Sales activities. But, both of these fellows have informed me that they must step down from their responsibilities at the end of December. We really need someone to step into each of these important positions. If you would be willing to consider doing either of these activities, please let me know so that we can discuss how we can continue to offer these highly valued services to our members.

It is just great how you have supported the Member Shop proposal. Thanks to all of you who so generously donated the funds which will allow us to pay for all the tools up front, and to those who have already signed up to be members of the shop. Since it was clear that we have the funds to open the shop without endangering the overall financial health of the organization, the Board authorized Gary Anderson and his committee to get serious about shopping for a site to rent. As you probably know, we are looking in the area around where we hold our meetings since that is central to our membership, and we have found a couple of possible sites but nothing is tied down yet. We will keep everyone informed as we move forward.

Please, if you have encouraged us to take this chance on creating such a great benefit for our members, sign up as a member of the shop. The donations will allow us to start up debt free, but in order to pay the operating costs, we must have an adequate number of members paying the modest fee for access to the shop. Our operating costs should be at a minimum since it will be staffed by volunteers, but there will still be some period costs such as rent and utilities. I truly feel that this will take San Diego Fine Woodworkers Association to a new level; now those with an interest in doing woodworking will be able to fulfill that desire even if they don't have a shop. And, we will have some tools and equipment that virtually no home shop has, so it will benefit all our members, even those who already have a shop.

Ed Gladney pulled off another great Fall Seminar with Jeff Miller showing us how to build a chair in September. I enjoyed it and know that many of you did as well. I'm sure Ed would appreciate it if you would let him know of any suggestions you have for a speaker for next year or even subject matter that

would interest you. Now he gets to turn his attention back to Design In Wood.

The first weekend in November is active; first we have a shop tour on Saturday the 5<sup>th</sup> at the shop of Steve Zonce. Then on Sunday morning the 6<sup>th</sup>, we have the Old Tool Swap Meet in Rockler's parking lot—remember to get there early, it starts at 6 AM (but I always go later and they still have lots of good stuff). Speaking of Rockler, remember that they continue to host a training table before each of our general membership meetings; they start at 6 PM at a side table in the main meeting room and are done by 6:45 pm.

Enjoy Thanksgiving and come to our next meeting on the 30<sup>th</sup>.

~~~~~

2016 Design In Wood



Ed Gladney
Special Events Chairman



2017 Design In Wood

It is time to start working on your entries for the 2017 Design in Wood show. The theme has been selected and it is "How the West was Fun." So grab your cowboy hat and boots and prepare for a big wild west show. The fair dates are June 2nd through July 4th. Entry deadline is April 28, 2017 and delivery is May 25, 2017. The entry form will be posted on line about mid-February, 2017. No class changes this year. I expect no changes to the donated awards as well.

We start our fair planning meetings on the first Saturday of the month: January through May. Our first meeting will be Saturday, January 7, 2017. At our meetings, we start designing our theme display, go over any changes and set up

schedules for the coming year. If you would like to be involved, please email me and I will add your name to the email distribution list. It takes a lot of volunteers from several different guilds to make this show happen every year, so we could use your help. In addition to our many volunteers, we also have a paid staff that works starting at setup in May through teardown on July 7th. I expect that we will have some openings this year, as our very dedicated staff is getting older. If you are interested in working at the fair, please contact me as soon as possible. I will be sending out a notice of time and place of the first meeting later this year. It will also be posted on our web site at about the same time.

Any questions –please contact me.

Ed Gladney
gladney@san.rr.com
858-484-4366 Home
619-241-4410 Cell

~~~~~

## **Member Shop Project**



**Gary Anderson,**  
**Member Shop Chairman**

The year may be drawing to a close, but the activity around the Member Shop is accelerating

rapidly!

We've been authorized by the Board of Directors to find a site for the Shop. As of this writing, Pete Sterling, our "Real Estate Guy", is working hard at doing just that. He has found two excellent possibilities and negotiations have begun. One is in the Kearny Mesa area and another in the Scripps Ranch area. Both have easy freeway access. These negotiations are tricky and take time. It appears one may have fallen through. If you want a current update, keep your eye on our Facebook page for the latest news.

Both financial and tool donations continue to come in from some very generous and supportive Members. One very notable donation came from Dick Rosenberg, a long



term Member, who has been an integral part of our Toy Group for many years. Unfortunately, Dick's health has deteriorated to the point he decided to close his shop. Fortunately for us, he wanted the tools to go where they would do the most good. He donated his entire shop, including a near-new Saw Stop Table Saw, to our Member Shop Project! Our sincere thanks go out to Dick for his generosity!

We now have over 100 Members signed up as Shop Members. This is a good start, but not enough to keep us financially secure. If you have not yet signed up, I hope you'll reconsider and do so today. Just go to our website and choose either the Silver or Gold Level Membership. If you do so this month, you'll get a discount on the Initiation Fee. Remember, we can't do this without you! We need your support! I'm also pleased to tell you that we've filled several of the key positions on the Shop Management Team.

Rick Daley has agreed to become the Financial Director for the Shop. As a just-retired CPA, I believe he will bring a level of professionalism as well as the systems that will create the kind of transparency and accountability we all want to see. Tom Veatch has offered to take on the challenge of Internet Fundraising which we hope to rely on as an ongoing revenue stream.

Two positions remain open as of this writing. One is the Safety Director. This individual will have the responsibility of developing the Safety Training Program all Members will need to complete, to conduct periodic Training Sessions, and oversee the overall Safety issues in the Shop. The other position still open is that of Shop Foreman. This person will be the one to train and schedule the Shift Supervisors. He (or she) will have plenty of help from the other Members of the Management Team. But this is an important position and one I'm anxious to fill. So if you have any interest in either of these opportunities, please contact me.

Again, I welcome any questions, ideas or suggestions that you have. I want you to think of this as "your Shop"...because it is!

[pinz711@aol.com](mailto:pinz711@aol.com) 619-670-1181

~~~~~

2016 Seminar Report



Ed Gladney
Seminar Chairman

This year's seminar was given by Jeff Miller, who presented his methods for designing and building chairs. It was a very good presentation with a lot of pertinent information. Jeff has many years of experience building and designing furniture. He gave us an overview of his work and some of his philosophy on Friday evening. Over the next two days, Jeff walked us through the building of two types of chairs: a contemporary slat backed chair (not to be confused with the Appalachian slat back) and a Chippendale chair. Along the way, he gave us some insight on proper design and construction techniques; a good visual demonstration on mortise and tenon; measuring and marking angled mortise and tenon for the chair rails and stretchers.



Once again, we were well supported by Rockler with many door prizes and two routers for the special raffle. In addition to Rockler's contribution, we had several turnings from Tom Edwards included in the raffle. The special



raffle we hold each year during the seminar is in support of the TAV (Turn Around for Vets) program. This is a program started and maintained by volunteers from the San Diego Wood Turners (SDWT) Association. The TAV program works with several military groups that treat and care for wounded veterans. SDWT members volunteer their time to teach wood turning skills to wounded veterans. SDWT supplies all the lathes, tools and wood for the classes that are held two times a week at three different facilities around San Diego: Naval Medical Center hospital; Wounded Warrior Battalion; Camp Pendleton; and, the Veterans Affairs Care Center near Old Town. The program is designed to provide basic woodturning skills that will have therapeutic value to disabled veterans. The program provides instruction, materials, and safety equipment for veterans (and accompanying spouses) use at no cost. Project work includes learning to turn pens, turned boxes, and bowl type items.

Turn Around for Veterans was founded by retired Nurse Nan Bushley and orthopedic surgeon and former Navy Officer Dr. Kenneth Roth. Both understood how a devastating injury can create a feeling that life as previously known is over, and they believed that learning to turn wood would help these courageous servicemen to heal in ways beyond the physical. Each facility treats different types of medical disabilities and each has its own turning center with multiple mini-lathes and tools. It is a tremendous operation and one we are proud to support along with Rockler. The money raised at the seminar is



used by Rockler to supply pen kits and supplies for the program. 100% goes to the program. Rockler supplies the material at their cost.



This year we raised \$970 for the TAV program. Rockler sets up an account for the wood turners and

they buy the supplies through that account. In the picture, I am handing a check for \$970 to General Tom Lightner, SDWT TAV program director and Mike Durlak, San Diego store manager.

~~~~~



**November Raffle**  
**James Strawn,**  
**Raffle Program Chairman**

- 1.Fuller #8 counter sink set.
- 2.Veritas Gents Saw
- 3.Two Cherries chisel set 6 piece.
- 4.Lie-Nielsen #60 Rabbit Block plane w/nicker
- 5.Lie- Nielsen 1/2 mortise chisel

~~~~~

Toy Program
Roger Solheid, Toy Program Chairman

Since our last report the following toys have been completed in 2016:

| | | |
|-----|-------------|-------------------------|
| 52 | Ring Tosses | Jerry's Toy Shop |
| 53 | Bull Dozers | Jerry's Toy Shop |
| 20 | Cars | Paul Trebbien |
| 5 | Train Sets | George Byrne |
| 7 | Puzzles | Jerry's Toy Shop |
| 100 | Bracelets | Jerry's Toy Shop |
| 1 | Car | Bob Anthita & Ken Water |

Our toy production total for the period was 238 and 849 for 2016.

~~~~~

## Magazine Program



### **Mike Switalski, Magazine & Book Sales Chairman**

A big "Thank You" to the following SDFWA members for their magazine and book donations during the September 28, 2016 Membership Meeting: Doug Parker (3 boxes books & magazines); Mike Durlak (4 boxes assorted magazines); and, Don Spangler (2 bags VCR tapes, DVDs and magazines collected during last Tool Swap Meet). We also received a very generous donation of books from non-member Rod Wolfe, representing the Mount Miguel Covenant Village Woodshop. This extremely large collection of books will be available for purchase during the next membership meeting. Shop early while the selection is best!

We were unable to sell the hardcopy magazine sets that were available to SDFWA members, so arrangements were made to donate complete sets of Wood, Woodsmith, ShopNotes and Fine Woodworking to the Palomar CFT Library. Magazines were delivered to Palomar on October 10, 2016 and were a welcome addition to the CFT Library.

### **Magazine Sales Manager Opportunity**

Looking for an opportunity to contribute to the on-going success of the SDFWA? How about taking on the responsibility for magazine and book sales? After 3 very enjoyable years in my current position as Magazine Sales Manager, I will be stepping down effective 12/31/16. **We would like to identify a replacement candidate as soon as possible to insure that magazine sales continue during the January 2017 meeting.**

As Magazine Sales Manager, you are the first to review new magazine, book, CD, and DVD contributions. Primary responsibility includes the setup and tear down of the magazine tables at each of the membership meetings (7 meetings per year). All funds raised from magazine and book sales are used to fund on-

going SDFWA programs. This is a very visible position and provides an opportunity to interact with a large number of members during each of the meetings. If you are interested in knowing more about this opportunity, please feel free to discuss with me in more detail during the next meeting or contact one of the Board members to express your interest.

~~~~~

Pro Bono Report

Jim Vitale, Pro Bono Chairman

Jim received the following letter of gratitude from the TLC Preschool for items made by the toy makers of the SDFWA:

Dear Mr. Vitale, Thank you for your generous donation of handmade wooden toys. This was a wonderful surprise and the children will enjoy playing with them.

Warmly,
The TLC Preschool Staff:
Mrs. Gonzalez, Mrs. Marshall & Mrs. Valenzuela

Yvonne Valenzuela
Director
TLC Preschool
11240 Clairemont Mesa Blvd
San Diego, CA 92124
(858) 292-7446

~~~~~

## Outreach Committee Report

### **Mike McElhiney, Outreach Chairman**

Projects underway now include the table for Firehouse 9, two large library carts (5'x5'x30"), two smaller carts, and the preparation for the Steam Maker Faire in early December. Coming down the pike is a venue in Long Beach which is focused on the craft of the American Woodworker. Also, the 33' racing shell built in the early thirties for the Berlin Olympics is waiting for some TLC. If you have not read *The Boys in the Boat* yet, I suggest you put it on your reading list.



The firehouse table is done except for a finish coat or two of polyoil. The station folks are pleased with the 12'x4' Torrey pines table and the two benches. The Torrey pine trees fell on the fire station lot. I took the logs to Oceanside and had them milled into 2" boards. I let them dry for a month or so and then built a trestle table and two benches.

The library book store carts are a work in progress. I will most likely begin construction early next week. I have most of the material and have received a check from the library for the material last week. Help with construction would be very welcome.

Charlie Bierman is a toy genius. He has set me on a path to make a variety of toys that students from all over the county will be able to assemble and decorate. The idea here is to pass on some woodworking skills to the younger generation. Charlie has given me several plans that look workable for the laser. I can cut out parts from 1/4" plywood or 3/8" solid wood to make parts which may be assembled, decorated and go home with the enlightened student.

I am lucky that David Lighttower and Melia Gaia volunteered to help prepare and put on the venue. They have been to my shop several times and we all went to see Charlie's collection of toys.

The venue in Long Beach sounds interesting, but it is one that I will be unable to attend. I tried to call Mike Hou, but the number is way out of date and I did not try the Chinese number.

The racing shell was built by George Pocock. It has suffered some minor damage and I intend to repair it, use it here and then return it to the University of Washington. This project will incorporate the skills of local rowing teams who have shown some interest in the craft. In addition, I would like to get some PR for SDFWA.org. That would require that SDFWA members volunteer to help out.

Mike McElhiney 858-761-7020

~~~~~

Opportunity to show and sell your work: Borrego Art Institute

CRAFTED WORKS OF ART opens December 9 and runs through December 26. Crafters may submit work that is considered finely crafted and suitable for Christmas gift giving. Work is limited to three large pieces and up to 10 small pieces. Please send photos for consideration of your work. Work will be accepted in the gallery December 3 and 4, 10:30 am to 4:00 pm. There will be an entry fee of \$15 per artist if not a member of BAI. Members pay no entry fee.

To join the Borrego Art Institute, go to our website,

www.borregoartinstitute.org

~~~~~

## **Photos of Howard Boehm's shop:**

Photos by Lou Adzema





~~~~~



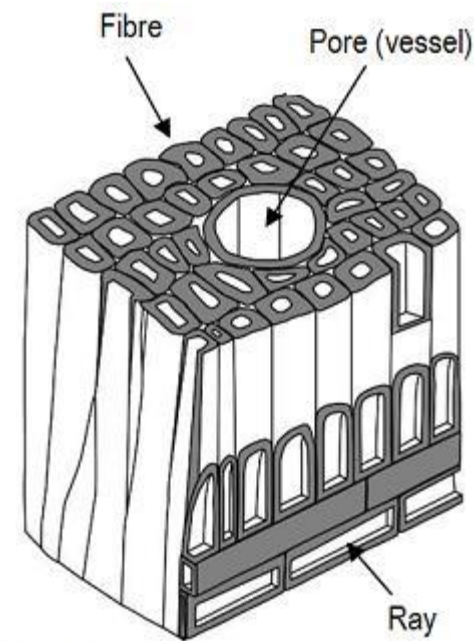
Article by Dick Ugoretz,
Member at Large

WOOD MOVEMENT

Many years ago, I made a nice table for my son and his family and shipped it to their home in New York. It was made in San Diego in mid-summer, without allowing for wood movement. Needless to say, the table did not survive the first winter of cool temperatures and indoor heating in New York which produced shrinkage, a large crack in the top, and a painful but valuable lesson for me.

Here is some information about how to predict wood movement and techniques to protect your work from the damage it can do. Wood shrinks and swells in response to changes in

its moisture content. The complex structure of wood consists of microscopic cells, solid fibers and hollow pores. The details vary greatly according to species, but a simplified picture looks like this.



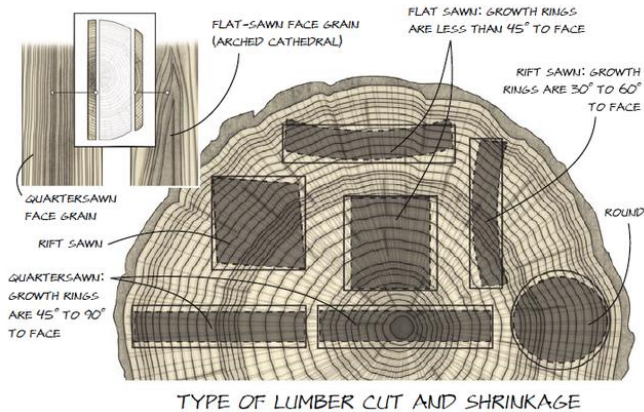
Palomar has a great article on wood structure at this Internet address: <http://waynesword.palomar.edu/trjuly99.htm>

When a tree is felled, the water held within the pores and cells ("free" water) and in the walls of these structures ("bound" water) can account for anywhere from a third to twice the weight of kiln dried lumber. After all the free water in pores and cells has evaporated, further drying results in shrinkage.

Moisture content of Kiln dried lumber is as low as 10%. Left to dry naturally in open air, wood eventually reaches equilibrium with its environment and, over time, will gain or lose about 1% of its moisture for every 5% change in relative humidity. *Relative* is important because the actual amount of moisture that air can hold depends on temperature - less in hot environments; more in cold ones.

All wood swells or shrinks and also changes shape as it gains or loses moisture. These changes vary by species and depend on how the lumber is cut. Longitudinal movement (parallel to the grain) is minimal and can usually be ignored. Radial movement across

the grain (tangent to growth rings) varies according to how the log was sliced; greatest in flatsawn lumber, least in quartersawn, intermediate in rift sawn. Shape changes also vary according to how the log was cut as shown in this diagram.



The direction of cupping can be predicted by looking at the grain pattern in the cut end of a plank. Cupping always occurs in a direction that tends to straighten the growth rings. Cupping, twisting, bowing, etc. are also most severe with flatsawn lumber; least in quartersawn; and, intermediate in riftsawn.

Here is a short list of common domestic species in order of lowest to highest change in size (average change of a 12" wide plank in inches) due to change in moisture content: Cherry 0.12; walnut and ash 0.13; poplar 0.14; birch 0.16; maple 0.17; oak (red & white) 0.18.

Many charts with values for more species and for calculating expected wood movement are available on the Internet. Most are too complicated for discussion here, but there is an excellent article in FWW #241, August, 2014 with a chart and explanation on how to do the calculation. For the chart on the right, multiply the number given by 10; then by the width of your plank in inches. If you prefer fractions, multiply the final number by 16 (or 32, etc.) to get an approximate change in 16ths of an inch.

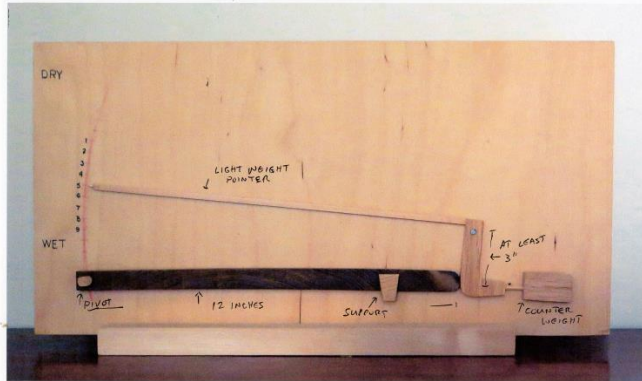
If you plan to calculate movement to be expected for specific changes in humidity, you will need a moisture meter. They come in two forms; pin or pinless. The pin variety allows

remote readings and can measure at some depth, but requires sticking two pins into the wood; not desirable for testing finished wood or in a lumber yard. Pinless meters require a smooth, flat surface and good contact for accuracy. If you are concerned about marring your wood, a pinless meter may be best. If you dry your own wood or use wood thicker than 2 inches, a pin meter is more appropriate.

Meters for woodworking range in price from \$15 at Harbor Freight to \$350 for a highly rated Ligno Mini ED meter, available at Rockler for \$119 and rated "Best Overall" in FWW #210, February 2010. An Electrophysics MT90, available on eBay for \$69, was rated "Best Value" in the same article. Another well reviewed choice is the Delmhorst J-Lite meter which retails for \$169. Higher priced meters come with temperature correction and/or species correction; very useful features.

| SPECIES | QUARTERSAWN | FLATSAWN |
|----------------------|-------------|----------|
| Alder (Red) | .0015 | .0026 |
| Ash (White) | .0017 | .0027 |
| Aspen (Quaking) | .0012 | .0023 |
| Basswood (American) | .0023 | .0033 |
| Beech (American) | .0019 | .0043 |
| Birch (Yellow) | .0026 | .0034 |
| Butternut | .0012 | .0022 |
| Cherry (Black) | .0013 | .0025 |
| Fir (Balsam) | .0001 | .0024 |
| Mahogany | .0017 | .0024 |
| Maple (Red) | .0014 | .0029 |
| Maple (Sugar) | .0017 | .0035 |
| Oak (Red) | .0016 | .0037 |
| Oak (White) | .0018 | .0037 |
| Pine (Eastern White) | .0007 | .0021 |
| Pine (Longleaf) | .0018 | .0026 |
| Pine (Ponderosa) | .0013 | .0022 |
| Pine (Sugar) | .0010 | .0019 |
| Poplar (Yellow) | .0016 | .0029 |
| Sweetgum | .0018 | .0037 |
| Sycamore (American) | .0017 | .0030 |
| Teak | .0010 | .0019 |
| Walnut (Black) | .0019 | .0027 |

Wood responds slowly to changes in the environment. You can get an indication of what has actually been happening to the wood in your project by watching a small strip of wood suspended so that it moves a pointer as it shrinks or expands. This gadget is one I made.



The climate where you work plays an important role in the amount of movement to expect; the more variation in temperature and especially humidity, the more wood will move.

Here are some facts about humidity in San Diego where relative humidity typically ranges over the course of the year between 42% and 87%; rarely going below 17%; sometimes as high as 100%. The most humid weather occurs between July 30 and August 30, when the average daily high has averaged between 64% and 87%. Our driest weather, in early December, averages relative humidity below 58% on three days out of four.

What practical steps can be taken to make practical use of this? First, be aware of the classic situations in which wood movement can cause trouble. They all have in common the need to join parts with opposite grain direction:

1. Frame and panel doors;
2. Breadboard ends;
3. Wide (over 3") mortise and tenon joints;
4. Solid wood table tops;
5. Web frames and drawers guided in a chest or cabinet;
6. Solid wood drawer bottoms;
- 7 Moldings and cornices.

Here are some suggestions gleaned from in two good FWW articles: #165, September 2003 and #255, July 2016.

1. Frame and panel - leave appropriate size gaps all around, glue only the center of the end grain edges of the panel and do not glue the long grain edges.
2. Breadboard ends - glue only the center of the joint and create appropriate size slots for the screws or pins at the ends.
3. Wide mortises - when over 3", only apply glue to the upper third of the mortise and leave a small gap at one end of the mortise.
4. Solid table tops - use one of several styles of metal screw fasteners which allow for movement or make "buttons" screwed into the top that connect with small slots in the aprons.
5. Web frames - mount the cross grain part of the frames in a dado and apply glue only to the front end and leave room in the back mortise.
6. Solid drawer bottoms - orient grain to run side to side, leave space for expansion under the drawer back and do not apply glue to the side edges of the bottom.
7. Moldings - attach to the sides; not the top; only glue one end and use light weight nails for the rest.

Now you are ready to produce work that should last many decades or longer.

Dick Ugoretz

~~~~~

# 2016 San Diego Fine Woodworkers Association

## DIRECTORS

|                  |               |              |                                                                        |
|------------------|---------------|--------------|------------------------------------------------------------------------|
| President:       | Bernie Burke  | 760-723-0972 | <a href="mailto:president@sdfwa.org">president@sdfwa.org</a>           |
| Vice-President:  | Dale Stauffer | 619-561-2202 | <a href="mailto:vice-president@sdfwa.org">vice-president@sdfwa.org</a> |
| Treasurer:       | Jeff Bratt    | 619-276-8641 | <a href="mailto:treasurer@sdfwa.org">treasurer@sdfwa.org</a>           |
| Secretary:       | Lou Adzima    | 858-349-2780 | <a href="mailto:secretary@sdfwa.org">secretary@sdfwa.org</a>           |
| Member at Large: | Dick Ugoretz  | 858-490-6295 | <a href="mailto:MemberAtLarge@sdfwa.org">MemberAtLarge@sdfwa.org</a>   |

## COMMITTEES

|                        |                     |              |                                                                              |
|------------------------|---------------------|--------------|------------------------------------------------------------------------------|
| Community Outreach     | Mike McElhiney      | 858-761-7020 | <a href="mailto:outreach@sdfwa.org">outreach@sdfwa.org</a>                   |
| Craftsman list:        | Ron Rossi           | 619-582-9883 | <a href="mailto:CraftsmanList@sdfwa.org">CraftsmanList@sdfwa.org</a>         |
| E-Mail List Manager:   | Harry Baldwin       | 858-278-8718 | <a href="mailto:EmailManager@sdfwa.org">EmailManager@sdfwa.org</a>           |
| Historian:             | Lou Adzima          | 619-922-0311 | <a href="mailto:ilovejamul@cox.net">ilovejamul@cox.net</a>                   |
| Magazine & book sales: | Mike Switalski      | 858-444-0085 | <a href="mailto:mikeswital@hotmail.com">mikeswital@hotmail.com</a>           |
| Membership:            | Bryan Blacksher (C) | 858-414-7233 | <a href="mailto:sdfwa.membership@gmail.com">sdfwa.membership@gmail.com</a>   |
|                        | Mike Davis          | 858-486-1014 | <a href="mailto:sdfwa.membership@gmail.com">sdfwa.membership@gmail.com</a>   |
| Membership Greeter:    | Kevin Deal          | 951-565-6848 | <a href="mailto:kevind1956@sbcglobal.net">kevind1956@sbcglobal.net</a>       |
| Member Shop Project    | Gary Anderson (C)   | 619-670-1181 | <a href="mailto:pinz711@aol.com">pinz711@aol.com</a>                         |
|                        | Pete Sterling       | 858-484-6696 | <a href="mailto:psterli1@aol.com">psterli1@aol.com</a>                       |
|                        | Jeff Bratt          | 619-276-8641 | <a href="mailto:jeffsd@san.rr.com">jeffsd@san.rr.com</a>                     |
| Mentor Program:        | Bob Stevenson       | 619-422-7338 | <a href="mailto:MentorProgram@sdfwa.org">MentorProgram@sdfwa.org</a>         |
| Merchandise:           | Matt Evans          | 858-366-5499 | <a href="mailto:mattsurfs20@gmail.com">mattsurfs20@gmail.com</a>             |
| Newsletter:            | Adrian Larson       | 858-672-1808 | <a href="mailto:newsletter@sdfwa.org">newsletter@sdfwa.org</a>               |
| Pro Bono:              | Jim Vitale          | 858-623-8630 | <a href="mailto:jamespvitale@yahoo.com">jamespvitale@yahoo.com</a>           |
| Programs:              | Del Cover           | 858-270-7739 | <a href="mailto:del@delcoverwoodworking.com">del@delcoverwoodworking.com</a> |
| Property:              | Dale Stauffer       | 619-561-2202 | <a href="mailto:ddstauffer@cox.net">ddstauffer@cox.net</a>                   |
| Publicity:             | Clare Pister (C)    | 434-989-2357 | <a href="mailto:publicity@sdfwa.org">publicity@sdfwa.org</a>                 |
|                        | Jeanne Skinner      | 619-561-1655 | <a href="mailto:jskinner11687@yahoo.com">jskinner11687@yahoo.com</a>         |
| Refreshments:          | Don Spangler (C)    | 858-270-6165 | <a href="mailto:coffeeorganic@hotmail.com">coffeeorganic@hotmail.com</a>     |
|                        | Ron Rossi           | 619-582-9983 | <a href="mailto:ronrossi@cox.com">ronrossi@cox.com</a>                       |
|                        | Carl Drake          | 619-446-7532 | <a href="mailto:carl.drake03@gmail.com">carl.drake03@gmail.com</a>           |
|                        | George Latucca      | 858-337-7862 | <a href="mailto:glatucca@san.rr.com">glatucca@san.rr.com</a>                 |
| Resources/Raffle:      | Jim Strawn          | 619-887-8090 | <a href="mailto:jlstrawn@cox.net">jlstrawn@cox.net</a>                       |
| Scholarships:          | Jim Strawn          | 619-887-8090 | <a href="mailto:jlstrawn@cox.net">jlstrawn@cox.net</a>                       |
| Shop Tours:            | Dale Stauffer       | 619-561-2202 | <a href="mailto:ddstauffer@cox.net">ddstauffer@cox.net</a>                   |
| Shows & Exhibits:      | Ed Gladney          | 858-484-4366 | <a href="mailto:DesignInWood@sdfwa.org">DesignInWood@sdfwa.org</a>           |
| Sound Technician:      | Tony Tait           | 619-723-4513 | <a href="mailto:ttait1@gmail.com">ttait1@gmail.com</a>                       |
| Special Events:        | Ed Gladney          | 858-484-4366 | <a href="mailto:gladney@san.rr.com">gladney@san.rr.com</a>                   |
| Swap Meet:             | Don Spangler        | 858-270-6165 | <a href="mailto:coffeeorganic@hotmail.com">coffeeorganic@hotmail.com</a>     |
| Toy Program:           | Roger Solheid (C)   | 858-279-1140 | <a href="mailto:rsolheid@sbcglobal.net">rsolheid@sbcglobal.net</a>           |
|                        | Charlie Bierman     | 619-276-0048 |                                                                              |
|                        | Terry Stolzoff      | 619-869-1224 | <a href="mailto:woodycut@gmail.com">woodycut@gmail.com</a>                   |
| Video Library:         | Bob Reese           | 858-695-2460 | <a href="mailto:rreese@gmail.com">rreese@gmail.com</a>                       |
| Video Technician:      | Michael Fairbanks   | 619-465-4972 | <a href="mailto:mkfairdpmm@netscape.net">mkfairdpmm@netscape.net</a>         |
| Wants and Disposals:   | Dave Barnhart       | 760-721-1457 | <a href="mailto:WantsAndDisposals@sdfwa.org">WantsAndDisposals@sdfwa.org</a> |
| Web Site:              | Jeff Bratt (C)      | 619-276-8641 | <a href="mailto:webmaster@sdfwa.org">webmaster@sdfwa.org</a>                 |
|                        | Doug Murphy         | 619-441-9665 | <a href="mailto:dw-murphy@cox.net">dw-murphy@cox.net</a>                     |



### General Membership Meetings

**Wednesday:**

November 30

### SDFWA Mailing Address

P.O. Box 82323

San Diego, CA 92138-2323

## Wants:

**Need Source of custom Bandsaw blades 142" long. Paul Appelquist (619) 396-3090**

## Disposals:

- **Delta Model 23-725 Bench Grinder** ¾ hp motor, 120v, 1725 rpm, two 1"x8" wheels, water tray and utility light. **\$250**,  
**Larry Sherman** [beboplar@yahoo.com](mailto:beboplar@yahoo.com)  
**858-692-2963**
- **Delta 10" contractor's table saw Model 34-444**, Delta tenoning jig model 34-182, mobile base, 8" dado blade set, Vermont American molding head, 33" fence, 40"x27' TABLE, (20"x27" CAST IRON CENTER SECTION), FULLY ASSEMBLED MEASURES 48"W x 40"D x 42"H, base 24"H, saw 14"H. Easy to disassemble, two people needed to move table saw due to size and weight. **\$200 OBO**.  
**Dave Johnson** **858-535-9920 ext. 262**  
[Johnson@achatespower.com](mailto:Johnson@achatespower.com)
- **Free Restoration Project; 1939 World's Fair souvenir box.** Hoping to find someone to fix it properly then sell it for a charity or keep it.  
**Kim Laru** [klaru@cox.net](mailto:klaru@cox.net)
- **Free poplar logs: four green logs**  
**David Brin** [david.brin@gmail.com](mailto:david.brin@gmail.com)
- **Various types of leather, including broad straps, leather cord, and small pieces**  
**\$35** two grocery bags full of leather  
When you buy with a friend, we can reduce the price to **\$25** per person  
**Fernando Pinon** [director@arthouseynite.com](mailto:director@arthouseynite.com)  
(210) 279-0428 [www.arthouseunited.com](http://www.arthouseunited.com)  
765 Agate St., San Diego, CA 92109

### Board Meetings

**Wednesday:**

November 2

### SDFWA Web Page Address

<http://www.sdfwa.org>

- **HTC Table saw guard and dust collector**  
asking **\$30**  
**Terry Stolzoff** (619) 869-1347  
[woodycut@gmail.com](mailto:woodycut@gmail.com)
- **Incra table saw fence system**  
It is the TS-LS 32" system  
Asking **\$350 obo**  
**Howard Springsteen** [hspringsteen@gmail.com](mailto:hspringsteen@gmail.com)
- **Powermatic Scrollsaw \$300**  
**Mike Zukovich** (619) 992-5066  
[mikezukovich@icloud.com](mailto:mikezukovich@icloud.com)
- **Craftsman Jointer 6-1/8" Model 113.20650 \$125.00**  
**Dennis Kehoe** (760) 802-8418  
[denniswkehoe2003@yahoo.com](mailto:denniswkehoe2003@yahoo.com)
- **Large collection of Fine Home Building and Fine Homebuilding Magazines**,  
Continuous from 1982 to present, and some issues from 1980 & 1981, **50 cents per copy OBO for whole collection.**
- **Geetech floor standing hollow chisel mortising machine**, low use and accurate, includes set of chisels **\$400 OBO**
- **Dayton brand industrial dust collectors**, both 2 stage 220 volt., one 1 hp/24" dia., one 1/3 hp/18" dia. Work great **\$150 OBO** for the pair  
**Glen Carlson** [GlenPaulCarlson@cox.net](mailto:GlenPaulCarlson@cox.net)  
619-318-2496
- **Powermatic PM 719A Mortiser** with: HTC universal base, Jet mortising chisels size 2 and 1/4", 3/8", 1/2", 5/8"; Clico Mortising Chisel 1/4"; All collars

and parts with original purchase, excellent condition, used for only 3-4 projects. Asking price **\$750**

(858) 822-8471 [darkin@san.rr.com](mailto:darkin@san.rr.com)

- **Shop Stand Trolleys**, very sturdy with heavy duty wheels. Base size: 52" x 37" Height: 51"x 72" Eight available at **\$45 each**.

**Gavin Dawson** (760) 685-2994

[gavin1372@gmail.com](mailto:gavin1372@gmail.com)

- **Multiple Items:**

Most items are new. A couple items were used once for a particular project.

**\$4375 for the whole lot**

**Rockwell Delta 46-450 wood lathe**

serial # FH-2685 **\$1500**

**Rare Rockwell Delta wood lathe cast iron tool stand #DDL181 \$199.00**

**Rockwell Delta Lathe steady rest**

**\$100.00**

**RD Gap filler block \$149.00**

**Rockwell Delta screw center with No. 2 MT**

**\$29.00**

**Rockwell Delta lathe center \$11.00**

**Craftsman Spur Center No. 2 M.T. 9 21072**

**\$30.00**

**Rockwell Delta 6" tool rest \$53.00**

**Rockwell Delta 24" tool support with 2 posts**

**\$129.00**

**Spinning Tool Rest and fulcrum \$95.00**

**Craftsman Ball Bearing 60' Center No. 2 M.T, 9**

**21132 \$34.00**

**Rockwell Delta Banjo stock wrench \$29.00**

**Rockwell Delta 46-950 3 JAW 4" Leather Chuck**

**with two jaw sets \$68.00**

**Rockwell Delta 46-490 Spinning Center**

**with Interchangeable Centers 60', Cup, and Flat**

**\$57.00**

**Rockwell Delta CWL=43 LATHE offset tool rest holder extension \$49.00**

**Jacobs Geared 1/2" drill chuck \$45.00**

**3" face plate \$20; 6" face plate \$39; 9" face plate \$46**

**No. of Rd Metal Spinning Tools set of 5**

**never used \$375.00**

**Rockwell Delta Cup Center 2 MT replaceable tip morse taper \$14.00**

**Rockwell Delta Spur Center 4 spurs \$16.00**

**Rockwell Delta Wood Lathe metal turning compound slide rest \$250.00**

**Getting the Most Out of your Lathe wood/metal turning book \$19.00**

**Set of 4 Carbide Wood Turning Chisels**

**never used \$200.00**

**Rockwell Delta Spur Center Drive \$29.00**

**Set of 10 HSS Wood turning chisels**

**never used \$318.00**

**Rockwell Delta 46-480 Wood Turning Duplicator \$200.00**

**Rockwell Delta Right Angle 6" tool support**

**\$39.00**

**Rockwell Delta #46-111 straight 12" tool rest**

**\$34.00**

**Two Rockwell Delta DDL594**

**tool rest holders AKA Banjo \$99.95 each**

**Charles Anacker [charles@anacker.fr](mailto:charles@anacker.fr)**

- **Used Motors/Blowers**

Many used AC motors 1/3 and 1/2 hp and squirrel cage motors, all work

**Motor \$35 Blower \$45**

**Ronald Fay** (760) 788-6745 [rfay1961@yahoo.com](mailto:rfay1961@yahoo.com)

- **1983 Grizzly Long Bed Jointer 1 1/2 hp motor**  
**Weight 450 lbs. runs good \$350**

**1936 Craftsman Bench Lathe** 9" swing, 44" bed with wood and metal working accessories **\$150**  
(858) 922-6848 [rbeuligmann@icloud.com](mailto:rbeuligmann@icloud.com)

- **Craftsman 4 1/8" Jointer-Planer**  
Really old **\$25**

**Vermont American Drill Press** for use with hand held drill **\$10**  
(619) 988-4551 [rita.hanscom@gmail.com](mailto:rita.hanscom@gmail.com)

- **Laguna Tools horizontal mortiser** (requires router) **\$275**

**Delta benchtop 12" disc sander**, model 31-120  
Adjustable table, 1hp motor **\$150**

**Rigid wet/dry shopvac**, 8 gal capacity, Model WDO. **\$85**

**Porter Cable pancake air compressor**, 6 gal capacity. **\$85**  
**Richard Fink** [rmfwoodman@gmail.com](mailto:rmfwoodman@gmail.com)

- **Record CL3 Wood Lathe and accessories**  
48" Bed, swiveling head for large turnings, 3 steady rests, 2 spur centers, cup center, ball bearing center, 1/2" drill chuck, 4 face plates, owners manual, shop made stand with sand weighted legs **\$400**  
**Doug Murphy** (619) 994-0869  
[dw-murphy@cox.net](mailto:dw-murphy@cox.net)

- **Grizzly Router Table**  
cast iron with sliding table Model Number GO528  
No router, no rust, good shape **\$150**  
**Call David** (858) 273-3701  
[david@davidmarrdesigns.com](mailto:david@davidmarrdesigns.com)

- **Safety Speed Cut panel saw \$1000**

**Jet Shaper 3hp, JWS 25CS \$1000**  
**Ron Hanson** [hanson.house@cox.net](mailto:hanson.house@cox.net)  
760-743-6500

- **3/8" bender board**, Luan, 8' piece: 5' of board is 32" wide, 3' of board is 30" wide.

**Delta Shopmaster Miter Saw** 10" blade **\$25**

**Pony Clamps** 3 sets, **\$15 per set or \$35 for all 3 sets**

**Rockwel Portaplane 126 \$120**

**Porter Cable Tiger Saw \$55**

**Delta Hollow chisel Mortiser** model 14-650 **\$250**

**Small Drill Press \$40**

**Bosch 7.25" circular saw**

**Craftsman 10" radial arm saw \$75 obo**  
**Chris Guelich** [chrisguelich@gmail.com](mailto:chrisguelich@gmail.com)  
619-307-1896

- **Shop Closing: Delta no. 37-207** vintage 6" jointer, good shape, bed rust free **\$250**

**\$Jet air filter**, extra filter, 3 speed, rempte **\$255**

**Jet jointer**, little used, extra set new blades **\$375**

**Delta 18" scroll saw**, many extra blades **\$225**

**Shop roller stands, pair \$20**  
[Rolly.estevista@gmail.com](mailto:Rolly.estevista@gmail.com) 760-436-1066

- **Estate Sale: Dowling jig, Vice, 1/2 Sheet finishing sander, Bench grinder, 1/2 hp Craftsman jointer, AMT ballers, Mortising chisel sharpener, Skill 6.5" circular saw, Hinge guide system, Porter Cable palm sander, Porter Cable router, Milwaukee sawzall**  
**Make offers**  
**Jay Foster** [jayfoster@roadrunner.com](mailto:jayfoster@roadrunner.com)

**Updated List and Photos available on website**  
Please check the website at [www.sdfwa.org](http://www.sdfwa.org) or <http://www.sdfwa.org/wants-and-disposals/>



## Sponsors

To receive your discounts, please show your membership card before you make a purchase

### **Apollo Sprayers International, Inc.**

Email: [www.HVLP.com](http://www.HVLP.com) [www.](http://www.)

1040 Joshua Way  
Vista, CA 92081  
888-900-HVLP (4857)

Established in 1966, Apollo Sprayers International, Inc. manufacturer a complete range of High Volume Low Pressure (HVLP) spray finishing equipment for the professional woodworker and home hobbyist.

We are a small family owned business, owned and operated in Vista since 1989. We pride ourselves in producing high quality turbo spray systems and spray guns that we support with the highest possible level of customer service.

We also carry a complete line of finishing supplies through our virtual store located on the web at [www.TheFinishingStore.com](http://www.TheFinishingStore.com). Come by and read tips from expert finishers, subscribe to our monthly newsletter and peruse over 400 products all designed around making finishing easy.

### **Bayside Paint, Inc.**

[www.baysidepaint.com](http://www.baysidepaint.com)

Email: [info@baysidepaint.com](mailto:info@baysidepaint.com)

1228 Knoxville St., San Diego, CA 92120  
Phone (619) 275-7800  
Hours: 6:30 – 5:30 M-F, 8 -5 Saturdays  
**Robert Lewis, Manager**

Mohawk Finishing Products and many other stains, sealers, fillers and tools. Free delivery with minimum order and UPS shipping available.  
10% discount to SDFWA members

### **DeWalt, Porter Cable, Delta Factory Service Center**

7290 Clairemont Mesa Blvd., San Diego, CA 92111  
Phone: (858) 279-2012  
Hours: 7:30-4:30 M-F  
**Dave Stelmachowski, Manager**

Porter Cable, DeWalt, Devilbiss, Black + Decker, Stanley, Bostitch, FLEX, and Oldham  
Parts, Accessories, Repairs  
Special consideration to SDFWA members

### **Environmental Spray Systems**

[www.espraysystems.com](http://www.espraysystems.com)

Email: [service@espraysystems.com](mailto:service@espraysystems.com)

7114 Convoy Ct. San Diego, CA 92111  
Phone: (858) 279-7114  
Hours: 8:00-5:30 M-F  
**Sam Rinaker, Owner**

Specializing in spray finishing equipment. Local distributor for Devilbiss, Graco, Paasche, Gema, and Anest Iwata products  
10% discount to SDFWA members.

### **Fas-N-Go**

2260 Main St. Suite 15, Chula Vista, CA  
Phone: (619) 424-4774  
Hours: 7:30-5:00 M-F

Nail guns, brads, staples, nails, plus accessories for nail guns and repair service. Distributor for 3M, Senco, Haubold, Josef Kihlberg, Spotnail, Hitachi, Bostich and Paslode.  
10% discount on sales and service to members.

### **Frost Hardwood Lumber Company**

[www.frosthardwood.com](http://www.frosthardwood.com)

"Everything in Hardwoods since 1911"

6565 Miramar Rd. San Diego, CA 92121  
Phone [\(858\) 455-9060](tel:858-455-9060) Fax [\(858\) 455-0455](tel:858-455-0455)  
Hours: 7:00-4:30 M-F, 8:00-12:30 Sat  
**Jim Frost**

With over a century in business, Frost Hardwood is dedicated to providing quality wood and related products to the woodworking industry. Our facility includes; full service custom milling, panel press and warehouse. Domestic and Import Hardwoods, Plywood's hardwood/softwood, Butcher Block, Veneers, MDF, MDO, Molding, Melamine TFM, Laminate HPL, Flooring custom/engineered, Tools, and Adhesives. The Frosts (G.T., Jim and Byram), along with their team, are here to help with all your wood working needs. Special SDFWAdiscount.

**TH&H The Hardwood and Hardware Company**

The Woodworkers one Stop for Material and Supplies  
[www.th-h.com](http://www.th-h.com)

8849 Complex Dr. San Diego, CA 92123  
Phone: (858) 536-1800 Fax: (858) 614-1811  
Hours: 7:00-5:00 M-F, 9:00-4:00 Sat.

**Tom Drinnon, Manager**

Hardwood lumber, Moldings, Veneers, Cabinet  
Hardware, Finishes, Hand Tools and Supplies.  
Contractor discount to members.

**TH&H** goes out of their way for SDFWA! They  
open their doors and stay late for our board meetings.  
Thanks **TH&H!**

**Tropical Exotic Hardwoods**

[www.tehwoods.com](http://www.tehwoods.com)

2270 C Camino Vida Roble, Carlsbad, CA 92011  
Phoe: (760) 268-1080

#1 Source for wood, slabs, exotic and reclaimed lumber,  
turning stock, and more! 10% discount to SDFWA

**Lane Stanton Vance Lumber**

360 Vernon Way, El Cajon, CA 92020  
Phone: (619) 442-0821  
Hours: 7:00-3:00 M-F

The company carries domestic and imported hardwoods,  
molding and panel products for cabinet makers, furniture  
makers and contractors. Contractor discount to  
members.

**Mission Molding & Wood Specialties**

[www.missionmoulding.com](http://www.missionmoulding.com)

9510 Chesapeake Dr. # 401. San Diego, CA 92123  
Phone: (858) 569-8591  
Hours: 7:30-5:00 M-F, 8:00-1:00 Sat.

**Bob Hawk, Manager**

The sign inside Mission Molding's door says, "We have  
one of the largest selections of architectural and  
decorative moldings in Southern California." Select from  
more than 300 patterns in a variety of woods as well as  
polystyrene, fiberglass and primed plastic. The staff of  
Mission Molding can also supply you with mantels,  
handrails, balusters, columns and more.  
Depending on the item, members will get a 5% to 10%  
discount.

**Packaging Store**

[www.gopackagingstore.com](http://www.gopackagingstore.com)

7848 Silverton, Suite A, San Diego, CA 92128  
Phone (858) 549-7274  
Hours: 9:00-5:00 M-F

**Peter Wharf, Manager**

Custom boxes, crating, packaging supplies and  
shipping. Phone estimates and pick up service available.  
10% discount to SDFWA members

**R. S. Hughes Co. Inc.**

[www.rshughes.com](http://www.rshughes.com)

2575 Pioneer, Ste.102, Vista, CA 92081-8309  
Phone: (760) 579-0222  
Hours: 7:45-5:00 M-F

**Kurtis Lakhani, Manager**

San Diego's largest inventory of 3M abrasives,  
adhesives, safety equipment and more. Phone  
orders/estimates. UPS shipping or walk in service  
available. 10% discount to members.

**Rockler Woodworking and Hardware**

[www.rockler.com](http://www.rockler.com)

8199 Clairemont Mesa Blvd. San Diego, CA 92111  
Phone: (858) 268-1005  
Hours: 9:00-6:00 M-F, 9:00-5:00 Sat., 11:00-4:00 Sun.

**Mike Durlak, Manager**

Rockler is an excellent source for hard to find hardware  
and accessories. Manager Mike Durlak and his staff can  
help you with good selection of hardware, exotic  
hardwoods, veneers, inlays, specialty moldings, fine  
woodworking hand tools, an impressive array of finishing  
materials, a great selection of books and plans, and  
weekly workshops in many disciplines. Visit this great  
woodworking source next time you need that special  
item no one else seems to have. Catalogues are  
available. 10% discount on general purchases (except  
power tools).

**Russ Filbeck, Master Chair Maker**

[www.russfilbeck.com](http://www.russfilbeck.com)

E-mail: [rcfilbeck@aol.com](mailto:rcfilbeck@aol.com)

Make your own heirloom quality chair.

Chair styles include Appalachian Ladder Back and  
Windsor chairs. All materials, tools and instruction  
provided. Class size is limited to two students.  
Use the web site, e-mail or call Russ to schedule your  
class.

10% discount for SDFWA members on the Two-Slat  
Ladder Back or Sack Back Windsor chair class.

**Shellac Finishes**

[www.shellacfinishes.biz](http://www.shellacfinishes.biz)

Email [sales@shellacfinishes.biz](mailto:sales@shellacfinishes.biz)

**Vijay Velji, Proprietor**

Internet only. Shipped USPS

De-Waxed Shellac Flakes for classical woodworkers at very competitive prices.

SDFWA members must enter coupon code 1010 during checkout to receive a 10% discount

**Signature Medallions**

<http://signaturemedallions.com/>

Phone: (619) 303-2876

Feel free to call with questions

Email [pinz711@aol.com](mailto:pinz711@aol.com)

**Gary Anderson, Proprietor**

The Signature Medallions (a division of the company that does SDFWA membership pins) come in any size, shape, finish, or color. They are a very professional way to "sign" your work. SDFWA members get a 20% discount; Board members and Committee Chairs 40%. Gary will draw up a design for free, no obligation.

**San Marcos Hardwood Lumber Co**

[www.SanMarcosLumber.com](http://www.SanMarcosLumber.com)

1415 Descanso Ave, San Marcos, CA 92069

Phone (760) 471-7777

Hours: Mon – Fri 6 AM to 4:30 PM, Saturday 8 AM - Noon

**Don Widders, Manager**

San Marcos Hardwood Lumber Co stocks a large selection of Domestic and Exotic Hardwood Lumber, Hardwood Plywood, Veneers, Live Edge Urban Lumber and Slabs, High-Pressure Laminates, Cabinet Hardware, Drawer Slides, Hinges, Saw Blades, Router Bits, Glues, and just about everything fine woodworkers and the furniture and cabinet industry require. Will-call and/or same day delivery available. Special orders are welcome. Don and his knowledgeable staff can help you choose the right material for your next project. Contractor discount to SDFWA members.

**Strata Forest Products**

[www.strataforest.com](http://www.strataforest.com)

165 Denny Way, El Cajon, CA 92020

Phone: (619) 449-9663

Hours: 7:00-4:00 Mon.-Sat.

**Bob Evans & Jack Griede Proprietors**

Strata Forest Products is a diversified company specializing in hardwood lumber, panel products and moldings. With years of experience, we have been serving design firms, architects, cabinet shops and the furniture industry in all their hardwood needs. From our wide range of hardwood species, to our custom knife

grinding facilities, we have both the skills and tools to turn unique designs into reality.

Contractor discount to SDFWA members.

**Tropical Exotic Hardwoods of Latin America**

[www.anexotichardwood.com](http://www.anexotichardwood.com)

2270 Camino Vida Roble, Suite "B", Carlsbad, Ca. 92011

Phone: (760) 434-3030, Fax: (760) 434-5423

Hours: 8:30-4:30 M-F, 9:30-1:00 Sat.

**Mitch Talcove, Owner/ Manager**

Specializing in a wide selection, varieties, sizes, and shapes of Exotic Hardwoods from Latin America. 10% off all purchases with valid SDFWA card (cash or check preferred if SDFWA is being applied).

**Toolmart, Inc.**

[www.toolmarts.com](http://www.toolmarts.com)

2750 Auto Park Way #13, Escondido, CA 92029

1.800-735-8665 , (760) 480-1444 (Direct),

(760) 747-2626 (Fax) [purchasing@toolmarts.com](mailto:purchasing@toolmarts.com)

**Eric House, General Manager**

Discount tool store and authorized repair center.

Contractor discount to members.

**Vac-U-Clamp**

[www.vac-u-clamp.com](http://www.vac-u-clamp.com)

Email: [barney@vac-u-clamp.com](mailto:barney@vac-u-clamp.com)

4149 Avenida de la Plata, Oceanside, CA 92056

Toll-free Phone (888) 342-8262, Fax: (888) 357-4244

**Barney Rigney, Owner**

Vac-U-Clamp is the leader in vacuum forming and vacuum laminating technologies. We have a full line of vacuum presses, pumps, materials, and adhesives. Vac-U-Clamp is your single source for all vacuum forming and vacuum laminating products. 10% discount to SDFWA members.

**Woodworker West**

[www.woodwest.com](http://www.woodwest.com)

P.O. Box 452058, Los Angeles, CA 90045

Phone: (310) 216-9265 Fax: (310) 216-9274

E-mail: [editor@woodwest.com](mailto:editor@woodwest.com)

**Ron Goldman, publisher**

Published bi-monthly to promote craftsmanship in woodworking throughout the western U.S. Discount subscription rate to SDFWA members. \$10 for one year and \$18 for two year. When applying, after your name add SDFWA member and your member number.

Please check the website for updates:

[www.sdfwa.org](http://www.sdfwa.org)





**Non-Profit Org.  
U.S. Postage Paid  
Permit 697  
San Diego, CA**

**ADDRESS SERVICE REQUESTED**

**Next meeting: 7 pm, Wednesday, November 30<sup>th</sup>, 2016 at the Al Bahr Temple**

