

# San Diego Fine Woodworkers Association

Volume 35

## Newsletter March, 2016

Issue 2

Our 35<sup>th</sup> Year of bringing Woodworkers together

The Next Meeting is 7 pm, Wednesday, March 30<sup>th</sup> at the Al Bahr Temple,

5440 Kearny Mesa Rd., (behind the Hampton Inn)

### March Program



**Dell Cover,  
Program Chairman**

Russ Filbeck is our speaker for the March meeting. He will give a slide presentation of former President Jimmy Carter's woodworking portfolio. After leaving the White House, creating the Carter Center, and his Presidential Library in Atlanta, President Carter still found time in his very busy schedule to begin a prolific woodworking avocation in his home shop. Carter's Presidential staff planned to buy him a jeep as a parting gift; however, since the Secret Service does his driving anyway, he suggested that they give him some woodworking machines and tools instead. Thus, his home shop was outfitted with Sears Craftsman tools and machines. He has added a few additional pieces of equipment and tools over the years, but those Craftsman tools are still working today. He still builds pieces for his family and for his annual fundraising auction to support the Carter Center. In June 2015, Russ helped Carter build a set of dining chairs for the upcoming June 2016 auction.

Russ is a former President of the San Diego Fine Woodworker's Association (1988-89) and retired Professor of woodworking at Palomar College. He is also the author of "Making Ladder Back Chairs with Russ Filbeck." President Carter wrote the foreword for Russ's book, and also wrote a page in the book describing how he himself makes ladder back chairs.

Russ will have signed, specially discounted copies of his book at the meeting for anyone wishing to purchase one. The book sells for \$85 plus tax. The

special price at the meeting is \$60 cash or \$70 credit card.

This promises to be an incredible program,  
**Hope to see you there, Dell Cover**



### April 23<sup>rd</sup> Gamble House/Mission Inn Bus Tour



**Dale Stauffer,  
Shop Tours Chairman**

SDFWA will be hosting a spring bus trip for members, visiting the impressive [Gamble House](#) in Pasadena and the historic [Mission Inn](#) in Riverside.

The Gamble House is an outstanding example of custom woodworking at its finest. The house and all its furnishings were designed by architects Charles and Henry Greene in 1908 for David and Mary Gamble of the Proctor & Gamble Company. It was designated a National Historic Landmark in 1978, and is considered a premier example of American Arts and Crafts style.

Dating from the same time period, the Mission Inn is an eclectic composite of Mission Revival, Spanish, and Moorish styles. Original construction started in 1903; eventually, the building and grounds grew to encompass an entire city block. It has a storied history (some say it's haunted), and is

currently an award-winning hotel and spa. The docent-led tours describe the architecture and history of the building, and include places that are not normally open to the public. This building is also a National Historic Landmark.

There will be two buses leaving San Diego between 7:00 and 7:40am: one from Westfield North County (Escondido) and one from Mission Valley. These are tour buses with bathrooms. The departure times are staggered to coincide with the morning Gamble House tours. Following, we will have lunch at a nearby Souplantation; then, on to the afternoon tours at the Mission Inn. We should be returning to San Diego around 5 pm. Additional information - including detailed departure instructions - will be provided after you are signed up for the tour.

The cost for this tour will be \$65 per person - this includes both morning and afternoon tours, and lunch. You will need to register in advance using the on-line sign-up below, or by contacting Dale Stauffer by email at [ddstauffer77@gmail.com](mailto:ddstauffer77@gmail.com), or telephone at (619) 840-5684. Please indicate how many people are going in your group and which location you will depart from. We need to get an accurate count of who wants to go. Register early - in the past these tours have all sold out quickly, and there are only 100 seats available. Payment will be due at the end of March - either at the SDFWA general meeting or on-line (link below).

For online registration, click on the link:  
[Members - Tour Registration](#)



You may contact Dale at [ddstauffer77@gmail.com](mailto:ddstauffer77@gmail.com) , if you wish to have your shop on the tour list.

~~~~~  
**Notice:**

The **Old Tool Swap meet** will be held April 3, 2016

**Time:** 6:00 am until noon (get there early)

**Place:** Rockler Woodworking store – parking lot  
8199 Clairemont Mesa Blvd. ([near 163 freeway](#))

## President's Message

### March, 2016



**Bernie Burke,**  
**President SDFWA**

As I approach the newsletter this month, I find myself hoping that everyone is healthy and doesn't come down with whatever I had; although I understand it's pretty popular. It's hard to believe that it is March already. Is the ski season really about over and are the desert flowers really that colorful?

We have another great shop tour on March 12 at the shop of Brett Hesser from 9 to noon. Like many of you, I was in his previous shop and look forward to seeing the new one with his fabulous collection of veneers. But that's not all folks; on April 23 many of us will be boarding busses to go to Pasadena for a tour of the Gamble House followed by lunch and a tour of the Mission Inn in Riverside on the way home. This should be really special and Dale Stauffer's efforts to get these tours organized are appreciated; just look these up on our website under Activities to get the details. It's been a couple of years since we had a similar tour, so I expect this one to be popular. We recommend that those interested in the bus trip sign up early as there is a definite limit on the number of available seats. For those of us in North County, there is even a separate bus which should make it easier to catch early in the morning.

Gary Anderson and his committee had many of us on the edge of our seats at the January general meeting discussing the plans for the Member Shop. It really is starting to look possible, although that is based on faith that we can run a successful fundraising campaign. Please be thinking of how you can help. From our surveys and interactions with members, it seems that a great number of our members really support this plan; now it's time to evidence our financial support. Although opening the shop will be expensive, we feel it is entirely attainable to a group as large and diverse as is SDFWA. So we are asking everyone to get behind it to the extent you can. Speaking of supporting us, it is most pleasing to report that David Bagley, a member of our group and a partner in the law firm of Hecht Solberg Robinson Goldberg & Bagley LLP, has been helping on a pro bono basis with the

legal planning and drafting of documents for the shop, thanks David.

Our March 30 member meeting will feature Russ Fillbeck reviewing with us his work with President Jimmy Carter in the area of woodworking. Many of us are aware that over the years Russ has built and donated several rocking chairs for the Carter Center annual auction. However, you may not have been aware that Jimmy actually enjoys woodworking himself, and that he works with Russ on some items; this should be interesting. Also, I have confirmed with Mike Durlak of Rockler that he will have a mentor session before our March general meeting and he apologizes for missing our meeting in January. This will start at 6PM.

Bob Stevenson's Mentor group remains active having put on a class in handsaw sharpening at the end of February led by Don Slaughter. Check the website for updates on the next classes. Ed Gladney and the Design In Wood team are ready for the crush as the date of this year's show draws closer. You still have time to finish your project to get it in this year's show, so best of luck to everyone. "Mad About The Fair," is the theme this year.

If you haven't yet checked it out, I encourage everyone to take a look at the new video our Secretary and Historian, Lou Adzima, prepared on our Toy Program. To see this interesting video which describes one of our oldest and most rewarding activities, just look under Activities, then Toy Program on the website.

~~~~~

## **Design In Wood**



**Ed Gladney**  
**DIW Coordinator**

### **2016 DESIGN IN WOOD EXHIBITION** **CALLING ALL WOODWORKERS** **TIME TO GET YOUR ENTRIES IN!**

This is our 35th year and we want to make it our best year ever! We have over \$20,000 in award money and merchandise with 25 State entry classes and 15 donors with additional awards. Each class awards 1<sup>st</sup> through 4<sup>th</sup> place plus

Honorable Mentions. There are more chances of winning an award than ever before. So get working on your winning entry. Your work will be on display to over one million fairgoers that visit our exhibit each year. Last year we had 1.5 million attendance. Again this year, we hope to improve this exceptional international competition of fine woodworking. We have an additional class of Wood Carving this year. We have secured major commitments from our many corporate and local sponsors. Our co-sponsor, the 22nd Agricultural District, also looks forward to our successful exhibition.

This year's theme is, **Mad about the Fair**. The 2016 San Diego County Fair will run from **Friday, June 3, opening at 4:00PM** through **Monday, July 4**. The Fair will be closed all Mondays (except July 4) and the first two Tuesdays. (Closed dates are June 6, 7, 13, 14, 20 and 27.)

Fine Woodworking Magazine returns as sponsor of the "Best of Show" award with a \$1,000 cash award. Not to be outdone, Popular Woodworking also has a \$1,000 award consisting of \$500 cash and \$500 in merchandise. All entry classes and awards are listed in our Information Brochure online at [www.SDFWA.org](http://www.SDFWA.org). Click on Design In Wood and click on 2016 Entry Information. Here you will find all the information you need for entering. Entry forms are available on the fair's website, [www.sdfair.com](http://www.sdfair.com).

There is plenty of computer help available for those that need it to enter. The fair entry office personnel, as well as SDFWA volunteers, are available to help with entering online. This includes help with digital photography, if needed. For help from SDFWA members, please call or email me (858) 484-4366, [EdGladney@san.rr.com](mailto:EdGladney@san.rr.com) or Jeff Bratt (619) 276-8641, [webmaster@SDFWA.org](mailto:webmaster@SDFWA.org).

#### **Please note the calendar of events below:**

Entry Deadline: Friday, April 29, 2016

Exhibit Delivery Date: Thursday, May 26, 2016  
noon to 8:00pm

Exhibit Awards Ceremony: Thursday, June 2, 2016  
7:00pm

**Volunteers from our membership are desperately needed:**



**NO experience is necessary to volunteer, and volunteering is very rewarding.**

We need help with set up starting Monday, May 16, at the fairgrounds Mission Tower building. Bring a screw gun, if you have one. There is lots to do. We have Marines to do the heavy lifting. In addition to free fair tickets, enjoy coffee, juice and donuts in the morning; a great lunch, and refreshments throughout the day.

We need members to "walk the floor" to help educate the public and protect the exhibits. A shift is three hours. You receive two tickets for each shift or four tickets for each closing (last shift in the evening).

We need members to work in the chair shop, building children's chairs for charity. A shift is two hours. You receive two tickets for each shift.

Fair tickets will be given to those who volunteer: Volunteer for several shifts and you can receive enough tickets for your family and friends. Up to 4 tickets will be given to those who help with setup (exact number depends on amount of time helping). Two tickets will be given for each floor-walking shift or chair-shop shift.

**Remember, sign up for a shift and get two (2) free tickets to the Fair. Sign up for several shifts and also get enough tickets for your family and friends.**

**AGAIN THIS YEAR: SIGN UP FOR THE CLOSING FLOOR-WALKING SHIFTS AND DOUBLE YOUR TICKETS TO FOUR (4) TICKETS FOR EACH CLOSING SHIFT**

**For those who help with set up, we have free tickets based on how much time you work, along with the refreshments and a great lunch.**

**Sign up to volunteer at [www.sdfwa.org](http://www.sdfwa.org), or at the general meetings, starting with this month's general meeting on March 30th.**

**This is your exhibit SDFWA. Let's make it the VERY BEST.**

Ed Gladney Coordinator, Design In Wood  
858-484-4366 [EdGladney@san.rr.com](mailto:EdGladney@san.rr.com)

~~~~~

## **Member Shop Project**



**Gary Anderson,  
Member Shop Chairman**

A great deal of activity is now taking place around the Member Shop Project. Most importantly, we have officially kicked off our Fundraising Program by inviting our Members to make donations. The vast majority of money raised by the other three Guilds with Member Shops was raised through Member Donations. We look forward to similar results here in San Diego!

To provide recognition and incentive for our Members to "dig deep", we've established the Founders Group. Any Member making a donation of \$250 or more will become a Member of the Founders Group. Once the Shop is opened, a large recognition wall plaque is planned to list those Members who helped the Shop become a reality. Members will also receive incentives including those listed below:

**\$250 Level:** Name on Founders Group Plaque, Waiver of Initiation Fee

**\$500 Level:** Name on Founders Group Plaque, Waiver of initiation Fee, 1 Year Gold Membership for the price of Silver Membership.

**\$1,000 Level:** Photo on Founders Group Plaque, Waiver of initiation Fee, 1 Year Silver Membership.

**\$2,500 Level:** Photo on Founders Group Plaque, Waiver of Initiation Fee, 1 Year Gold Membership.

Make no mistake, our new Shop will not build itself. Many of you have asked me, "When will the Shop open?" Well, that answer depends on you! We need every Member to step up and make the largest donation they can afford. You will soon receive a Donation form and additional information. When you do, please respond quickly and generously. If you prefer, you'll have the option of making a pledge and/or spreading your donation over a number of months.

We will also be accepting donations at the March General Meeting. If you have any questions or would like more information, please call or email me.

Gary Anderson [pinz711@aol.com](mailto:pinz711@aol.com)

~~~~~

## March Raffle



**James Strawn,  
Raffle Program Chairman**

1. Lie-Nielsen No. 5 jack plane
2. Two Cherries Set of Six Chisels
3. Veritas Gents Saw 22PPI (Crosscut)
4. Dewalt 12 volt Max Lithium Ion Drill/Driver
5. Lie Nielson No. 102 Low Angle Block Plane

## Magazine Program



**Mike Switalski, Magazine  
Program Chairman**

A big "Thank You!" to David Henry, Harry Baldwin, Mike Davis, Jon Wood, Wesly Berneberg, Matt Evans, and Ernie for their book and magazine donations at the January Membership meeting!

Due to the large number of member donations during the January meeting, we have a large inventory of new books for sale. These new offerings will probably be sold quickly, so please stop by to see the new inventory before the start of our next membership meeting on Wednesday, March 30!

### CDs & VHS Tapes Available for Sale

We still have a few wood working CDs and VHS tapes available for sale to members during the March membership meeting. If you are interested in purchasing any of these items, please stop by the Magazine Sales area before the meeting; as these CDs and VHS tapes are not expected to last long!

CD/VHS Tape	Description	Price
Woodsmith Magazine	1 CD #1 - #200 (unopened)	\$45
Repairing Furniture	With Bob Flexner	\$2
Router Joinery	With Gary Rogowski	\$2

## Pro Bono Report

**James Vitale, Pro Bono Chairman**

### BOARD OF DIRECTORS:

Jary Peterson  
Board President  
Gap Intelligence

Garen Terra  
Board Vice President  
Special Olympics SD

Elizabeth Brann  
Board Secretary  
Paul Hastings, LLP

Mike LaHuer  
Board Treasurer  
Online Bookkeeping  
solutions

Jan Flood  
Board Member  
Continental Maritime

Jane Nares  
Board Member  
Janli Vintners

Varti Montblau  
Board Member

Jon Wood  
Board Member  
Wood Insurance

Myssa Pearson  
Board Member  
Nellis Fargo Bank

Andy Zlotnik  
Board Member  
Zlotnik Law/McKinney  
Advisory Group

Wynnie Bradford  
Board Member  
Office of Mayor Kevin L.  
Cauconer

Julie Bass  
Board Member

Iam Bhavnani  
Board Member  
Quantis, LLC

Jiz Phillips  
Board Member  
Zualcomm

Nilegra Heyligers  
Board Member  
BrightScope



January 8<sup>th</sup>, 2016

The San Diego Fine Woodworkers  
<http://www.sdfwa.org/>

Dear San Diego Fine Woodworkers,

Thank you for your generous contribution of one hundred wonderful hand-made wooden toys to the Emilio Nares Foundation's Santa's Workshop during the holiday season. Because of you, many of the families we serve had a gift to unwrap and we thank you for that. The Emilio Nares Foundation navigates families through their child's journey with cancer.

- **Ride With Emilio:** Ensuring that all children battling cancer in San Diego have access their life-saving cancer treatment on time, every time, whether the child lives 7 miles or 70 miles from the hospital! (4,000 trips annually!)
- **Emilio's Snack Bags:** Ensuring that young patients and their waiting family members have healthy sustenance during a time of great stress.
- **Family Resource Center:** Providing opportunities for patient families to connect with financial aid, employment, housing and other vital services, with guidance from a bilingual ENF staff member.
- **Creating For Hope:** Guided sewing, knitting and crocheting support circles for mothers whose children are in treatment.
- **Loving Tabs Healing T-Shirts:** Specialty t-shirts that allow young, frightened patients to remained clothed, warm and comfortable, while health care providers still have access to IV and other medical equipment.

On behalf of our patient families, thank you again for your support! Please feel free to contact me directly with any questions or comments, or to schedule a tour of our programs at Rady Children's Hospital San Diego.

Sincerely,

Richard Nares  
Executive Director & Co-Founder  
[richard@enfhope.org](mailto:richard@enfhope.org)

Donated Amount: 100 Wooden Toys!

Date of Donation: 12/21/15

EMILIO NARES FOUNDATION is a 501(c)(3) nonprofit organization, Federal Tax ID# 13-4229276. Your contribution is 100% tax deductible. No goods or services were received for this donation.

11230 Sorrento Valley Road, Suite 100, San Diego, CA 92121

[www.ENFHope.org](http://www.ENFHope.org)

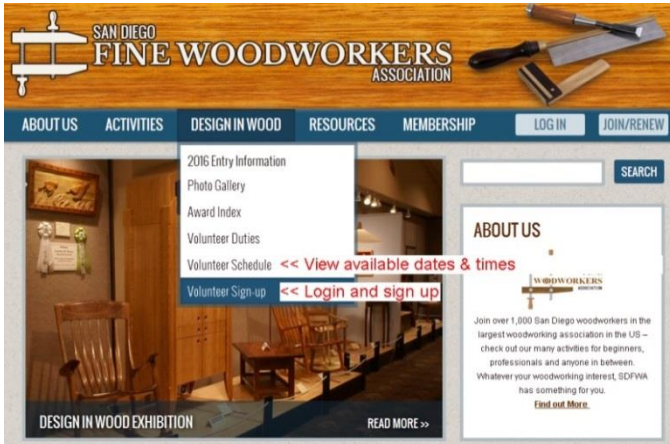


**Notice: Ron Rossi, Craftsman List Chairman has completed the 2016 Craftsman List. You may view it at: <http://www.sdfwa.org/craftsman-list/>**

## Notes from the Webmaster



**Jeff Bratt,  
Webmaster  
Design in Wood – On-line Volunteer  
Sign-up**



You can easily sign-up for volunteering at Design in Wood on the [SDFWA website](#). There are menu links for Volunteer Duties, Volunteer Schedule where you can look at the available dates & times, and volunteer. Sign-up where you first login:

### VOLUNTEER SIGN-UP - DESIGN IN WOOD 2016

The 2016 Fair runs from June 3rd through July 4th. Scroll up and down to see the whole schedule.

**Design in Wood Volunteers login**

Email:

Member Number:

Enter the email address where you receive email from SDFWA and your SDFWA membership number – from your card. Then click the Login button. Logging in lets us know who you are – so we can properly construct the volunteer schedule and mail your tickets to you. Then you will see a grid with the volunteer shift schedule for both the Gallery Floor and the Chair Shop – scroll up and down to see all the days the Fair is open. Click on any white or grey square to select a shift, and then click on the Assign Time button to sign up – it's that easy!

Note on the Clear Time button – it will clear the information in the bottom panel – or you can just click on another vacant time slot. Once you click the Assign Time button, you are committed to the selected time slot. If you subsequently need to cancel or change your shift, you must contact Doug Murphy by email or phone

### VOLUNTEER SIGN-UP - DESIGN IN WOOD 2016

The 2016 Fair runs from June 3rd through July 4th. Scroll up and down to see the whole schedule. Click on a white or grey square to select that time slot... then click the Assign Time button at the bottom of the schedule.

Green time slots have been reserved, black time slots are non-work periods.

**\*NOTE: For the first Gallery session of the day the start time is 11 AM week days and 10 AM weekends.**

		GALLERY FLOOR VOLUNTEERS				CABINET SHOP VOLUNTEERS			
Date	Period	Note - 1 pm	1 pm - 4 pm	4 pm - 7 pm	7 pm - 10 pm	12 am - 2 pm	2 pm - 4 pm	4 pm - 6 pm	
6/4/2016	1								
6/4/2016	2								
6/5/2016	1								
6/5/2016	2								
6/6/2016	1								
6/6/2016	2								
6/7/2016	1								
6/7/2016	2								
6/8/2016	1								
6/8/2016	2								
6/9/2016	1								
6/9/2016	2								
6/10/2016	1								
6/10/2016	2								
6/11/2016	1								
6/11/2016	2								
6/12/2016	1								
6/12/2016	2								
6/13/2016	1								
6/13/2016	2								
6/14/2016	1								
6/14/2016	2								

↑↑↑ Click on a vacant time slot to select it

If you have a spouse membership card, ↓↓↓ select which person is volunteering

☐ Member ☐ Spouse \*Your spouse is a member Select the time for yourself or your spouse

**See your selection below**

Date: 6/10/2016

Period (1 volunteer slot): 1

Session (Time): 2

↑↑↑ Click on Assign Time to sign-up for this time slot

## Toy Program

### Roger Solheid, Toy Program Chairman

Since our last report, the following toys have been completed in 2016:

6	Trucks	Carlson & Bierman
80	Cutouts	Jim Bradbury
36	Baby Beds	Norm McHugh
40	Cars	Geo Bryne
13	Rolling Dogs	Ed Hujsak
10	Cars	Ed Hujsak
7	Blue Birds	Ed Hujsak

Our toy production total for the period was 192 and 192 for 2016.





## Seminar Opportunity

### **The Society of American Period Furniture Makers is Presenting Their Spring Seminar**

Alfred "Alf" Sharp, SAPFM 2008 Cartouche Recipient, will present the SAPFM Spring Seminar Friday, April 29, Saturday, April 30, and Sunday, May 1<sup>st</sup>, at Cerritos College. The current subject area will be furniture history, carving, turning and the construction of a Philadelphia pie crust tea table.

Anyone wanting more information on the seminar contact: Brad Ormsby at [bormsby@sbcglobal.net](mailto:bormsby@sbcglobal.net) or Bob Stevenson at [bobscww@cox.net](mailto:bobscww@cox.net)

For information on the SAPFM go to [www.sapfm.org](http://www.sapfm.org) . For information on Cerritos College go to [www.cerritos.edu](http://www.cerritos.edu) .

~~~~~

## A Visit to Wood VII

### **Article and photos by Mike McElhiney, Community Outreach Chairman**

The morning glowed with promise. Another boringly beautiful February day in San Diego! My calendar told me Thursday was set aside for visiting the Escondido furniture show put on yearly by Brian Murphy. But today, this perfect Wednesday, told me to go a day early. So I called a friend, grabbed my iPad and headed north.

Grand Ave. said my gps. The venue is easy to find but turned out to be deserted when I arrived. But for the woman standing hopefully on the curb, I'd have headed for home. Closed on Wednesday? Who would suspect? Then the woman waved at someone and that someone was the curator of the show. Evidently, the El Niño from earlier in the week had caused a problem. The skylight leaked and today was the day to fix it. It was housed in a large crate, just outside the building, and a 50's Mack truck housed the Coronet "Hoisting Service." The long, green arm of the crane was poised over the box and three riggers worked to secure the giant lens.

So we parked, managed to get in, and took pictures of "WOOD VII, A Furniture Show", put on by Murphy's Fine Furniture, and hosted by the friendly Escondido Municipal Gallery located at 262 E. Grand Ave.

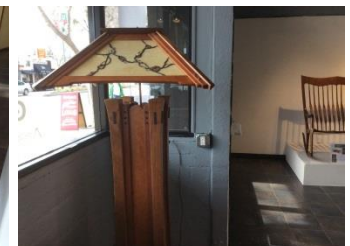
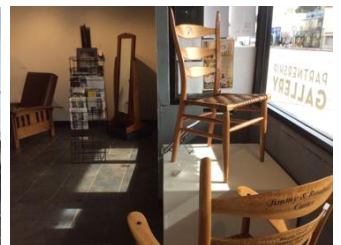
A careful chair created by Russ Filbeck greeted me as I entered the gallery and Del Cover's "Trump Tower" with its mirror "windows" showed me my reflection. A very nice side table bore the stamp of Dick Ugoretz. Bob Stevenson's piece was no surprise – perfect and sure to take a first should he enter it in Design in Wood. Other members of our guild, plus Brian Murphy, had furniture in this exhibition.

The venue is low key, pleasant and an excellent way to show the skills of the woodworkers who entered. Brian Murphy sent around an email from State Senator Joel Anderson, who was quite impressed with the show.

"Hi Everyone,

The "WOOD VII, A Furniture Show" is just getting rave reviews and the Gallery is full of visitors. Some real great news is that our State Senator Joel Anderson liked the Show so much that he has awarded each of you in the Show a Certificate of Recognition. I have attached mine. This type of recognition is not given very often and is an indicator of the impressiveness of your work and the show. You can pick up the Certificate any time or when you pick up your furniture at the close. It would be very good to thank him and there is contact information on the packet...Congratulations one & all!"

**Brian H Murphy**





## **Report on the American School of Marquetry Shop Tour**

**Photos by Lou Adzima, Association**

**Historian, Treasurer**

**Article by Adrian Larson, Editor**

On January 9<sup>th</sup>, Pat Edwards opened his shop to us. The event was well attended. I asked Pat if he would answer a few questions for this article and soon saw what a professor he is. He graciously gave a biography of his life for all to hear; a small part of which follows:

Pat was born in Los Angeles, but grew up in San Diego. He was in the first graduating class of Revelle College, UCSD. He has a degree in high energy particle physics. While a student, he spent 1968 studying and working on the particle accelerator at Brookhaven Laboratories, Long Island, NY. He returned to UCSD, graduated, and was hired by Maxwell Laboratories, San Diego to work on a high energy switch design. In 1973, he came to a crossroads in his life: He could stay with Maxwell Laboratories and pursue only physics, or, work full time in his own shop, Antique Refinishers, on Adams Avenue, which he had opened in June 1969. Pat had done antique repair and refinishing while at UCSD to help pay for his studies. In fact, he was so good at it that it proved quite lucrative. The fact that it was more lucrative than working for Maxwell Laboratories helped him make his decision. In 1975, he moved to his current location on Utah Street.

Pat and his partner, Patrice Lejeune, teach marquetry at his shop. Two methods of marquetry are taught: the Boulle method and the piece-by-piece method. The classes are offered every three months or so and are two weeks long. Both men are eminently qualified to teach. Patrice is a graduate of the Ecole Boulle in Paris. Go to [www.ecoleboulle.org](http://www.ecoleboulle.org) to learn of this prestigious

school. Google "Andres Charles Boulle" to learn about the school's namesake.

Pat was invited to attend Ecole Boulle in January, 1992, and studied French marquetry for 3 months. He returned at the same time each of the next three years to continue his studies. Unlike Patrice, who was a full time student, Pat paid tuition and received a "certificate de stage" upon completion of each level of work. After his fourth year at the school, he was successful in negotiating a contract between Ecole Boulle and his business, Antique Refinishers, for accreditation. Under this contract, he was able to receive 18 students between 1995 and 2000 for advanced studies in the field of marquetry. It was necessary to return each year during this contract to interview new students, and that is how he was introduced to Patrice, who was a graduate and running his own business in Paris. In 2000, Pat's professor at Ecole Boulle, Dr. Pierre Ramond, retired, ending Pat's relationship with the school. That was when he decided to start the American School of French Marquetry in San Diego.

As if Pat's life wasn't busy enough, he also has a very close association with SDFWA. From 1987-1995 he was Superintendent of Design In Wood at the Del Mar Fair. During that time, he instituted many things we see at DIW today. In 1987, he created and built the chair shop; stocking it with his own tools. He instituted the volunteer system to staff DIW and rewarded them with fair tickets. From its inception in 1982 until 1995, DIW didn't have a permanent location at the fair. In 1996, the building where it is presently held was built.

One last thing that Pat passed on to the people attending the shop tour was a peek at his business model. He makes his business work with many streams of income: Restoration, fabrication and education; all involving marquetry. In addition, he sells a glue that he was involved with formulating. It is hide glue modified with urea that stays liquid. It is called Old Brown Glue: [www.OldBrownGlue.com](http://www.OldBrownGlue.com). He also upholsters, carves, veneers, consults, and is an expert witness in court. All of these revenue streams make his business profitable.

Pat's work is of the highest level and he is one of the few people to receive the Cartouche Award from the Society of Period American Furniture Makers. For information on this award go to: [www.spafm.org/winners](http://www.spafm.org/winners). To follow Pat's blog go to: [www.WpatrickEdwards.blogspot.com](http://www.WpatrickEdwards.blogspot.com)



available as Old Brown Glue™ or Titebond Liquid Hide™.



**Synthetic adhesives**, first developed in the 1930s and used in industry during WW II, became commercially available in the late 1940s. There are two categories: *reactive*, which harden in a chemical reaction (cyanoacrylates and urethanes - exposure to moisture, epoxies - on mixing of two components); and, *non-reactive*, which harden with solvent evaporation (polyvinyl acetate or PVA and contact cement).

**PVA glues** dominate the market for general woodworking. The original PVA product was Elmer's Glue-All™, introduced by Borden (yes, the dairy company) in 1947. Borden became a maker of adhesives during WW II using casein, a byproduct of milk and the main component of cheese. Casein glue was used in aircraft construction. There are now many brands and types of PVA glue which differ in water resistance and, to a lesser degree, in strength and working time. They are all subject to creep under sustained stress. Common brands of PVA glue are Titebond, Elmer's and Gorilla.

ANSI (American National Standards Organization) classifies glue according to water resistance: Type I – waterproof; Type II - water resistant; Type III - no water resistance. Type I glues have longer working time and are more expensive. This is confusing because Titebond™ names their PVA products "Original" *which is not water resistant*, "Titebond II" - *which is water resistant* and "Titebond III" - *which is waterproof*.

**Urea-formaldehyde glue** (Weldwood Plastic Resin™, Unibond 800™) is one of several resin (originally, any sticky, mineral-rich secretion from plants or trees - now, synthetic polymers with similar properties) based adhesives. They all have good strength, long working time, rigidity and durability. They are useful for bentwood lamination and veneering. Precautions for release of formaldehyde vapor are required. Weldwood comes in powder form and is activated by mixing with water. Unibond 800 is a liquid, activated by addition of a hardener and is very water resistant. Variants are resorcinol-formaldehyde; water and solvent proof, approved for wooden aircraft construction and phenol-formaldehyde, used in plywood manufacture.

## ~~~~~ GLUE



**Article by Dick Ugoretz,  
Member at Large**

Archeologists tell us that people have been using glue to stick things together for many thousands of years: birch bark tar for spear points as long ago as 200,000 years; plant gum and ochre in Africa in 70,000 BC; a collagen based substance in the middle east about 8,000 BC; and, a form of hide glue in Egyptian furniture around 2,000 BC.

Improved animal based adhesives were made by ancient craftspeople who learned to clean and boil skins, sinew or hooves in alkaline solution to yield collagen, a fibrous protein. This could be dried, pulverized, and mixed with water to produce a sticky gel which solidifies when cooled. Hide and other animal glues continue to be used today. Fish glue (isinglass or ichthocol) is used in bookmaking and bonding wood to other materials. Rabbit skin glue is quite strong, useful for gilding, traditional woodworking and painting techniques.

**Hide glue** is still the choice for reproduction of antiques, repair of musical instruments or furniture and veneering. It has the useful qualities of neutral pH, reversibility with heat, rigidity, strength and adhering to itself. Stradivarius is said to have used a secret formula, partly responsible for the quality of his violins. Hide glue is not water resistant, requires heating and some time to prepare and can spoil in the glue pot. When urea is added, hide glue remains liquid and stable at room temperature,

**Cyanoacrylate glue** has an interesting history. It was synthesized in 1942 in an effort to make clear plastic gun sights, but it stuck to nearly everything. The inventor, Harry Coover, noted this but did not pursue its potential as an adhesive. In 1947, when working at Eastman Kodak, his colleague, Fred Joyner, saw CA instantly bond two glass prisms. In 1958, Eastman Kodak marketed CA adhesive as Eastman #910; later Super Glue™.

CA glues polymerize on contact with hydroxyl ions in water, forming a strong, durable plastic mesh. Wood chemistry delays polymerization, but bonding is enhanced if surfaces are moistened. CA has no gap filling ability and will not bond to itself or to cured PVA. If surfaces are not smooth and flat, joints will fail. Gel versions work better with wood because they are less prone to wicking. CA is best suited for small parts and repairs. It will instantly bond to skin and is very dangerous on eye contact. Irritating, sensitizing fumes are also to be avoided.

**Epoxy glue** requires mixing of resin and hardener and is available in formulations with different setting rates. Epoxy has considerable gap filling ability and, in fact, produces weaker bonds in very tight joints. It bonds well to other adhesives, with the exception of PVA glue. These properties make epoxy practical for joint repair. An article on this subject can be found at;  
<http://www.sawmillcreek.org/showthread.php?21822-Are-Your-Glue-Joints-Repairable>

**Polyurethane glue** (Excel™, Gorilla Glue™), the most recent new adhesive, was introduced in the U.S. in 2003; it is marketed as very strong, waterproof, all-purpose glue. Although able to bond a wide variety of materials, it has a property that limits its use in woodworking. When it cures it expands, producing a tough foam. With very thin application and tight clamping, strong joints can be made. However, without tight, well clamped joints, the foam pushes surfaces apart, producing a weak joint and leaking out at the edges making clean up a problem because it is resistant to solvents. The manufacturer of Gorilla glue maintains that it produces stronger joints than PVA glue when used on end grain.

Fine Woodworking (August, 2007 #192) published a test of the strength of joints made with six different adhesives. Each glue was used to make bridle joints in maple, oak and ipe; with tight, snug

or loose fit. A Type I PVA glue, Titebond III™, had the greatest average breaking strength of the six samples. Polyurethane glue failed in all loose fitting joints. A summary of the results of this test is printed at the end of this article.

Glue joints can, and will if you are not careful, eventually fail for many reasons. The most important are: **starved joint** - due to insufficient adhesive, excessive clamping pressure, surfaces not freshly sanded or planed, preventing penetration of adhesive into wood fibers or wicking into endgrain; **premature cure** - due to exceeding the working time of the adhesive; **failure to cure and bond** - due to over age glue, cold, excessive moisture, bad chemistry, contaminated or oily surfaces; **mechanical weakness** - due to poor clamping, loose fit, rough or non-flat surfaces or inadequate surface area.

Two valuable references that include many aspects of gluing not covered in this article. A comprehensive discussion of the science and application of adhesives used in woodworking is published in *Adhesive Bonding of Wood* USDA Bulletin #1512.  
<http://www.woodcenter.org/docs/tb1512.pdf>

Chapter 11 of Bruce Hoadley's excellent book, *Understanding Wood*, explains the elements of successfully joining wood with glue.

**From Fine Woodworking August, 2007**

| Glue Type,                             | Av. Joint Strength, as (Kg.), |             |
|----------------------------------------|-------------------------------|-------------|
| Joint Strength as % of Type I PVA Glue |                               |             |
|                                        | Kg.                           | %Type 1 PVA |
| TYPE I PVA                             | 918                           | 100%        |
| Slow Epoxy                             | 904                           | 99%         |
| PVA Type III                           | 873                           | 95%         |
| Liquid Hide Glue                       | 723                           | 79%         |
| Hot Hide Glue                          | 694                           | 76%         |
| Polyurethane                           | 528                           | 58%         |

~~~~~

# 2016 San Diego Fine Woodworkers Association

## DIRECTORS

President:	Bernie Burke	760-723-0972	<a href="mailto:president@sdfwa.org">president@sdfwa.org</a>
Vice-President:	Dale Stauffer	619-561-2202	<a href="mailto:vice-president@sdfwa.org">vice-president@sdfwa.org</a>
Treasurer:	Jeff Bratt	619-276-8641	<a href="mailto:treasurer@sdfwa.org">treasurer@sdfwa.org</a>
Secretary:	Lou Adzima	858-349-2780	<a href="mailto:secretary@sdfwa.org">secretary@sdfwa.org</a>
Member at Large:	Dick Ugoretz	858-490-6295	<a href="mailto:MemberAtLarge@sdfwa.org">MemberAtLarge@sdfwa.org</a>

## COMMITTEES

Community Outreach	Mike McElhiney	858-761-7020	<a href="mailto:outreach@sdfwa.org">outreach@sdfwa.org</a>
Craftsman list:	Ron Rossi	619-582-9883	<a href="mailto:CraftsmanList@sdfwa.org">CraftsmanList@sdfwa.org</a>
E-Mail List Manager:	Harry Baldwin	858-278-8718	<a href="mailto:EmailManager@sdfwa.org">EmailManager@sdfwa.org</a>
Historian:	Lou Adzima	619-922-0311	<a href="mailto:ilovejamul@cox.net">ilovejamul@cox.net</a>
Magazine & book sales:	Mike Switalski	858-444-0085	<a href="mailto:mikeswital@hotmail.com">mikeswital@hotmail.com</a>
Membership:	Bryan Blacksher (C)	858-414-7233	<a href="mailto:sdfwa.membership@gmail.com">sdfwa.membership@gmail.com</a>
	Mike Davis	858-486-1014	<a href="mailto:sdfwa.membership@gmail.com">sdfwa.membership@gmail.com</a>
Membership Greeter:	Kevin Deal	951-565-6848	<a href="mailto:kevind1956@sbcglobal.net">kevind1956@sbcglobal.net</a>
Member Shop Project	Gary Anderson (C)	619-670-1181	<a href="mailto:pinz711@aol.com">pinz711@aol.com</a>
	Pete Sterling	858-484-6696	<a href="mailto:psterli1@aol.com">psterli1@aol.com</a>
	Jeff Bratt	619-276-8641	<a href="mailto:jeffsd@san.rr.com">jeffsd@san.rr.com</a>
Mentor Program:	Bob Stevenson	619-422-7338	<a href="mailto:MentorProgram@sdfwa.org">MentorProgram@sdfwa.org</a>
Merchandise:	Matt Evans	858-366-5499	<a href="mailto:mattsurfs20@gmail.com">mattsurfs20@gmail.com</a>
Newsletter:	Adrian Larson	858-672-1808	<a href="mailto:newsletter@sdfwa.org">newsletter@sdfwa.org</a>
Pro Bono:	Jim Vitale	858-623-8630	<a href="mailto:jamespvitale@yahoo.com">jamespvitale@yahoo.com</a>
Programs:	Del Cover	858-270-7739	<a href="mailto:del@delcoverwoodworking.com">del@delcoverwoodworking.com</a>
Property:	Dale Stauffer	619-561-2202	<a href="mailto:ddstauffer@cox.net">ddstauffer@cox.net</a>
Publicity:	Clare Pister (C)	434-989-2357	<a href="mailto:publicity@sdfwa.org">publicity@sdfwa.org</a>
	Jeanne Skinner	619-561-1655	<a href="mailto:jskinner11687@yahoo.com">jskinner11687@yahoo.com</a>
Refreshments:	Don Spangler (C)	858-270-6165	<a href="mailto:coffeeorganic@hotmail.com">coffeeorganic@hotmail.com</a>
	Ron Rossi	619-582-9983	<a href="mailto:ronrossi@cox.com">ronrossi@cox.com</a>
	Carl Drake	619-446-7532	<a href="mailto:carl.drake03@gmail.com">carl.drake03@gmail.com</a>
	George Latucca	858-337-7862	<a href="mailto:glatucca@san.rr.com">glatucca@san.rr.com</a>
Resources/Raffle:	Jim Strawn	619-887-8090	<a href="mailto:jlstrawn@cox.net">jlstrawn@cox.net</a>
Scholarships:	Jim Strawn	619-887-8090	<a href="mailto:jlstrawn@cox.net">jlstrawn@cox.net</a>
Shop Tours:	Dale Stauffer	619-561-2202	<a href="mailto:ddstauffer@cox.net">ddstauffer@cox.net</a>
Shows & Exhibits:	Ed Gladney	858-484-4366	<a href="mailto:DesignInWood@sdfwa.org">DesignInWood@sdfwa.org</a>
Sound Technician:	Tony Tait	619-723-4513	<a href="mailto:ttait1@gmail.com">ttait1@gmail.com</a>
Special Events:	Ed Gladney	858-484-4366	<a href="mailto:gladney@san.rr.com">gladney@san.rr.com</a>
Swap Meet:	Don Spangler	858-270-6165	<a href="mailto:coffeeorganic@hotmail.com">coffeeorganic@hotmail.com</a>
Toy Program:	Roger Solheid (C)	858-279-1140	<a href="mailto:rsolheid@sbcglobal.net">rsolheid@sbcglobal.net</a>
	Charlie Bierman	619-276-0048	
	Terry Stolzoff	619-869-1224	<a href="mailto:woodycut@gmail.com">woodycut@gmail.com</a>
Video Library:	Bob Reese	858-695-2460	<a href="mailto:rreese@gmail.com">rreese@gmail.com</a>
Video Technician:	Michael Fairbanks	619-465-4972	<a href="mailto:mkfairdpmm@netscape.net">mkfairdpmm@netscape.net</a>
Wants and Disposals:	Dave Barnhart	760-721-1457	<a href="mailto:WantsAndDisposals@sdfwa.org">WantsAndDisposals@sdfwa.org</a>
Web Site:	Jeff Bratt (C)	619-276-8641	<a href="mailto:webmaster@sdfwa.org">webmaster@sdfwa.org</a>
	Doug Murphy	619-441-9665	<a href="mailto:dw-murphy@cox.net">dw-murphy@cox.net</a>



# Meeting Dates for 2016

## General Membership Meetings

Al Bahr Temple  
5440 Kearny Mesa Road, SD  
(behind the Hampton Inn)  
7:00 PM

### **Wednesday:**

March 30  
April 27  
June 1  
July 27  
September 28  
November 30

## SDFWA Mailing Address

P.O. Box 82323  
San Diego, CA 92138-2323

## Wants and Disposals

**Dave Barnhart,**  
**Wants and Disposals Chairman**

As you all know, the Wants & Disposals is open only to current members that want to Buy, Sell, or Trade equipment or supplies. It is not for commercial ads.

To list an item, please email **Dave Barnhart** at: [WantsAndDisposals@sdfwa.org](mailto:WantsAndDisposals@sdfwa.org) or call: 760-721-1457 and leave only your name, identify yourself as a SDFWA member, and an evening call back number.

Please provide the following: Full Name; Email address, if you have one; the general area of town or San Diego Co. where the equipment can be seen; price range; and item description.

You can bring a picture to the meeting and give a brief talk or sales pitch. We do not have a display area, so please bring only pictures to the General Meeting.

**Please Note:** Each ad will only run in one issue of the newsletter. If you want to run the ad again, you will have to resubmit the information to Dave Barnhart at the above listed email or phone number.

## Board Meetings

The Hardwood & Hardware Co.  
8849 Complex Drive, SD  
7:00 PM

### **Wednesday:**

April 6  
May 4  
July 13  
September 7  
November 2

## SDFWA Web Page Address

<http://www.sdfwa.org>

## Wants:

- **Need source for custom bandsaw blades.**  
I need to find 142" blades for my bandsaw.  
**Paul Appelquist** (619) 396-3090
- **Used combo bench belt (4"x36" minimum) and disc sander (6" minimum)**  
I would prefer an older unit with ½ hp motor made in the USA.  
**Steve** (858) 248-1350 [sksmurthwaite@gmail.com](mailto:sksmurthwaite@gmail.com)
- **SawStop Cabinet Table Saw**  
**Mark Richardson** (760) 500-8101  
[mtrichard@sbcglobal.net](mailto:mtrichard@sbcglobal.net)

## Disposals:

- **FREE POPLAR Trees**

We have two, possibly three, 40' poplars trees, very straight, that just died behind our house.

[davidbrin@sbcglobal.net](mailto:davidbrin@sbcglobal.net)

- **Powermatic Scrollsaw \$300**

**Mike Zukovich** (619) 992-5066

[mikezukovich@icloud.com](mailto:mikezukovich@icloud.com)

- **Rockler Complete Dovetail Jig**

(Includes dust collector) along with router upgrade kit for sale. Used for two drawer projects with excellent results and looks like new, comes with manual, **asking \$75.**

**Bob Bernier** (619) 248-1115

[bob767i-shop@yahoo.com](mailto:bob767i-shop@yahoo.com)

- **Craftsman Jointer** 6-1/8" Model

113.20650 \$125.00

**Dennis Kehoe** (760) 802-8418

[denniswkehoe2003@yahoo.com](mailto:denniswkehoe2003@yahoo.com)

- **Fine Homebuilding Magazines**, 175 back issues.

From #78 January 1993 to #254 November 2015. These are a great reference for a professional home builder or if you are planning to build a house. In great condition, asking 50 cents per issue or your best offer. They need a new home!

**Ken Shaw** (858) 452-3757

[Drsoils@sbcglobal.net](mailto:Drsoils@sbcglobal.net)

- **JET CTAS-150 Cabinet Saw.**

(already disassembled) 50" Vega fence, Jessum router plate in long side of fence with a Rockler router fence. 36" out feed table with rollers. Biesemeyer Angle blade finder installed, 6" Dado set, new Freud glue line rip blade, Yellow Kick Back Wheels and Biesemeyer anti-kick-back splitter. All manuals and instructions. Very good condition.

Note heavy Saw 500#+ **\$500.00**

(760) 743-6923

[americanfurniture@cox.net](mailto:americanfurniture@cox.net)

- **Free Fresh Cut Pine**

**10-15" dia. x 5-8" long** Torry & Starry Pine

**Lauren Olsen** (858) 531-0908

[Olsen.lauren@gmail.com](mailto:Olsen.lauren@gmail.com)

- **Laguna Tools horizontal mortiser** (requires router) \$275

**Delta benchtop 12" disc sander**, model 31-120

Adjustable table, 1hp motor \$150

**Rigid wet/dry shopvac**, 8 gal capacity, Model WDO. \$85

**Porter Cable pancake air compressor**, 6 gal capacity. \$85

**Richard Fink** [rmfwoodman@gmail.com](mailto:rmfwoodman@gmail.com)

- **Powermatic PM 719A Mortiser** with: HTC universal base, Jet mortising chisels size: 2 and 1/4", 3/8", 1/2", 5/8"; Clico Mortising Chisel 1/4"; All collars and parts with original purchase, excellent condition, used for only 3-4 projects. Asking price \$750 (858) 822-8471 [darkin@san.rr.com](mailto:darkin@san.rr.com)

- **Shop Stand Trolleys**, very sturdy with heavy duty wheels. Base size: 52" x 37" Height: 51" x 72" **Eight available at \$45 each.**

**Gavin Dawson** (760) 685-2994

[gavin1372@gmail.com](mailto:gavin1372@gmail.com)

- **Partially built steamer trunk: \$150.**

20"x24"x21" high, mahogany and oak sides dovetailed to oak bottom and top, also have the 1/4"x1.25" trim for all of the edges.

**Del Cover** (858) 395-6837

- **Stanley Safety Speed Cut panel saw,**

Model number H-4, serial number P- 94. It has an 8" blade and the saw is 2.5 HP, 13 amps and runs at 5800 RPM. It takes a 4x8 panel: asking **\$500 or best.**

**Don Hicks** 619- 540-1949

- **Multiple Items:**

Most items are new. A couple items were used once for a particular project.

**\$4375 for the whole lot**

Rare Rockwell Delta wood lathe, cast iron tool stand #DDL181 \$199.00

Rockwell Delta Lathe steady rest \$100.00

Rockwell Delta 46-450 serial # FH-2685 wood lathe \$1500.00

RD Gap filler block \$149.00

Rockwell Delta Screw Center with Morse Taper  
\$29.00

Rockwell Delta lathe Center \$11.00

Craftsman Spur Center No. 2 M.T. 9 21072  
\$30.00

Rockwell Delta 6" tool rest \$53.00

Rockwell Delta 24" tool SUPPORT with 2 posts  
\$129.00

Spinning Tool Rest and Fulcrum \$95.00

Craftsman Ball Bearing 60' Center No. 2 M.T, 9  
21132 \$34.00

Rockwell Delta Banjo stock wrench \$29.00

Rockwell Delta 46-950 3 JAW 4" Leather Chuck  
with two jaw sets \$68.00

Rockwell Delta 46-490 Spinning Center  
With Interchangeable Centers 60', Cup, and Flat  
\$57.00

Rockwell Delta CWL=43 LATHE offset tool rest  
holder extension \$49.00

Jacobs Geared ½" drill chuck \$45.00; 3" face plate  
\$20; 6" face plate \$39; 9" face plate \$46

No. of Rd Metal Spinning Tools set of 5  
Never used \$375.00

Rockwell Delta Cup Center 2 MT Replaceable Tip  
Morse Taper \$14.00

Rockwell Delta Spur Center 4 spurs \$16.00

Rockwell Delta Wood Lathe  
Metal Turning Compound Slide Rest \$250.00

Getting the Most Out of your Lathe wood/metal  
turning book \$19.00

Set of 4 Carbide Wood Turning Chisels  
Never used \$200.00

Rockwell Delta Spur Center drive \$29.00

Set of 10 HSS Wood turning chisels  
Never used \$318.00

Rockwell Delta 46-480 Wood Turning Duplicator  
\$200.00

Rockwell Delta Right Angle 6" tool support \$39.00

Rockwell Delta #46-111 straight 12" tool rest  
\$34.00

Two Rockwell Delta DDL594  
Tool rest holders AKA Banjo \$99.95 each

**Charles Anacker** [charles@anacker.fr](mailto:charles@anacker.fr)

**Updated List and Photos available on website**  
**Please check the website at** [www.sdfwa.org](http://www.sdfwa.org) or  
<http://www.sdfwa.org/wants-and-disposals/>



## Sponsors

To receive your discounts, please show your membership card before you make a purchase

### **Bayside Paint, Inc.**

[www.baysidepaint.com](http://www.baysidepaint.com)

Email: [info@baysidepaint.com](mailto:info@baysidepaint.com)

1228 Knoxville St., San Diego, CA 92120

Phone (619) 275-7800

Hours: 6:30 – 5:30 M-F, 8 -5 Saturdays

**Robert Lewis, Manager**

Mohawk Finishing Products and many other stains, sealers, fillers and tools. Free delivery with minimum order and UPS shipping available.  
10% discount to SDFWA members

### **DeWalt, Porter Cable, Delta Factory Service Center**

7290 Clairemont Mesa Blvd., San Diego, CA 92111

Phone: (858) 279-2012

Hours: 7:30-4:30 M-F

**Dave Stelmachowski, Manager**

Porter Cable, Delta, DeWalt, Devilbiss, FLEX, Biesemeyer and Oldham Parts, Accessories, Repairs and Reconditioned Tools.  
Special consideration to SDFWA members

### **Environmental Spray Systems**

[www.espraysystems.com](http://www.espraysystems.com)

Email: [service@espraysystems.com](mailto:service@espraysystems.com)

7114 Convoy Ct. San Diego, CA 92111

Phone: (858) 279-7114

Hours: 8:00-5:30 M-F

**Sam Rinaker, Owner**

Specializing in spray finishing equipment. Local distributor for Devilbiss, Graco, Paasche, Accuspray, Ransberg and Gema. 10% discount to SDFWA members.

### **Fas-N-Go**

2260 Main St. Suite 15, Chula Vista, CA

Phone: (619) 424-4774

Hours: 7:30-5:00 M-F

Nail guns, brads, staples, nails, plus accessories for nail guns and repair service. Distributor for 3M, Senco, Haubold, Josef Kihlberg, Spotnail, Hitachi, Bostich and Paslode.

10% discount on sales and service to members.

### **Frost Hardwood Lumber**

[www.frosth hardwood.com](http://www.frosth hardwood.com)

6565 Miramar Rd. San Diego, CA 92121

Phone: (858) 455-9060 (800) 258-3534

Hours: 7:00-4:30 M-F, 8:00-12:30 Sat.

**Jim Frost, proprietor**

They stock a wide variety of domestic and imported hardwoods as well as veneers, laminates and many other supplies for the commercial and hobbyist woodworker. The Frosts (Mr. G. T., Bruce and Jim), along with their staff, stand ready to serve your woodworking needs.

Special SDFWA discount.

### **TH&H The Hardwood and Hardware Company**

The Woodworkers one Stop for Material and Supplies

[www.th-h.com](http://www.th-h.com)

8849 Complex Dr. San Diego, CA 92123

Phone: (858) 536-1800 Fax: (858) 614-1811

Hours: 7:00-5:00 M-F, 9:00-4:00 Sat.

**Tom Drinnon, Manager**

Hardwood lumber, Moldings, Veneers, Cabinet Hardware, Finishes, Hand Tools and Supplies.  
Contractor discount to members.

**TH&H** goes out of their way for SDFWA! They open their doors and stay late for our board meetings.  
Thanks **TH&H**!

### **Lane Stanton Vance Lumber**

360 Vernon Way, El Cajon, CA 92020

Phone: (619) 442-0821

Hours: 7:00-3:00 M-F

The company carries domestic and imported hardwoods, molding and panel products for cabinet makers, furniture makers and contractors. Contractor discount to members.

**Mission Molding & Wood Specialties**  
**[www.missionmoulding.com](http://www.missionmoulding.com)**

9510 Chesapeake Dr. # 401. San Diego, CA 92123  
Phone: (858) 569-8591  
Hours: 7:30-5:00 M-F, 8:00-1:00 Sat.  
**Bob Hawk, Manager**

The sign inside Mission Molding's door says, "We have one of the largest selections of architectural and decorative moldings in Southern California." Select from more than 300 patterns in a variety of woods as well as polystyrene, fiberglass and primed plastic. The staff of Mission Molding can also supply you with mantels, handrails, balusters, columns and more. Depending on the item, members will get a 5% to 10% discount.

**Packaging Store**  
**[www.gopackagingstore.com](http://www.gopackagingstore.com)**

7848 Silverton, Suite A, San Diego, CA 92128  
Phone (858) 549-7274  
Hours: 9:00-5:00 M-F  
**Peter Wharf, Manager**  
Custom boxes, crating, packaging supplies and shipping. Phone estimates and pick up service available.  
10% discount to SDFWA members

**R. S. Hughes Co. Inc.**  
**[www.rshughes.com](http://www.rshughes.com)**

2575 Pioneer, Ste.102, Vista, CA 92081-8309  
Phone: (760) 579-0222  
Hours: 7:45-5:00 M-F  
**Kurtis Lakhani, Manager**

San Diego's largest inventory of 3M abrasives, adhesives, safety equipment and more. Phone orders/estimates. UPS shipping or walk in service available. 10% discount to members.

**Rockler Woodworking and Hardware**  
**[www.rockler.com](http://www.rockler.com)**

8199 Clairemont Mesa Blvd. San Diego, CA 92111  
Phone: (858) 268-1005  
Hours: 9:00-6:00 M-F, 9:00-5:00 Sat., 11:00-4:00 Sun.  
**Mike Durlak, Manager**

Rockler is an excellent source for hard to find hardware and accessories. Manager Mike Durlak and his staff can help you with good selection of hardware, exotic hardwoods, veneers, inlays, specialty moldings, fine woodworking hand tools, an impressive array of finishing materials, a great selection of books and plans, and weekly workshops in many disciplines. Visit this great woodworking source next time you need that special item no one else seems to have. Catalogues are available. 10% discount on general purchases (except power tools).

**Russ Filbeck, Master Chair Maker**  
**[www.russfilbeck.com](http://www.russfilbeck.com)**  
**E-mail: [rcfilbeck@aol.com](mailto:rcfilbeck@aol.com)**

Make your own heirloom quality chair.  
Chair styles include Appalachian Ladder Back and Windsor chairs. All materials, tools and instruction provided. Class size is limited to two students. Use the web site, e-mail or call Russ to schedule your class.  
10% discount for SDFWA members on the Two-Slat Ladder Back or Sack Back Windsor chair class.

**Shellac Finishes**  
**[www.shellacfinishes.biz](http://www.shellacfinishes.biz)**  
**Email [sales@shellacfinishes.biz](mailto:sales@shellacfinishes.biz)**  
**Vijay Velji, Proprietor**

Internet only. Shipped USPS  
De-Waxed Shellac Flakes for classical woodworkers at very competitive prices.  
SDFWA members must enter coupon code 1010 during checkout to receive a 10% discount

**Signature Medallions**  
**<http://signaturemedallions.com/>**  
Phone: (619) 303-2876  
Feel free to call with questions  
Email [pinz711@aol.com](mailto:pinz711@aol.com)  
**Gary Anderson, Proprietor**

The Signature Medallions (a division of the company that does SDFWA membership pins) come in any size, shape, finish, or color. They are a very professional way to "sign" your work. SDFWA members get a 20% discount; Board members and Committee Chairs 40%. Gary will draw up a design for free, no obligation.

**San Marcos Hardwood Lumber Co**  
[www.SanMarcosLumber.com](http://www.SanMarcosLumber.com)

1415 Descanso Ave, San Marcos, CA 92069  
Phone (760) 471-7777  
Hours: Mon – Fri 6 AM to 4:30 PM, Saturday 8 AM - Noon

**Don Widders, Manager**

San Marcos Hardwood Lumber Co stocks a large selection of Domestic and Exotic Hardwood Lumber, Hardwood Plywood, Veneers, Live Edge Urban Lumber and Slabs, High-Pressure Laminates, Cabinet Hardware, Drawer Slides, Hinges, Saw Blades, Router Bits, Glues, and just about everything fine woodworkers and the furniture and cabinet industry require. Will-call and/or same day delivery available. Special orders are welcome. Don and his knowledgeable staff can help you choose the right material for your next project. Contractor discount to SDFWA members.

**Strata Forest Products**  
[www.strataforest.com](http://www.strataforest.com)

165 Denny Way, El Cajon, CA 92020  
Phone: (619) 449-9663  
Hours: 7:00-4:00 Mon.-Sat.

**Bob Evans & Jack Griede Proprietors**

Strata Forest Products is a diversified company specializing in hardwood lumber, panel products and moldings. With years of experience, we have been serving design firms, architects, cabinet shops and the furniture industry in all their hardwood needs. From our wide range of hardwood species, to our custom knife grinding facilities, we have both the skills and tools to turn unique designs into reality. Contractor discount to SDFWA members.

**Tropical Exotic Hardwoods of Latin America**  
[www.anexotichardwood.com](http://www.anexotichardwood.com)

2270 Camino Vida Roble, Suite "B", Carlsbad, Ca. 92011  
Phone: (760) 434-3030, Fax: (760) 434-5423  
Hours: 8:30-4:30 M-F, 9:30-1:00 Sat.

**Mitch Talcove, Owner/ Manager**

Specializing in a wide selection, varieties, sizes, and shapes of Exotic Hardwoods from Latin America. 10% off all purchases with valid SDFWA card (cash or check preferred if SDFWA is being applied).

**Toolmart, Inc.**  
[www.toolmarts.com](http://www.toolmarts.com)

2750 Auto Park Way #13, Escondido, CA 92029  
1.800-735-8665 , (760) 480-1444 (Direct),  
(760) 747-2626 (Fax) [purchasing@toolmarts.com](mailto:purchasing@toolmarts.com)  
**Eric House, General Manager**

Discount tool store and authorized repair center.  
Contractor discount to members.

**Vac-U-Clamp**

[www.vac-u-clamp.com](http://www.vac-u-clamp.com)  
Email: [barney@vac-u-clamp.com](mailto:barney@vac-u-clamp.com)  
4149 Avenida de la Plata, Oceanside, CA 92056  
Toll-free Phone (888) 342-8262, Fax: (888) 357-4244  
**Barney Rigney, Owner**

Vac-U-Clamp is the leader in vacuum forming and vacuum laminating technologies. We have a full line of vacuum presses, pumps, materials, and adhesives. Vac-U-Clamp is your single source for all vacuum forming and vacuum laminating products. 10% discount to SDFWA members.

**Woodworker West**  
[www.woodwest.com](http://www.woodwest.com)

P.O. Box 452058, Los Angeles, CA 90045  
Phone: (310) 216-9265 Fax: (310) 216-9274  
E-mail: [editor@woodwest.com](mailto:editor@woodwest.com)  
**Ron Goldman, publisher**

Published bi-monthly to promote craftsmanship in woodworking throughout the western U.S. Discount subscription rate to SDFWA members. \$10 for one year and \$18 for two year. When applying, after your name add SDFWA member and your member number.

Please check the website





**Non-Profit Org.  
U.S. Postage Paid  
Permit 697  
San Diego, CA**

**ADDRESS SERVICE REQUESTED**

**Next meeting: 7 pm, Wednesday, March 30<sup>th</sup>, 2016 at the Al Bahr Temple**

