



San Diego Fine Woodworkers Association

Volume 31
Issue 5
July 2012

HARDWOOD GAZETTE

July Program: The Business of Woodworking



Brett Hesser of Hesser Handcrafted will talk at the July meeting on the business of woodworking along with promoting and selling your work. Brett has built a very successful custom production shop in downtown San Diego that makes one of a kind furniture for clients all over the world. He has built this up from a one man shop to

about 10 employees and continues to be successful even through this economy. His specialty is modern veneer designs that are produced from his vast inventory of exotic veneers.

Brett builds and presses his own sheet goods from these veneers and offers custom sheets to the community for your own projects. I usually buy 10-15 custom laminations a year from him for my own work.

Del Cover, Program Chairman

Raffle!



We're holding a raffle at the next meeting! Here's the items that will be up for grabs. Come early to check them out and snatch up your tickets! Remember, the more tickets you buy, the better your chances to WIN!!

- | | |
|------------------------------------|---------------------------------|
| 1 16 Gallon Shop Vac | 6 Buck Bros. 6 Piece Chisel Set |
| 2 Black & Decker 20v Lithium Drill | 7 Starrett 6 inch Square |
| 3 Porter Cable Sander | 8 Gyokucho Dovetail Saw |
| 4 Verita Gents Saw | 9 Kreg Jig |
| 5 Lie Nielsen Block Plane | 10 Surprise Bag |

Mark Your Calendar



Next Meeting	Al Bahr Temple 5540 Kerny Mesa Rd, San Diego, 92111	July 25, 2012 7:00 PM
New Member Workshop*	Russ Filbeck 11088 Delphinus Way, San Diego, 92126	June 3, 2012 9:00 AM - Noon
Design in Wood: Out of this World	Del Mar Fair Grounds 2260 Jimmy Durante Blvd, Del Mar, CA 92014	June 8— July 4, 2012

In this issue:

July Program	1
From the President	2
Monthly Reports	3
Design in Wood Awards	4
DIW Chairman Message	5
Thank you Letters	6
In the Community	7
Scholarship Winners!	8
New Lumber	9
Resources & Sponsors	12
Woodchips	15

Special points of interest:

- DIW was, once again, a HUGE success! Check out the first place winners on page 4 and Bob's message on page 5!
- We're making up for lost time! Check out the Thank you letters and BSA Fair pictures on pages 6 & 7.

From the President



Thank you to all the volunteers for taking time out of your summer to make Design in Wood show another great success! I can't express how thankful I am. I would also like to thank to Bob Stevenson and the DIW staff for putting together another stellar show... it was Out of This World!!!! There is a volunteer who most of us never see, but does an enormous amount of work and deserves special recognition - Janet Stevenson. There are people who work behind the scenes, and then there is Janet. She works behind the person who works behind the scenes. I don't know the exact scope of Janet's work (I think it classified TOP SECRET!), but I do know her involvement is a never ending devotion not only to the DIW show, but to Bob as well. Thank you Janet! Now that everything is put back into storage and the dust is almost settled its time for a break; everyone deserves it.

Speaking of DIW, Bob Stevenson has announced that he will be passing the torch as the show Coordinator in two years. The two year time frame will allow a good turnover from Bob to our next show coordinator. The show coordinator is a paid position and you are actually an employee of the state. If you are interested in the position please contact me or any of the Board of Directors or Chair Members.

Our annual elections are right around the corner! Due to the four year term limit written in our bylaws, this will be my last year as President. I just wanted to get that information out to everyone in order to give you enough time to think about running for President or for any of the other elected board positions for that matter. Being an active part of what goes on in the association is a good place to be.

Now that the fair is over, we can start our Mentor Program back up and get that ball rolling again. If you're interested in hosting an event at your shop, teaching a specific topic or have an idea for one, please contact Ed Gladney or any of our board members. The Mentor Program is one of the biggest benefits to our association. We have some of the most talented woodworkers not only in the country, but in the world.....and I mean that literally!

The vast wealth of knowledge held within our membership is absolutely amazing and for the most part, it goes untapped. We don't know what you want, unless you make the request. We can set up just about any type of class; we just need member requests and people to show up. Please!!! Get the information to Ed or our board members.

Again, thank you to all the members who have volunteered. You make the association what it is today! Enjoy the rest of your summer.

Robert Threm: sdfwapresident@cox.net 619 993-8207

Volunteer - Would you like to help?

Volunteering is generally considered an altruistic activity, intended to promote good or improve human quality of life. It is considered as serving the society through own interest, personal skills or learning, which in return produces a feeling of self-worth and respect, instead of money. Volunteering is also famous for the skill development, to socialize and to have fun. It is also intended to make contacts for possible employment or for a variety of other reasons. Volunteering takes many forms, and can be performed by anyone with own set of skills.

If you would like to volunteer in any capacity, please email me directly so we can set up a time to talk and see how your skills can help. THANK YOU VERY MUCH!! If interested, please contact Robert Threm at:

Email: sdfwapresident@cox.net Phone: 619-993-8207

Publicity Chairman

We are looking for someone to fill the position of Publicity Chairman. If you want to help the SDFWA get recognized out on town or in the media, we could use your help. Please have some background in the publicity or advertising field, computer experience and the willingness to help promote the SDFWA in the way it deserves. If interested, please contact Robert Threm at:

Email: sdfwapresident@cox.net Phone: 619-993-8207

Monthly Reports

Toy Report			Toy Report		
35	Butterfly	Jerry's Toy Group	60	Cars	Al Buffington
54	Cars & Trucks	Chuck Goldsmith	10	Winged Birds	John Benbow
133	Power Tops	Jerry's Toy Group	15	Animals/ Books	Jamie & Dera Little
60	Cars	George Byrne	Cutouts & Memory Boxes		
10	Cars	Paul Trebbien	Cutouts		Memory Boxes
6	Baby Bed Sets	Barbara Moyer (Texas)	250	Ron Poston Group	None



Our Toy production total for this period was 383 and 1347 for the year. Please help out by providing some time to build toys for the boys & girls.

Roger Solheid, Chairman

Email: rsolheid@sbcglobal.net Phone: 858-279-1140



We need your helping hand. Please help to take some of the pain & boredom out of the boys & girls hospital stay. Please see Al De Vries for wood & plans.

Al De Vries, Chairman

Email: alfreddev@hotmail.com Phone: 619-440-6598



Membership

SDFWA currently has 884 members with an additional 335 spousal members. 565 of you receive an email letting you know when the current newsletter is available on the website, while 319 of you receive

a printed copy of the newsletter.

For the first time, our membership application form offers a two-year option. While there is no savings, it helps those who do not want a lapse in membership. Twenty

five of you have already signed up for 2013 by choosing the two-year option now available on the membership application. It is never too early to sign up for next year. I will accept your application at anytime. Anyone who has paid for their 2013 membership prior to Dec 31, 2012, will get their cards laminated. I will send them out in December or early January.

Thanks for renewing your membership.

Sia McGown, SDFWA Membership Chairman



New Member Workshop

For all new members attending the July 25th meeting. Russ Filbeck is hosting his New Member Workshop on Sunday, July 29th from 9:00 AM - Noon.

Russ will talk about and demonstrate how to build two

different types of shop stools; One in the Windsor style, one in the ladder back style.

The workshop is for new members only attending the General Meeting.

Please RSVP to Russ at: rcfilbeck@aol.com or call him at 858-566-9699 if you are interested in attending.

Design in Wood: Awards

DESIGN IN WOOD: Awards

The 31st Annual Design in Wood Exhibition was a huge success, with 348 entries from 202 artisans. Here is the list of the 1st place winners. Go to our website to see all of the pictures and the complete list of prize winners.

Contemporary Woodworking - Furniture

Michael Singer - Corner Jewelry Cabinet. Mahogany, Maple, Ebony



Contemporary Woodworking - Accessories

Tom Thorton - Drawer box. Canary, Maple, Pau Amarillo, Purpleheart, Wenge

Traditional Woodworking - Furniture

Bill Bradford - Biedermeier Commode. Spalted Maple Veneer, Thuya Burl Veneer



Traditional Woodworking - Accessories

Richard Henderson - Aleutian Style Strip Built Sea Kayak. Reclaimed Redwood, Pine, Various Exotics



Art Furniture

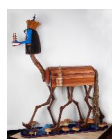
Paul Henry - Gueridon Lila. Basswood, Myrtle Burl

Furniture Designed & Executed by Computer

"Twist & Shout" - Spiriling Desk Lamp. Spalted Elm, Walnut

Made for Children

Mike McElhiney - "Grinnus Hexapedus Saturnicus" - Six Legged Creature from Saturn Come to Earth to Spread Goodwill. Manzanita, Sapele, Walnut



Model Building - Scale

Joe Bompensiero - S/V San Salvador. Holly, Cherry

Model Building - Not to Scale

Virgil R. Krueger - "Conflict Resolution - 1804" - 2 Dueling Pistols. Rosewood, Ipe, Osage Orange

Musical Instruments

Nathan Anderson - Acoustic Guitar. Ziricote, Redwood, Hawaiian Koa, African Ebony, Khaya Mahogany

Clocks

Mike McElhiney - "Time is Relative" - Antique Clock Works. Maple, Bubinga

Veneering/Marquetry - Furniture

Craig Thibodeau - Oak Leaves & Acorns Cabinet. Reclaimed Claro Walnut, Curly Maple, Birdseye Maple



Veneering/Marquetry - Art

Patrice Lejeune - Treasure Box - Painting in Wood. Ebony, 22 other hardwood species.

Wood Turning - Face Work: Perpendicular

Pete Campbell - "Tooth-In" Vessel. Buckeye

Wood Turning - Center Work: Parallel

Mike Jackofsky - Hollow Form Set of 3. Masur Birch

Wood Turning - Embellished/Mixed Media

Frank Andrews - "Ready for Liftoff" Hollow Form. Marblewood, Ebony, Holly, Maple.



Wood Turning - Laminated/Segmented

Ken Cowell - "Three Doves" - Lidded Vessel. Curly Maple, Ebony, Carlina, Cherry burl.

Wood Carving - Animals

William M. Churchill, Jr. - Impala Crossing. Walnut, Poplar

Wood Carving - Birds

Joe Satake - Pintail. Tupelo

Wood Carving - Marine Animals

Bob Berry - Apache Trout. Jelutong, Birdseye Maple, Walnut.



Wood Carving - Open

Maigurs Knets - Sarracenia Dancer - Sculptured Flower on a Base. Pink Ivory, Spalted Scottish Beach

Scroll Saw - Intarsia

Jeff Herring - "The Overland Trail" - Indians attacking the stagecoach. Wenge, Walnut, Pine, Buckeye Burl, Redwood, etc.



Scroll Saw - Fretwork

Bill Goldschneider - Morning at the Pond. Maple.

Design in Wood: Message from the Chairman



The 31st Annual Design in Wood Exhibition has been put to bed for another year. With all the complements that came my way, I would say we had a very successful run.

We had 348 entries from 202 entrants. In addition to all the money awards which totaled over \$22,000, we gave out 99 Honorable Mention Awards. This shows that the level of workmanship continues to improve and the level of competition is reaching new highs. I particularly enjoyed the wide variety of the pieces with many classes increasing in number of entries. The response to our Theme Decoration efforts was great and Design in Wood earned a "Best of Show" for the theme decoration contest between the different Fair exhibit departments. Even the crowds were immense this year. The total number of Fair attendees exceeded 1.5 million people. Sometimes the exhibit was so crowded that people couldn't really appreciate the wonderful display of pieces.



I want to thank all the volunteers who assisted us this year. The set up went very well. The volunteers who helped with crowd control and passed out "People's Choice" ballots need to be commended for their efforts. This year we broke voting records for the "People's Choice" awards. First place went to Richard Henderson's Kayak (pictured here); Second place went to Ray Perkett's "York Minster Cathedral"; Third place went to Alex Chitura's Elephant carving.

Give back day and take down days were a little hectic with only a couple of volunteers. A great big thank you to Jean and Deb Andrew, Lucas (Martin Ruch's grandson), Lynn Rybarczyk, Bob & Liane Futch, Harry Baldwin, and Bob Coates for your help with take down.

My staff, Ron Rossi, Martin Ruch, Ed Gladney, Sharon Pierce, Beryl & Tom Johnson, Carl Drake, Doug Parker, Dale Stauffer, Don Spangler, Jeff Bratt, Bob Bostick, and George Lattuca are to be applauded for working under extreme conditions and picking up the slack when things got real hectic.

I want to thank all who participated in making the exhibit a complete success- from the guilds who participated with demonstrations, to the members who manned the shop and gallery floor, to all of the folks who entered their pieces. I wish to personally thank the SDFWA Board for their support.

Please enjoy the photographs of the first place winners in this newsletter and check out www.sdfwa.org, Design in Wood, 2012 Photographs for photographs of the major winners taken by Andy Patterson, Lynn Rybarczyk, and

Dave Barnhart. Also check out the SDFWA web site for a copy of the show catalog put together by Rhoda Keegan.

Bob Stevenson

SDFWA, Chairman, Shows & Exhibits

SD County Fair, Coordinator, Design in Wood



Video Library

In addition to the VHS tapes we have previously listed we have been trying to add a series of DVDs to our collection. This is more expensive since according to the library a VHS tape will provide good quality for over 200 viewings while often DVDs do not last 60. With this in mind please try to be careful when handling the DVDs. The DVDs we currently have on hand are listed below.

600 Articles from Fine Woodworking	
The Best of Fine Homebuilding	
Measuring furniture for Reproduction	Phil Lowe
Carve a Ball and Claw Foot	Phil Lowe
Cabriole Legs Simplified	Charles Bender
Incra Jig Tutorial	
Mastering your Bandsaw	Mark Duginske
Build a Hepplewhite Night Stand	
Build a Chippendale Small Chest	
Traditional Molding Techniques	Don McConnell
Build a Shaker Table	Kelly Mahler
Refinishing Furniture	Bob Flexner
The Essential Guide to Wood finishing	Bruce Johnson
Hand Applied Finishes	Jeff Jewitt
Wood Finishing Basics	
Guilding and Chemical Patinations	David Marks & Grace Baggot
17 th Century New England Carving	Peter Follanshee
Precision Shooting Simplified	David Charles-
Repairing Furniture	Bob Flexner
Drawknives, Spokeshaves, and Traversers	Brian Boggs
Cabinets	Andy Rae

Thank You & Acknowledgements

"I would like to acknowledge a couple of the people involved in the photo shoot who made it happen for our website and various wood magazines. First is Andy Patterson- master photographer. The second is David Barnhart



-The man who sheds light on things. I couldn't get myself in because I

was too busy moving lights, etc... It is nice to



see people involved, see what happens behind the scenes of things, and know what opportunities they have to get involved."

Lynn Rybarczyk

Thank you from the National Foundation for Autism Research (NFAR)

"Dear San Diego Fine Woodworkers Association, "From all of us at NFAR, we would like to thank you for your support of the upcoming NFAR Family Picnic. The children will really appreciate the wonderful toys you have created.

"We realize you have many choices when it comes to giving of your time and talent. Thank you for choosing the families of NFAR and this cause as the recipient of your generosity.

"Please know that at NFAR our focus is on helping San Diego children with autism by creating and expanding programs, promoting early identification and outreach to underserved populations, and providing for the needs of students at the classroom level.

"Thank you again. Your support is greatly appreciated!"

Best Regards,
Mariana Farrell
Board Member
National Foundation for Autism Research

“Dear SDFWA;

“Thank you for your recent donation of toys and for the support to Mental Health Systems (MHS), Peer2Peer Lines. We are grateful you have responded to our need with such compassion and generosity.

“Thanks to your donation, we will be able to help children and families throughout San Diego County. Generous donations, like yours, will bring happiness to many children. Each year, MHS helps thousands of individuals and their families. Many of these people are children and families living with mental illness, experiencing homelessness, unemployment and other challenges.

“Due to the ongoing support we receive from people like you, MHS is better able to serve families in need. We want to extend our appreciation for your support and donation. We hope we can continue to show you that we value your support.

“We hope you remain involved with Mental Health Systems, and that you continue to be a partner in our mission to help San Diegans in need. You have my deepest thanks for helping us bring help and hope to so many.

“With Sincere Appreciation,

Veronica Aguilar, MS
Program Manager
MHS Peer2Peer Lines”

SDFWA in the Community

As most of you know, SDFWA is constantly volunteering time and resources to worthy causes throughout San Diego County. Four SDFWA members had the opportunity to engage young Boy Scouts in woodworking at the Boy Scout Fair held at Qualcomm Stadium on Saturday, April 21. The members are Roger Solheid, Charlie Bierman, Terry Stolzoff and Chuck Luebbers. The annual day-long fair is quite large with many booths showcasing Boy Scout activities and other fun things to do, including a chili cook-off and a trebuchet that tossed water balloons.

Three one-hour sessions were held with 20 boys each. The project to be made was a high-speed spinning top.

Charlie Bierman supervised boys using the drill press to cut a hole in the handle. Roger Solheid and Chuck Luebbers guided the boys in cutting out their “handle” from a block of wood on the jigsaw. Terry Stolzoff showed the boys how to sand the parts and put everything together, including winding the string tightly to get a fantastic spinning top!

The booth was a big hit with the boys, as the sign-up list filled up quickly. Many of the 60 boys have never had the chance to actually use woodworking machinery. Both the men and boys enjoyed themselves, and the boys seemed quite pleased with their tops.



Scholarship Winners

We are pleased to announce the scholarship winners for this year. These were awarded at the fair last month and each of their works were displayed in the Student Showcase. Congratulations to all of the winners & keep up the great wood-working!

High School Winners;



Jade Wiley - Francis Parker School



Eli Ayub - San Pasqual High



Rudy Juarez - San Marcos

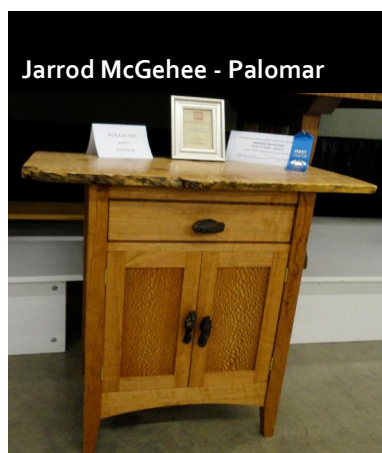
College Winners;



Shawn Plaxco - Palomar



Beston Barnett - Palomar



Jarrold McGehee - Palomar



Steve Kinkead - Palomar

New Lumber

Editors note: This month's article comes from the web, www.familyhandyman.com and provides tips and tricks for the table saw. You can see the original article at: <http://www.familyhandyman.com/DIY-Projects/Woodworking/Woodworking-Tools/table-saw-tips-and-tricks/View-All>

Table Saw Tips & Tricks:

Tip 1: Use featherboards for an extra set of hands



Featherboards help keep boards straight

Use featherboards to hold wood against the fence for a straight cut.

When it's tough to keep a board aligned with the fence, pull out a featherboard for smooth, straight cuts. Featherboards have a series of wooden "fingers" that hold wood tightly against the saw fence.

The fingers are slightly flexible and cut at an angle, so they allow you to push the wood through while maintaining firm, even pressure. They also dig in and hold wood in place if it starts to kick back. They're a great "third hand" when you want the perfect rip. Just push the featherboard firmly against the piece of wood 1 to 3 in. before the saw blade, then clamp it tightly to the saw table.

It should be fairly easy to push the wood forward but hard to pull it back. And when you're ripping large boards, add a second clamp for extra-firm pressure.

Make your own featherboards from a 2-ft. length of knot-free 1x4. Cut one end at 45 degrees. Then cut a series of 4-in.-long kerfs every 1/8 to 1/4 in. (narrower on stiff hardwoods, wider on softwoods)—thin enough so the long fingers flex slightly.

Tip 2: Setup a simple outfeed support



An outfeed table supports long boards

Use an outfeed support when ripping long boards.

Trying to rip the last few feet of a long board without a

helper or support at the other end is virtually impossible. An expensive roller support can solve the problem. But if you don't have one, set up a temporary outfeed support with clamps, two 2x4s and plywood. The 2x4s clamped to the saw table keep the plywood perfectly in line with the table surface. The boards you're cutting will slide onto the support without getting stuck.

To construct a temporary outfeed table, clamp two 8-ft.-long 2x4s to the saw table, cantilevering them approximately 5 ft. over the outfeed side. Then screw or clamp 1/4-in. plywood to the underside of the 2x4s.

Keep in mind that this works only with contractor-size and larger table saws with heavy steel or iron tables. It could cause lighter bench-top saws to tip or bend.

Tip 3: Add a fence to the miter gauge for smoother crosscuts



Attach the fence

Fasten a straight piece of wood to the miter gauge

The narrow width of most miter gauges offers poor support when you're crosscutting, especially when you're cutting at an angle. For better support, screw a wood fence to the miter gauge. (Most gauges have holes for this purpose.)

Use a straight 1x3 or 1x4, and make it high enough so that the blade won't cut it completely off. Then it's easy to add a removable stop block for making multiple cuts or change the angle and make miter cuts with the same fence. However, always double-check the accuracy of the miter gauge with a square or protractor before making any cuts.

To avoid binding and kickbacks when you're cutting, always push the workpiece and fence completely past the blade. Then turn the saw off before pulling the fence back and removing newly cut pieces.

Tip 4: Clamp a long fence for Long boards



Use a long fence

Attach a level or long board to the fence to guide long boards.

Keeping a long, heavy board or a full sheet of plywood tight against a short fence is a challenge, especially when you work alone. It's all too easy for the wood to wander away from the fence, ruining the cut or causing the blade to bind and leave burn marks along the edge. To avoid these problems, clamp a long level or a long, straight board to the fence. The longer the fence, the easier it is to keep the wood firmly against it.

Tip 5: Use a half fence for complicated grain

Clamp thin wood to the fence.



Place 3/4 in. lumber against the fence to keep wavy wood from binding the saw blade.

Wood with knots or wavy grain and wood that has been dried unevenly will often warp badly as you rip it. If the halves bend outward, one will push against the fence and cause burn marks, a kickback or an uneven cut.

If this begins to happen, clamp a smooth, straight length of 3/4-in. wood against the fence, ending at the center of the saw blade. This half fence gives the trapped piece (the section between the blade and the fence) room to bend without pushing back against the blade. Keep several push sticks at hand so you can work around the clamps and complete the cut smoothly.

If the two halves bend toward each other as they're being cut—pinching the splitter at the end of the blade guard—turn the saw off and wedge a shim between the two pieces. Then complete the cut.

Tip 6: Save your fingers with push sticks



Use push sticks

Keep several push sticks on hand to feed lumber through the saw blade.

If you find your hand within a foot of the table saw blade, it's time to reach for a push stick. This essential table saw accessory is notched to hook solidly over the end of the board. You can then push it on through and hold it down firmly at the same time. It allows you to complete a perfectly straight cut while keeping your hands well away from the blade.

It's best to keep at least these two styles handy. Use the long, narrow push stick for smaller, lighter boards and for narrower cuts. And use the broad, flat push stick for wider, heavier boards when you need to apply more downward pressure.

As a rule, use 1/2-in. plywood for general-purpose push sticks. It's light and tough and won't split as easily as most solid wood. But don't hesitate to make several different thicknesses and styles to use in special situations. Customize your push sticks with different handles, shallower notches (for 1/4-in. plywood, for instance), or strips of rubber or sandpaper for better grab.

Tip 7: Cut Narrow strips with a sliding jig



Make a sliding Jig

Build a sliding jig by attaching a handle and a strip of wood to a 1x6.

To make a series of identical narrow strips for shelf edging, you don't need to remove the blade guard or move the fence for every cut. Just attach a short strip of wood slightly thinner than the width of the rip cut to the end of a 4-ft. 1x6. Then hold the board against it and push the jig through. The jig keeps your hands well away from the blade, and you can rip as many pieces as you need without ever moving the fence.

To make the jig, attach a 5-in.-long strip of wood, 1/16 in. narrower than the width of the desired rip, to the end of a 1x6 as shown. Basically you're creating a horizontal push stick. Add a handle near the end of the jig to give yourself better control as you run the jig through the saw.

A Word About Blade Guards

There is a persistent myth in the carpentry world that blade guards are difficult to work with, but in our experience, it's simply not true. They slide up easily as the wood goes through, and the blade is clearly visible through the plastic. And they save fingers!

2012 SDFWA Directors & Committees

Directors

President	Robert Threm	619-993-8207	sdfwapresident@cox.net
Vice-President	James LaGrone	858-484-6595	James_lagrone@yahoo.com
Treasurer	Bernie Burke	760-723-0972	bernieburke@roadrunner.com
Secretary	Dick Ugoretz	858-490-6295	rugoretz@yahoo.com
Member at Large	Ed Gladney	858-484-4366	Gladney@san.rr.com

Committees

Email List Manager	Rhoda Keegan	858-278-3632	rhodak@san.rr.com
Historian	Chuck Meacham	858-273-8677	cmeacham@san.rr.com
Magazine & Book Sales	Pat Kowalke	760-489-9804	ppattyk@cox.net
	Ron Posten		
Membership	Sia McGown	619-223-3259	SDFWA.membership@gmail.com
	Leonard Wener	619-222-5521	lenwener@cox.net
	Harry Baldwin	858-278-8718	HarrySDFWA@aol.com
Membership Greeters	Bob Reese	858-695-2460	rtreese@gmail.com
	Doug Parker	619-421-0636	gothamst@sbcglobal.net
Mentor Program	Ed Gladney	858-484-4366	Gladney@san.rr.com
Merchandise	Al De Vries	619-440-6598	alfreddev@hotmail.com
Newsletter	Ross Rehart	760-445-1233	rehartr@yahoo.com
Pro Bono	Jim Vitale	858-623-8630	jamespvitale@yahoo.com
Programs	Del Cover	858-270-7739	del@delcoverwoodworking.com

Committees

Property	Robert Threm	619-993-8207	sdfwapresident@cox.net
	Dale Stauffer	619-561-2202	ddstauffer@cox.net
Publicity	VACANT—HELP NEEDED		
	Don Spangler	858-270-6165	coffeeorganic@hotmail.com
Refreshments	Glen Weischedel	619-588-5477	wishers54@yahoo.com
	Ron Rossi	619-582-9883	ronrossi@cox.net

Resources & Raffle	Jim Strawn	619-887-8090	jlstrawn@cox.net
	Jim Bradbury	858-586-1220	bradburyjp@sbcglobal.net
Scholarships	Russ Filbeck	858-566-9699	rcfilbeck@aol.com
Shop Tours	Dale Stauffer	619-561-2202	ddstauffer@cox.net
Shows & Exhibits	Bob Stevenson	619-422-7338	bobscww@cox.net
Sound Technician	Thomas Johnson	619-281-7170	tejohnson22058@aol.com
Special Events	Ed Gladney	858-484-4366	Gladney@san.rr.com
	Linda Sanders	760-804-1918	lindabsanders@roadrunner.com
Swap Meet	VACANT—HELP NEEDED		
Toy Program	Roger Solheid	858-279-1140	rsolheid@sbcgobal.net
	Terry Stolzoff	619-869-1224	woodycut@gmail.com
	Charlie Bierman	619-276-0048	
Video Library	Bob Reese	858-695-2460	rtreese@gmail.com
Video Technician	Michael Fairbanks	619-465-4972	mkfairdpmm@netscape.net
Wants & Disposals	Bob Coates	619-258-8674	coatesrm@att.net
Web Site	Doug Murphy	619-441-9665	dw-murphy@cox.net

2012 Upcoming Meetings

General Meetings

All meetings will start at 7:00 PM unless otherwise noted below

Al Bahr Temple (Behind the Hampton Inn)
5440 Kearney Mesa Rd., San Diego

July 25th

September 26th
November 28th

Board Meetings

All meetings will start at 7:00 PM unless otherwise noted below

The Hardwood & Hardware Co.
8849 Complex Drive, San Diego

July 11th

September 5th
November 7th

Resources & Sponsors

To receive your discounts, please show your membership card before you make a purchase.

American Furniture Design Co

www.americanfurnituredsgn.com

Phone: (760) 743-6923 (Orders)

Hours: 8:30-4:30 M-F

Email americanfurniture@cox.net

Brian Murphy, Proprietor

125 of the Finest Woodworking Plans, The only supplier of
Daly's Finishing Supplies in San Diego, Hardware, Hand Tools
and Books. SDFWA member Benefits, 15% on all products and
Free Shipping in San Diego County.

Bayside Paint, Inc.

www.baysidepaint.com

Phone (619) 275-7800

Hours: 6:30 – 5:30 M-F, 8 -5 Saturdays

Email: info@baysidepaint.com

1228 Knoxville St., San Diego, CA 92120

Robert Lewis, Manager

Mohawk Finishing Products and many other stains, sealers, fillers and tools. Free delivery with minimum order and UPS shipping available. 10% discount to SDFWA members.

C.A. Brandon Trophy & Awards

www.cabrandonawards.com

Phone: (619) 464-0919

Hours: 7:30-5:00 M-F, 8:00-1:00 Sat.

Email: brandontrophies@aol.com

4007 Citradora Drive, Spring Valley, CA 92123

Cathi Grzeskowiak, Owner

CA Brandon provides engraving and Laser engraving available on a variety of surfaces including metal and plastic plates. We have a large stock to choose from and most custom wood pieces can be laser engraved. Please call before coming in. 10% discount with your current SDFWA membership card.

Craftsman Studio - Woodworking Tools Store

www.CraftsmanStudio.com

Phone: (888) 500-9093

Hours: Mon 10:00-5:00, Tue-Thu 9:00 - 5:00, Closed Fri - Sun

Email: CustomerService@CraftsmanStudio.com

2737 Via Orange Way - Suite 110, Spring Valley, CA 91978

Bill Kohr - Proprietor

Stocking Authorized Dealers for: Lie-Nielsen Toolworks, Auriou, Shapton, DMT, TANOS (Systainers), Veritas, FastCap, Trend Diamond Products, Glen-Drake Toolworks, Czeck Edge Tools, Two Cherries Carving Tools. In-store discount to SDFWA Members on selected products.

Note: web orders ship Mon-Fri.

DeWalt, Porter Cable, & Delta

Factory Service Center

Phone: (858) 279-2012

Hours: 7:30-4:30 M-F

7290 Claremont Mesa Blvd. San Diego, CA 92111

Dave Stelmachowski, Manager

Porter Cable, Delta, DeWalt, Devilbiss, FLEX, Biesemeyer and Oldham Parts, Accessories, Repairs and Reconditioned Tools. Special consideration to SDFWA members.

Environmental Spray Systems

www.espraysystems.com

Phone: (858) 279-7114

Hours: 8:00-5:30 M-F

Email: service@espraysystems.com

7114 Convoy Ct. San Diego, CA 92111

Sam Rinaker, Owner

Specializing in spray finishing equipment. Local distributor for Devilbiss, Graco, Paasche, Accuspray, Ransberg and Gema. 10% discount to SDFWA members.

Fas-N-Go

Phone: (619) 424-4774

Hours: 7:30-5:00 M-F

2260 Main St. Suite 15, Chula Vista CA

Nail guns, brads, staples, nails, plus accessories for nail guns and repair service. Distributor for 3M, Senco, Haubold, Josef Kihlberg, Spotnail, Hitachi, Bostich and Paslode. 10% discount on sales and service.

FixMyBatteries.com

www.fixmybatteries.com

Phone: (760)747-8762

Hours: 9:00 – 5:00 M-F; 9:00 – 1:00 Sat

Email: service@fixmybatteries.com

1291 Simpson Way Suite F, Escondido CA 92029

Josh Zeller, Proprietor, Disabled Veteran Owned and Operated

We rebuild ANY BRAND power tool battery pack. Ours are longer lasting batteries with more power than retail batteries. Higher quality batteries at a fraction of the cost! ** The only rechargeable batteries we do not rebuild are Lithium Ion. 10% discount with your current SDFWA membership card.

Frost Hardwood Lumber

www.frosthardwood.com

Phone: (858) 455-9060 (800) 258-3534

Hours: 7:00-4:30 M-F, 8:00-12:30 Sat.

6565 Miramar Rd. San Diego, CA 92112

Jim Frost, proprietor

They stock a wide variety of domestic and imported hardwoods as well as veneers, laminates and many other supplies for the commercial and hobbyist woodworker. The Frosts (Mr. G. T.,

Bruce and Jim) along with their staff stand ready to serve your woodworking needs. Special SDFWA discount.

TH&H: The Hardwood and Hardware Company

The Woodworkers one stop for Material and Supplies

www.th-h.com

Phone: (858) 536-1800 Fax: (858) 614-1811

Hours: M-F 7:00-5:00, Sat. 9:00-4:00

8849 Complex Dr. San Diego, CA 92123

Tom Drinnon, manager

Hardwood lumber, Moldings, Veneers, Cabinet Hardware, Finishes, Hand Tools and Supplies. Contractor discount to members.

Lane Stanton Vance Lumber

Phone: (619) 442-0821

Hours: 7:00-3:00 M-F

360 Vernon Way, El Cajon, CA 92020

The company carries domestic and imported hardwoods, molding and panel products for cabinetmakers, furniture makers and contractors. Contractor discount to members.

Mission Molding & Wood Specialties

www.missionmoulding.com

Phone: (858) 569-8591

Hours: 7:30-5:00 M-F, 8:00-1:00 Sat.

9510 Chesapeake Dr. # 401. San Diego, CA 92123

Bob Hawk, manager

The sign inside Mission Molding's door says, "We have one of the largest selections of architectural and decorative moldings in Southern California." Select from more than 300 patterns in a variety of woods as well as polystyrene, fiberglass and primed plastic. The staff of Mission Molding can also supply you with mantels, handrails, balusters, columns and more. Depending on the item, SDFWA members will get a 5% to 10% discount.

Packaging Store

www.gopackagingstore.com

Phone: (858) 549-7225, Fax (858) 549-7274

Hours: 9:00-5:00 M-F

7848 Silverton, Suite A, San Diego, CA 92128

Peter Wharf

Custom boxes, crating, packing supplies, and shipping. Phone estimates and pick up service available. 10% discount to SDFWA members.

R. S. Hughes CO. Inc.

www.rshuges.com

Phone: (760) 579-0222

Hours: 7:45-5:00 M-F

1281-B Liberty Way, Vista, CA 92081-8309

Chuck Schweikart, Manager

San Diego's largest inventory of 3m abrasives, adhesives, safety equipment and more. Phone orders/estimates. UPS shipping or walk in service available. 10% discount to members.

Rockler Woodworking and Hardware

www.rockler.com

Phone: (858) 268-1005

Hours: 9:00-6:00 M-F, 9:00-5:00 Sat., 11:00-4:00 Sun.

8199 Claremont Mesa Blvd. San Diego, CA 92111

Mike Durlak, manager

Rockler is an excellent source for hard to find hardware and accessories. Manager Mike Durlak and his staff can help you with good selection of hardware, exotic hardwoods, veneers, inlays, specialty moldings, fine woodworking hand tools, select power tools, an impressive array of finishing materials, a great selection of books and plans, and weekly workshops in many disciplines. Visit this great woodworking source next time you need that special item that no one else seems to have. Catalogues are available. 10% discount on general purchases (except power Tools).

Russ Filbeck, Master Chair Maker

www.russfilbeck.com

Phone: (858) 566-9699

Email: rcfilbeck@aol.com

Make your own heirloom quality chair. Chair styles include Appalachian Ladder Back and Windsor chairs. All materials, tools and instruction provided. Class size is limited to two students. 10% discount for SDFWA members on the Two-Slat Ladder Back or Sack Back Windsor chair class. Use the web site, e-mail or call Russ to schedule your class.

Shellac Finishes

www.shellacfinishes.biz

Email: sales@shellacfinishes.biz

Vijay Velji, Proprietor

Internet only. Shipped USPS

De-Waxed Shellac Flakes for classical woodworkers at very competitive prices.

SDFWA members must enter coupon code 1010 during check-out to receive a 10% discount

Tropical Exotic Hardwoods of Latin America

www.anexotichardwood.com

Hours: Mon. -Fri. 8:30 to 4:30, Sat. 9:30 - 1:00

Phone: (760) 434-3030, Fax: (760) 434-5423

2270 Camino Vida Roble, Suite "B", Carlsbad, Ca. 92012

Mitch Talcove, Owner manager

Specializing in a wide selection, varieties, sizes, and shapes of Exotic Hardwoods from Latin America.

10% off all purchases with valid SDFWA card. (cash or check preferred if SDFWA discount is being applied)

Tool Depot

Phone: (619) 220-7111

Hours: 7:00-6:00 M-F, 9:00-5:00 Sat.

3799 Gaines St, San Diego, CA 92110

Bob Welte

Tool Depot offers fine high quality woodworking tools from around the world and a knowledgeable service orientated staff. New and used tools and equipment sold and traded. Tool repair and sharpening services are also available. 10% discount on hand tools and accessories

Toolmart, Inc.

www.toolmarts.com

Phone: (760) 480-1444, Fax (760) 747-2626

Hours: 7:00-5:30 M-F, 7:00-4:00 Sat.

2750 Auto Park Way, Escondido, CA 92029-1030

Jeff McCreary, manager

Discount tool store and authorized repair center.
10% discount to members on accessories.

Woodworker West

www.woodwest.com

P.O. Box 452058, Los Angeles, CA 90045

Phone: (310) 216-9265 Fax: (310) 216-9274

Email: editor@woodwest.com

Ron Goldman, publisher

Published bi monthly to promote craftsmanship in woodworking throughout the western U.S. Discount subscription rate to SDFWA members. \$10 for one year and \$18 for two years.

Woodchips

What tools are REALLY used for

By Rhoda Keegan



DRILL PRESS: A tall upright machine useful for suddenly snatching flat stock out of your hands so that it smacks you in the chest and flings your beer across the room, denting the freshly-painted project which you had carefully set in the

corner where nothing could get to it.

SKILL SAW: A portable cutting tool used to make studs too short.

BELT SANDER: An electric sanding tool commonly used to convert minor touch-up jobs into major refinishing jobs.

HACKSAW: One of a family of cutting tools built on the Ouija board principle... It transforms human energy into a

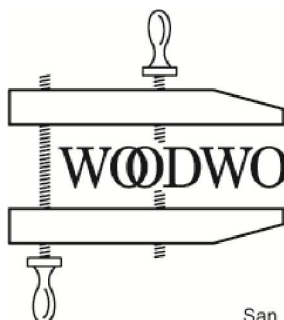
crooked, unpredictable motion; and the more you attempt to influence its course, the more dismal your future becomes.

TABLE SAW: A large stationary power tool commonly used to launch wood projectiles for testing wall integrity.

BAND SAW: A large stationary power saw primarily used by most shops to cut good stock into smaller pieces that more easily fit into the trash can after you cut on the inside of the line instead of the outside edge.

PRY BAR: A tool used to crumple the head of a nail you needed to remove in order to replace a 50 cent part.

HAMMER: Originally employed as a weapon of war, the hammer nowadays is used as a kind of divining rod to locate the most expensive parts adjacent the object we are trying to hit. It is especially valuable at being able to find the EXACT location of the thumb or index finger of the other hand.



SAN DIEGO
**FINE
WOODWORKERS**
ASSOCIATION

P.O. Box 82323
San Diego CA 92138-2323

RETURN SERVICE REQUESTED

Non-Profit Org.
U.S. Postage Paid
Permit 697
San Diego, CA

We're on the Web!
<http://www.sdfwa.org>

Mailing Label

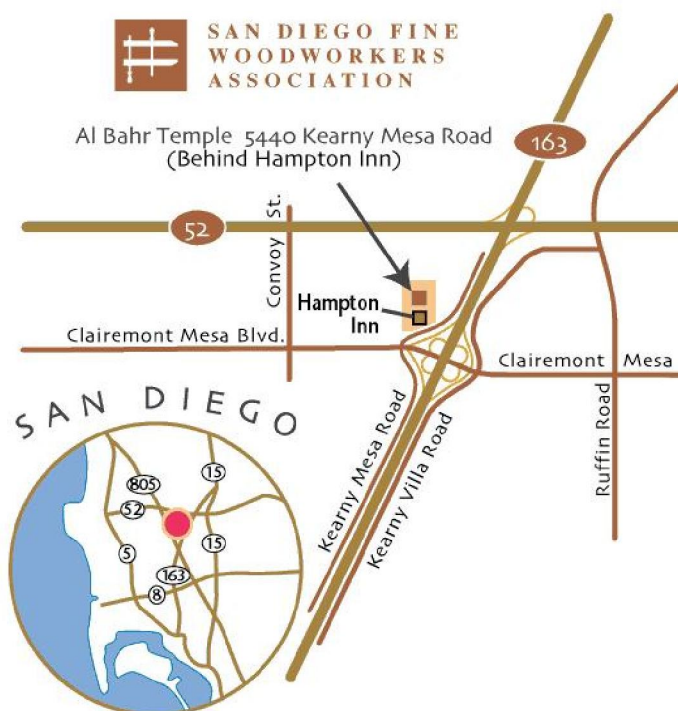
Next meeting: 7:00 pm, Wednesday, July 25th, 2012 at the Al Bahr Temple

MONTHLY MEETINGS



SAN DIEGO FINE
WOODWORKERS
ASSOCIATION

Al Bahr Temple 5440 Kearny Mesa Road
(Behind Hampton Inn)



VIDEO LOAN REQUEST

I wish to borrow one of the following videotapes and agree to return it within seven (7) days of my receipt of it. A postpaid return label and an order form are enclosed. I understand that a late return charge of \$1 per day may be assessed and that I am responsible for replacement of the tape if it is damaged or lost while in my custody. If your first choice is not available, you will receive your second choice.

Enclosed is \$3.50 to cover postage and handling. My choices are:

(1) _____ (2) _____

NAME: _____ PHONE: _____ Email _____

ADDRESS: _____ CITY _____ STATE _____ ZIP CODE _____

SIGNATURE: _____

Make checks payable to SDFWA. Mail to SDFWA LIBRARY, c/o R. T. Reese 10886 Aviary Court, San Diego, CA 92131

858-695-2460 rtreese@gmail.com

San Diego Fine Woodworkers Association Membership Application

Print Clearly

Date: ____/____/____

☐ **NEW** Where did you hear about us? _____

☐ **RENEWAL**

Name: _____

First

Middle

Last

I would like a membership card for my spouse: _____

Name

Mailing Address: _____

City: _____ State _____ Zip Code (9 digits) _____ - _____

Telephone: (____) _____ - _____

E-Mail Address: _____

Your information will only be shared within this Association and on a need-to-know basis.

You will receive your newsletter via the SDFWA website unless you indicate otherwise.

You will be notified when the newsletter is available on the website at www.SDFWA.org.

I would like to receive my newsletter By U.S. mail _____

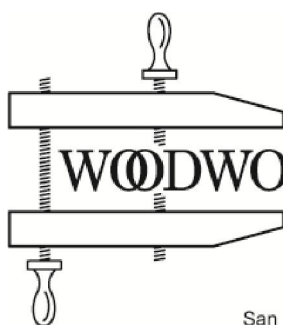
☐ **\$30 dues for one-calendar year membership**

☐ **\$60 dues for two-calendar year membership**

Mail form and payment to: SDFWA P.O. Box 82323 San Diego, CA 92138-2323

Place
Stamp
Here

We're on the Web!
<http://www.sdfwa.org>



SAN DIEGO
FINE
WOODWORKERS
ASSOCIATION

P.O. Box 82323
San Diego CA 92138-2323

Fold Along Line