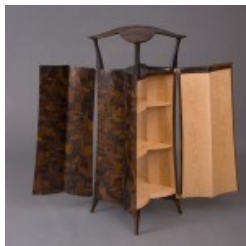


## San Diego Fine Woodworkers Association

Volume 31  
Issue 4  
May 2012

# HARDWOOD GAZETTE

## May Program: The Work & Techniques of Brian Newell



Brian Newell, last years "Best of Show" winner at the Design in Wood Show, will be our featured speaker. Brian will be talking about his work, his incredible portfolio, and techniques that he uses in producing his studio furniture. His piece last year with the Ebony Wall Cabinet. Brian originally studied with James

Krenov, then worked as a pattern maker before starting a shop in Chicago. He latter moved to Japan where he opened a shop that he still keeps, but has also set up a shop in Fort Bragg, Calif. Here he produces his designs and has a school that teaches wood bending, pierced carving techniques and router inlay. You can review his work at his website:

<http://briannnewellfurniture.com/>

Del Cover, Program Chairman

### Design in Wood

#### Special Note

#### Did you have anything to do with putting a man in space?

This year at the Design in Wood Exhibition, in keeping with the Fair Theme - "Out of This World" - we are planning a rather unique tribute to America's Manned Space Program. We would like to salute our own members who contributed to the space effort with a "members honor roll." If you worked for NASA or any other company who provided support to the U.S. Manned Space Program, no matter how remote, even if it was a sub, sub-contractor, we are

interested in knowing who you are and briefly what you did. Please let me know of your involvement in an email or phone call so we can include you in our salute. We need to get this completed fairly soon so don't be bashful. If you know of any past members who deserve to be on the honor roll, let me know of them also. I need all information for this "members honor roll" by May 22 because I have a meeting at the Fairgrounds on May 23 when I have to turn in the information so the Fair can make us a poster.

Thanks,

Bob Stevenson [bobscww@cox.net](mailto:bobscww@cox.net)  
619-422-4338-h or 619-253-7338-c

#### In this issue:

May Program	1
From the President	2
Monthly Reports	3
Design in Wood	4
New Lumber	5
Sawdust	6
Directors & Committees	7
Sponsors & Resources	8
Woodchips	11

#### Special points of interest:

- Design in Wood would like to know if you have ever had anything to do with putting a man in space! See the special note on page 1
- We need Volunteers for the DIW show. See page 4
- Check out "New Lumber: Torsion Boxes from our friends at the BAWA on page 5.

## Mark Your Calendar



Next Meeting	Al Bahr Temple 5540 Kerny Mesa Rd, San Diego, 92111	May 30, 2012 7:00 PM
New Member Workshop*	Russ Filbeck 11088 Delphinus Way, San Diego, 92126	June 3, 2012 9:00 AM - Noon
Design in Wood: Out of this World	Del Mar Fair Grounds 2260 Jimmy Durante Blvd, Del Mar, CA 92014	June 8— July 4, 2012

\* For new members attending the May meeting only

## From the President



Hello everyone,

Well.... We held the last Design in Wood meeting on Saturday, May 5<sup>th</sup> at Chuck Anderson's house and things are moving along very smoothly, even without a traditional Cinco De Mayo Margarita. The only thing that is out of the ordinary is the fact that we are very short on volunteers for the DIW show. We need the support of a large percentage of the association to fulfill the needs at the most popular event that the association holds. I can't think of a better time to support the association and the community by volunteering for a few shifts at the Design in Wood show. One of the best parts about volunteering – you don't need any experience. This is a great opportunity to learn how to use hand tools that you don't see every day. For every shift you work, you will receive tickets for the fair.

I had the opportunity to visit Hilltop Middle school to see one of the few woodworking programs offered at a public school in San Diego County. Heli Trevino has been with the Sweetwater Union District for the past 8 years and is on his second year teaching the woodshop class. He collects tools at yard sales, swap meets and wood from cabinet shops and just about anywhere he can find it. With such steep budget cuts in the San Diego school system, he can use all the help he can get. We are going to do our part by making a \$1000 donation to the Hilltop Middle School in order to promote the woodworking skills that set the foundation for future woodworkers like ourselves.

As I mentioned in my last newsletter article Russ Filbeck will be taking the Shopsmith that was donated to the association to the Good Samaritans Boys Ranch along with a lot of other tools and items of interest. Please keep an eye out for Russ's input in an upcoming newsletter.

Special Thanks to our Toy Program members Roger Solheid, Charlie Bierman, Terry Stolzoff and Chuck Luebbers for spending the day at the Boy Scout Jamboree. Another great way to get out and help our youth learn some basic woodworking skills.

Robert Threm: [sdfwapresident@cox.net](mailto:sdfwapresident@cox.net) 619 993-8207

### Volunteer - Would you like to help?

Volunteering is generally considered an altruistic activity, intended to promote good or improve human quality of life. It is considered as serving the society through own interest, personal skills or learning, which in return produces a feeling of self-worth and respect, instead of money. Volunteering is also famous for the skill development, to socialize and to have fun. It is also intended to make contacts for possible employment or for a variety of other reasons. Volunteering takes many forms, and can be performed by anyone with own set of skills.

If you would like to volunteer in any capacity, please email me directly so we can set up a time to talk and see how your skills can help. **THANK YOU VERY MUCH!!** If interested, please contact Robert Threm at:

Email: [sdfwapresident@cox.net](mailto:sdfwapresident@cox.net) Phone: 619-993-8207

---

### Swap Meet Chairman

If you'd like to get more involved in the Association on a limited basis, this is your chance. The SDFWA holds the swap meet twice a year, November and April. This position affords you the opportunity of getting your feet wet while filling a much-needed opening within the club. If interested, please contact Robert Threm at:

Email: [sdfwapresident@cox.net](mailto:sdfwapresident@cox.net) Phone: 619-993-8207

---

### Publicity Chairman

We are looking for someone to fill the position of Publicity Chairman. If you want to help the SDFWA get recognized out on town or in the media, we could use your help. Please have some background in the publicity or advertising field, computer experience and the willingness to help promote the SDFWA in the way it deserves. If interested, please contact Robert Threm at:

Email: [sdfwapresident@cox.net](mailto:sdfwapresident@cox.net) Phone: 619-993-8207

## Monthly Reports

Toy Report			Cutouts & Memory Boxes			
			Cutouts		Memory Boxes	
16	Fork Lifts	Jerry's Toy Group				
102	Cars & Trucks	Chuck Goldsmith	Jim Bradbury	30		
35	Power Tops	George Byme	Al De Vries	210		
20	Cars	Ed Hujsak				
10	Cars	Paul Trebbien				
5	Baby Bed Sets	Barbara Moyer (Texas)				



Our Toy production total for this period was 188 and 964 for the year. Please help out by providing some time to build toys for the boys & girls.

Roger Solheid, Chairman

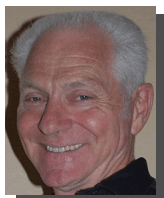
Email: rsolheid@sbcglobal.net, Phone: 858-279-1140

### Membership

SDFWA currently has 834 members with an additional 321 spousal members. 52 of the members are new for 2012. These numbers are lower than recent years. For some reason, many members forgot to renew for 2012.

For the first time, our membership application form offers a two-year option. While there is no savings, it helps those who do not want a lapse in membership. A great number of you have taken advantage of this. Anyone who has paid for their 2013 membership prior to Dec 31,

### New Member Workshop



For all new members attending the May 30th meeting. Russ Filbeck is hosting his New Member Workshop on Sunday June 3rd at 9:00 AM.

Russ will talk about and demonstrate using stains, dyes and grain fillers. Each new mem-



### We need your helping hand.

Please help to take some of the pain & boredom out of the boys & girls hospital stay. Please see Al De Vries for wood & plans.

Al De Vries, Chairman

Email: alfreddev@hotmail.com Phone: 619-440-6598

2012, will get their cards laminated. I will send them out in December or early January.

As an added convenience, your membership expiration date is on the newsletter mailing label, for those who receive a paper newsletter.

Thanks for renewing your membership. If you speak to friends who have not been receiving their newsletter in the mail or on the web, remind them to renew their membership.

Sia McGown, SDFWA Membership Chairman

ber will go home with a sample piece that illustrates these finishing techniques.

The workshop is for new members only attending the General Meeting.

Please RSVP to Russ at: rcfilbeck@aol.com or you can call him at 858-566-9699 if you are interested in attending.

# Design in Wood: OUT OF THIS WORLD



## DESIGN IN WOOD: OUT OF THIS WORLD

The 31st Annual Design in Wood Exhibition will open on June 8, 2012 with 366 entries from 200 artisans. We have received some really great entries and the exhibit promises to be one of the best ever.

Set up starts Monday, May 21, 2012 at 8:30am at the Mission Tower Building at the San Diego County Fairgrounds, Del Mar. You can enter in the Solana Gate and park on the west side of the building. Set up will be from May 21st to May 24th. We will not be working May 25, 26, and 27th. For those of you who can volunteer to help out, we will be providing refreshments along with lunch. In addition, each person who helps out will receive up to four (4) tickets each day they work. There is no sign up list for helping out at set up. Just show up and sign in on the log book. We have the tools and look forward to your help. If you do bring your own tools, make sure your name is clearly written on each tool.

**IMPORTANT NOTE: THE MAIN PARKING LOT OFF JIMMY DURANTE BLVD. WILL NOT BE AVAILABLE FOR GENERAL PARKING UNTIL MAY 30 DUE TO THE CIRQUE DU SOLEIL SHOW.**

Once the Fair opens on June 8, we will have large volumes of people visiting the exhibit every day from 11:00am to 11:00pm. **We need help**, especially in the evenings, manning the exhibit. At the time I am writing this, we have roughly 100 or 50% of the shifts to yet fill on the gallery floor.

As usual, the shop shifts are filling a bit faster but we still have 50 shifts left to fill there.

If you can help out, there are several ways to sign up:

1. You can call Eric Lunde at 858-487-7644 and ask him to help you.
2. You can email Eric and have him help you sign up that way: [eric.lunde@cox.net](mailto:eric.lunde@cox.net)

3. You can do it all yourself at [SDFWA.org](http://SDFWA.org). Just follow the below directions. All you need is your email address and your member number from your membership card.

Here is what to do:

- A. Go to [www.sdfwa.org](http://www.sdfwa.org)
- B. Click on: **Volunteer to help with Design in Wood**
- C. Click on **DIW Volunteer Schedule**

Look for some open dates you can help us with and write down the days and times you want.

- D. Now go back to the previous page and select **Go To DIW Volunteer Log In**

- E. Enter your member number from your membership card and enter your email address.

**"LOG IN"**

- F. Follow the directions on the Log In page

**If you experience any problems, call or email Eric Lunde at 858-487-7644 or [eric.lunde@cox.net](mailto:eric.lunde@cox.net).**

## Thank you!

James,

Thank you so very much for the Wardrobe you dropped off yesterday! My team is excited to get creative with the painting and begin using it. I will send more photos of the children using the new wooden toys and wardrobe later in the month to share with the Fine Wood Workers Association! We appreciate everything you do to support military families! Attached is the picture of you and wardrobe!

Respectfully,

Lyndsay Neer  
Program Director, Youth and Community Outreach  
San Diego Armed Services YMCA



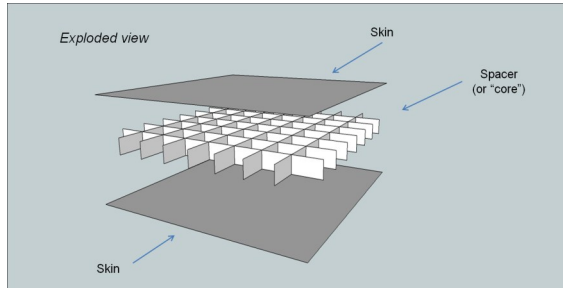
# New Lumber

**Editors note:** This month's article comes from Jamie Buxton of the Bay Area Woodworkers Association.

## Torsion Boxes

A torsion box is a structure that is stiff, light, flat, and stable. Furthermore, it can be constructed from floppy, low-grade materials and still be very strong.

The box consists of two skins and a spacer:



Good for large, flat surface needs, such as:

Tables & desks

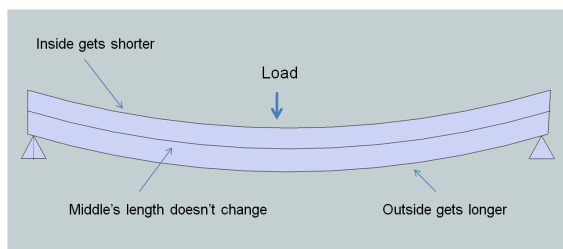
Doors

Beds

Shelves (with a long span between supports)

Shop: workbench, assembly table, router table, etc.

## Structural engineering 101a



Beam stiffness is provided by compression of inside surface and elongation of outside surface.

The middle doesn't provide stiffness. It only connects and separates the outside surfaces.

We can remove most of the beam's interior without changing its stiffness very much. The only requirement is that we leave enough interior material so that the outer surfaces cannot collapse toward each other when the beam is bent. A torsion box can achieve almost all of the stiffness of a solid beam even though it is mostly air.

## Structural engineering 101b

Beam stiffness is proportional to the cube of its thickness.

Make your beam only 25% thicker, and it is 2 times stiffer.

Make it twice as thick, and it is 8 times stiffer.

## Spacer materials

Wood grid. (Most easily built in a small shop.)

Plywood, lumber, MDF okay. 1/8" plywood works well.

Cardboard (hollow-core doors)

Honeycomb of plastic (skis & snowboards) or metal (airplanes)

Styrofoam (surf boards)

## Skin materials

Plywood

MDF

(Plywood is stiffer and lighter for the same skin thickness.)

## Edging

Generally include solid-lumber edge for appearance or for joinery to other components.

## Construction (without vacuum press)

1) Select and rough-cut skins.

2) Make grid (or whatever spacer will be).

I cut long strips on the table saw, being careful that the strips are straight and the same width. Then I cut slots part-way through the strips so they'll fit together in a grid. I clamp the strips together and gang-cut the slots.

The slotting doesn't have to be fine; you just need the strips to form the grid without colliding with each other.

3) Make the lumber edging, making sure it is straight and the same thickness as the grid.

4) Glue edging to one skin. If the edging is not tall enough to ensure that it stays straight while you're gluing it, use a straight caul to help. Can use mechanical clamps here.

5) Glue grid to that skin. Use a sheet caul (like plywood) and weights.

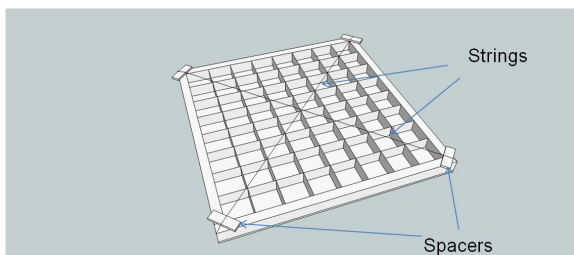
6) Shim assembly at the corners to remove



twist. This is the only crucial step in the process. If you glue on the second skin while everything is twisted, the resulting torsion box will be twisted too, and you won't be able to untwist it. More on untwisting later.

7) Glue second skin on. Again, sheet caulk with weights. Use caution with the weights. You want enough weight to get the skin tight to the grid and edging, but not so much that you bend the box.

### Unwarping techniques



a) Flat reference surface. In my shop I have an assembly table that itself is a torsion box. Using the crossed-string technique below, I built it flat. It now ensures that all subsequent torsion boxes I build are flat.

b) Level. If all four edges are horizontal, they must also be in the same plane; that is, they're not warped. You can put a level on each edge and shim the corners until the levels are all horizontal. If you have only one level (like most of us), you can work one edge at a time, but you'll find yourself readjusting each corner several times.

c) Winding sticks. Classical technique, but not as sensitive as the crossed strings.

d) Crossed strings. Run strings from corner to corner so that they form a big X on the subassembly. Place equal-height spacers under the strings at each corner so that they don't touch the grid. In addition, for the string that crosses over the other, add shims at the corners which are exactly the thickness of the string. Tension the strings to remove sag. When the assembly is flat, the strings will just kiss at the crossing point.

I use monofilament line for my string. This technique is very sensitive. On a box which is 24"x75", I can see the effect of putting just one business card under one corner of the box.

### Other possibilities

This discussion has been about how to make flat torsion boxes. However, it is easily possible to make curved torsion boxes. Make one set of ribs in the grid curved, and the torsion box becomes barrel-shaped. Gluing on the skins gets a bit tricky, but it can be done. And although I've pictured rectangular torsion boxes, they can be round or any other shape you want.



BAWA

PO Box 77411

San Francisco, CA 94107 9991

<http://www.bayareawoodworkers.org/index.html>

## Sawdust

### Letter from the Editor



We need your help! Once again we are a short on content for the newsletter.

Each month, we'd like to be able to show off the incredible talents and knowledge of our members, but **we**

**need your input** to make that hap-

pen! If you've ever used a saw or hammer & nails then you have knowledge & experience to share with all of us. Please send me your stories, anecdotes, tips & tricks or pictures of your work to share with our membership. Remember, the San Diego Fine Woodworkers is what you make it!

Please contact Ross Rehart at: [rehartr@yahoo.com](mailto:rehartr@yahoo.com) or Phone: 760-445-1233

## 2012 SDFWA Directors & Committees

### Directors

President	Robert Threm	619-993-8207	sdfwapresident@cox.net
Vice-President	James LaGrone	858-484-6595	James_lagrone@yahoo.com
Treasurer	Bernie Burke	760-723-0972	bernieburke@roadrunner.com
Secretary	Dick Ugoretz	858-490-6295	rugoretz@yahoo.com
Member at Large	Ed Gladney	858-484-4366	Gladney@san.rr.com

### Committees

Email List Manager	Rhoda Keegan	858-278-3632	rhodak@san.rr.com
Historian	Chuck Meacham	858-273-8677	cmeacham@san.rr.com
Magazine & Book Sales	Pat Kowalke	760-489-9804	ppattyk@cox.net
	Ron Posten		
Membership	Sia McGown	619-223-3259	SDFWA.membership@gmail.com
	Leonard Wener	619-222-5521	lenwener@cox.net
	Harry Baldwin	858-278-8718	HarrySDFWA@aol.com
Membership Greeters	Bob Reese	858-695-2460	rtreese@gmail.com
	Doug Parker	619-421-0636	gothamst@sbcglobal.net
Mentor Program	Ed Gladney	858-484-4366	Gladney@san.rr.com
Merchandise	Al De Vries	619-440-6598	alfreddev@hotmail.com
Newsletter	Ross Rehart	760-445-1233	rehartr@yahoo.com
Pro Bono	Jim Vitale	858-623-8630	jamespvitale@yahoo.com
Programs	Del Cover	858-270-7739	del@delcoverwoodworking.com

### Committees

Property	Robert Threm	619-993-8207	sdfwapresident@cox.net
	Dale Stauffer	619-561-2202	ddstauffer@cox.net
Publicity	<b>VACANT—HELP NEEDED</b>		
	Don Spangler	858-270-6165	coffeeorganic@hotmail.com
Refreshments	Glen Weischedel	619-588-5477	wishers54@yahoo.com
	Ron Rossi	619-582-9883	ronrossi@cox.net

Resources & Raffle	Jim Strawn	619-887-8090	jlstrawn@cox.net
	Jim Bradbury	858-586-1220	bradburyjp@sbcglobal.net
Scholarships	Russ Filbeck	858-566-9699	rcfilbeck@aol.com
Shop Tours	Dale Stauffer	619-561-2202	ddstauffer@cox.net
Shows & Exhibits	Bob Stevenson	619-422-7338	bobscww@cox.net
Sound Technician	Thomas Johnson	619-281-7170	tejohnson22058@aol.com
Special Events	Ed Gladney	858-484-4366	Gladney@san.rr.com
	Linda Sanders	760-804-1918	lindabsanders@roadrunner.com
Swap Meet	<b>VACANT—HELP NEEDED</b>		
Toy Program	Roger Solheid	858-279-1140	rsolheid@sbcgobal.net
	Terry Stolzoff	619-869-1224	woodycut@gmail.com
	Charlie Bierman	619-276-0048	
Video Library	Bob Reese	858-695-2460	rtreese@gmail.com
Video Technician	Michael Fairbanks	619-465-4972	mkfairdpmm@netscape.net
Wants & Disposals	Bob Coates	619-258-8674	coatesrm@att.net
Web Site	Doug Murphy	619-441-9665	dw-murphy@cox.net

## 2012 Upcoming Meetings

### General Meetings

All meetings will start at 7:00 PM unless otherwise noted below

Al Bahr Temple (Behind the Hampton Inn)  
5440 Kearney Mesa Rd., San Diego

May 30th

July 25th

September 26th

November 28th

### Board Meetings

All meetings will start at 7:00 PM unless otherwise noted below

The Hardwood & Hardware Co.  
8849 Complex Drive, San Diego

July 11th

September 5th

November 7th

## Resources & Sponsors

*To receive your discounts, please show your membership card before you make a purchase.*

### American Furniture Design Co

www.americanfurnituredsgn.com

Phone: (760) 743-6923 (Orders)

Hours: 8:30-4:30 M-F

Email americanfurniture@cox.net

Brian Murphy, Proprietor

125 of the Finest Woodworking Plans, The only supplier of  
Daly's Finishing Supplies in San Diego, Hardware, Hand Tools  
and Books. SDFWA member Benefits, 15% on all products and  
Free Shipping in San Diego County.



## **Bayside Paint, Inc.**

www.baysidepaint.com

Phone (619) 275-7800

Hours: 6:30 – 5:30 M-F, 8 -5 Saturdays

Email: info@baysidepaint.com

1228 Knoxville St., San Diego, CA 92120

Robert Lewis, Manager

Mohawk Finishing Products and many other stains, sealers, fillers and tools. Free delivery with minimum order and UPS shipping available. 10% discount to SDFWA members.

## **C.A. Brandon Trophy & Awards**

www.cabrandonawards.com

Phone: (619) 464-0919

Hours: 7:30-5:00 M-F, 8:00-1:00 Sat.

Email: brandontrophies@aol.com

4007 Citradora Drive, Spring Valley, CA 92123

Cathi Grzeskowiak, Owner

CA Brandon provides engraving and Laser engraving available on a variety of surfaces including metal and plastic plates. We have a large stock to choose from and most custom wood pieces can be laser engraved. Please call before coming in. 10% discount with your current SDFWA membership card.

## **Craftsman Studio - Woodworking Tools Store**

www.CraftsmanStudio.com

Phone: (888) 500-9093

Hours: Mon 10:00-5:00, Tue-Thu 9:00 - 5:00, Closed Fri - Sun

Email: CustomerService@CraftsmanStudio.com

2737 Via Orange Way - Suite 110, Spring Valley, CA 91978

Bill Kohr - Proprietor

Stocking Authorized Dealers for: Lie-Nielsen Toolworks, Auriou, Shapton, DMT, TANOS (Systainers), Veritas, FastCap, Trend Diamond Products, Glen-Drake Toolworks, Czeck Edge Tools, Two Cherries Carving Tools. In-store discount to SDFWA Members on selected products.

**Note:** web orders ship Mon-Fri.

## **DeWalt, Porter Cable, & Delta**

### **Factory Service Center**

Phone: (858) 279-2012

Hours: 7:30-4:30 M-F

7290 Claremont Mesa Blvd. San Diego, CA 92111

Dave Stelmachowski, Manager

Porter Cable, Delta, DeWalt, Devilbiss, FLEX, Biesemeyer and Oldham Parts, Accessories, Repairs and Reconditioned Tools. Special consideration to SDFWA members.

## **Environmental Spray Systems**

www.espraysystems.com

Phone: (858) 279-7114

Hours: 8:00-5:30 M-F

Email: service@espraysystems.com

7114 Convoy Ct. San Diego, CA 92111

Sam Rinaker, Owner

Specializing in spray finishing equipment. Local distributor for Devilbiss, Graco, Paasche, Accuspray, Ransberg and Gema. 10% discount to SDFWA members.

## **Fas-N-Go**

Phone: (619) 424-4774

Hours: 7:30-5:00 M-F

2260 Main St. Suite 15, Chula Vista CA

Nail guns, brads, staples, nails, plus accessories for nail guns and repair service. Distributor for 3M, Senco, Haubold, Josef Kihlberg, Spotnail, Hitachi, Bostich and Paslode. 10% discount on sales and service.

## **FixMyBatteries.com**

www.fixmybatteries.com

Phone: (760)747-8762

Hours: 9:00 – 5:00 M-F; 9:00 – 1:00 Sat

Email: service@fixmybatteries.com

1291 Simpson Way Suite F, Escondido CA 92029

Josh Zeller, Proprietor, Disabled Veteran Owned and Operated

We rebuild ANY BRAND power tool battery pack. Ours are longer lasting batteries with more power than retail batteries. Higher quality batteries at a fraction of the cost! \*\* The only rechargeable batteries we do not rebuild are Lithium Ion. 10% discount with your current SDFWA membership card.

## **Frost Hardwood Lumber**

www.frosthardwood.com

Phone: (858) 455-9060 (800) 258-3534

Hours: 7:00-4:30 M-F, 8:00-12:30 Sat.

6565 Miramar Rd. San Diego, CA 92112

Jim Frost, proprietor

They stock a wide variety of domestic and imported hardwoods as well as veneers, laminates and many other supplies for the commercial and hobbyist woodworker. The Frosts (Mr. G. T.,

Bruce and Jim) along with their staff stand ready to serve your woodworking needs. Special SDFWA discount.

### **TH&H: The Hardwood and Hardware Company**

*The Woodworkers one stop for Material and Supplies*

[www.th-h.com](http://www.th-h.com)

Phone: (858) 536-1800 Fax: (858) 614-1811

Hours: M-F 7:00-5:00, Sat. 9:00-4:00

8849 Complex Dr. San Diego, CA 92123

Tom Drinnon, manager

Hardwood lumber, Moldings, Veneers, Cabinet Hardware, Finishes, Hand Tools and Supplies. Contractor discount to members.

### **Lane Stanton Vance Lumber**

Phone: (619) 442-0821

Hours: 7:00-3:00 M-F

360 Vernon Way, El Cajon, CA 92020

The company carries domestic and imported hardwoods, molding and panel products for cabinetmakers, furniture makers and contractors. Contractor discount to members.

### **Mission Molding & Wood Specialties**

[www.missionmoulding.com](http://www.missionmoulding.com)

Phone: (858) 569-8591

Hours: 7:30-5:00 M-F, 8:00-1:00 Sat.

9510 Chesapeake Dr. # 401. San Diego, CA 92123

Bob Hawk, manager

The sign inside Mission Molding's door says, "We have one of the largest selections of architectural and decorative moldings in Southern California." Select from more than 300 patterns in a variety of woods as well as polystyrene, fiberglass and primed plastic. The staff of Mission Molding can also supply you with mantels, handrails, balusters, columns and more. Depending on the item, SDFWA members will get a 5% to 10% discount.

### **Packaging Store**

[www.gopackagingstore.com](http://www.gopackagingstore.com)

Phone: (858) 549-7225, Fax (858) 549-7274

Hours: 9:00-5:00 M-F

7848 Silverton, Suite A, San Diego, CA 92128

Peter Wharf

Custom boxes, crating, packing supplies, and shipping. Phone estimates and pick up service available. 10% discount to SDFWA members.

### **R. S. Hughes CO. Inc.**

[www.rshuges.com](http://www.rshuges.com)

Phone: (760) 579-0222

Hours: 7:45-5:00 M-F

1281-B Liberty Way, Vista, CA 92081-8309

Chuck Schweikart, Manager

San Diego's largest inventory of 3m abrasives, adhesives, safety equipment and more. Phone orders/estimates. UPS shipping or walk in service available. 10% discount to members.

### **Rockler Woodworking and Hardware**

[www.rockler.com](http://www.rockler.com)

Phone: (858) 268-1005

Hours: 9:00-6:00 M-F, 9:00-5:00 Sat., 11:00-4:00 Sun.

8199 Claremont Mesa Blvd. San Diego, CA 92111

Mike Durlak, manager

Rockler is an excellent source for hard to find hardware and accessories. Manager Mike Durlak and his staff can help you with good selection of hardware, exotic hardwoods, veneers, inlays, specialty moldings, fine woodworking hand tools, select power tools, an impressive array of finishing materials, a great selection of books and plans, and weekly workshops in many disciplines. Visit this great woodworking source next time you need that special item that no one else seems to have. Catalogues are available. 10% discount on general purchases (except power Tools).

### **Russ Filbeck, Master Chair Maker**

[www.russfilbeck.com](http://www.russfilbeck.com)

Phone: (858) 566-9699

Email: [rcfilbeck@aol.com](mailto:rcfilbeck@aol.com)

Make your own heirloom quality chair. Chair styles include Appalachian Ladder Back and Windsor chairs. All materials, tools and instruction provided. Class size is limited to two students. 10% discount for SDFWA members on the Two-Slat Ladder Back or Sack Back Windsor chair class. Use the web site, e-mail or call Russ to schedule your class.

### **Shellac Finishes**

[www.shellacfinishes.biz](http://www.shellacfinishes.biz)

Email: [sales@shellacfinishes.biz](mailto:sales@shellacfinishes.biz)

Vijay Velji, Proprietor

Internet only. Shipped USPS

De-Waxed Shellac Flakes for classical woodworkers at very competitive prices.

SDFWA members must enter coupon code 1010 during check-out to receive a 10% discount

## Tropical Exotic Hardwoods of Latin America

www.anexotichardwood.com

Hours: Mon. -Fri. 8:30 to 4:30, Sat. 9:30 - 1:00

Phone: (760) 434-3030, Fax: (760) 434-5423

2270 Camino Vida Roble, Suite "B", Carlsbad, Ca. 92012

Mitch Talcove, Owner manager

Specializing in a wide selection, varieties, sizes, and shapes of Exotic Hardwoods from Latin America.

10% off all purchases with valid SDFWA card. (cash or check preferred if SDFWA discount is being applied)

## Tool Depot

Phone: (619) 220-7111

Hours: 7:00-6:00 M-F, 9:00-5:00 Sat.

3799 Gaines St, San Diego, CA 92110

Bob Welte

Tool Depot offers fine high quality woodworking tools from around the world and a knowledgeable service orientated staff. New and used tools and equipment sold and traded. Tool repair and sharpening services are also available. 10% discount on hand tools and accessories

## Toolmart, Inc.

www.toolmarts.com

Phone: (760) 480-1444, Fax (760) 747-2626

Hours: 7:00-5:30 M-F, 7:00-4:00 Sat.

2750 Auto Park Way, Escondido, CA 92029-1030

Jeff McCreary, manager

Discount tool store and authorized repair center.  
10% discount to members on accessories.

## Woodworker West

www.woodwest.com

P.O. Box 452058, Los Angeles, CA 90045

Phone: (310) 216-9265 Fax: (310) 216-9274

Email: editor@woodwest.com

Ron Goldman, publisher

Published bi monthly to promote craftsmanship in woodworking throughout the western U.S. Discount subscription rate to SDFWA members. \$10 for one year and \$18 for two years.

# Woodchips

## GREMLINS IN THE SHOP

By Arthur Smith



Do any other woodworkers have Gremlins in their shop? Everybody has that mischievous spirit that runs off with that important thing-

anabob that you need for your next step in the project, but darned if you can find it. I just have to wonder, "why are they targeting me?"

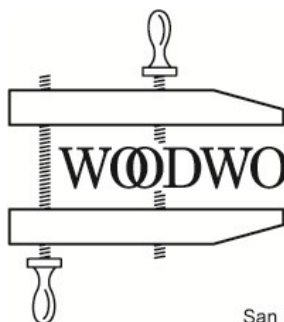
It began just after my 70th birthday celebration. My pencil began disappearing when I needed it, then reappear in another part of the shop, or would be hidden under an

ongoing project part.

I never saw them, they must be very small or invisible, and wait until my back was turned. Keeping one in my shirt pocket was the obvious answer, but they took it back to where I had been working previously. Tying a string to it and hanging it around my neck seemed a good idea, until I envisioned myself strangled at the drill press or lathe.

I wasted so much time looking for my pencil, I went out and bought a dozen box. Placing a pencil in every strategic area would be my answer to defeat those little demons. The battle was won, for a while, but the war continued. The pencil set at the drill press would be at the scroll saw, the one at the table saw, at the radial arm saw and so on. Much easier to find with so many lying around I have accepted the status quo.

Perhaps they will go away and target another shop. Better hope it is NOT yours. Strange thing though, what happened to that steel rule I like to use?



SAN DIEGO  
**FINE  
WOODWORKERS**  
ASSOCIATION

P.O. Box 82323  
San Diego CA 92138-2323

RETURN SERVICE REQUESTED

Non-Profit Org.  
U.S. Postage Paid  
Permit 697  
San Diego, CA

**We're on the Web!**  
<http://www.sdfwa.org>

Mailing Label

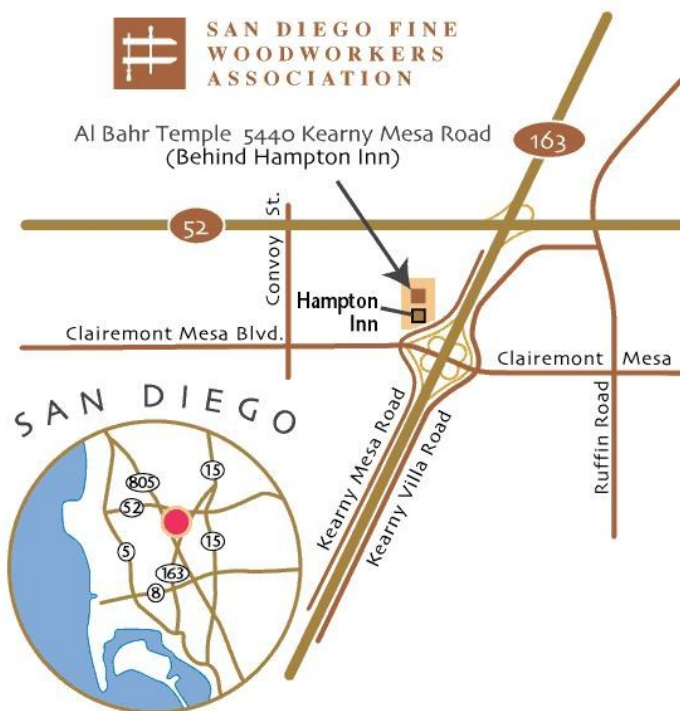
**Next meeting: 7:00 pm, Wednesday, May 30th, 2012 at the Al Bahr Temple**

## MONTHLY MEETINGS



SAN DIEGO FINE  
WOODWORKERS  
ASSOCIATION

Al Bahr Temple 5440 Kearny Mesa Road  
(Behind Hampton Inn)



## VIDEO LOAN REQUEST

I wish to borrow one of the following videotapes and agree to return it within seven (7) days of my receipt of it. A postpaid return label and an order form are enclosed. I understand that a late return charge of \$1 per day may be assessed and that I am responsible for replacement of the tape if it is damaged or lost while in my custody. If your first choice is not available, you will receive your second choice.

Enclosed is \$3.50 to cover postage and handling. My choices are:

(1) \_\_\_\_\_ (2) \_\_\_\_\_

NAME: \_\_\_\_\_ PHONE: \_\_\_\_\_ Email \_\_\_\_\_

ADDRESS: \_\_\_\_\_ CITY \_\_\_\_\_ STATE \_\_\_\_\_ ZIP CODE \_\_\_\_\_

SIGNATURE: \_\_\_\_\_

Make checks payable to SDFWA. Mail to SDFWA LIBRARY, c/o R. T. Reese 10886 Aviary Court, San Diego, CA 92131

858-695-2460 rtreese@gmail.com

---

### San Diego Fine Woodworkers Association Membership Application

**Print Clearly**

Date: \_\_\_\_/\_\_\_\_/\_\_\_\_

☐ **NEW** Where did you hear about us? \_\_\_\_\_

☐ **RENEWAL**

Name: \_\_\_\_\_

First

Middle

Last

I would like a membership card for my spouse: \_\_\_\_\_

Name

Mailing Address: \_\_\_\_\_

City: \_\_\_\_\_ State \_\_\_\_\_ Zip Code (9 digits) \_\_\_\_\_ - \_\_\_\_\_

Telephone: (\_\_\_\_) \_\_\_\_\_ - \_\_\_\_\_

E-Mail Address: \_\_\_\_\_

Your information will only be shared within this Association and on a need-to-know basis.

You will receive your newsletter via the SDFWA website unless you indicate otherwise.

You will be notified when the newsletter is available on the website at [www.SDFWA.org](http://www.SDFWA.org).

I would like to receive my newsletter By U.S. mail \_\_\_\_\_

☐ **\$30 dues for one-calendar year membership**

☐ **\$60 dues for two-calendar year membership**

**Mail form and payment to: SDFWA P.O. Box 82323 San Diego, CA 92138-2323**



Place  
Stamp  
Here

---

**We're on the Web!**  
**<http://www.sdfwa.org>**

---



---

Fold Along Line