

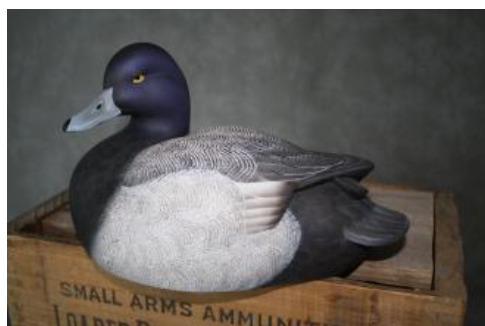


San Diego Fine Woodworkers Association

Volume 31
Issue 2
March 2012

HARDWOOD GAZETTE

March Program: The Art of Deception (Decoys)



"Lesser Scaup" by Del Herbert

Del Herbert, award winning carver, will be giving a program on the history of decoy art. He will show some of the tools, materials and patterns used in making the realistic carvings. He will have a dozen or so examples for us to look at. You can preview his work at:
<http://www.delsdecoys.com>

Del is in constant demand to judge shows

and competitions around the U.S. and Canada.

He delivered the Keynote Speech in Winnipeg, Manitoba, Canada at the Prairie Canada Carving Show and Competition in 2010.

Del is also the past President of the Pacific Southwest Wildlife Arts group which sponsors the annual California Open Wildlife Art Show. As President, Del helped to make this show and competition into one of the premier Wildlife Exhibitions on the West Coast.

In addition to his carving and his activities in support of Wildlife and Decoy Duck carving, Del also teaches seminars across the country and in Canada. Some of his biggest rewards have come from encouraging new carvers and having his students win awards.

In this issue:

March Program	1
From the President	2
Mentors	3
Design in Wood	4
Sawdust Woodchips	6
New Lumber	7
Directors & Committees	9
Sponsors & Resources	11

Special points of interest:

- Fresh Finish! We have a new format for the newsletter. Check it out here and on-line where you can click your way through the pages!
- Special Auction at the next General Meeting! See page 3 for more info.



Mark Your Calendar



Next Meeting	Al Bahr Temple 5540 Kerny Mesa Rd, San Diego, 92111	March 28, 2012 7:00 PM
New Member Workshop*	Russ Filbeck 11088 Delphinus Way, San Diego, 92126	April 1, 2012 9:00 AM - Noon
Shop Tour	Stig Lundberg's Shop 31581 Larga Vista, Valley Center, 92082	March 31, 2012
Old Tools Swap Meet	Rockler 8199 Clairemont Mesa Blvd, San Diego	April 1, 2012 6:00 AM - Noon
Design in Wood: Out of this World	Del Mar Fair Grounds 2260 Jimmy Durante Blvd, Del Mar, CA 92014	June 8— July 4, 2012

From the President:



It is my sad duty to inform you of the passing of two members of the Fine Woodworkers family, Harry Feucht and Jerry Blakeley.

Harry has been with the SDFWA since 1985 and has held a number of positions spending countless hours volunteering with our association. Just like an army marches on its stomach, so does the Design in Wood Show and one of Harry's biggest duties was exactly that. He and his team took care of every aspect of making sure our "troops" were well fed and ready to work setting up for the fair. Not an easy task but every time I would walk past Harry you would see a smile on his face and a glimmer in his eye.

Jerry's shop was one of the central hubs for the toy program. Week after week "Jerry's group" would meet there working away the hours building toys, drinking coffee and eating donuts. Jerry opened his house and shop not only to the toymakers, but essentially to thousands of children throughout San Diego County. Jerry's love of woodworking and desire to give back to the community made his shop a great place to fulfill the dreams of many of the less fortunate in our city. Jerry's wife Pat has invited the toy group to use the shop while continuing the legacy of giving back. Pat, we thank you from the bottom of our hearts.

Harry and Jerry are two incredible examples of how sharing your knowledge, passion and creativity can touch the lives of others, while filling their own hearts and souls, knowing they made a difference.

Please Renew your Membership

Renew, renew, renew.... If you haven't sent in your membership form yet, or renewed online, you had better get moving. Not only are you losing out on valuable discounts, but you won't be able to attend some of the upcoming events including the SPECIAL AUCTION at our next meeting.

Tool Swap Meet at Rockler

If you're looking for a great deal on that special tool you've been in search of... look no further. On Sunday, April 1st you can haggle till your heart's content and drive home with your swap meet find. Just remember to get there early if you're looking to buy OR sell.

SDFWA -- what does it mean to you?

For some, it's wanting to be a part of a larger group who share the love of the craft. Others find it very rewarding to serve the community, by making cutouts, memory boxes or, building toys for the less fortunate. Many of us enjoy teaching, volunteering or just coming to the meetings to talk with old friends, have a cup of coffee and listen to speaker for the evening. Whatever the reason, we try our best to make your membership something that you will value every year - and for years to come.

In order to meet the needs and expectations of our association, **we need to hear from you.** Tell us what you like or dislike, what you want or what you're ready to get rid of. I recently received a few emails from members who shared their comments and questions. Some good, some bad, but all took the initiative to make their voices heard. You can contact me directly or contact any of the Board or Chairpersons, all of our contact information is on the website and in this newsletter.

Robert Threm, President

Publicity Chairman

We are looking for someone to fill the position of Publicity Chairman. If you want to help the SDFWA get recognized out in town or in the media, we could use your help. Please have some background in the publicity or advertising field, computer experience and the willingness to help promote the SDFWA in the way it deserves. If interested, please contact Robert Threm at:

Email: sdfwapresident@cox.net Phone: 619-993-8207

Swap Meet Chairman

If you'd like to get more involved in the Association on a limited basis, this is your chance. The SDFWA holds the swap meet twice a year, November and April. This position affords you the opportunity of getting your feet wet while filling a much-needed opening within the club. If interested, please contact Robert Threm at:

Email: sdfwapresident@cox.net Phone: 619-993-8207

Our New-look Newsletter is here!

We've been working hard to bring new and exiting content to our members. Starting now, you'll find a great new format and feel to the newsletter. We're going to be including new content like Member anecdotes, expert articles, and much more! Some of the things you've been used to seeing here are being moved to the website like the Raffle prizes for each meeting, the Toy report, Member Report, Wants & Disposal, and our Cutouts &

Memory boxes report. So head on over to our website at www.sdfwa.org and check it out! And, please, let us know what you think of the new format & features here!

Special Auction at the next General Meeting!

At our next meeting we will be auctioning off a Shop Smith 510 with all the trimmings - worth over \$6000 new! Come early to take a look at the photos and get ready to place your bids!



Mentor Program



Our Mentor Programs are in full swing this year, but **we need your suggestions!** In January and February we had outstanding turn outs for our 'Introduction to Routers' and Hand Tool Sharpening Programs, respectively.

Chuck Anderson lead the Routers program as attendees learned all about routers, their many jigs and attachments, as well as critical safety and operation tips.

Instructors for the Sharpening program were Doug Parker, Martin Ruch, Phil Goetsch, Ron Rossi, and Ed Gladney (me!). Everyone who participated learned the art and science around sharpening, as well as multiple methods to

keep their tools sharp & safe. Each instructor manned a workstation teaching sharpening via Water & Diamond stones, the Tormek machine, the Work Sharp machine, the 'Scary Sharp' system, and I taught folks how to sharpen up their scrapers. Head on over to our website at www.sdfwa.org, to download some informative material on sharpening tips & tricks!

Check out some of the photos below to see how much fun we had! And remember, we need your help! Send your suggestions for future mentor programs to Ed Gladney at: sdfwaMentor@san.rr.com Phone: 858-484-4366



Members enjoy their Cup 'o Joe as Ed explains the program



Ron Rossi explains the Work Sharp tool

Design in Wood: OUT OF THIS WORLD

In just a couple of months we will be celebrating our 31st Design in Wood Exhibition.

IS YOUR ENTRY READY? WHY NOT?

This is your chance to show your work. Entries are already coming in. Remember, the entry deadline is **April 29, 2012**.

The dates for this year's Design in Wood are **June 8 - July 4**. The Fairgrounds will be closed on three (3) Mondays - June 11, June 18, and June 25.

Work in the 19th Century Chair Shop

At the March general meeting we will start signing up for working in the chair shop making children's chairs for charity. Great fun! A chance to learn to use hand tools besides educate and entertain the general public. We will once again give two (2) **FREE** passes to the Fair for each shift you sign up for. Sign up for several shifts and get enough passes for family and friends.

Walk the Floor

It is also time to sign up to help out in the Gallery Showroom meeting the public, helping to take care of the many beautiful pieces in the show, and assisting the staff. The staff will provide you with direction and have all the answers to questions the public asks that you can't answer yourselves.

We will once again give two (2) **FREE** passes to the Fair for each shift you sign up for. Sign up for several shifts and get enough passes for family and friends.

Set Up

We will once again need help with set up. We have three (3) semi's of equipment to set up in Mission Tower.

NO NEED TO SIGN UP AHEAD OF TIME - JUST SHOW UP AND BRING YOUR SCREW GUN LOADED AND CHARGED.

The dates of set up are: May 21 to May 24

The hours are: 8:30am - 4:00pm

Make sure your tools are clearly marked with your name.

We pay well with morning refreshments and good lunches plus two (2) **FREE** passes to the Fair for each day worked. Be sure to sign in each day as you arrive at the gallery. I guarantee that you will enjoy helping out at Design in Wood.

IMPORTANT DATE CHANGE FOR THIS YEAR ONLY

The awards ceremony for Design in Wood will be held **Sunday evening, June 10, 2012**, starting at 7:00pm instead of the usual opening night of the Fair. Please mark your calendars.

Sign up on line to help out at Design in Wood

If you can't make it to the General Meetings and desire to sign up to help at the Fair this year, we have simplified the method to sign up online. You will need your email address and membership number. You must use the email address you put on your membership. You will not have to establish a password.

If you can't make it to a general meeting and can't enter online, you can call Eric Lunde at: 858-487-7644. Leave a message and he will return your call and assist you in signing up.

You may also enter by sending an email to Eric Lunde with your request at: eric.lunde@cox.net

Please note: We will only have signups at the March & April General Meetings. Signups will not be done at the May general meeting.

Design in Wood Show - Awards

The following will be awarded in each class:

First Place	\$200	and Rosette
Second Place	\$175	and Rosette
Third Place	\$150	and Rosette
Fourth Place	\$ 75	and Rosette + Two year subscription to "Woodworkers Journal"

Honorable Mention Ribbons may be awarded at the discretion of the judges. No exhibitor will be allowed more than two monetary awards per class; however, there is no limit as to the number of rosettes or donated awards an exhibitor may win. Award checks will be mailed 30 days after the close of the Fair. We reserve the right to combine classes if insufficient entries are received in one or more classes. The San Diego County Fair assumes no responsibility for awards donated by clubs, firms or individuals.

Master Woodworker's Trophy

\$250 Trophy & Rosette

Theme Award

\$250 & Rosette for exhibit that is the best representation of the Fair theme- "Out Of This World".

Sponsor's Choice Perpetual Trophy

\$250 value in merchandise and plaque. Award donated by: TH&H: Hardwood & Hardware Company

Donated Awards

American Woodworker & Woodwork Magazine

Best of Show – Furniture - \$1,000 and Rosette
Best of Show - Other Than Furniture \$1,000 and Rosette

Fine Woodworking Magazine

Award for furniture Design - \$500, Rosette and \$400 Value in merchandise consisting of:

- FWW Archive DVD \$150
- Set of Books – Complete Illustrated Guide \$200
- Subscription to FWW Magazine & Website \$50

WOOD Magazine

Excellence in Workmanship - Rosette & \$528 Value in merchandise consisting of:

- 10 Videos by WOOD editors \$200
- Complete WOOD back-issue collection on DVD \$150
- Any 4 discs in the WOOD "Complete Guide" DVD series \$100
- Weekend Woodworking projects collection DVD \$50
- One-Year WOOD Magazine subscription \$28

Woodcraft Magazine

Excellence in Design \$500 and Rosette

Apollo Sprayers Inc. Excellence in Finishing

- 1st Place \$500 Gift Certificate
- 2nd Place \$300 Gift Certificate
- 3rd Place \$150 Gift Certificate

People's Choice Awards

Sponsored by Woodworker West

1st Place - \$300 2nd Place - \$200 3rd Place - \$100

San Diego Maritime Museum Perpetual Trophy

Best Scale Model Ship - \$500 and Rosette

Carolyn R. Beres Memorial Award

\$500 and Rosette for most Creative and Technically Excellent Fretwork depicting Birds, Animals, or Marine Animals

San Diego Scroll Saw Clubs Fretwork & Intarsia

(2 Awards) To qualify for the awards, you must be a member of a So CA Scroll Club as of April 27, 2012 and never have received an award in the Design In Wood competition.

- 1st Place \$150, trophy and rosette
- 2nd Place \$100 and rosette
- 3rd Place \$ 50 and rosette

Popular Woodworking Magazine

Best Use of Traditional Woodworking Techniques
\$300 and Rosette

Society of American Period Furniture Makers

Recognition Award for Traditional Woodworking - Furniture
1 year membership in S.A.P.F.M., \$250 + Rosette

California Carvers Guild - Must be CA resident & not have won a monetary award in **Design In Wood** for 2 years.
Stylization Excellence \$150 Stylization Originality \$100

American Furniture Design Company Award

Plaque and Rosette \$200

Urban Forest Products Award

Donated by West Coast Arborist, Inc. Best entry of recycled, reused, reclaimed or salvaged wood.
100 board foot of Urban Hardwood

San Diego Fine Woodworkers Association

for Novice* and for Advanced** (2 awards). To qualify for these awards, you must be a member of SDFWA as of April 27, 2012

- First Place \$ 250, trophy and rosette
- Second Place \$ 150 and rosette
- Third Place \$ 100 and rosette

* Novice - Entrant has never received an award in the Design In Wood competition. **Advanced - Entrant has previously received an award in the Design In Wood competition.

Sawdust

New Member Workshop

For all new members attending the March 28th meeting. Russ Filbeck is hosting his New Member Workshop on Sunday April 1st at 9:00 AM.



Russ will demonstrate techniques for squaring rough lumber. Utilizing the planer, jointer, and table saw, Russ will review basic safety rules for, and operation of these common shop tools. Following his review, Russ will demonstrate how to use the squaring techniques in preparing parts for a small project like a wall or mantle clock.

The workshop is for new members only attending the General Meeting. Russ will also invite a couple of committee or board members who have not previously attended one of his workshops to help out and help the new members become familiar with the club.

Please RSVP to Russ at: rcfilbeck@aol.com if you are interested in attending

Letter from the Editor

I hope you're as excited as I am about the new format! Thanks to your input and participation, we've put together what I feel is one of the best newsletters around.



Some of the exiting things we've done, besides the new formatting, are printing the pictures of our Directors and contributors (so you know who we are!), made it easier to find things like the calendar of upcoming events by putting it right on the front page, and added exciting new features such as member anecdotes & advice. In the online version, you will find hyperlinks have been added to things like email and physical addresses to some of our activities. Now finding out where something like the latest Shop Tour will be is only a *click* away!

In the coming months we'll continue to add new things to both the print and web version of the newsletter. As always, your feedback and input are welcomed!

Please contact Ross Rehart at: rehartr@yahoo.com

Wood Chips: Stories & Tips from our Members

Murphy's Law and the \$500 Toilet Paper

Holder (abridged)

by Mike McElhiney



Mike and his friend Larry took Murphy's law as seriously as they took anything. They were always discovering how Murphy's Law applied to woodworkers. For instance, "If ten of anything need-

ed to be cut on a band saw, the blade will break on the ninth cut," which it did!

Murphy was not content with breaking band saw blades

on the ninth cut. One of his best jokes was the five hundred dollar toilet paper holder.

Mike's client, Bill, asked if Mike would remodel his bathroom for him. While going over designs and discussing price, Bill asked him if he would build a simple little oak toilet paper holder that was flush with the wall. Surely, this would be an easy task! Mike offered to throw it in for free, thinking it would be a piece of cake and could be made simply from scrap wood.

The first one was fairly simple. There was a vertical dowel inserted at the base of the holder over which the roll of paper slid. The problem was that a roll of toilet paper

would not slide over the dowel because of lack of headroom. When Mike cut the dowel shorter, the toilet paper roll fell out of the holder when he pulled on the paper.

The second try was more conventional. The roll of paper was horizontal that slid easily into the holder. Everything worked well and the holder went out and was installed with the vanity. Six weeks later, Mike got a call from Bill's irate wife who said she couldn't slide a roll of paper onto the dowel because the hole in the roll of paper was too small or the dowel was too big.

When Mike went to look at the paper holder, he had to acknowledge the problem. As he was trying to remove it in the cramped area by the toilet, his pry bar slipped and he gouged a hole in the new wallpaper.

The third holder, finished in two weeks, worked with various sized rolls of paper and went in perfectly. Oh, how happy Bill – and his wife – was. But the damage was done. Luckily there was a half a roll of wallpaper left over from the papering job and it only cost Mike \$200 to pay the cheerful paper hanger to re-paper the hole in the wall. Mike figured that actual time building the holders was about 40 hours, making his labor cost at least \$300. Murphy ended up costing Mike \$500! But, at least he finally had a happy customer!

What a place for such a Passion! by Don Slaughter

Have you seen what the San Diego Maritime Museum is building? Right here in downtown San Diego we have the San Salvador open to the public for viewing.

At last meeting Russ Filbeck urged us to visit the site on Tuesday and, as always, I follow all instructions that fall from the lips of the Great Ones (there are several) in our SDFWA community. This policy has never failed to provide for very positive experiences. My trip to the San Salvador was more than memorable; it was exhilarating, entertaining and extremely educational. Russ had an arena there and was very energetically educating and sharing his passion for the details of wood. I spent two semesters with Russ, and still learn something every time I'm near him. He is adept at immersing himself in the "goodness" of any woodworking enterprise with the capacity to appreciate him. Russ volunteered and promoted donations to fund the San Salvador restoration project.

I hope anyone reading this will come to realize the immense treasure we have within our organization. Talent beyond belief coupled with a humbleness and goodwill rarely found in our contemporary times.

New Lumber

Editors note: Welcome to "New Lumber"! Each month we will try to get permission to publish an article from one of our fellow woodworkers and woodworking experts around the country. Our first article comes from David Tilson of the OCWA. Let us know what you think!

Kryptonite for Woodworkers?

By David Tilson

Unless you've been living under a rock for the last few years, you know that cigarette smoke is harmful even if you're not the one doing the puffing. And the diesel fumes and soot from those old school buses we rode in as kids were pretty hard on our lungs too. But toxic sawdust? *Come on, wood dust is just plant fiber, same as Metamucil, right?* Well ... not quite, as it turns out.

While it's true that all wood is made up largely of cellu-

lose, a plant sugar that is indigestible to humans but that does help clean the crud out of our digestive tracts, there are actually a lot of other things in there as well. For example, there is a compound called lignin, the glue that holds the wood's fibers together and gives wood its characteristic springiness and shock resistance. In addition to cellulose and lignin, different species of wood contain various chemicals that give each wood its characteristic color, odor, taste, decay resistance, oiliness, abrasion resistance, and even flame retardant properties. Unfortunately for us as woodworkers, many of these same chemicals can be

irritants or allergens, and make us sick if we get too much exposure to them. I've personally known people to have severe reactions to rosewoods such as cocobolo, or to zebrawood, local-grown silk-oak, and even good ol' American walnut. As it turns out, in order to survive in a world filled with saber-toothed termites and other wood-eating beasts, many trees use chemical warfare as a means of defense, which can cause offense to the unwary woodworker. Sort of like kryptonite to Superman, the very wood you're working can do a job on you.

The major form of exposure to most woodworkers is to wood dust. Powdered bits of wood have way more exposed surface area than the solid block of wood from which they were made, thus they can react thousands of times more potently with our bodies' chemistry. If a liquid, such as sweat, is present to leach out the chemicals and spread them over the skin, or the dust is inhaled, the exposure becomes even more serious. The worst case is when working with green wood, which produces raw, sticky sap-filled dust and shavings.

So how do you protect yourself, short of wearing a Kevlar hazmat suit in the woodshop? There are three practical ways to minimize your exposure to wood dust: primary dust collection at the source, secondary dust collection around the shop environment, and sensible use of personal protective gear. Used together, these three systems (remember [Rule #1](#)?) give the woodworker the ease of use and flexibility to get the project built on time, but also provide the needed buffer between yourself and whatever crud the tree is hiding inside.

Primary dust collection occurs at the source of the dust: a tool has a dust shroud and port, to which a dust collector or vacuum is connected. There's always a little dust that gets by the dust shroud, though, so a secondary dust collection system, such as an air filtration unit, gives you an extra layer of protection against breathing too much dust. When purchasing dust collection or air filtration units, try to get one that filters out 99% or more of particles down to one micron in size. Physicians say that it's the particles between about three and ten microns that are the worst, since they are small enough to get down into your lungs' alveoli. That's where they can have more-or-less direct contact with your bloodstream and do their worst. A

good dust collection system can also extend the life of your equipment, and make your shop a much more pleasant place to work. The problem with dust collection is that the dust collector eventually fills up and needs to be emptied, which leads to dust exposure, and the dust has to get past you in order to reach the air filtration unit, so you'll be exposed to at least some dust there also.

Personal protection fills the gaps left in any shop's dust collection system. It stops the dust from being inhaled or contacting your skin, thus minimizing potential exposure to toxins or allergens from the wood. Personal protective equipment consists of clothing that blocks dust from reaching the skin, and masks that block dust from being inhaled. Long pants that cover the tops of high-topped boots keep dust from your lower extremities. A long sleeved shirt can protect your torso and arms, but remember to roll the sleeves up and secure them that way before using power tools, or they might get caught in the moving parts. Buttoning the collar and un-tucking the shirt can give chips a way to escape when you're really making a mess, as with a chainsaw or on the lathe. A hat shields you from dust falling from above. Just how all those dust bunny "paratroops" get up there I don't know, but a lot of them do. Ball caps are popular, but I prefer a short-brimmed cloth cap, because the button of a ball cap hurts when it gets under the headband of a pair of ear muffs (hearing protection), and the long brim often gets in the way. Sometimes I'm able to wear gloves to minimize dust exposure on my hands, but in a world of power tools, it's not very often that you can safely wear gloves. In any case, you should remember that the clothing is protective equipment, so change clothes and wash your hands when you leave the shop to avoid continued exposure to any irritants.

Finally, to avoid that fine, inhaled dust (the most dangerous kind), there's the respirator. I don't use dust masks, because they are not designed for protection against *harmful* dust or contaminants. Many actually have a notice to the effect that they are NOT OSHA APPROVED for such use. A better option is a respirator with one-micron or finer filters on it. 3M makes a comfortable half-mask respirator that is widely available, not too expensive – maybe \$40, which includes particulate (dust) and charcoal

(vapor) filters – and uses one-micron filters. The charcoal filters on these are designed for filtering out organic vapors, such as finishing solvents, which can also cause serious health problems with frequent overexposure. Some masks actually boast HEPA filters, which stop at least 99.9% of all particles down to one-tenth of a micron in size – great for those with severe allergies or asthma. Of course, read and follow the manufacturer's instructions, and if the filter appears saturated with dust or you smell solvent odors, replace it immediately. If you experience

itching, rash, dizziness, nausea, sneezing, difficulty breathing, drowsiness, irregular heartbeat or death, you should stop working with wood or chemicals immediately and contact a physician. You might just have encountered your own personal “woodworker’s kryptonite.”

For more about toxic and allergenic woods, look online at <http://www.library.davidtilson.com/materials.html>

*Originally published 12/2011 in **Sawdust & Shavings**, the newsletter of the Orange County Woodworkers’ Association*

2012 SDFWA Directors & Committees

Directors

President	Robert Threm	619-993-8207	sdfwapresident@cox.net
Vice-President	James LaGrone	858-484-6595	James_lagrone@yahoo.com
Treasurer	Bernie Burke	760-723-0972	bernieburke@roadrunner.com
Secretary	Dick Ugoretz	858-490-6295	rugoretz@yahoo.com
Member at Large	Ed Gladney	858-484-4366	Gladney@san.rr.com

Committees

Email List Manager	Rhoda Keegan	858-278-3632	rhodak@san.rr.com
Historian	Chuck Meacham	858-273-8677	cmeacham@san.rr.com
Magazine & Book Sales	Pat Kowalke	760-489-9804	ppattyk@cox.net
	Ron Posten		
Membership	Sia McGown	619-223-3259	SDFWA.membership@gmail.com
	Leonard Wener	619-222-5521	lenwener@cox.net
	Harry Baldwin	858-278-8718	HarrySDFWA@aol.com
Membership Greeters	Bob Reese	858-695-2460	rtreese@gmail.com
	Doug Parker	619-421-0636	gothamst@sbcglobal.net
Mentor Program	Ed Gladney	858-484-4366	Gladney@san.rr.com
Merchandise	Al De Vries	619-440-6598	alfreddev@hotmail.com
Newsletter	Ross Rehart	760-445-1233	rehartr@yahoo.com
Pro Bono	Jim Vitale	858-623-8630	jamespvitale@yahoo.com
Programs	Del Cover	858-270-7739	del@delcoverwoodworking.com

Committees

Property	Robert Threm	619-993-8207	sdfwapresident@cox.net
	Dale Stauffer	619-561-2202	ddstauffer@cox.net
Publicity	VACANT—HELP NEEDED		
Refreshments	Don Spangler	858-270-6165	coffeeorganic@hotmail.com
	Glen Weischedel	619-588-5477	wishers54@yahoo.com
	Ron Rossi	619-582-9883	ronrossi@cox.net
Resources & Raffle	Jim Strawn	619-887-8090	jlstrawn@cox.net
	Jim Bradbury	858-586-1220	bradburyjp@sbcglobal.net
Scholarships	Russ Filbeck	858-566-9699	rcfilbeck@aol.com
Shop Tours	Dale Stauffer	619-561-2202	ddstauffer@cox.net
Shows & Exhibits	Bob Stevenson	619-422-7338	bobscww@cox.net
Sound Technician	Thomas Johnson	619-281-7170	tejohnson22058@aol.com
Special Events	Ed Gladney	858-484-4366	Gladney@san.rr.com
	Linda Sanders	760-804-1918	lindabsanders@roadrunner.com
Swap Meet	VACANT—HELP NEEDED		
Toy Program	Roger Solheid	858-279-1140	rsolheid@sbcglobal.net
	Terry Stolzoff	619-869-1224	woodycut@gmail.com
	Charlie Bierman	619-276-0048	
Video Library	Bob Reese	858-695-2460	rtreese@gmail.com
Video Technician	Michael Fairbanks	619-465-4972	mkfairdpm@netscape.net
Wants & Disposals	Bob Coates	619-258-8674	coatesrm@att.net
Web Site	Doug Murphy	619-441-9665	dw-murphy@cox.net

2012 Upcoming Meetings

General Meetings

All meetings will start at 7:00 PM unless otherwise noted below

Al Bahr Temple (Behind the Hampton Inn)
5440 Kearney Mesa Rd., San Diego

March 28th	July 25th
April 25th	September 26th
May 30th	November 28th

Board Meetings

All meetings will start at 7:00 PM unless otherwise noted below

The Hardwood & Hardware Co.
8849 Complex Drive, San Diego

April 4th	September 5th
May 2nd	November 7th
July 11th	

Resources & Sponsors

To receive your discounts, please show your membership card before you make a purchase.

American Furniture Design Co

www.americanfurnituredsgn.com
Phone: (760) 743-6923 (Orders)
Hours: 8:30-4:30 M-F
Email americanfurniture@cox.net
Brian Murphy, Proprietor

125 of the Finest Woodworking Plans, The only supplier of Daly's Finishing Supplies in San Diego, Hardware, Hand Tools and Books. SDFWA member Benefits, 15% on all products and Free Shipping in San Diego County.

Bayside Paint, Inc.

www.baysidepaint.com
Phone (619) 275-7800
Hours: 6:30 – 5:30 M-F, 8 -5 Saturdays
Email: info@baysidepaint.com
1228 Knoxville St., San Diego, CA 92120
Robert Lewis, Manager

Mohawk Finishing Products and many other stains, sealers, fillers and tools. Free delivery with minimum order and UPS shipping available. 10% discount to SDFWA members.

C.A. Brandon Trophy & Awards

www.cabrandonawards.com
Phone: (619) 464-0919
Hours: 7:30-5:00 M-F, 8:00-1:00 Sat.
Email: brandontrophies@aol.com
4007 Citradora Drive, Spring Valley, CA 92123
Cathi Grzeskowiak, Owner

CA Brandon provides engraving and Laser engraving available on a variety of surfaces including metal and plastic plates. We have a large stock to choose from and most custom wood pieces can be laser engraved. Please call before coming in. 10% discount with your current SDFWA membership card.

Craftsman Studio Woodworking Tools Store

www.CraftsmanStudio.com
Phone: (888) 500-9093
Hours: 10:00-4:00 T-F. Closed Sat, Sun & Mon
Email: CustomerService@CraftsmanStudio.com

2737 Via Orange Way - Suite 110, Spring Valley, CA 91978
Bill Kohr - Proprietor

Fine American, European and Japanese Hand Tools and books for woodworkers. Selection of over 500 Two Cherries German Carving Tools. Stocking distributor for Lie-Nielsen, HNT Gordon, and Auriou tools. In stock and ready to ship with 1-2 day delivery in Southern California. Discount to SDFWA members on in-store purchases of selected items - Web and store prices may vary. **Note:** web orders ship Mon-Fri.

DeWalt, Porter Cable, & Delta

Factory Service Center

Phone: (858) 279-2012
Hours: 7:30-4:30 M-F
7290 Claremont Mesa Blvd. San Diego, CA 92111
Dave Stelmachowski, Manager

Porter Cable, Delta, DeWalt, Devilbiss, FLEX, Biesemeyer and Oldham Parts, Accessories, Repairs and Reconditioned Tools. Special consideration to SDFWA members.

Dunn-Edwards Paints

www.dunnedwards.com
Phone: (619) 668-5091
Hours: 6:30-5:00 Mon-Sat.
5250 Jackson Dr. #100 La Mesa, CA 91941
Sam Arthur, manager

The industry's finest source for lacquer, varnish, stains, water-based paint, oil-based paint, primers, urethanes, brushes, rollers and sundries. We also feature computerized color matching, color consultant, spray equipment, repair, rentals, specifications and free delivery. Call for more information.

Environmental Spray Systems

www.espraysystems.com
Phone: (858) 279-7114
Hours: 8:00-5:30 M-F
Email: service@espraysystems.com
7114 Convoy Ct. San Diego, CA 92111
Sam Rinaker, Owner

Specializing in spray finishing equipment. Local distributor for Devilbiss, Graco, Paasche, Accuspray, Ransberg and Gema. 10% discount to SDFWA members.

Fas-N-Go

Phone: (619) 424-4774
Hours: 7:30-5:00 M-F
2260 Main St. Suite 15, Chula Vista CA

Nail guns, brads, staples, nails, plus accessories for nail guns and repair service. Distributor for 3M, Senco, Haubold, Josef Kihlberg, Spotnail, Hitachi, Bostich and Paslode. 10% discount on sales and service.

FixMyBatteries.com

www.fixmybatteries.com
Phone: (760)747-8762
Hours: 9:00 – 5:00 M-F; 9:00 – 1:00 Sat
Email: service@fixmybatteries.com
1291 Simpson Way Suite F, Escondido CA 92029
Josh Zeller, Proprietor, Disabled Veteran Owned and Operated

We rebuild ANY BRAND power tool battery pack. Ours are longer lasting batteries with more power than retail batteries. Higher quality batteries at a fraction of the cost! ** The only rechargeable batteries we do not rebuild are Lithium Ion. 10% discount with your current SDFWA membership card.

Frost Hardwood Lumber

www.frosthardwood.com
Phone: (858) 455-9060 (800) 258-3534
Hours: 7:00-4:30 M-F, 8:00-12:30 Sat.
6565 Miramar Rd. San Diego, CA 92112
Jim Frost, proprietor

They stock a wide variety of domestic and imported hardwoods as well as veneers, laminates and many other supplies for the commercial and hobbyist woodworker. The Frosts (Mr. G. T., Bruce and Jim) along with their staff stand ready to serve your woodworking needs. Special SDFWA discount.

TH&H: The Hardwood and Hardware Company

The Woodworkers one stop for Material and Supplies
www.th-h.com
Phone: (858) 536-1800 Fax: (858) 614-1811
Hours: M-F 7:00-5:00, Sat. 9:00-4:00
8849 Complex Dr. San Diego, CA 92123
Tom Drinnon, manager

Hardwood lumber, Moldings, Veneers, Cabinet Hardware, Finishes, Hand Tools and Supplies. Contractor discount to members.

Lane Stanton Vance Lumber

Phone: (619) 442-0821
Hours: 7:00-3:00 M-F
360 Vernon Way, El Cajon, CA 92020

The company carries domestic and imported hardwoods, molding and panel products for cabinetmakers, furniture makers and contractors. Contractor discount to members.

Mission Molding & Wood Specialties

www.missionmoulding.com
Phone: (858) 569-8591
Hours: 7:30-5:00 M-F, 8:00-1:00 Sat.
9510 Chesapeake Dr. # 401. San Diego, CA 92123
Bob Hawk, manager

The sign inside Mission Molding's door says, "We have one of the largest selections of architectural and decorative moldings in Southern California." Select from more than 300 patterns in a variety of woods as well as polystyrene, fiberglass and primed plastic. The staff of Mission Molding can also supply you with mantels, handrails, balusters, columns and more. Depending on the item, SDFWA members will get a 5% to 10% discount.

Packaging Store

www.gopackagingstore.com
Phone: (858) 549-7225, Fax (858) 549-7274
Hours: 9:00-5:00 M-F
7848 Silverton, Suite A, San Diego, CA 92128
Peter Wharf

Custom boxes, crating, packing supplies, and shipping. Phone estimates and pick up service available. 10% discount to SDFWA members.

R. S. Hughes CO. Inc.

www.rshuges.com
Phone: (760) 579-0222
Hours: 7:45-5:00 M-F
1281-B Liberty Way, Vista, CA 92081-8309
Chuck Schweikart, Manager

San Diego's largest inventory of 3m abrasives, adhesives, safety equipment and more. Phone orders/estimates. UPS shipping or walk in service available. 10% discount to members.

Rockler Woodworking and Hardware

www.rockler.com

Phone: (858) 268-1005

Hours: 9:00–6:00 M-F, 9:00-5:00 Sat., 11:00-4:00 Sun.

8199 Claremont Mesa Blvd. San Diego, CA 92111

Mike Durlak, manager

Rockler is an excellent source for hard to find hardware and accessories. Manager Mike Durlak and his staff can help you with good selection of hardware, exotic hardwoods, veneers, inlays, specialty moldings, fine woodworking hand tools, select power tools, an impressive array of finishing materials, a great selection of books and plans, and weekly workshops in many disciplines. Visit this great woodworking source next time you need that special item that no one else seems to have. Catalogues are available. 10% discount on general purchases (except power Tools).

Russ Filbeck, Master Chair Maker

www.russfilbeck.com

Phone: (858) 566-9699

Email: rcfilbeck@aol.com

Make your own heirloom quality chair. Chair styles include Appalachian Ladder Back and Windsor chairs. All materials, tools and instruction provided. Class size is limited to two students. 10% discount for SDFWA members on the Two-Slat Ladder Back or Sack Back Windsor chair class. Use the web site, e-mail or call Russ to schedule your class.

Shellac Finishes

www.shellacfinishes.biz

Email: sales@shellacfinishes.biz

Vijay Velji, Proprietor

Internet only. Shipped USPS

De-Waxed Shellac Flakes for classical woodworkers at very competitive prices.

SDFWA members must enter coupon code 1010 during check-out to receive a 10% discount

Tropical Exotic Hardwoods of Latin America

www.anexotichardwood.com

Hours: Mon. -Fri. 8:30 to 4:30, Sat. 9:30 - 1:00

Phone: (760) 434-3030, Fax: (760) 434-5423

2270 Camino Vida Roble, Suite "B", Carlsbad, Ca. 92012

Mitch Talcove, Owner manager

Specializing in a wide selection, varieties, sizes, and shapes of Exotic Hardwoods from Latin America.

10% off all purchases with valid SDFWA card. (cash or check preferred if SDFWA discount is being applied)

Tool Depot

Phone: (619) 220-7111

Hours: 7:00-6:00 M-F, 9:00-5:00 Sat.

3799 Gaines St, San Diego, CA 92110

Bob Welte

Tool Depot offers fine high quality woodworking tools from around the world and a knowledgeable service orientated staff. New and used tools and equipment sold and traded. Tool repair and sharpening services are also available. 10% discount on hand tools and accessories

Toolmart, Inc

www.toolmarts.com

Phone: (760) 480-1444, Fax (760) 747-2626

Hours: 7:00-5:30 M-F, 7:00-4:00 Sat.

2750 Auto Park Way, Escondido, CA 92029-1030

Jeff McCreary, manager

Discount tool store and authorized repair center.
10% discount to members on accessories.

Woodworker West

www.woodwest.com

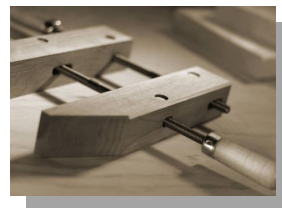
P.O. Box 452058, Los Angeles, CA 90045

Phone: (310) 216-9265 Fax: (310) 216-9274

Email: editor@woodwest.com

Ron Goldman, publisher

Published bi monthly to promote craftsmanship in woodworking throughout the western U.S. Discount subscription rate to SDFWA members. \$10 for one year and \$18 for two years.



VIDEO LOAN REQUEST

I wish to borrow one of the following videotapes and agree to return it within seven (7) days of my receipt of it. A postpaid return label and an order form are enclosed. I understand that a late return charge of \$1 per day may be assessed and that I am responsible for replacement of the tape if it is damaged or lost while in my custody. If your first choice is not available, you will receive your second choice.

Enclosed is \$3.50 to cover postage and handling. My choices are:

(1) _____ (2) _____

NAME: _____ PHONE: _____ Email _____

ADDRESS: _____ CITY _____ STATE _____ ZIP CODE _____

SIGNATURE: _____

Make checks payable to SDFWA. Mail to SDFWA LIBRARY, c/o R. T. Reese 10886 Aviary Court, San Diego, CA 92131

858-695-2460 rtreese@gmail.com

San Diego Fine Woodworkers Association Membership Application

Print Clearly

Date: ____/____/____

☐ **NEW** Where did you hear about us? _____

☐ **RENEWAL**

Name: _____

First

Middle

Last

I would like a membership card for my spouse: _____

Name

Mailing Address: _____

City: _____ State _____ Zip Code (9 digits) _____ - _____

Telephone: (____) _____ - _____

E-Mail Address: _____

Your information will only be shared within this Association and on a need-to-know basis.

You will receive your newsletter via the SDFWA website unless you indicate otherwise.

You will be notified when the newsletter is available on the website at www.SDFWA.org.

I would like to receive my newsletter By U.S. mail _____

\$30 dues for 2012 membership (expires Dec 31, 2012)

Mail form and payment to: SDFWA P.O. Box 82323 San Diego, CA 92138-2323

DESIGN IN WOOD

2012 Entry Form for Mailing

San Diego County Fair, Design In Wood, P.O. Box 685, Solana Beach, CA 92075

PRINTED NAME OF EXHIBITOR _____

(First Name Middle Initial Last Name)

Address: _____

City: _____ State: _____ ZIP: _____

Phone #: (____) _____ Email: _____

☐ I wish to receive Fairgrounds info by email

Processing fee is \$20.00 per entry. Please make your check payable to: 22nd DAA.

To enter online and pay by credit card, please visit www.sdfair.com/entry.

Mail your entry form, photos, and processing fees to the address above. Entry form must be USPS postmarked on or before Friday, April 27. On-line entries and photos must be submitted by 11:59 (Pacific Daylight Time) on Friday, April 27. Emails and faxes will not be accepted. Check calendar for other important dates.

The exhibitor agrees to defend, indemnify and hold harmless the Fair, the County and the State of California from and against any liability, claim, loss or expense (including reasonable attorneys' fees) arising out of any injury or damage which is caused by, arises from or is in any way connected with participation in this program or event, excepting only that caused by the sole active negligence of the Fair. The Fair management is not responsible for accidents or losses that may occur to any of the exhibitors or exhibits at the Fair. The exhibitor (or parent or guardian of a minor) is responsible for any injury or damage resulting from the exhibitor's participation in the program or event. This includes any injury to others or to the exhibitor or to the exhibitor's property.

I certify these entries are my work and that these entries comply with the Local and State rules. I acknowledge that these entries do not violate copyright or trademark laws. I agree that my name may be released to the press. I certify that I have read the statement listed above.

X Signature: _____ (original signature is mandatory)

Office Use Only	Receipt # _____ \$ _____ by _____ Date: _____ Exhibitor # _____
-----------------	---

Item No	Division No	Class No	Size L"xW"xH "	Description/Title Include wood species	Selling Price or NFS	Entry # (Office Use)
1.	1101		L: _____ W: _____ H: _____			
2.	1101		L: _____ W: _____ H: _____			
3.	1101		L: _____ W: _____ H: _____			

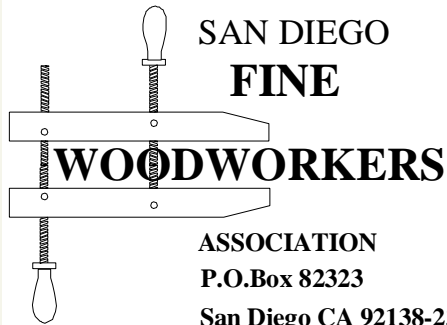
Number of entries _____ @\$20.00 each = \$ _____ (make checks payable to: 22nd DAA)

☐ I will be shipping entries - Please check **Shipping Instructions** for return shipping information.

SDFWA Member ☐ yes ☐ no **SDSSC Member** ☐ yes ☐ no

To use our fast, easy & secure on-line entry registration option visit www.sdfair.com/entry

Please make a copy of this form for your records



RETURN SERVICE REQUESTED

Non-Profit Org.
U.S. Postage Paid
Permit 697
San Diego, CA

We're on the Web!
<http://www.sdfwa.org>



Next meeting: 7:00 pm, Wednesday, March 28, 2012 at the Al Bahr Temple

MONTHLY MEETINGS

