

San Diego Fine Woodworkers Association

Our 30th Year of bringing Woodworkers together

Volume 30

May 2011 Newsletter

Issue 4

The Next Meeting is 7pm, May 25th
at the Al Bahr Temple, 5440 Kearny Mesa Rd.
Behind the Hampton Inn

May Program

Wood Painting by Patrice LeJeune

Patrice LeJeune, "Best of Show" winner from 2011 Design in Wood Show will be our featured speaker for the May Program. Patrice uses French marquetry techniques to make wood designs that look like paintings, complete with shading and his new technique of "sprinkling". He will be showing examples of his work along with demonstrating some of the unique techniques that he uses to achieve these remarkable pieces. Patrice is from Paris, but he has been working with Patrick Edwards at his American School of French Marquetry in North Park. I think that he will show a new level of woodworking unlike anything most of you have ever seen. Patrice has a feature article in the current May issue of San Diego Home and Garden magazine.

See you there,

Del Cover, Program Chairman



May Raffle

Please come early and take a good look at the prizes. Ticket sales begin at 6:30pm with another opportunity to buy additional tickets at the meeting break. The more tickets you buy the better the chance of winning that tool you've had your eye on and would look great in your shop. All of the money goes directly to acquiring bigger and better prizes. See you at the raffle.

- | | |
|---|---|
| 1. Lie Nielsen #4 Hand plane | 6. 16 Gallon Shop Vac |
| 2. Jet 7" woodworking vise | 7. Bessy 31" bar clamp set |
| 3. Bosch 5" palm random orbit sander | 8. Porter Cable 16g Finish Nailer |
| 4. Makita 18 Volt Compact Cordless Driver | 9. Woodline 6 piece Flush Trim Router Bit Set |
| 5. Kreg Jig Set | 10. Surprise bag |

James Strawn, Raffle Committee Chair, jlstrawn@cox.net

From the President...

Design in Wood

Our 30th anniversary of the Design in Wood Show kicks off next month and things are looking good! Another year with over 300 entries takes a lot of work... and we need your help. Set-up, walking the floor, working the chair shop and tear-down gives you ample opportunities to not only support our association, but the community as well. Every shift you work nets you two tickets to the fair so you can enjoy the delicious food while you're there.

Please see Bob Stevenson's article in this newsletter.

Fall Seminar

Ed Gladney and Linda Sanders are hard at work in the planning stages for the 2011 Fall Seminar featuring Paul Schurch! You've seen Paul's work in numerous Design In Wood shows and now you can see him in person at our 2 ½ day seminar. You couldn't ask for much more. A great speaker, great food and numerous door prizes all for \$100 (\$130 non-members)

See Ed Gladney's article in this and future newsletters.

Web Design

Do you have any experience building a website? If so, we are looking for your help. Our site needs updating and we can't do it alone. We have a most of the site content lined up, but we need help getting it from paper to the computer. We aren't looking for anyone to maintain the site; our webmaster does a fine job with that. It's actually building the site where we need the help.

Help us go from this: **Toymaking and Cutout Program**

To this:



Please email or call me. Thank you in advance

Robert Threm, President, sdfwapresident@cox.net 619 993-8207

Thank you for supporting the San Diego Fine Woodworkers Association.

New Member Workshop

For all **new members, attending the May 25th meeting**, Russ Filbeck is hosting a workshop on Door Building.

Russ will show you how to assemble a door using the horizontal boring machine to drill dowel holes. Doweling jigs will also be discussed as an alternative to a boring machine. Assembling rectangular doors as well as arched doors will be demonstrated. The second step will be fitting the door to a cabinet frame and cutting the hinge gains and installing hinges.

Please contact Russ to let him know you will be attending. Phone: 858-566-9699

When: Sunday, May 29, 2011 9am -12 noon

Where: 11088 Delphinus Way, San Diego, CA 92126

Design in Wood

ENTRIES HAVE CLOSED

Here are a few statistics on the entries: 176 entries from California; entries from 16 other states; 1 from Puerto Rico for a total of 374 entries from 208 entrants. The dates for this year's Design in Wood are June 10 - July 4. The Fairgrounds will be closed on three (3) Mondays - June 13, June 20, and June 27. The dates have been set; the entrants have committed to send their pieces into the show. **Now we need your help to make the show a success as we have for the past 29 years.**

San Diego Fine Woodworkers

We are in a critical state of affairs.

We need volunteers to help out with the Design in Wood Exhibition during the San Diego County Fair this year. Over 60% of the slots for walking the gallery floor are still open. Almost 50% of the shop spaces are still open.

Please go to the home page for www.sdfwa.org and sign up to help out.

Under "Coming Events" go to "Volunteer for the Design in Wood Show." It is the fourth line down. Click on it and follow the directions that appear.

If you have a problem call, Eric Lunde at 858-487-7644. If he doesn't answer, **LEAVE A MESSAGE.** He will call you back.

If you are concerned about parking, there is FREE parking available at Horse Park across the freeway from the Fairgrounds. **FREE** buses run every 15 minutes from Horse Park right to the main gate and then for your return trip after your shift and your day at the Fair.

On weekends, when the parking at Horse Park may be full, **FREE** parking is also available at Torrey Pines High School with **FREE** bus transportation to and from the main gate. Mira Costa College is another site offering **FREE** parking and shuttle service directly to the main gate.

Your time will be rewarded 10-fold. The experience is enlightening. We have over 365 entries of beautiful wood working to oversee and can't do it without your help.

Remember, you will receive **two (2) FREE** tickets for each shift you sign up for.

Thank you so much. I really need your support.

Bob Stevenson, Coordinator, Design in Wood

619-422-7338 – home, 619-253-7338 – cell, bobscww@cox.net

These are descriptions of where Design In Wood volunteers help out

Work in the 19th Century Chair Shop

Working in the chair shop making children's chairs for charity. Great fun! A chance to learn to use hand tools besides educate and entertain the general public. We will once again give two (2) **FREE** passes to the Fair for each shift you sign up for. Sign up for several shifts and get enough passes for family and friends.

Walk the Floor

Walking Gallery Showroom meeting the public, helping to take care of the many beautiful pieces in the show, and assisting the staff. The staff will provide you with direction and have all the answers to questions the public asks that you can't answer yourselves.

We will once again give two (2) **FREE** passes to the Fair for each shift you sign up for. Sign up for several shifts and get enough passes for family and friends.

Set Up

We will once again need help with set up. We have three (3) semis of equipment to set up in Mission Tower.

NO NEED TO SIGN UP AHEAD OF TIME - JUST SHOW UP AND BRING YOUR SCREW GUN LOADED AND CHARGED.

The dates of set up are: May 23 to May 27

The hours are: 8:30am - 4:00pm

Make sure your tools are clearly marked with your name.

We pay well with morning refreshments and good lunches plus two (2) **FREE** passes to the Fair for each day worked. Be sure to sign in each day as you arrive at the gallery. I guarantee that you will enjoy helping out at Design in Wood.

Toy Program

Since our last report the following toys & chairs have been completed:

52 Long Hauler & Car Sets Jerry's Toy Group

7 WWII Jeeps George Byrne



Our toy, chair, & table production total for 2011 is 959. Many thanks to all for contributing your skill, time and effort to bring our toy program to the needy. We are making lots of kids happy this year and I know we all enjoyed making toys. Thank you.

Roger Solheid, Toy Program Chairman

SDFWA Members at the Boy Scout Fair

Four SDFWA members had the opportunity to engage young Boy Scouts in woodworking at the Boy Scout Fair held at Qualcomm Stadium on Saturday, April 16. The annual day-long fair is quite large with many booths showcasing Boy Scout activities and other fun things to do, including a chili cook-off and a trebuchet throwing water balloons. Four 1-hour sessions were held with 20 boys each. Many of the 80 boys involved had never had the chance to actually use woodworking machinery as they got to create a car from scratch, complete with wheels.

Roger Solheid and Charlie Bierman guided the boys in cutting out their car from a block of wood on the jigsaw. Then, Don Spangler supervised them using the drill press to cut holes for the axles. Terry Stolzoff showed the boys how to sand the car and attach the wheels. The booth seemed to be quite a hit with the boys, as the sign-up list filled up quickly. Both the men and boys enjoyed themselves, and the boys seemed quite pleased with their cars.

Roger, Charlie and Terry are the Toy Program chairmen. Along with Don, they are members of Jerry Blakeley's toy-making group.



Wants and Disposals

As you all know, the Wants & Disposals is open only to current members that want to Buy, Sell, or Trade equipment or supplies. It is not for commercial ads.

To list an item, please e-mail Bob Coates at coatesrm@att.net or call 619-258-8674 and leave only your name, identify yourself as a SDFWA member, and an evening call back number. When I call back, please provide the following: Full Name, E mail address if you have one, the general area or town of San Diego Co. where the equipment can be seen, price range & describe the item.

Bring a picture to the meeting and a brief talk or sales pitch. We do not have display area, so please bring only pictures to the General Meeting.

Please Note; each ad will only run in one issue of the newsletter. If you want to run the ad again you will have to resubmit the information to Bob Coates at the above listed e-mail or phone number.

Bob Coates, Chairman Wants and Disposals

NOTICE

Please contact Bob Coates: coatesrm@att.net or 619-258-8674, when you have found a Buyer, an Item to buy, or the help you requested.

Disposals

149 board feet of old growth teak, I have a list of all the board's dimensions. Asking \$35/bdft.
Contact: Mike 858-231-2947 or av8termike@aol.com.

10 Drawer cabinet of assorted woodworking tools for sale. A list is available.
Contact: Jack Kriege, jkriege@cox.net

De Walt 1.3 amp, variable speed scroll saw. Model DW788. Excellent Condition. Asking \$350.
Contact: Deb, 760-945-5285. Vista

Approximately 60 BF of 5/4" red oak, Approximately 8 BF of purple heart - some 6/4" and other 3/4"
Contact: Ed Linneman, 760.822.6766. Escondido

Wants

I would appreciate it if you could help me find a woodworking person to do a small custom repair to a very nice mahogany carving of a Polynesian Tiki God. It stands about 16 inches in height, has a beveled bottom so it cannot stand upright without a special supporting stand. The original stand has failed and a new one is required. It is a small job but I would expect to pay very well for a craftsman who would take the time to design and fabricate a new support. I live in the San Diego area.

Contact: Jim Shiner, shiner3@cox.net

Out-of-state woodworker moving to San Diego area with well-equipped workshop, but nowhere to put it. Equipment includes Grizzly table saw, band saw, jointer, thickness planer, belt sander, drum sander and dust collector. Looking for workshop space to rent or share with one or more interested woodworkers. Any ideas welcome.

Contact: 615-587-3086, or agelidis@comcast.net

San Diego Fine Woodworkers Association
Proudly Presents the

2011 Fall Seminar

Paul Schurch

Veneer, Marquetry and Furniture Design

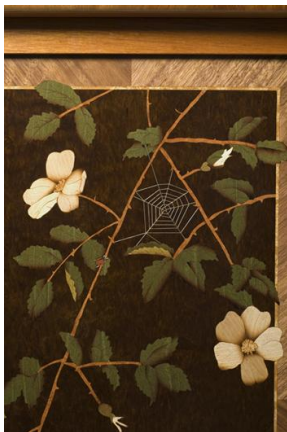
September 16, 17, 18, 2011



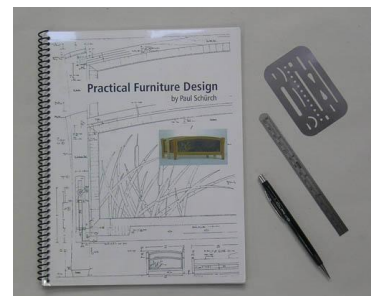
We are pleased to announce that world renowned, award winning artist, Paul Schurch is teaching our fall seminar. Paul has been a perpetual winner at the Design In Wood show and continues to amaze with his marquetry and furniture design. Paul is recognized throughout the world as a master artist. Lately Paul has been interested in teaching furniture design techniques along with veneering and marquetry. Paul's artist statement follows;

"The furniture I create is inspired by my connection to, and observation of nature. I see my furniture as an amalgam of classically

influenced styles and contemporary shapes, playful imagery and exotic materials. My challenge is to bring these elements together, and create from them a story that works. This is where my creativity is expressed and where I thrive. I am excited by the prospect of reinterpreting timeless concepts in a fresh and unique manner. I feel I am doing so by taking the art of marquetry beyond its former confines, and by occasionally using stone, gem and shell inlay in my images. My intention is to create pieces of integrity, including beauty and function."



- Paul's latest book- Practical Furniture Design
- 3-day seminar Friday evening, Saturday and Sunday
- Breakfast rolls, donuts, coffee and juice provided Saturday and Sunday morning
- Catered hot meal lunch – Saturday and Sunday
- Soft drinks, coffee and snacks provided all day



PLUS DOOR PRIZES THROUGHOUT THE DAY

**\$100.00 SDFWA Member
\$130 Non-members (includes 2011 SDFWA Membership)**

**TO SIGN UP ON LINE GO TO
WWW.SDFWA.ORG**

The San Diego Fine Woodworkers Association board of Directors feels our membership deserves the very best and this is why we want to provide such a great opportunity for you.

Paul Schurch Seminar

Friday, Saturday & Sunday, September 16, 17, 18, 2011

Friday 7PM – 9PM, Saturday 8AM – 4PM, Sunday 8AM – 3PM

LOCATION

**San Diego School for Creative & Performing Arts
2425 Dusk Drive
San Diego, CA 92139**

**Please fill out the form below and include your check made payable to SDFWA and
mail to:**

**San Diego Fine Woodworkers Association Seminar
P. O. Box 82323
San Diego, CA 92138-2323**

(Keep this half for time and place)

**Please sign me up for the
2011 San Diego Fine Woodworking Association seminar with Paul Schurch**

PLEASE PRINT CLEARLY

TO SIGN UP ON LINE GO TO WWW.SDFWA.ORG

NAME: LAST _____ FIRST _____

ADDRESS: _____

CITY & ZIP: _____

PHONE: _____ EMAIL: _____

Membership includes your spouse. If you wish a membership card for your spouse, please enter your spouse's name here _____

Your information will only be shared within this association and on a need-to-know basis.

Please select one: I wish to receive newsletters by mail _____ I'll read them on the SDFWA website _____

Amount Paid (Check one): _____ Member \$100 _____ Non-member \$130
(Non-member price includes 2011 member)

2011 San Diego Woodworkers Association

DIRECTORS

President:	Robert Threm	619-993-8207	sdfwapresident@cox.net
Vice-President:	David Henry	760-753-2484	dwhenry@simplyweb.net
Treasurer:	Douglas Parker	619-421-0636	gothamst@sbcglobal.net
Secretary:	Dick Ugoretz	858-490-6295	rugoretz@yahoo.com
Member at Large:	Ed Gladney	858-484-4366	Gladney@san.rr.com

COMMITTEES

E-Mail List Manager:	Rhoda Keegan	858-278-3632	rhodak@san.rr.com
Getting Connected:			
Historian:	Chuck Meacham	858-273-8677	cmeacham@san.rr.com
Magazine/book sales	Pat Kowalke	760-489-9804	ppattyk@cox.net
	Ron Posten		
Membership:	Sia McGown	619-223-3259	SDFWA.membership@gmail.com
	Leonard Wener	619-222-5521	lenwener@cox.net
	Harry Baldwin	858-278-8718	HarrySDFWA@aol.com
Membership Greeter:	James LaGrone	858-484-6595	james_lagrone@yahoo.com
Mentor Program:	Ed Gladney	858-484-4366	Gladney@san.rr.com
Merchandise:	Al De Vries	619-440-6598	alfreddev@hotmail.com
Newsletter:	Ron Rossi	619-582-9883	ronrossi@cox.net
Pro Bono:	Jim Vitale	858-623-8630	jamespvitale@yahoo.com
Programs:	Del Cover	858-270-7739	del@delcoverwoodworking.com
Property:	Robert Threm	619-993-8207	sdfwapresident@cox.net
	Dale Stauffer	619-561-2202	ddstauffer@cox.net
Publicity:	Tom Franks	858-278-2775	tsfranks@earthlink.net
Refreshments:	Don Spangler	858-270-6165	coffeorganic@hotmail.com
	Glen Weischedel	619-588-5477	redsunsetonly4you@yahoo.com
	Harry Feucht	619-232-4626	
	Ron Rossi	619-582-9883	ronrossi@cox.net
Resources/Raffle:	Jim Strawn	619-887-8090	jlstrawn@cox.net
	Jim Bradbury	858-586-1220	bradburyjp@sbcglobal.net
Scholarships:	Russ Filbeck	858-566-9699	rcfilbeck@aol.com
Shop Tours:	Dale Stauffer	619-561-2202	ddstauffer@cox.net
Shows/Exhibits:	Bob Stevenson	619-422-7338	bobscww@cox.net
Sound Technician:	Thomas Johnson	619-281-7170	tejohnson22058@aol.com
Special Events:	Ed Gladney	858-484-4366	Gladney@san.rr.com
	Linda Sanders	760-804-1918	lindabsanders@roadrunner.com
Swap Meet:	Al De Vries	619-440-6598	alfreddev@hotmail.com
Toy Program:	Roger Solheid	858-279-1140	rsolheid@sbcglobal.net
	Terry Stolzoff	619-869-1224	woodycut@gmail.com
	Charlie Bierman	619-276-0048	
Video Library:	Bob Reese	858-695-2460	rtreese@gmail.com
Video Technician:	Michael Fairbanks	619-465-4972	mkfairdpmm@netscape.net
Wants and Disposals:	Bob Coates	619-258-8674	coatesrm@att.net
Web Site:	Doug Murphy	619-441-9665	dw-murphy@cox.net

Meeting Dates for 2011

General Membership Meetings

Al Bahr Temple, 5440 Kearney Mesa Road, SD
Behind the Hampton Inn. 7:00 PM

May 25
July 27
September 27 (Tuesday)
November 30

SDFWA Mailing Address

P.O. Box 82323 San Diego, CA 92138-2323

Board Meetings

Hardwood & Hardware Co., 8849 Complex Drive
7:00 PM

May 4
July 7 (Thursday)
September 7
November 2

SDFWA Web Page Address

<http://www.sdfwa.org>

RESOURCES

To receive your discounts, please show your membership card before you make a purchase.

American Furniture Design Co

www.americanfurnituresdgn.com

Phone: (760) 743-6923 (Orders)
Hours: 8:30-4:30 M-F
E-mail americanfurniture@cox.net
Brian Murphy, Proprietor

125 of the Finest Woodworking Plans, The only supplier of Daly's Finishing Supplies in San Diego, Hardware, Hand Tools and Books. SDFW member Benefits, Call for a Free Catalog!

Bayside Paint, Inc. www.baysidepaint.com

1228 Knoxville St., San Diego, CA 92120
Phone (619) 275-7800
Hours: 6:30 – 5:30 M-F, 8 -5 Saturdays
Robert Lewis, Manager

Mohawk Finishing Products and many other stains, sealers, fillers and tools. Free delivery with minimum order and UPS shipping available.

Craftsman Studio Woodworking Tools Store

www.CraftsmanStudio.com

2737 Via Orange Way - Suite 110, Spring Valley, CA 91978
Phone: (888) 500-9093
Hours: 10:00-4:00 T-F. Closed Sat, Sun & Mon
Bill Kohr - Proprietor

Fine American, European and Japanese Hand Tools and books for woodworkers. Selection of over 500 Two Cherries German Carving Tools. Stocking distributor for Lie-Nielsen, HNT Gordon, and Auriou tools. In stock and ready to ship with 1-2 day delivery in Southern California. Web and store prices may vary.

Note web orders ship Mon-Fri

DeWalt, Porter Cable, Delta Factory Service Center

7290 Clairemont Mesa Blvd. San Diego, CA 92111
Phone: (858) 279-2011
Hours: 7:30-4:30 M-F
Dave Stelmachowski, manager

Porter Cable, Delta, DeWalt, Devilbiss, FLEX, Biesemeyer and Oldham Parts, Accessories, Repairs and Reconditioned Tools.

Dunn-Edwards Paints

5250 Jackson Dr. #100 La Mesa, CA 91941
Phone: (619) 668-5091
Hours: 6:30-5:00 Mon-Sat.
Sam Arther, manager

The industry's finest source for lacquer, varnish, stains, water-based paint, oil-based paint, primers, urethanes, brushes, rollers and sundries. We also feature computerized color matching, color consultant, spray equipment, repair, rentals, specifications and free delivery. Call for more information.

Environmental Spray Systems

7114 Convoy Ct. San Diego, CA 92111
Phone: (858) 279-7114
Hours: 8:00-5:30 M-F
Sam Rinaker, owner

Specializing in spray finishing equipment. Local distributor for Devilbiss, Graco, Paasche, Accuspray, Ransberg and Gema.

Fas-N-Go

2260 Main St. Suite 15, Chula Vista CA
Phone: (619) 424-4774
Hours: 7:30-5:00 M-F

Nail guns, brads, staples, nails, plus accessories for nail guns and repair service. Distributor for 3M, Senco, Haubold, Josef Kihlberg, Spotnail, Hitachi, Bostich and Paslode.

FixMyBatteries.com

www.fixmybatteries.com

Phone: (760)747-8762
Hours: 9:00 – 5:00 M-F; 9:00 – 1:00 Sat
Email: service@fixmybatteries.com
Josh Zeller, Proprietor
Disabled Veteran Owned and Operated
1291 Simpson Way Suite F
Escondido CA 92029

We rebuild ANY BRAND power tool battery pack. Ours are longer lasting batteries with more power than retail batteries. Higher quality batteries at a fraction of the cost! ** The only rechargeable batteries we do not rebuild are Lithium Ion.**

Frost Hardwood Lumber www.frosthardwood.com

6565 Miramar Rd. San Diego, CA 92112
Phone: (858) 455-9060 (800) 258-3534
Hours: 7:00-4:30 M-F, 8:00-12:30 Sat.
Jim Frost, proprietor

Frost Hardwood Lumber Company has been a mainstay of the San Diego woodworking scene since 1911. They stock a wide variety of domestic and imported hardwoods as well as veneers, laminates and many other supplies for the commercial and hobbyist woodworker. The Frosts (Mr. G. T., Bruce and Jim) along with their staff stand ready to serve your woodworking needs.

TH&H The Hardwood and Hardware Company

The Woodworkers one Stop for Material and Supplies

8849 Complex Dr. San Diego, CA 92123
Phone: (858) 536-1800 Fax: (858) 614-1811
Hours: M-F 7:00-5:00, Sat. 9:00-4:00
Tom Drinnon, manager

Hardwood lumber, Mouldings, Veneers, Cabinet Hardware, Finishes, Hand Tools and Supplies.

Lane Stanton Vance Lumber (El Cajon)

El Cajon

360 Vernon Way, El Cajon, CA 92020
Phone: (619) 442-0821
Hours: 7:00-3:30 M-F, 8:00-12:00 Sat.

San Marcos

1305 Armolite Drive, San Marcos, CA 92069
Phone: (760) 471-4971
Hours: 7:00-4:30 M-F, 8:00-11:30 Sat.

The company carries domestic and imported hardwoods, molding and panel products for cabinet makers, furniture makers and contractors.

Mission Molding & Wood Specialties

9510 Chesapeake Dr. # 401. San Diego, CA 92123
Phone: (858) 569-8591
Hours: 7:30-5:00 M-F, 8:00-1:00 Sat.
Bob Hawk, manager

The sign inside Mission Moulding's door says "We have one of the largest selections of architectural and decorative moldings in Southern California." Select from more than 300 patterns in a variety of woods as well as polystyrene, fiberglass and primed plastic. The staff of Mission Moulding can also supply you with mantels, handrails, balusters, columns and more.

Packaging Store

7848 Silverton, Suite A, San Diego, CA 92128
Phone: (858) 549-7225, Fax (858) 549-7274
Hours: 9:00-5:00 M-F
Peter Wharf

Custom boxes, crating, packing supplies, and shipping. Phone estimates and pick up service available.

R. S. Hughes CO. Inc.

www.rshuges.com

1281-B Liberty Way, Vista, CA 92081-8309
Phone: (760) 579-0222
Hours: 7:45-5:00 M-F
Chuck Schweikart, Manager

San Diego's largest inventory of 3m abrasives, adhesives, safety equipment and more. Phone orders/estimates. UPS shipping or walk in service available.

Rockler Woodworking and Hardware

www.rockler.com

8199 Clairemont Mesa Blvd. San Diego, CA 92111
Phone: (858) 268-1005
Hours: 9:00-6:00 M-F, 9:00-5:00 Sat., 11:00-4:00 Sun.
Mike Durlak, manager

Rockler is an excellent source for hard to find hardware and accessories. Manager Mike Durlak and his staff can help you with good selection of hardware, exotic hardwoods, veneers, inlays, specialty moldings, fine woodworking hand tools, select power tools, an impressive array of finishing materials, a great selection of books and plans, and weekly workshops in many disciplines. Visit this great woodworking source next time you need that special item that no one else seems to have. Catalogues are available.

Shellac Finishes

www.shellacfinishes.biz

Vijay Velji, Proprietor
Internet only. Shipped USPS

De-Waxed Shellac Flakes for classical woodworkers at very competitive prices.

Tropical Exotic Hardwoods of Latin America, LLC

www.anexotichardwood.com

2270 Camino Vida Roble, Suite "B", Carlsbad, Ca. 92011

Hours: Mon. -Fri. 8:30 to 4:30, Sat. 9:30 - 1:00
Phone: (760) 434-3030, Fax: (760) 434-5423
Mitch Talcove, Owner manager

Specializing in a wide selection, varieties, sizes, and shapes of Exotic Hardwoods from Latin America.

Tool Depot

3799 Gaines St, San Diego, CA 92110
Phone: (619) 220-7111
Hours: 7:00-6:00 M-F, 9:00-5:00 Sat.
Bob Welte

Tool Depot offers fine high quality woodworking tools from around the world and a knowledgeable service orientated staff. New and used tools and equipment sold and traded. Tool repair and sharpening services are also available.

Toolmart, Inc www.toolmarts.com

2750 Auto Park Way
Escondido, CA 92029-1030
Phone: (760) 480-1444, Fax (760) 747-2626
Hours: 7:00-5:30 M-F, 7:00-4:00 Sat.
Jeff McCreary, manager

Discount tool store and authorized repair center.

Woodworker West www.woodwest.com

P.O. Box 452058, Los Angeles, CA 90045
Phone: (310) 216-9265 Fax: (310) 216-9274
E-mail: editor@woodwest.com
Ron Goldman, publisher

Published bi monthly to promote craftsmanship in woodworking throughout the western U.S.

Russ Filbeck, Master Chair Maker

www.russfilbeck.com
rcfilbeck@aol.com
(858) 566-9699

Make your own heirloom quality chair.
Chair styles include Appalachian Ladder Back and Windsor chairs. All materials, tools and instruction provided. Class size is limited to two students

Use the web site, e-mail or call Russ to schedule your class.

Do you own a RBI scroll saw and are having trouble getting parts for your saw? You can contact,

Hawk Woodworking Tools
P.O. Box 127
319 South Main Street
Bushton, Kansas 67427

620-562-3557 (Do not use 816-884-3534) or

Customer service at service@hawkwoodworkingtools.com

They carry a full line of parts for RBI saws.

Thanks to Doug Parker for this information.

VIDEO LOAN REQUEST

I wish to borrow one of the following videotapes and agree to return it within seven (7) days of my receipt of it. A postpaid return label and an order form are enclosed. I understand that a late return charge of \$1 per day may be assessed and that I am responsible for replacement of the tape if it is damaged or lost while in my custody. If your first choice is not available, you will receive your second choice.

Enclosed is \$3.50 to cover postage and handling. My choices are:

(1) _____ (2) _____

NAME: _____ PHONE: _____ E-Mail _____

ADDRESS: _____ CITY _____ STATE _____ ZIPCODE _____

SIGNATURE: _____

Make checks payable to SDFWA. Mail to SDFWA LIBRARY, c/o R.T.Reese 10886 Aviary Court, San Diego, CA 92131 858-695-2460 rtreese@jjuno.co

San Diego Fine Woodworkers Association Membership Application

Print Clearly

Date: ____/____/____

- ☐ **NEW** Where did you hear about us? _____
- ☐ **RENEWAL**

Name: _____
First Middle Last

I would like a membership card for my spouse: _____
Name

Mailing Address: _____

City: _____ State _____ Zip Code (9 digits) _____ - _____

Telephone: (____) _____ - _____

E-Mail Address: _____

Your information will only be shared within this Association and on a need-to-know basis.

You will receive your newsletter via the SDFWA website unless you indicate otherwise.

You will be notified when the newsletter is available on the website at SDFWA.org.

I would like to receive my newsletter By U.S. mail _____

- ☐ **\$30 dues for 2011 membership** (expires Dec 31, 2011)
- ☐ **\$40 dues for last quarter of 2010 and 2011 membership** (offered Oct -Dec)

Mail form and payment to: SDFWA P.O. Box 82323 San Diego, CA 92138-2323



RETURN SERVICE REQUESTED

Non-Profit Org.
U.S. Postage Paid
Permit 697
San Diego, CA

Next meeting: 7 pm, Wednesday, May 25th, 2011 at the Al Bahr Temple

